

ROOFING TIMES

ISSUE

31



TACKLING SKILLS SHORTAGE: BMI ACADEMY LAUNCHES FLAT ROOF MATERIALS ESTIMATING COURSE

UK ROOFING
AWARDS
2026

NFRC

UK ROOFING AWARDS TAKES PLACE NEXT MONTH

GET YOUR TICKETS BEFORE THEY SELL OUT! (See page 3 for details).

IN THIS
ISSUE

PRACTICAL
ROOF
SOLUTIONS

EVOLUTION
OF LEAD
ROOFING

ROOFER'S
NO.1: TRUSTED
SYSTEMS

BREAKING
THE PITCH
RULES

UK ROOFING AWARDS 2026—FINALISTS

UK ROOFING
AWARDS
2026

NFRC

Following a record number of entries into the **2026 UK Roofing Awards**, the judges have completed the mighty task of reviewing each submission and the 2026 shortlist has been finalised. A total of 16 categories have finalists announced across a broad range of roofing and cladding disciplines.

The Roofing Awards will be taking place on **Friday 8 May 2026** at the Intercontinental London—The O2. Tables for the event are available to book now.

The Industry Choice Award, sponsored by Radmat Building Products, will allow the industry to have its say on their favourite project. **Voting is open until 19 April.**

BITUMINOUS HOT APPLIED LIQUID WATERPROOFING

Sponsored by VELUX



One Leadenhall—
Lindner Prater Ltd



1 Southwark Bridge—
Hambro Roofing Ltd



19-35 Baker Street—
Lindner Prater Ltd



Olympia Central—
Noble House
Services (UK)
Ltd, working with
Radmat Building
Products Ltd

HERITAGE ROOFING

Sponsored by Glidevale Protect



Auchendennan
House—
DM Roofing &
Roughcasting Ltd



All Saints
C of E Church—
Richard Soan
Roofing Services



Hoole Community
Centre—
Emerton Roofing
(Western) Ltd



Staick House—
Rowlands Roofing

COLD APPLIED LIQUID WATERPROOFING

sponsored by Unilin Insulation UK Ltd



The Library,
Murray Edwards
College—Millane
Contract Services
Ltd, working with
WestWood Liquid
Technologies Ltd



Jersey Opera
House—Rateavon
(Jersey) Ltd, working
with Triflex (UK) Ltd



Christ's College,
Cambridge—
Emperor Roofing
Ltd, working with
Sika Ltd



25 Moorgate—
Essential
Building Services
Ltd, working with
Proteus
Waterproofing Ltd

LEADWORK

sponsored by Calder Industrial Materials Ltd



Kings Theatre—
Premier Specialist
Roofing
Contractors Ltd



Warwick House—
EWN Leadwork
Specialists Ltd



Woronzow Road—
Fraden Contracts Ltd



Country Manor—
Emerton Roofing
(Western) Ltd

FULLY-SUPPORTED METAL



Oxford Brookes
University—
Roles Broderick
Roofing Ltd



Rockmount—
Install Zinc Ltd



65 Davies Street—
Richardson Projects



Lollipoppet Castle—
Matt Timby Ltd

MASTIC ASPHALT

Sponsored by Mastic Asphalt Council (MAC)



Herstmonceux
Castle—Sussex
Asphalte Ltd



2 Willow Road—
Bespoke Asphalt Ltd



Southampton
Art Gallery—
Abbey Asphalt
Roofing Ltd



Carrickfergus Castle—
John Fetherston
Asphalt Roofing Ltd,
working with IKO PLC

GREEN ROOFING

Sponsored by Bauder Ltd



Chester Zoo—
Safeseal Roofing Ltd



Kay Premium
Marking Films
(KPMF)—
Haran Roofing Ltd



Kellstone—
JPT Roofing Ltd,
working with
Soprema UK



Rushers Ghyll—
Clarke Roofing
Southern Ltd

MULTI-DISCIPLINE PROJECT OVER £500K

Sponsored by ICB Group



Spindles Shopping
Centre—Longworth
Facades



Chesterfield & Derby
Hospitals—
MAC Roofing &
Contracting Ltd



University of Derby
Business School—
Advanced
Roofing Ltd



Rivenhall IWMF—
MAC Roofing &
Contracting Ltd

PROJECT UNDER £25K



The Highcross Bell Tower-**Prestige Metal Roofing Ltd**



Ferry Footbridge Control Tower-**Richard Soan Roofing Services**



Wickham Manor outhouse-**Karl Terry Roofing Contractors Ltd**



Ellesmere College Turret-**Emerton Roofing (Western) Ltd**

ROOF TILING

Sponsored by **Marley Ltd**



Tamella-**SDS Roofing Services Ltd**



Baslow Road-**Clarke Roofing Southern Ltd, working with Keymer Tiles Ltd**



1-3 Orme Court-**Richardson Projects**



New Road Court Apartments-**M. Camilleri & Sons Roofing Ltd**

RAINSCREEN FAÇADES

Sponsored by **Kingspan Ltd**



LHR21-**Kovara Projects Ltd**



Countess of Chester Hospital-**Longworth Facades**



The Marcus Hotel-**Thornton Roofing (Ireland) Ltd**



Warwick Hospital-**Marksman Roofing & Cladding Ltd**

SHEETING AND CLADDING



Belfast Harbour Film Studios-**Thornton Roofing (Ireland) Ltd**



Etex-**Massey Cladding Solutions Ltd**



Booker Barnsley-**Blade Roofing Ltd**



Belfast Grand Central Station-**Thornton Roofing (Ireland) Ltd**

REINFORCED BITUMEN MEMBRANES



Cambridge South Station-**Hambro Roofing Ltd**



Milton Keynes Library-**Ashe Roofing Ltd**



Carlsberg Britvic Brewery-**Cambridge Flat Roofing Company Ltd, working with Garland UK**



Smurfit Westrock-**LRL Roofing Solutions**

SINGLE PLY ROOFING

Sponsored by **Recticel Insulation UK Ltd**



Nant Caerau Primary School-**J Randall Roofing Contractors Ltd**



Robin House-**Aim Developments Ltd, working Sika Ltd**



Seabrook Orchards-**NRA Roofing & Flooring Services Ltd, working with ICB (Waterproofing) Ltd**



Premier Inn, Margate-**Invictus Roofing Ltd**

ROOF SLATING

Sponsored by **CUPA PIZARRAS S.A.**



King George V Pavilion-**The Evana Group Ltd**



Walworth Town Hall-**Richardson Projects**



Bristol Central Library-**Ashcroft Services Ltd**



Little Eversden, Cambridgeshire-**Roof Brothers Ltd, working with CUPA PIZARRAS S.A.**

SOLAR ROOFING

Sponsored by **SIG Roofing**



Jigsaw Homes, Chorley-**DLP Services (Northern) Ltd, working with wienerberger UK**



St Nicholas Leisure Centre-**Stage Roofing Ltd**



Twigs-**Roofing Matters Group Ltd**



Yeoman Park School-**Advanced Roofing Ltd**

Join us on 8 May 2026 to find out who wins!

UK ROOFING AWARDS 2026

NFRFC

2026 UK ROOFING AWARDS

Come along to this premier event celebrating the highest standards of safety, complexity, and craftsmanship in roofing, whilst enjoying the opportunity to connect with people across the roofing supply chain.

Tickets for the awards ceremony on 8 May 2026 can be purchased at <https://bit.ly/Attend2026> or by scanning the QR code. Ticket sales close 17 April so be quick!



WITH THANKS TO OUR SPONSORS



Headline sponsor



Drinks reception and after party sponsor





PROTEUS DELIVERS SUSTAINABLE ROOFING SYSTEMS FOR ICONIC THEATR CLWYD IN WALES

Theatr Clwyd, a flagship arts centre overlooking Mold, Flintshire, has been a cultural landmark since 1976. By 2025, the venue required a major redevelopment to modernise facilities, enhance energy efficiency and meet ambitious sustainability targets.

The £50 million project, led by Haworth Tompkins in partnership with Flintshire County Council, combined selective demolition, refurbishment and new-build elements, including an 800 m² foyer and workshop space.

PROTEUS WATERPROOFING, alongside approved contractor DH Roofing Ltd, delivered a £1.1 million waterproofing and green roof system, a cornerstone of the theatre's eco-conscious redevelopment.

The works involved stripping and replacing all existing roofs, installing tapered PIR insulation to achieve a U-value of 0.13 W/m²K, and integrating the 85 m² Pro-Living® green roof system.

Complex detailing included rooflights, box gutters and seamless interfaces between refurbished and new-build areas, ensuring watertightness, durability and aesthetic cohesion.

The project faced multiple challenges, particularly over heritage-sensitive areas like the Anthony Hopkins Theatre, which required extreme care to repair, strengthen and replace damaged decking and timber joists. Limited access also demanded precise logistical planning.

LAMILUX continues to support roofing contractors with a comprehensive range of rooflights, smoke vent (AOV) systems, and roof access hatches designed to simplify installation, while meeting the latest performance and compliance demands.

PRACTICAL ROOF SOLUTIONS BUILT FOR TODAY'S CONTRACTORS

As building regulations place increasing emphasis on smoke ventilation, daylight performance and safe roof access, LAMILUX products are engineered to help contractors deliver compliant solutions without unnecessary complexity on site.

The company's AOV systems are fully tested to EN 12101-2 and can be supplied as complete, pre-configured units, reducing interface risk and speeding up installation. Integrated control options also allow contractors to co-ordinate smoke ventilation, natural ventilation and comfort control from a single system.



For more information on products available from LAMILUX please visit www.lamiluxskylights.co.uk.

LAMILUX rooflights are available in a wide range of configurations, including glass and GRP options, with high thermal performance to support Part L requirements. Prefabricated kerbs and factory-assembled units minimise on-site labour, helping roofing teams maintain programme certainty on both refurbishment and new-build projects.

Roof access hatches are increasingly specified on commercial and industrial buildings, and LAMILUX offers insulated, secure solutions suitable for maintenance access while maintaining weather tightness and energy performance. Electric opening options are available to suit a wide range of access and operational needs.

The Proteus Technical Teams provided regular site inspections, detailed cut-to-fall drawings and product application guidance, ensuring compliance and quality across all phases.

In addition, drone technology monitored progress of the roof waterproofing, and all works followed stringent health, safety and environmental protocols. The theatre's photovoltaics, LED lighting, rainwater harvesting and a fossil fuel-free design further supported the project's zero-carbon ambition.

Completed in July 2025, the Proteus roof waterproofing systems ensure Theatr Clwyd is a high-performance, sustainable arts venue, demonstrating technical excellence, collaborative problem-solving and environmentally-responsible construction.

For more information on Proteus Waterproofing's products please visit proteuswaterproofing.co.uk.

ANOTHER REASON TO ATTEND THE UK ROOFING AWARDS

BENCHMARKING
Help raise your company profile, gaining a competitive edge.



BREAKING THE PITCH RULES—PLAIN EASY TURNS A 28° CLAY ROOF INTO A COMPLIANT MASTERPIECE

Low-pitch clay roofs remain one of the most persistent challenges for contractors and specifiers. When handmade plain tiles are required, options narrow quickly.

Traditional guidance demands a minimum 35 – 40° pitch, making many planning restricted designs impossible without compromising aesthetics or increasing risk.

Blackberry Kilns, a bespoke build within the Kent Downs Area of Outstanding Natural Beauty (AONB), faced exactly this issue. Several elevations dropped to 28°, with complex junctions and long raking cuts beneath zinc sections adding further difficulty. Under conventional methods, a clay tiled roof would not have been viable.

The solution came through **PERMAVENT** Plain Easy, the patented low-pitch roofing system engineered to break the historic pitch barrier. Allowing plain tiles to be installed at 17.5° while remaining fully compliant with BS 5534, Plain Easy provides a defined, tested and repeatable method.

For contractors and architects, the advantages are clear. Plain Easy offers far greater freedom where planning height limits restrict pitch, while still delivering the clay aesthetic without compromising performance.

The system reduces installation and weathering risk at low angles, giving teams clarity and confidence from specification to completion. Backed by a 40-year guarantee, it offers long-term assurance that the roof will perform as required.

Permavent's technical team delivered a project-specific specification to manage the complex geometry, ensuring controlled drainage, dry battens, improved breathability and long-term watertightness.

Blackberry Kilns proves that Plain Easy doesn't just support low-pitch roofing, it makes it achievable.

To find out more please visit permavent.co.uk.



With technical support available from design stage through to installation, LAMILUX works closely with roofing contractors to reduce risk, improve buildability, and deliver compliant roof solutions. By combining tested performance with practical installation benefits, LAMILUX continues to be a reliable partner for roofing professionals across the UK.

**ANOTHER REASON
TO ATTEND THE
UK ROOFING
AWARDS**

FREE MARKETING

Shortlists and winners are showcased online and across industry newsletters and publications.



FP MCCANN STRENGTHENS ITS ROOFING DIVISION WITH NEW ACQUISITION



FP MCCANN, a trusted name in quality construction materials, is pleased to announce its acquisition of Easy-Trim Roofing and Construction Products Ltd.

This strategic partnership with a leading UK manufacturer of roofing products marks a significant step in FP McCann's mission to provide a comprehensive, convenient service to customers of roofing and building products.

By welcoming Easy-Trim into the family, FP McCann is making it easier than ever for customers to source everything they need for their roofing projects from a single, trusted source.

This streamlined procurement process saves both time and administrative effort. Furthermore, offering a complete roofing package ensures seamless compatibility among all components, resulting in a quality finish and long-term performance.

The acquisition also provides customers with direct access to Easy-Trim's celebrated range of innovative and reliable products, such as high-performance, lead-free flashing and user-friendly dry-fix roofing systems.

Based in Altham, Lancashire, Easy-Trim has built a stellar reputation for quality, innovation, and customer service, values that align perfectly with FP McCann's own. This acquisition is a key part of FP McCann's long-term vision to invest in the roofing sector and continuously enhance the value provided to its customers.

FP McCann is confident that this new chapter will bring significant benefits to its customers' businesses and looks forward to serving their roofing needs even more effectively.

To learn more about the expanded range of roofing solutions please contact your FP McCann representative or visit www.fpmccann.co.uk.



USING AIR PERMEABLE UNDERLAYS WITH IN-LINE SOLAR PV

LANGLEY ENTERS A NEW CHAPTER AS FOUNDER RETURNS

Tony Silvestri returns to LANGLEY to lead the business and drive the For Better Living vision.

Langley has announced that its founder, Tony Silvestri, has returned to a senior leadership role, strengthening the momentum behind the company's For Better Living vision and the progress already underway across the organisation.

After stepping back from daily leadership four years ago, Tony returns at a time when Langley is already pushing forward with significant improvements across operations, training and technical delivery.

Tony said: *"We have exceptional people across Langley. The opportunity now is to continue building on the pace and progress already achieved, and bring even greater clarity and consistency to every part of the business. Langley has built a strong reputation over many years."*

"My focus is on sharpening our direction, reinforcing our strengths and ensuring our teams feel confident as we deliver the quality and integrity our customers and partners expect."

"Langley has achieved a great deal this year. We now need stronger alignment, clearer communication and continued momentum. Every decision we make should help us deliver on our For Better Living vision and build confidence for customers, contractors and learners."

Tony's return comes as Langley pushes forward with programmes designed to sharpen efficiency and strengthen the experience for everyone who works with the business.

Further updates will follow in the coming months.

For information on Langley's products and training please visit www.langley.co.uk.



However, updated NHBC Technical Standards state that roofs incorporating integrated solar panels should be treated as air-impermeable outer coverings unless permeability can be demonstrated, creating uncertainty.

To investigate this issue, Proctor Group commissioned independent modelling using RoofCond software. The model assessed a high-risk scenario, including high moisture loads, unsealed ceiling, unventilated roof space, APLR underlay and up to 80 per cent of the roof covering sealed to represent integrated PV panels.

The results showed a short-term winter peak condensate level of 60 g/m², with significantly lower levels for the remainder of the year. This level of condensation is insufficient to cause problems within the batten space.

The research concluded that, in most instances, use of in-line PV panels does not create an unacceptable condensation risk when using Proctor Air® and no additional batten cavity ventilation. Where large coverage PV panels are required, there is recommended guidance regarding placement and surrounding tile courses.

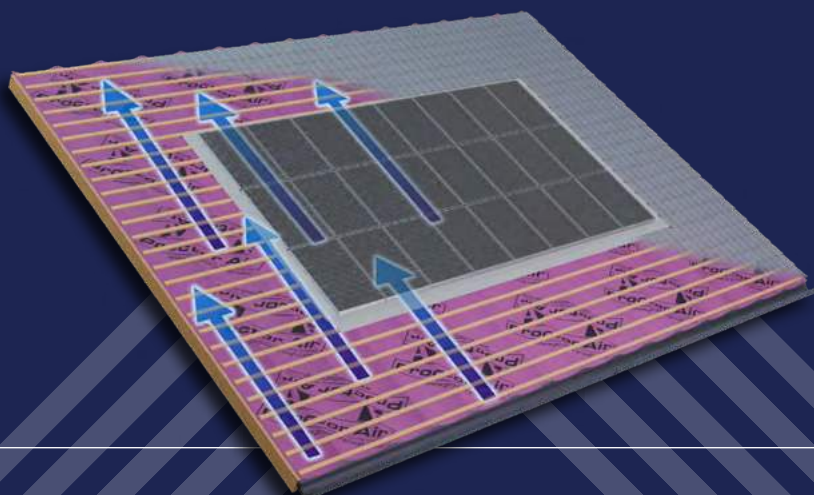
These findings were independently validated by the Fraunhofer Institute and are now reflected in an updated BBA certificate for Proctor Air®, confirming its suitability for use with in-line solar PV without additional ventilation.

For more information on Proctor Air® please visit www.proctorgroup.com/products/proctor-air.

The increasing use of in-line (integrated) solar PV panels on new-build housing has raised questions about their compatibility with permeable roof underlays.

Concerns have been expressed over whether integrated PV panels create an air-impermeable roof covering and therefore could increase the condensation risk.

APLR underlays, such as **PROCTOR AIR®**, allow both air and vapour to pass through and disperse externally through the external roof covering. This reduces reliance on traditional roof ventilation.



WHY CERTIFICATION STILL MATTERS IN ROOFING MEMBRANES

In a market crowded with roofing membranes that often appear similar on paper, certification remains one of the clearest indicators of real-world performance. Independent accreditation is not about marketing claims; it is about verified data, consistency and accountability.

For installers, certified membranes reduce risk. They provide reassurance that declared performance has been independently tested against recognised standards, not simply assessed internally. This reassurance matters more than ever as scrutiny from building control, warranty providers, and insurers increases.

Weight, durability, and long-term behaviour under site conditions are areas where certification becomes particularly relevant. Heavier membranes, for example, can offer improved resistance to damage during installation and greater robustness once in service. However, weight alone means little without independently-verified performance to back it up.

Certification also brings clarity when specifications are questioned or substitutions proposed. In an environment where cost

pressures can encourage shortcuts, third-party certification provides a reliable benchmark that installers and specifiers can reference with confidence.

Vertically-integrated UK manufacturer, **DON & LOW**, continues to invest in independently-certified roofing membranes, including heavyweight vapour permeable options such as RoofTX® Extra at 230 gsm.

In-house manufacturing and quality control help ensure consistency between certified performance and products supplied to site, supporting long-term reliability.

This approach reflects commitment to transparency, durability, and installer confidence, reinforced by access to technical guidance that helps contractors make informed membrane choices and support compliant roof performance.



SIG ROOFING'S CANCER CAMPAIGN WINS HEALTH AND SAFETY INITIATIVE OF 2025

SIG Roofing's two-year partnership with national skin cancer prevention charity SKCIN has been recognised at the Builders Merchants News Awards, where it won the Health and Safety Initiative of 2025 category.

The award recognised the company's commitment to raising awareness of skin cancer, in particular to male outdoor workers, who make up a significant portion of the SIG Roofing customer base.

During the partnership, they have provided free training to help both staff and customers learn how to implement key skin cancer prevention measures and educate them on how to spot the vital early signs of the disease.

SIG Roofing began working with the SKCIN charity in 2024, having learned about its national Sun Safe Workplaces accreditation programme for employers of outdoor workers.

As a result of their efforts, the business was awarded a certificate for completing the programme, having conducted training courses for its employees across its national network of SIG Roofing branches.

To promote sun-safe practices to its customers, SIG Roofing took on a multi-channel approach. News releases reached an audience of over 120,000 through trade publications, while social media activity generated over 17,000 impressions.

The 'Take a Squirt' initiative also saw free SPF50 sun cream stations installed in all branches, with education materials, merchandise and in-store digital advertising.

To find your nearest branch of SIG Roofing please go to www.sigroofing.co.uk/find-a-branch.

And for more information on skin cancer and melanoma please visit www.skcin.org.





ROOFER'S NO.1: TRUSTED SYSTEMS, PROVEN ON THE ROOF



In roofing, where defects often appear years after completion, certification remains one of the most practical tools for managing risk—for manufacturers, and for everyone responsible for the finished roof.

For more information please visit www.donlow.co.uk.

In a market crowded with bold claims, professional roofers know that quality only reveals itself on site. Roofer's No.1 has earned its reputation by focusing on what really matters: dependable performance, installer-friendly design, and products that work in real-world conditions, day after day.

Developed by industry experts for roofing contractors and builders, the Roofer's No.1 range from RUBBERSEAL is built around practicality rather than gimmicks. At the centre of the offering is the Polyflex MS Roof and Detail Membrane, a next-generation liquid waterproofing system using advanced MS polymer technology.

Designed for both large roof areas and intricate detailing, it creates a seamless, joint-free waterproof layer that remains flexible in extreme temperatures. Its ability to bond to most substrates—including damp surfaces—combined with excellent UV resistance makes it a reliable solution for flat roofs, penetrations, upstands, and transitions where failure is not an option.

Complementing the membrane systems is the Roofer's No.1 sealant range, including high-performance polymer sealants developed specifically for exposed roofing environments. With fast curing times, strong adhesion even under water, and permanent flexibility, these sealants are designed to accommodate structural movement while maintaining a watertight seal.

Low-VOC, odourless formulations improve on-site comfort without compromising durability or long-term weather resistance.

What ties the entire range together is consistency. Roofer's No.1 products are 100 per cent waterproof, all-weather capable, and designed to make everyday roofing tasks simpler and more efficient.

For professionals who value reliability, reduced call-backs, and confidence in the finished roof, Roofer's No.1 delivers exactly what its name promises—trusted performance, first time.

For more information please call **01290 559333**, email info@rubberseal.com or visit rubberseal.com.





Roofing Division

Rafter Ventilators

1

Continuous Roll Ventilator
RV300
RV450
RV600
RV900

Cross Flow Eaves Ventilators
EV400
EV600

Cross Flow Eaves Ventilators with strengthening ribs
RV401
RV451
RV601

Cross Flow Eaves Ventilators with strengthening ribs and insect screen (for open soffit)
RV401F
RV451F
RV601F

Cross Flow Eaves Ventilator with strengthening ribs (higher airflow)
RV625

RV625F with insect screen

Refurbishment Rafter Ventilator
RV635
RV655

2

Fascia Ventilators

3

FV100
10mm airflow

FV250
25mm airflow

Soffit Ventilators

4

SV604
10mm airflow

SV604E
with expansion joint

SV606 10mm airflow,
for sloping soffits

SV609
25mm airflow

Single soffit vents
Suitable for refurbishment

Spring Wing SV120

Twist and Lock
SV200

Pipe Adaptors, for use with **5 & 6**

Connect to Flexi Pipe ducting to convert a ventilator into a soil vent pipe or mechanical extract terminal.

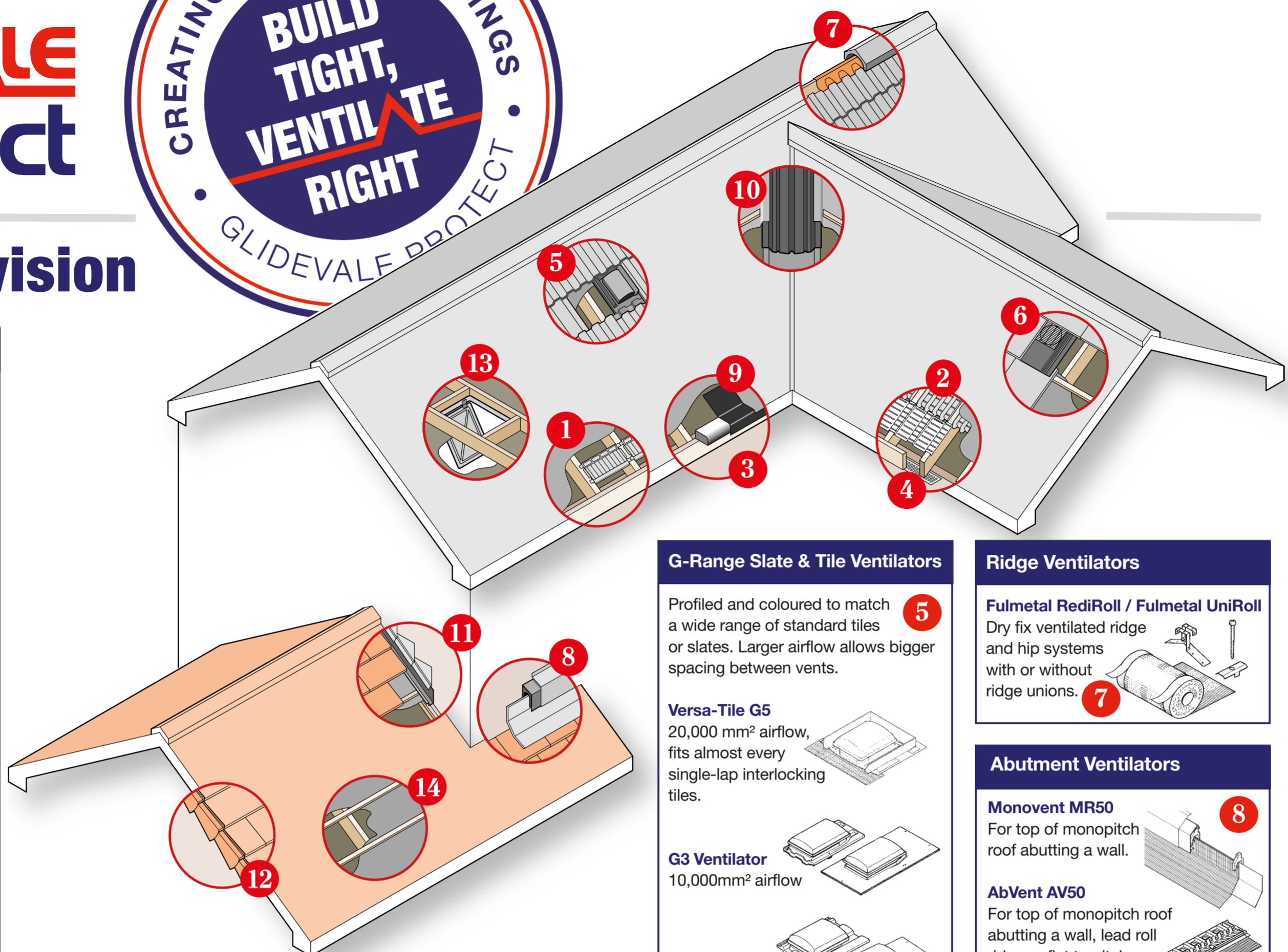
GPA Universal Pipe Adaptor

GV110 Pipe Adaptor

SUA Universal Pipe Adaptor

Flexi Pipe

Universal Extension Sleeve
Always use with G range tile and slate ventilators to ensure a clear air path.



G-Range Slate & Tile Ventilators

5

Profiled and coloured to match a wide range of standard tiles or slates. Larger airflow allows bigger spacing between vents.

Versa-Tile G5
20,000 mm² airflow, fits almost every single-lap interlocking tiles.

G3 Ventilator
10,000mm² airflow

G5 Ventilator
20,000mm² airflow

Ridge Ventilators

7

Fulmetal RediRoll / Fulmetal UniRoll
Dry fix ventilated ridge and hip systems with or without ridge unions.

Abutment Ventilators

8

Monovent MR50
For top of monopitch roof abutting a wall.

AbVent AV50
For top of monopitch roof abutting a wall, lead roll ridge or flat to pitch roof junction.

In-Line Slate & Tile Ventilators

6

Venta-Line TLE Universal Flat Interlocking Tile Vent
10,000mm² airflow, for thin leading edge roof tiles

Universal Flat In-Line Interlocking Tile Ventilator
10,000mm² airflow

GV11 Compact Universal In-Line Slate Ventilator
10,000mm² airflow

Universal Interlocking Plain Tile Ventilator
10,000mm² airflow, for use with interlocking plain tiles

Loft Access Hatches*

13

Push-up hatches
AH4
AH4 Part L
680 x 520mm

AH7 Part L 1/2 hr Fire Rated
530 x 530mm

Hinge-down hatches
AH5
AH5 Part L
600 x 520mm

AH6 Part L
1hr Fire Rated
540 x 520mm

* Part of Glidevale Protect's Construction Range

Roofing Accessories

9

Eaves
OFV Eaves Skirt

Eaves Comb
Filler EC55

Bonding Strips
For junctions between roofs

Traditional Bonding Strip BS 2X

Universal Bonding Strip

10

Dry Valleys
Universal Dry Fix Valley Trough

Univalley 125 Valley Trough

Flashings
AluFlash, environmentally friendly, lead-free flashing (embossed and corrugated options)

Dry Verge Systems
Dry Verge DV200 for slate

Universal Dry Verge for tiles

11

12

Roofing Underlays

Glidevale Protect ventilation products may be required with these underlays in accordance with BS 5250

14

Vapour Permeable (Type LR) Underlays

For use in cold or warm pitched roofs, reducing the risk of condensation in accordance with BS 5250. Tested in accordance with BS 5534, wind zones applicable to use at 345mm batten gauge. The range is S.R. 82 compliant for Ireland with solutions for both moderate and severe exposure areas.

Protect VP200
For wind zones 1-2 (125gsm)

Protect VP300
For wind zones 1-3 (130gsm). S.R. 82 - Moderate

Protect Zytec
For wind zones 1-4 (158gsm). S.R. 82 - Moderate & Severe

Glidevale Protect Roofing Underlays

- Act as a secondary line of defence against driving rain.
- Offer the required wind uplift resistance without the need for sealing tapes.
- Act as a temporary roof covering during construction.
- Have a hydrostatic head of water resistance of 1-7 metres to ensure high watertightness properties.

Impermeable (Type HR) Underlays

Heavy duty underlays for use in cold or warm pitched roofs. Tested in accordance with BS 5534, wind zones applicable to use at 345mm batten gauge. Also S.R. 82 compliant for Ireland.

Protect Wunderlay

Protect A1
For wind zones 1-5 (145gsm). S.R. 82 - Moderate & Severe

Protect A1 T3 Plus
Heavier duty, for wind zones 1-5 (190gsm). S.R. 82 - Moderate & Severe

Air and Vapour Permeable (Type LR) Underlays

A type LR roof underlay with high air and vapour permeability, helping to avoid harmful condensation without the need for additional ventilation as permitted by the NHBC for a cold roof construction.

Protect A1 Solar
For wind zones 1-5 (145gsm). S.R. 82 - Moderate & Severe

Protect Viking Air
For wind zones 1-4 (159gsm). S.R. 82 - Moderate & Severe

ABOUT GLIDEVALE PROTECT

Specialists in ventilation solutions, condensation control and energy efficiency across the built environment.

A UK producer with over 40 years of experience and technical expertise, Glidevale Protect offers a comprehensive range of building products from its Roofing and Construction Divisions.

The Roofing Division can support pitched and flat roof applications for both new build and refurbishment schemes. This includes roofing underlays, roofing ventilation and accessories. The company also offers a full package of underlay and ventilation options suitable for use with solar PV panels, backed by technical support and a 15 year warranty.

The construction range features reflective and non-reflective breather and airtightness membranes including fire rated options, cavity trays, loft hatches and building ventilation products.

Glidevale Protect products are suitable for both traditional and offsite construction.

Our accreditations include the following international standards:

- ISO 9001 – quality
- ISO 45001 – health & safety
- ISO 14001 – environmental
- ISO 50001 – energy management systems

Stockist's stamp



Glidevale Protect, Studio 9, Jackson House, Sibson Road,
Sale, Greater Manchester, M33 7RR, UK
T: +44 (0)161 905 5700 | info@glidevaleprotect.com
Glidevale Protect | glidevaleprotect.com

Glidevale Protect maintains a policy of continuous development and reserves the right to amend product specifications without notice.
Glidevale Protect is a trading brand of Wienerberger Ltd. Registration No: 5299520.
Printed on sustainably sourced paper.

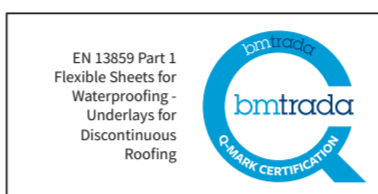


ROOFING UNDERLAYS

Glidevale Protect offers one of the broadest ranges of pitched roof underlays available from a single manufacturer.

The range includes the following types of underlay, with options in each range that can be used across the whole of the UK and Ireland, meeting wind uplift resistance zones 1-5 to BS 5534 and being S.R. 82 compliant for moderate and severe exposure areas.

- Vapour permeable
- Impermeable
- Air and vapour permeable



ROOFING VENTILATION

Glidevale Protect offers a wide selection of roofing ventilation products suitable for all tile and slate roofs.

As one of the market leaders in tile ventilator manufacture in the UK, Glidevale Protect's range has been collated for over 40 years and includes hundreds of universal and dedicated profile ventilators matching a wide range of tiles available on the market as well as tiles no longer in manufacture.

The range includes cowl slate and tile ventilators, in-line slate and tile ventilators, ventilator adaptors, rafter ventilators, fascia ventilators and soffit ventilators.



ROOFING ACCESSORIES

Glidevale Protect offers a range of roofing accessories for pitched tile and slate roofs which complement the roofing product portfolio and provide an alternative to traditional products.

The range includes dry fix hip and ventilated ridge systems, dry verge systems, valley troughs, bonding strips, eaves skirt and Protect AluFlash flashing, an aluminium based alternative to lead.



TECHNICAL SUPPORT

Get support from Glidevale Protect's Technical team on existing projects and new specifications, including:

- Design guidance
- Building regulations advice
- U-value calculations
- Condensation risk analysis, product specification details and clauses
- Estimates and structured quotes
- Site take-offs
- Plot by plot delivery
- Site visits
- Tool box talks



Contact our Technical team:
T: +44 (0)161 905 5700
E: technical@glidevaleprotect.com

CONSTRUCTION DIVISION

From ground to roof, Glidevale Protect's Construction Division has it covered, offering:

- Reflective and non-reflective external wall breather membranes.
- Internal airtightness products and vapour control layers. Reflective options available for both of the above helping to improve thermal performance.
- Fire rated wall membranes, both external and internal options.
- Cavity trays - we offer one of the most comprehensive ranges on the market and are recognised for our expertise in this area.
- Loft access hatches with insulation, fire protection and security options.
- Building ventilation including wall and window ventilators.
- STA Assure Gold level accreditation for the structural timber industry. This is in addition to Glidevale Protect's other quality hallmarks, management systems and external product performance certification.



Roofing Division

Roofing Underlays
Roofing Ventilation
Roofing Accessories
Technical Support

EXPANDED EJOT DDS-Z RANGE SIMPLIFIES INSTALLATION OF DEEPER SOFFIT LINERS

New fastener lengths in EJOT's DDS-Z range, exclusively available in the UK, are enabling much deeper levels of soffit insulation to be installed easily and efficiently, thanks to the screw's ability to anchor effectively into concrete with an embedment of just 25 mm.

Existing DDS-Z fasteners in lengths including 275, 300, 325 and 350 mm are already proving popular with installers tasked with meeting higher thermal-performance and fire-resistance objectives in projects such as car parks, undercrofts and other 'cold' spaces, over which residential or commercial accommodation is built.

The latest expansion of the EJOT DDS-Z range will enable similarly streamlined installation of further increased soffit depths to achieve even higher performance, with a fastener length of 400 mm being launched by the end of the first quarter of 2026. This will accommodate an insulation thickness of 375 mm.

Despite the extended fastener lengths, however, all versions still only require a 25 mm embedment into the concrete. This reduces the potential for impacting on reinforcement within the concrete, which could add time, complexity and cost to the project.

In addition, because the screw does not expand, it is more favourable for use with pre-stressed concrete beams.

The DDS-Z brings together a premium quality concrete screw with the EJOT DD-T washer. As a fastener specifically designed for the attachment of ceiling insulation and acoustic boards to concrete soffits, the DDS-Z is a steel screw featuring a duplex coating and self-tapping thread for use in cracked and non-cracked concrete.

It also has a C1 - C3 corrosion resistance classification.

Find out more at www.ejot.co.uk/DDS-Z_Extended_Lengths.



FALLPROTEC STRENGTHENS ITS PRESENCE IN THE UK

Over the past twelve months FALLPROTEC has successfully established its presence in the United Kingdom, marking a significant milestone in the company's continued expansion.

Since launching in the UK, Fallprotec has collaborated closely with a growing network of approved installers, supporting them with training, technical guidance and project specific expertise across a wide range of façade access and fall protection applications.

In response to strong demand, Fallprotec is pleased to announce that it now holds stock of its highly popular Securope® horizontal lifeline systems at its facilities in Northamptonshire. This investment ensures faster delivery times, improved project responsiveness and enhanced support for partners working on roofing, façade access, and building maintenance safety solutions.



Holding stock locally further reinforces Fallprotec's long term commitment to the UK market and the needs of its installer network.

Alongside stock expansion, Fallprotec has continued to strengthen its UK offering through new technical resources, additional CPD material for architects and specifiers, and increased on site support for complex projects. Several high profile installations—ranging from major refurbishment schemes to new build developments—have highlighted the reliability,

flexibility, and robustness of the Securope® system and the wider Fallprotec portfolio.

With momentum building and new initiatives underway, Fallprotec looks forward to another year of growth, innovation, and strong partnerships across the UK height safety and façade access industry.

For more information on Fallprotec's façade access and fall protection equipment please visit fallprotec.com.

ANOTHER REASON TO ATTEND THE UK ROOFING AWARDS

EMPLOYEE EXCELLENCE

Recognise the hard work and achievements of your employees, boosting staff morale.



SPECIALIST RECRUITMENT FOR THE ROOFING INDUSTRY

The Externals Group is delighted to introduce itself to fellow NFRC members. It is the UK's only roofing-industry-exclusive recruitment agency, and proud to call this sector home.

Whether companies are looking to strengthen their teams with permanent hires or need reliable contractor support to meet project demands, The Externals Group has them covered. Its expertise spans the full spectrum of roofing recruitment, from skilled labour through to director-level appointments, with additional specialisms in cladding and façade.

To find out more please email hello@theexternalsgroup.com or visit www.theexternalsgroup.com.

What sets the group apart is simple: roofing is all it does. This singular focus means it truly understand its clients' businesses, their challenges, and the calibre of people they need. This is why it maintains an exceptionally-high success rate in matching the right candidates with the right companies.

As fellow NFRC members, **THE EXTERNALS GROUP** is here to support the industry it is passionate about.

If you are planning to grow your team or simply want to have a conversation about your recruitment needs, The Externals Group would love to hear from you.



TACKLING SKILLS SHORTAGE: BMI ACADEMY LAUNCHES FLAT ROOF MATERIALS ESTIMATING COURSE



Roofing specialist **BMI UK & IRELAND** has launched an industry-leading flat roof materials estimating course as part of its continued drive to address the roofing industry's growing skills shortage.

Developed by the BMI Academy's expert Training Team, the course responds to increasing demand for practical training on flat roof materials estimation.

The flat materials estimating course aims to tackle the gap in available training for flat roofing professionals in the UK. Combining theoretical and practical learning, it helps

contractors gain confidence, avoid common estimation errors and deliver accurate, quality project outcomes.

Steven Taylor, Technical Specification Manager at BMI, said: *"A common mistake when ordering materials for a flat roofing project is underestimating requirements.*

"Estimators must account for a variety of factors to ensure accurate material quantity take-offs and minimise waste. Our course highlights these key considerations, helping contractors plan effectively and achieve reliable, quality installations."

Stuart Farnell, Lead Technical Trainer at BMI Academy, added: *"Since the introduction of our pitched material estimating course, we've frequently been asked for a flat equivalent.*

"It's a completely different set of skills, and we're fortunate to have a team that's rich in specialist knowledge, allowing us to develop courses that directly meet our customers' needs."

BMI Academy remains committed to supporting and developing the future of the roofing industry through quality, accessible training.

To find out more or book on to the new flat roof estimating course please visit www.bmigroup.com/uk/bmi-academy.



CHOOSING THE RIGHT FLAT ROOF REFURBISHMENT



Refurbishing flat roofs in the UK requires a careful balance of technical assessment, regulatory compliance and long-term performance. Many existing roofs are reaching their design life limit, and refurbishment is often more cost-effective than replacement.

Two common strategies are overlaying existing roofs or stripping back to the deck. Overlays are effective where the existing roof is fundamentally sound, delivering improved waterproofing with minimal disruption.

FATRA FF807 membrane (2.6 mm thick, 300 g/m² fleece-backed) can be installed directly over existing bitumen roofs. Alternatively, Fatra FF810 reinforced membrane can be mechanically fixed over a fleece separation layer.

However, overlays only work if the underlying build-up is dry, stable, and capable of supporting the new system. Where moisture, material deterioration, or incompatible products are present, stripping back to the deck is the preferred option.

Core samples and condition surveys are critical for understanding the existing construction, moisture levels, insulation type and deck condition.

A thorough survey ensures the selected waterproofing system is compatible, meets current Building Regulations, including thermal requirements, and delivers the expected service life. Early investigation reduces risk, prevents premature failure, and ensures flat roof refurbishments perform as intended for years to come.

It is also worth considering that current fire testing (CEN/TS 1187) only evaluates new builds and therefore a pragmatic approach is required for overlays. In a successful BROOF(t4) test, the fire typically does not penetrate the upper layer of insulation, so an overlay of new insulation could be used to provide fire regulation compliance, as discussed in NFRC guidance note GN71.

For more information on Fatra's products please visit www.fatra.co.uk.

PREMIERLINE: PROTECTING THE TOOLS THAT KEEP YOU WORKING



For roofers, tools are essential. Without them, work stops, income is lost and projects are delayed.

Unfortunately, tool theft remains a growing problem nationwide, with vans and construction sites frequently targeted due to the high value and portability of equipment. Once stolen, tools are rarely recovered, leaving tradespeople to face replacement costs, missed deadlines and unhappy clients.

Fortunately, reducing the risk of theft doesn't always require major expense. **PREMIERLINE BUSINESS INSURANCE** offers advice on simple habits, combined with improved security and the right insurance, that can make a difference.

Where possible, removing tools from vans overnight and storing them indoors is the most effective deterrent. If this isn't practical, taking out high-value items, keeping tools out of sight and parking in well-lit or CCTV-covered areas can help.

Upgrading van security with deadlocks, alarms, internal safes, and visible deterrents like warning stickers can also discourage thieves.

Making tools traceable is also important. Recording serial numbers, keeping receipts, photographing equipment and marking tools with engraving or UV pens makes them harder to sell and easier to recover.

On longer projects, secure on-site storage such as locked containers, combined with lighting or temporary CCTV, enhances protection.

Even with strong security, insurance is vital. It is important to ensure that your insurance policy covers your tools; check any policy exclusions and ensure the insured value reflects the true worth of your equipment.

By protecting your tools, you're protecting your livelihood.

To find the right level of protection for your roofing business, contact **David Thornton**, roofing insurance expert at Premierline, on **0330 102 6170** or visit premierline.co.uk.

ACTIS AWARDED SILVER MEDAL FOR SUSTAINABILITY AND CSR



Insulation specialist **ACTIS** has been awarded a silver medal by a leading global sustainability and corporate social responsibility organisation.

The recognition, by EcoVadis, means that Actis, headquartered in south west France, is among the top 15 per cent of performers from 125,000 companies assessed over the past twelve months.

The award, which acknowledges a company's positive intent to improve its sustainability management performance, follows Actis' achievement of a bronze EcoVadis medal in 2024.

The assessment awards marks against 21 criteria in four categories—environment, ethics, labour and human rights, and sustainable procurement—in line with EcoVadis' mission to enable businesses to improve the planet and people's lives.

Actis' responsible sourcing score of 84 per cent puts the insulation manufacturer in the top one per cent of EcoVadis-assessed companies in the plastics manufacturing sector.

Its overall score, along with its labour and human rights mark, put Actis among the top three per cent of companies assessed by EcoVadis in the sector, while its ethics put it in the top four per cent.

Environmentally, Actis is among the top seven per cent of companies assessed by EcoVadis in the plastics manufacturing sector.

The award is the latest recognition of Actis' drive to minimise its impact on the environment. Its very low-energy production process consumes no water, its zero-waste policy sees all off-cuts recovered, crushed and reintroduced into the manufacturing process and all its products are 100 per cent recyclable.

For more information please visit www.insulation-actis.com.



THE EVOLUTION OF LEAD ROOFING: UNDERSTANDING VENUS LEAD

Traditional lead roofing has long presented contractors with a familiar challenge: the waiting period for natural patination and the inevitable white streaking that occurs during initial weathering.

Venus Lead from **CALDER** represents a technical advancement that addresses these longstanding installation considerations.

This factory-treated lead sheet features a metallic surface treatment applied to both faces during manufacturing, creating a pre-patinated finish, eliminating white oxidation lines that are typically seen on newly-installed lead.

The result is an immediately uniform appearance across roofing surfaces and façades, without the extended weathering period.

The practical implications centre on installation efficiency. Contractors can eliminate post installation patination treatments while achieving aesthetic consistency on visible surfaces.

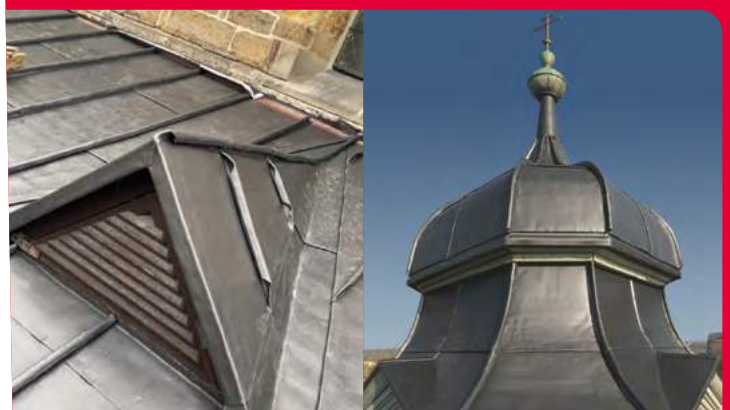
This proves particularly relevant for large area applications, heritage restoration projects and contemporary architecture where finish quality impacts overall design integrity.

Leadworkers also benefit from using Venus Lead because of its protective coating on both sides. From a health and safety perspective, they are not handling the raw material. Both faces are treated during production, all while conforming to BS EN 12588 requirements.

Like conventional lead sheet, Venus Lead maintains full recyclability and is manufactured from recycled lead content. The factory-applied treatment provides weather resistance against rain and UV exposure while preserving the material's inherent durability characteristics.

For specification purposes, the product is available in standard lead sheet gauges and roll dimensions compatible with existing roofing systems and installation practices.

For further information on Venus Lead please call **0191 249 3840**, email sales@calderlead.co.uk or visit www.calderlead.co.uk.



NFRC SUPPLIER MEMBERS

MANUFACTURERS

A. Proctor Group Ltd

www.proctorgroup.com
01250 872261
contact@proctorgroup.com

ACO Building Drainage

www.aco.co.uk/aco-building-drainage
01462 816666
abdmarketing@aco.co.uk

Actis Insulation Ltd

www.insulation-actis.com
01249 462888
solutions@insulation-actis.com

Airflow (Nicol Ventilators) Limited

www.airflow-vent.co.uk
01425 611547
sales@airflow-vent.co.uk

Alumasc Building Products Ltd

www.alumascroofing.com
01744 648 400
info@alumascroofing.com

Ampteam Ltd

www.ampteam.co.uk
01384 252777
unifold@ampteam.co.uk

Apollo Roofing Solutions

www.apolloroofingsolutions.co.uk
01827 54281
apollo-enquiries@hbfuller.com

Ash and Lacy Building Systems Ltd

www.ashandlacy.com
0121 525 1444
will.bishop@ashandlacy.com

Axter Ltd

www.axter.co.uk
01473 724056
info@axterltd.co.uk

Bauder Ltd

www.bauder.co.uk
01473 257671
technical@bauder.co.uk

BMI UK & Ireland

www.bmigroup.com/uk
01908 015760
sales.admin@bmigroup.com

Bové Draadproducten BV

bove.eu
00 31 486 411 868
sales@bove.eu

Breedon Group

www.breedongroup.com
028 92 647100
productsales@breedongroup.com

Brett Martin Daylight Systems Ltd

brettmartin.com/daylight-systems
02476 602022
daylight@brettmartin.com

Buzon UK Ltd

buzonuk.com
0208 614 0874
info@buzonuk.com

CA Group Ltd

www.cagroup.co.uk
01388 834242
development@cagroup.co.uk

Calder Industrial Materials Ltd

calderlead.co.uk
07957 728706
cphilliskirk@calderlead.co.uk

Carlisle Construction Materials Ltd

www.ccm-europe.com
01623 627285
info.uk@ccm-europe.com

Cardinal Steels Ltd

cardinalsteels.com
01527 330000
sales@cardinalsteels.com

Cedral

www.cedral.world/en-gb
01283 501555
matthew.castles@etexgroup.com

Centaur Technologies

www.centaurroofing.co.uk
01772 453107
technical@centaurroofing.co.uk

Collyweston Stone Slate Mine

collywestonstoneslatemine.co.uk
01780 444627
contact@collywestonstoneslatemine.co.uk

CPI Mortars Ltd

www.cpieuromix.com
01698 464110
enquiries@cpieuromix.com

Cromar Building Products Ltd

cromarbuildingproducts.com
01977 663133
whitley-sales@uk.sika.com

CUPA Pizarras S.A

www.cupapizarras.com/uk
020 3318 4455
uk@cupapizarras.com

Cure It Composites Ltd

www.cureit.com
01942 518150
enquiries@cureit.com

Danosa UK Ltd

www.danosa.com
0845 074 0553
uksales@danosa.com

DEKS Industries Europe Ltd

www.deks.co.uk
01275 858866
sales@deks.co.uk

Don & Low

www.donlow.co.uk
0808 169 4444
membranes@donlow.co.uk

DuPont Tyvek

www.dupont.co.uk
08444 068 722
tyvek.construction@dupont.com

Eco Green Group

ecogreengroup.co.uk
01277 355705
info@ecogreengroup.co.uk

Edilians

www.edilians.com
07818 043808
geoffrey.doran@edilians.com

EJOT UK Ltd

www.ejot.co.uk
01977 687040
info@ejot.co.uk

Elevate UK and Ireland

www.holcimelevate.com
01565 756185
info@ewscldt.co.uk

Euroclad Group Ltd

www.eurocladgroup.com
02922 010101
enquiries@eurocladgroup.com

Fakro GB Ltd

www.fakro.co.uk
01283 554755
sales@fakrogb.com

Fallprotec UK Ltd

fallprotec.com
07769 227310
ts@fallprotec.com

Fatra UK Ltd

fatra.co.uk
02920 487954
sales@fatra.co.uk

Filon Products Ltd

www.filon.co.uk
01543 687300
sales@filon.co.uk

Firth Steels Ltd

www.firth-steels.co.uk
01484 405940
info@firth-steels.co.uk

Flex-R Ltd

www.flex-r.co.uk
01494 448792
enq@flex-r.co.uk

FOAMGLAS®

www.foamglas.co.uk
03301 227 638
info@foamglas.co.uk

FP McCann Ltd

www.fpmccann.co.uk
01455 290780
sales@fpmccann.co.uk

G L Profiles Ltd

glprofiles.co.uk
01354 694694
sales@glprofiles.co.uk

Garland UK

garlanduk.com
01174 401050
contact@garlanduk.com

Genius Roof Solutions

geniusroofsolutions.com
01257 793113
joanna@geniusroofsolutions.com
SKILL-BUILD
Sponsor

Glidvale Protect

www.glidvaleprotect.com
0161 905 5700
info@glidvaleprotect.com
SKILL-BUILD
Sponsor

Greenpolly Ltd

greenpolly.co.uk
07859 894827
greenpolly@virginmedia.com

Guttercrest Ltd

www.guttercrest.co.uk
01691 663300
info@guttercrest.co.uk

H C Wraxall & Co Ltd

www.wraxalls.co.uk
01797 322396
office@wraxalls.co.uk

Hambleside Danelaw Ltd

www.hambleside-danelaw.co.uk
01327 701900
sales@hambleside-danelaw.co.uk

HD Sharman Ltd

www.hdsharman.co.uk
01298 812371
info@hdsharman.co.uk

Hera Waterproofing Ltd

herawaterproofing.co.uk
0121 828 8953
phil@herawaterproofing.co.uk

HS Butyl Ltd

www.hsbutyl.com
01590 684400
sales@hsbutyl.com

ICB (Waterproofing) Ltd

www.icb.co.uk
01202 785200
info@icb.co.uk

IKO PLC

www.ikogroup.co.uk
01257 255771
info.uk@iko.com

InStar UK Ltd

www.instar-uk.co.uk
01858 456949
info@instar-uk.co.uk

Magply

magply.co.uk
01621 776252
sales@magply.co.uk

Jordeson Timber

www.jordeson.co.uk
01904 633351
office@jordeson.co.uk

Kingspan Insulation Ltd

www.kingspan.com
01544 388 601
info@kingspaninsulation.co.uk

Kingspan Ltd

www.kingspan.com
01351 706101
aisling.sands@kingspan.com

Klober Ltd

www.klober.co.uk
03306 780088
info@klober.co.uk

Knauf Insulation Ltd

www.knauf.co.uk
01744 766866
marketing.uk@knaufinsulation.com

Kytun (UK) Ltd

www.kytun.com
01684 293702
info@kytun.com

LAMILUX UK

lamiluxskylights.co.uk
01284 749051
sales@lamilux.co.uk

Liquid Roofing Systems Ltd

www.lrs-systems.co.uk
01948 841 877
enquiries@lrs-systems.co.uk

Mannok Build Ltd

www.mannokbuild.com
08000 322 122
sales@mannokbuild.com

Mapei (UK) Ltd

www.mapei.co.uk
01902 637422
ukmarketing@mapei.co.uk

Manthorpe Building Products

www.manthorpebp.co.uk
01773 303000
mbp.care@manthorpebp.co.uk

Marley Ltd

www.marley.co.uk
01283 722588
info@marley.co.uk

Metal Solutions Ltd

www.metalsolutions.uk.com
01204 491800
sales@metalsolutions.uk.com

Nimbus Roof Technologies Ltd

nimbusrooftech.com
01799 610788
info@nimbusrooftech.com

Nordic Forest (UK) Ltd

www.nordicforest.co.uk
0208 304 1016
andy@nordicforest.co.uk

Northstone NI Ltd- Materials Division

www.northstonerooftiles-gb.com
02870 321100
enquiries@northstone-ni.com

Paslode Spit (ITW Construction Products)

www.itwcp.co.uk
0800 833 381
PO-CS@itwcp.com

Pentagon Specialist Products Ltd

www.pentagonsp.com
07718 936399
sales@pentagonsp.com

Permavent Ltd

www.permavent.co.uk
01305 766703
enquiries@permavent.co.uk

Pizarras Samaca, S.A.U

www.samaca.com
00 34 988 335 555
samaca@samaca.com

Polyroof Products Ltd

www.polyroof.co.uk
01352 735135
admin@polyroof.co.uk

PREFA UK LTD

uk.prefa.com
020 7795 8124
office.uk@prefa.com

Premier Sealant Systems Ltd

www.sealprem.com
01724 864100
sales@sealprem.com

Protan (UK) Ltd

www.protan.co.uk
01925 658 001
sales@protan.co.uk

Protektor Group UK Ltd

www.protektor.co.uk
01562 515200
sales@protektor.co.uk

Proteus Waterproofing

www.proteuswaterproofing.co.uk
01268 777871
enquiries@proteuswaterproofing.co.uk

Radmat Building Products Ltd

www.radmat.com
01858 410372
techenquiries@radmat.com

Recticel Insulation UK Ltd

www.recticelinsulation.com
017820 590470
technicalservices@recticel.com

Remix Dry Mortar Ltd

www.remixdrymortar.co.uk
01329 231200
info@remixdrymortar.co.uk

RENOLIT Alkorplan

renolit.com/en/industries/home-building/exterior/roofing
01670 718283
matthew.adamson@renolit.com

Restec Roofing Ltd

www.restecroofing.co.uk
0845 4504 193
enquiries@restecroofing.co.uk

ROCKWOOL UK Ltd

www.rockwool.co.uk
01656 862621
info@rockwool.com

Rose Roofing Ltd

www.rose-roofing.co.uk
01977 516044
sales@rose-roofing.co.uk

Rubberseal Ltd

www.rubberseal.com
01290 559 333
info@rubberseal.com

S R Timber Ltd

www.sr-timber.co.uk
01623 446800
sales@sr-timber.co.uk

SKILL-BUILD

Sponsor

Shield Membranes

www.shieldmembranes.com
020 7740 9279
info@shieldmembranes.com

Siderise Insulation Ltd

www.siderise.com
01656 730833
salesteam@siderise.com

Sievert UK

www.sievert.se
01536 310300
sales@rothenberger.co.uk

Sika Ltd

www.gbr.sika.com
01707 394444
enquiries@uk.sika.com

Sky Garden Greenroofs Ltd

www.sky-garden.co.uk
01242 620905
enquiries@sky-garden.co.uk

Solfit Ltd

solfit.co.uk
07775 897980
sales@solfit.co.uk

Soprema UK

www.soprema.co.uk
0330 058 0668
info@soprema.co.uk

Strata Waterproofing Ltd

www.stratawaterproofing.com
028 9030 2924
info@stratawaterproofing.com

Swisspearl GB Ltd

www.swisspearl.com
01925 748 246
info@gb.swisspearl.com

Topseal Systems Ltd

www.topseal.co.uk
01423 886 495
enquiries@topseal.co.uk

Tor Coatings Ltd

tor-coatings.com
0191 410 6611
enquiries@tor-coatings.com

Triflex (UK) Limited

www.triflex.co.uk
01785 819119
info@triflex.co.uk

Ubbink UK Ltd

www.ubbink.co.uk
01604 433000
sales@ubbink.co.uk

Unilin Insulation UK Ltd

www.unilininsulation.co.uk
00 353 46 906 6097
marketing.uk@unilin.com

Vanquish Systems Ltd

vanquishsystems.com
01902 271863
info@vanquishsystems.com

VELUX

www.velux.co.uk
01592 778 225
sales@velux.co.uk

Wallbarn Ltd

www.wallbarn.com
0208 916 2222
sales@wallbarn.com

Welsh Slate Ltd

www.welshslate.com
01248 600656
enquiries@welshslate.com

WestWood Liquid Technologies Ltd

www.westwood-uk.com
0800 808 5480
orders@westwood-uk.com

Wienerberger Ltd

www.wienerberger.co.uk
01427 871200
simon.garbett@wienerberger.com

W J Horrod Ltd

www.wjhorrod.co.uk
020 8539 8746
info@wjhorrod.co.uk

MERCHANTS

Belgrade Insulations Ltd

www.belgradeinsulations.com
0113 252 6524
info@belgradeinsulations.com

Chandlers Roofing Supplies

www.chandlersroofing.co.uk
01273 815100
enquiries@chandlersbs.co.uk

CTF Insulation Ltd

www.ctfinsulation.co.uk
0333 207 0870
office@ctfinsulation.co.uk

Euro Building Supplies

www.eurobuildingsupplies.co.uk
07813 012197
geoff@eurobuildingsupplies.co.uk

Fixing Point Ltd

www.fixingpoint.com
01242 265100
sales@fixingpoint.com

Galaxy Insulation & Drylining Ltd

www.galaxyinsulation.co.uk
0114 700 5702
garyanthony@galaxyinsulation.co.uk

Harrowden Turf Ltd

www.harrowdenturf.co.uk
01832 777100
marketing@harrowdenturf.co.uk

Imperial Roofing Supplies UK Ltd

imperialroofingsupplies.co.uk
07827 332601
sales@imperialroofingsupplies.co.uk

Independent Roofing Supplies Ltd

www.irsl.co.uk
01273 516999
enquiries@irsl.co.uk

Industrial Roofing Products Ltd

www.irpltd.co.uk
01454 299588
sales@irpltd.co.uk

Lagan Building Solutions Ltd

www.lbsproducts.com
0800 096 7612
info@LBSproducts.com

Langley Group

www.langley.co.uk
01327 704778
enquiries@langley.co.uk

Linroc Ltd

www.linroc.co.uk
01793 764000
info@linroc.co.uk

MAK Fastener Specialists (NI) Ltd

www.makfasteners.com
0161 866 8164
uksales@makfasteners.com

Meir Roofing & Insulation Supplies

www.meir-roofing.co.uk
01405 780444
sales@meir-roofing.co.uk

Mercury Building Products Ltd

mercurybuildingproducts.co.uk
01246 292816
orders@vaprfree.co.uk

Northern Slate Supplies Limited

www.northernslate.co.uk
07487 870070
john@northernslate.co.uk

Onestop Roofing Supplies Ltd

www.onestoproofingsupplies.com
0141 445 6777
natalie@weareonestop.com

PermaGroup

permagroup.co.uk
01773 608 839
sales@permagroup.co.uk

Raven Roofing and Building Supplies Ltd

ravenroofingsupplies.co.uk
0208 893 8954
info@ravenroofingsupplies.co.uk

Robert Price Roofing

www.robert-price.co.uk
01873 858585
enquiries@robert-price.co.uk

RR Stone Ltd

rrstone.co.uk
01539 822666
sales@rrstone.co.uk

Saucer Solutions Ltd

www.saucersolutions.co.uk
0141 774 0065
sales@saucersolutions.com

SIG Roofing Head Office

www.sigroofing.co.uk
01480 466777
info@sigroofing.co.uk

SKILL-BUILD

Sponsor

Skyline Roofing Centres

www.skylineroofing.co.uk
0208 571 6128
info@skylineroofing.co.uk

Spanish Slate Quarries UK Ltd

www.ssqgroup.com
020 8961 7725
info@ssq.co.uk

Stephens Industries Ltd

www.stephens-industries.co.uk
01225 810324
info@stephens-industries.co.uk

Tapered Roofing Systems Ltd

taperedroofing.co.uk
01938 552255
info@taperedroofing.co.uk

TaperedPlus Ltd

www.taperedplus.co.uk
01642 677342
sales@taperedplus.co.uk

Tektum Supplies Ltd

tektumsupplies.co.uk
0141 739 9440
sales@tektumsupplies.co.uk

UK Roofing Supplies Ltd

www.ukroofingsupplies.co.uk
01753 539820
info@ukroofingsupplies.co.uk

Wonderbuilds Inc. Limited

www.wonderbuilds.co.uk
0208 208 2121
admin@wonderbuilds.co.uk

SERVICE PROVIDERS

4 Cladding Services

www.vaclifting.co.uk
03707 417600
info@vaclifting.co.uk

AbiCAD Ltd

www.abicad.co.uk
01489 589454
admin@abicad.co.uk

Adler Fairways Insurance Brokers Ltd

www.adlerfairways.co.uk
0121 764 5500
info@adlerfairways.co.uk

Aether

aethernrg.com
07400 763 252
tsalome@aethereenergy.me

Buileach Construction Services Ltd

buileach.co.uk
07777 752145
ross@buileach.co.uk

CADIS MGA Ltd

cadismga.co.uk
01752 910400
phil@cadismga.co.uk

Clear Insurance Management Ltd

clearinsurancemanagement.com
01622 683913
construction@thecleargroup.com

Dale Roof Testing and Surveys Ltd

daleltd.co.uk
07703 337997
dale@daleltd.co.uk

Drummond Roofing Consultancy Ltd

www.drummondroofingconsultancy.co.uk
07515 027576
gilles@drummondroofingconsultancy.co.uk

GeoShield Ltd

www.geoshield.co.uk
01133 208639
killen@geoshield.co.uk

GLA Group Ltd

gla-group.uk
07838 243312
andy@glagroup.uk

HICH Ltd

hich-ltd.co.uk
0345 257 0858
admin@hich-ltd.co.uk

James Hallam Real Estate and Construction

www.jameshallam.co.uk
01923 603 168
charlie.fossey@jameshallam.co.uk

Lucideon Ltd

lucideon.com
01785 331874
query@lucideon.com

McCarron Coates Ltd

www.mccarroncoates.com
0113 298 3489
luigi@mccarroncoates.com

Premierline Business Insurance Broker

premierline.co.uk
0330 102 2173
stephanie.conway@premierline.co.uk

QANW

www.qanw.co.uk
01292 268020
info@qanw.co.uk

QURE Group Ltd

quiregroup.co.uk
0800 211 8000
enquiries@quiregroup.co.uk

Roof Test Consultancy Ltd

www.rooftestconsultancy.co.uk
0208 470 8118
office@rooftestconsultancy.co.uk

Roof Tests & Surveys Ltd

rooftestsandsurveys.co.uk
07955 206708
info@rooftestsandsurveys.co.uk

Surveyroof Ltd

www.surveyroof.co.uk
0345 257 7663
sales@surveyroof.co.uk

TeamPoint

teampoint.app
07791 232895
rosie@teampoint.app

The Externals Group

theexternalsgroup.com
07729 093137
hello@theexternalsgroup.com

The Pallet LOOP

www.thepalletloop.com
0800 024 6130
info@thepalletloop.com

Thornton Consulting Group Ltd

www.thorntonconsulting.co.uk
01342 410508
mail@thorntonconsulting.co.uk

TAKE A SQUIRT



Working in partnership to prevent skin cancer and promote early detection

95%

of roofers we surveyed reported repeated sunburn...

a leading cause of melanoma skin cancer!

Pop down to your local branch and **Take a Squirt** of Sun cream!

Protect yourself from skin cancer



SLIP ON
CLOTHING



SLOP ON
SUNSCREEN



SLAP ON
A SUN HAT



SLIDE ON
SUNGLASSES



SHADE
DURING BREAKS