

ROOFING TIMES

ISSUE

25

BAUDER: **ROOFING** **SOLUTIONS**

FOR A GREENER FUTURE



**IN THIS
ISSUE**

SKYLINE ROOFING
CENTRES:
TERREAL TILES

GET IN THE LOOP
AND MOVE TO
REUSABLE PALLETS

ECO GREEN GROUP
TRANSFORMS
GARDEN ROOF

SIG ROOFING'S
SUCCESSFUL
ROADSHOW

UK ROOFING AWARDS 2025—FINALISTS

UK ROOFING AWARDS 2025



Following a record number of entries into the 2025 UK Roofing Awards, the judges have completed the mighty task of reviewing each submission and the 2025 shortlist has been finalised. A total of 16 categories have finalists announced across a broad range of roofing and cladding disciplines.

The Roofing Awards will be taking place on **Friday 9 May 2025** at the Intercontinental London—The O2. **Tables for the event are available to book now, visit bit.ly/RA2025tix.**

The Industry Choice Award, sponsored by Radmat Building Products, will allow the industry to have its say on its favourite project. **Voting is now open, visit bit.ly/RA2025_IC.**

#1 BITUMINOUS HOT APPLIED LIQUID WATERPROOFING sponsored by Carlisle Construction Materials Ltd



Eclipse Leisure Centre—
D F Roofing Ltd

Welbourne Project—Complete
Waterproofing Services UK, working with Proteus Waterproofing Ltd

Google KGX1—
Lindner Prater Ltd

40 Leadenhall—
Arc Waterproofing Ltd, working with Proteus Waterproofing Ltd

#4 GREEN ROOFING sponsored by Bauder Ltd



Millennium Bridge House—
Eco Green Group

Tesco Weston-Super-Mare—
Weatherproofing Advisors Ltd

Rhodes Way—
Eco Green Group

The BedZED Estate—
Inspire Contract Services Ltd

#2 COLD APPLIED LIQUID WATERPROOFING



Green Park—
Eclipse Roofing and Waterproofing Ltd

Spectrum House—
MLG UK Ltd working with Polyroof Products Ltd

Marylebone House—
Essential Building Services Ltd working with Proteus Waterproofing Ltd

Whinfell Forest Center Parcs—
Central Group

#5 HERITAGE ROOFING sponsored by Glidevale Protect



Christ's College Cambridge—
Claude N Smith Ltd

Wormington Grange—
Roofworx (UK) Ltd

Grosvenor Building, Manchester—
Fulwood Roofing Services (Northern) Ltd

Newton Hall—
Emerton Roofing (Western) Ltd

#3 FULLY-SUPPORTED METAL



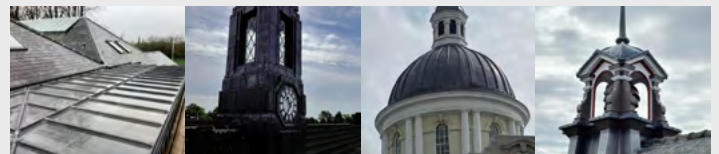
Warrenhurst—
Install Zinc Ltd

W3 Manchester—
Longworth Building Services Ltd

Paxton House—
Richardson Projects Ltd

Holtwhites Hill—
Install Zinc Ltd

#6 LEADWORK sponsored by Lead Sheet Training Academy (LSTA)



Windsor Project—
Butler Brothers Roofing Ltd

High Storrs—
Stoic Roofing and Construction

Lloyds Bank Penzance—
EWN Leadwork Specialists Ltd

West Bromwich Town Hall—
NRA Roofing & Flooring Services Ltd

#7 MASTIC ASPHALT
sponsored by Mastic Asphalt Council (MAC)



Keble College, Oxford—Oxford Asphalt Co Limited

The Harris, Preston—NRA Roofing & Flooring Services Ltd

Bramley-Moore Dock—BriggsAmasco Ltd

MOD, Shoeburyness—Fraden Contracts Ltd

#12 ROOF TILING
sponsored by Marley Ltd



Glebe House—Cornerstone Roofing Ltd

Beechwood Central West, Basildon—Complete Waterproofing Services Ltd

Aneurin Bevan Court—Complete Waterproofing Services Ltd

London England Temple Manor House and Buildings—Clarke Roofing Southern Ltd

#8 MULTI-DISCIPLINE PROJECT >£250K sponsored by Harrowden Turf



Manor House—Jackson & Dix Roofing Ltd

Co-op Live—Lindner Prater Ltd

TIF Ward, Christie Hospital—Longworth Building Services Ltd

Colchester Northern Gateway—MAC Roofing & Contracting Ltd

#13 SHEETING AND CLADDING sponsored by Euroclad Group Ltd



Everton FC—Lindner Prater Ltd

Rutland Mills—Metclad Contracts Ltd

Ardgowan Distillery—Fowler McKenzie Ltd

UK Greetings Shed 2—Blade Roofing Ltd

#9 RAINSCREEN FAÇADES



Project Dexter—Helios Building, Harwell—Longworth Building Services Ltd

Stockport Interchange—Longworth Building Services Ltd

Wellcome Trust—Richardson Projects Ltd

New Street Square—Richardson Projects Ltd

#14 SINGLE PLY ROOFING sponsored by Recticel Insulation UK Ltd



Dorothy Pattison Hospital—RLW Roofing Ltd

Millennium Powerhouse, Moss Side—D&D Roofing Ltd working with ICB (Waterproofing) Ltd

Hill View—Invictus Roofing Ltd

Bottle Works, Guildford—Mariner Projects Ltd

#10 REINFORCED BITUMEN MEMBRANES
sponsored by Sika Ltd



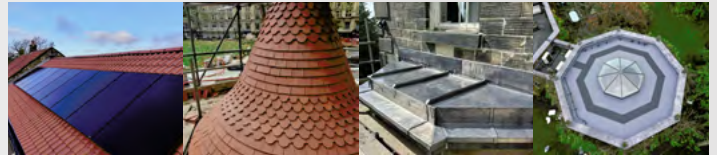
UKAEA—Jet Roofs—Amber Construction Services Ltd

The Capital Building—BBR Roofing Ltd

Hafod Eryri-Yr Wyddfa, Snowdon—OBR Construction working with Sika Ltd

Memorial Hospital, London—Inspire Contract Services Ltd

#15 SMALL SCALE PROJECT <£25K



South Lane Farm, Moorsholm—Samuel Moore Roofing

Finsbury Circus Gazebo—Karl Terry Roofing Contractors Ltd

Never Haugh House—NRA Roofing & Flooring Services Ltd

Lady McAlpine—Roofing Matters Group Ltd

#11 ROOF SLATING sponsored by CUPA PIZARRAS S.A.



The Round House—K L Venning Slaters Ltd

Howells School, Cardiff—M. Camilleri & Sons Roofing Ltd

Baggy Cottage—Jamie Brown Roofing & Leadwork Ltd working with Spanish Slate Quarries UK Ltd

St. Illtyd's Church—M. Camilleri & Sons Roofing Ltd

#16 SOLAR ROOFING sponsored by Sandtoft



Bronllys Community Hospital—Cambrian Roofing Ltd

UCLan School of Veterinary Medicine—Metclad Contracts Ltd

Social Housing, North Ayrshire Council—Marley Contract Services

NT2 - EE Tyneside—John Flowers (Flat and Industrial Roofing) Ltd



BAUDER: ROOFING SOLUTIONS FOR A GREENER FUTURE



BAUDER is one of Europe's leading manufacturers of waterproofing, insulation and roofing systems, including photovoltaic, green and blue roofs. Its solutions enhance energy efficiency, support biodiversity and aid in climate resilience.

The company works closely with clients, contractors and stakeholders to deliver high-performance, durable and viable flat roof solutions. Bauder's national network of technical experts ensures that each project meets practical, environmental and budgetary needs.

With over 165 years of expertise, Bauder has grown into a key player in the roofing industry, providing systems that maximise the environmental benefits of roof spaces. Green roofs can incorporate solar PV for energy or blue roofs for stormwater management, helping clients meet planning conditions, net-zero targets and climate adaptation goals.

Sustainability is at the core of Bauder's business. It is committed to reducing its reliance on fossil materials while ensuring its roofing solutions remain long-lasting and offer value. BauderECO FF insulation exemplifies this commitment, reducing embodied carbon and fossil fuel reliance by 80% while maintaining performance. Certified by REDcert² and EPD, it supports net-zero goals in new builds and refurbishments.

With innovation and a more sustainable future at its core, Bauder continues evolving to help protect property, future generations and the environment, creating lasting, positive change.

For more information please visit bauder.co.uk.

INTRODUCING THE VENT3 EXCEL—THE CHAMPION OF BREATHERS

Step into a new era of superior weatherproofing and performance with the Vent3 Excel by **CROMAR BUILDING PRODUCTS**, a game-changing heavyweight breather membrane designed to deliver unmatched durability and efficiency.

Weighing in at 190 gsm, the Vent3 Excel is one of the heaviest breather membranes on the market, engineered to provide exceptional strength and longevity without compromising breathability. Its robust construction ensures ultimate resistance to wind uplift and water penetration, making it the ideal choice for demanding environments and high-performance roofing applications.



TIME TO GET IN THE LOOP AS MANUFACTURERS MOVE TO

The adoption of green reusable pallets across the construction sector is gathering pace with the news that both **wienerberger UK & Ireland** and **Superglass** have signed deals with **THE PALLET LOOP**, the circular economy pallet reuse scheme for the construction industry.



NFRC WARNS AGAINST USE OF SUB-STANDARD BATTENS

NFRC and timber batten suppliers are again seeing an abundance of sub-standard roofing battens within the UK market that are being marked, coloured and sold as BS 5534-compliant, when in fact they are counterfeit.

These sub-standard goods are becoming an increasingly serious issue for merchants, roofing contractors and their clients.

Using non-compliant battens may result in the contractor having to strip and re-roof a

property should the battens be proven to be sub-standard, and a significant health and safety risk is created by the contractor using non-compliant battens as a foothold, as this is in contravention to the guidelines set out in **HSG33: Health and Safety in Roofwork**.

Using battens that have an inferior quality to certified roofing battens will reduce the longevity of the roof and can potentially put roofing operatives at risk of harm.

BS 5534 states that all graded roofing battens should be marked with the elements shown in

Figure 1. However, marking alone is not proof that the batten has been graded correctly or that it is of the correct standard.

Guidance on this can be found in the NFRC safety alert '**Sub-standard roofing battens**'. A tool box talk has also been produced to highlight what you need to do, and think about, before and during the installation of roofing battens.

For more information please visit nfrc.co.uk.



WHY CHOOSE VENT3 EXCEL?

Unrivalled weight and strength: built to last, the 190 gsm weight guarantees superior tear resistance and long-term durability.

Exceptional breathability: effectively regulates moisture, preventing condensation and protecting the structure beneath.

Enhanced weather protection: withstanding even the toughest conditions, Vent3 Excel shields against wind and water like a true champion.

Versatile and easy to install: designed with contractors in mind, it offers effortless handling and adaptability across various roof designs.

Whether you're safeguarding residential, commercial, or industrial projects, Vent3 Excel delivers unbeatable performance and peace of mind. Join the champions of roofing innovation today and experience the difference of a membrane that works as hard as you do.

VENT3 BREATHERS—BUILT TO EXCEL!

For more information visit cromarbuildingproducts.com or call Cromar Building Products on 01977 663133.

ROOFING AND INSULATION REUSABLE PALLETS



From early April, green reusable LOOP pallets will be used to distribute Superglass's cured glass mineral wool insulation products and wienerberger's Sandtoft roofing tiles.

The switch to reusable LOOP pallets—which are already used by Isover and British Gypsum—is designed to deliver multiple environmental and financial benefits to roofing contractors and distributors, merchants, housebuilders and Tier 1 contractors.

Once in receipt of green pallets, companies can use The Pallet LOOP's nationwide pallet collection service as an alternative to traditional pallet disposal methods, helping them cut waste, reduce carbon emissions and save money. For every green LOOP pallet returned for reuse, The Pallet LOOP will give registered return partners a payback of up to £4.

Paul Lewis, Founder and Managing Director of The Pallet LOOP, said: *"The news that wienerberger and Superglass are moving to The Pallet LOOP reinforces that we are an industry-wide solution that can be used by all kinds of building materials manufacturers to transport products in a more sustainable way."*

"Less than a year since launching we are now moving plaster, insulation and roofing products on our reusable pallets—helping the construction sector drive down waste and carbon emissions and save money."

To register for collections, please email setmeup@thepalletloop.com or call 0800 0246130.

Collections can then be booked by emailing collections@thepalletloop.com.

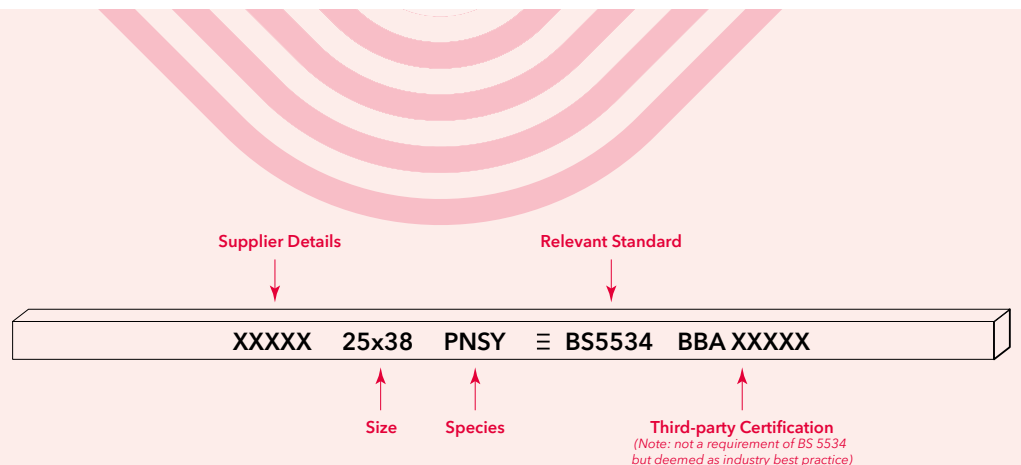


Figure 1: Elements marked on a compliant batten



PROCTOR AIR® BRINGS BENEFITS OF MODERN TECHNOLOGY TO TRADITIONAL SCOTTISH ROOFS

An architect's home is seeing the benefits of its new roof underlay—even though the re-roofing isn't finished yet.

Neil Simpson, a Partner at Wellwood Leslie Architects, is fitting the Proctor Air® himself while renovating the roof of his stone-walled property built in 1902.

Neil explained: *"Proctor Air has been excellent; it is relatively easy to install, and has protected us from the weather. The wind used to whistle through the roof before, but we've seen a difference straight away in reducing that infiltration."*

Situated in an exposed location overlooking the River Tay, the house is subject to the elements. As Neil has continued to live in the property during the work, the underlay had to be capable of protecting the property and its occupants.

Proctor Air has a water resistance classification of W1, and its BBA certificate states the hydrostatic head is greater than one metre. This water hold out performance means Proctor Air can be left exposed for up to three months (although should not be relied upon as being waterproof).

As the frequency and intensity of extreme weather increases, roofs and their underlays need to be capable of withstanding more severe levels of rainfall. A hydrostatic head of at least one metre is the minimum that an underlay should be capable of.

While the re-roofing work has not experienced too much rain, there have been strong winds. Proctor Air can be used in wind zones 1 – 4 without additional measures such as taping joints or additional battens.

To find out more about Proctor Air, please download the brochure from proctorgroup.com/products/proctor-air.



By maintaining its existing structural frame, the project achieved a 61 per cent reduction in carbon emissions.

Eco Green Group assisted with the design of the project and developed it with Rappor Architects.

The rooftop garden sets a benchmark for urban greening, offering public access, environmental benefits and stunning views of St Paul's Cathedral.

Keith Hills, founder of Eco Green Group, said:

"This project is a great example of how teamwork and creativity can transform city rooftops into vibrant green spaces that enhance well-being and sustainability."

"As one of the UK's largest roof gardens, it showcases what's possible with smart design, a clear vision, and strong collaboration."

"This rooftop shows how city roofs can be turned into valuable spaces for people to enjoy, while also helping nature and the environment."

ECO GREEN GROUP TRANSFORMS UK'S LARGEST PUBLIC ROOF GARDEN

Eco Green Group has played a pivotal role in the transformation of Millennium Bridge House, delivering the largest open public roof garden in the UK.

The new rooftop design combines eco-friendly features with urban biodiversity, providing a sustainable and peaceful space.

The company delivered a comprehensive landscaping solution, incorporating innovative features such as a blue roof system for stormwater management and a biodiverse green roof to boost ecological value and urban cooling.

The project also included resin-bound gravel walkways, bespoke planters with greenery, automated irrigation, integrated lighting and stylish outdoor furniture.

The all-electric heating system has enabled the inclusion of a 2,527 m² biodiverse rooftop, complete with a public terrace and restaurant.

To find out more about Eco Green Group's products and services, please visit ecogreengroup.co.uk.

COVER YOUR BATTEN ENDS WITH SR TIMBER BATTEN SHIELD



UK building legislation clearly stipulates that all cut timber roofing batten ends should be properly preserved in every new pitched roofing or re-roofing project, regardless of whether it is for domestic or commercial construction.

This essential practice not only enhances the durability and integrity of roofing structures but also adheres to industry standards, helping to ensure a quality result for every project.

The National House Building Council (NHBC), the largest single approved inspector for Building Regulations in the UK, specifies in its 2024 standards, specifically in chapter 7.2.17 (page 29), that *'Battens and counter battens located at wet or dry verges should have their cut ends treated with a preservative'*.

This guideline is also reflected in the British Standards BS5534: 2014+A2:2018, which serves as a code of practice for slating and tiling on pitched roofs and vertical cladding. It states that *'Cut batten ends at the verge should be treated with a suitable preservative approved for this purpose'*. This requirement is emphasised in legislation and is considered an important area of best practice by the NFRC.

The message is clear; roofers must ensure that all cut ends of roofing battens are treated with a preservative. Batten Shield from SR Timber has been specifically designed for this purpose. This water-based cream makes battens water-repellent, protecting the cut ends from moisture and rot.

The wood pores remain open, allowing the wood to breathe and ensuring optimal moisture regulation. Additionally, the creamy texture of Batten Shield makes it easy to apply, and it is compatible with all types of graded timber roofing battens.

More information on SR Timber Batten Shield can be found at sr-timber.co.uk/Product/batten-shield/

SKYLINE ROOFING CENTRES: PROUD STOCKISTS OF TERREAL TILES



For almost 50 years, **SKYLINE ROOFING CENTRES** have been a leading supplier of roofing materials for both trade professionals and the public in London and the south east. With twelve conveniently-located branches around the M25, high-quality roofing supplies are never far away.

WHY CHOOSE SKYLINE?

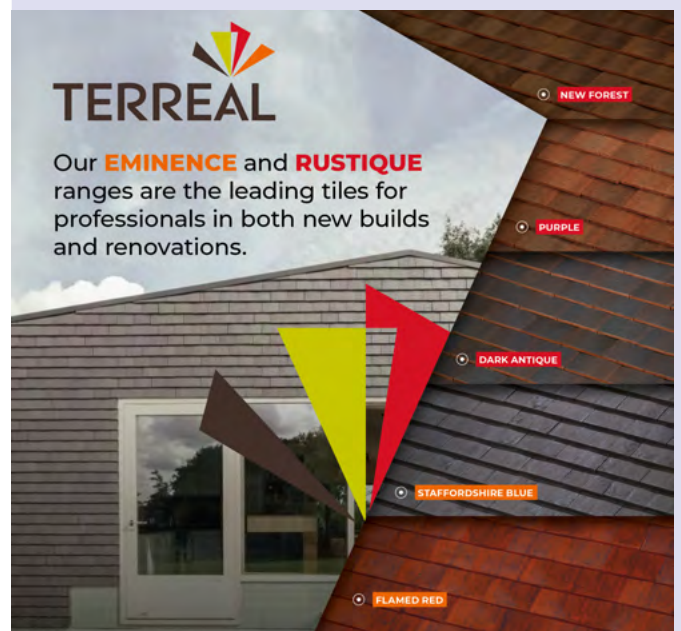
- **Expert support:** Skyline's team of knowledgeable experts is dedicated to providing exceptional customer service and support at every step of a project.
- **Quality products:** Skyline's carefully curated selection of manufacturers ensures that all products meet relevant standards for quality, reliability, and value, accompanied by strong guarantees.
- **Extensive stock and fast delivery:** Skyline's vast branch inventory, supported by two distribution hubs, allows them to offer next-day delivery on thousands of items—ensuring that customers have what they need, when they need it.

SKYLINE'S COMMITMENT

Skyline Roofing Centres are committed to delivering their customers' roofing requirements accurately and promptly, every time, and always at competitive prices.

GET IN TOUCH!

Whether you need a quote or more information about their extensive product range, Skyline Roofing Centres can help. Visit skylinerroofing.co.uk to locate your nearest branch or get in touch today.



PUTTING GLIDEVALE PROTECT IN THE FRAME AT INVERTAY HOMES DEVELOPMENT

Leading building products manufacturer **GLIDEVALE PROTECT** is supplying its construction and roofing membranes for a new timber frame housing development currently being constructed by InverTay Homes in Dundee.

Being built offsite by InverTay Homes' timber frame arm, Timber Engineering UK, the large 114-home development of affordable family homes is being constructed using Timber Engineering UK's advanced timber frame system, Ultrakit.

Glidevale Protect played a key role in achieving the level of energy efficiency required by InverTay Homes with its Protect TF200 Thermo external membrane. This was installed to the Ultrakit timber frames in the factory, helping to achieve a low U-value of 0.16 for the standard external wall.

Protect TF200 Thermo, which has an insulating, reflective surface and provides a strong aged thermal resistance, helped improve the U-value performance of the wall. Glidevale Protect also supplied its heavy-duty vapour impermeable underlay, Protect A1, to ensure a second line of defence for the roof structures.

Glidevale Protect's A1 roofing membrane provides a high-performance, heavy-duty type HR roofing underlay which is completely water and airtight, offers unrestricted use for wind uplift in zones 1 - 5 across the UK and Ireland without the need for additional sealing tapes, and is designed for use on all cold and warm

pitched roofs in conjunction with high- and low-level ventilation.

Both Protect A1 and Protect TF200 Thermo can be used to provide temporary protection of external walls and roofs during the build process, as well as being a secondary line of protection from water and wind-blown snow.



To find out more, please call **0161 905 5700**, email info@glidevaleprotect.com, visit glidevaleprotect.com or follow **Glidevale Protect** on LinkedIn .

CUPACLAD® 101 RANDOM PROVIDES NATURAL DEFINITION TO TWO BESPOKE COASTAL PROPERTIES



CUPA PIZARRAS' CUPACLAD® 101 RANDOM natural slate rainscreen cladding has been installed across two semi-detached new build properties, located at the heart of the Jurassic Coastline.

Chosen to blend in with the surrounding environment, the slate provides a sleek and natural finish, as well as the high level of performance necessary to cope with the coastal conditions.

Aiming to replace an earlier bungalow from 1918, AR Design Studio proposed two semi-detached properties that fan out at the rear into a Y-shape, providing two homes that deliver both privacy and space.

For a contemporary finish and to ensure the design continued to be contextually appropriate and complement neighbouring properties, natural slate was requested by the homeowner for use on the roof and for the cladding on the upper storey.

CUPACLAD® 101 RANDOM was specified by AR Design Studio as the ideal solution. Anna Rezin, Architectural Designer at AR Design Studio, said: *"This was our first experience of using CUPACLAD® and the natural slate played an important role in helping to maintain the aesthetic and rhythm of the surrounding environment."*

"We have since gone on to specify CUPACLAD® on another design too. We would highly recommend the slate cladding, as its external finish is sleek, and all the fixings are concealed."

CUPACLAD® is a fully BBA-approved, Class A1 non-combustible, back-ventilated and drained façade system, offering architects and specifiers a myriad of design options from traditional to contemporary.

For more information about CUPACLAD® please visit www.cupapizarras.com/uk/rainscreen-cladding.



IS IT TIME TO MOVE INTO GREEN ROOFS?

PART TWO by Simon Marsh, HARROWDEN TURF



Proper preparation ensures the longevity and functionality of your green roof. Clear away any debris, dirt and vegetation to ensure a clean surface for installation. Then install a waterproof membrane to protect the roof structure. Roll out sheets of EPDM or similar material, ensuring overlaps of at least six inches.



Seal the edges and seams using appropriate adhesives or tape. Add a root barrier layer over the waterproof membrane to prevent invasive root damage. Install edge restraints to keep soil and plants from sliding off. Use aluminium or plastic edging that allows drainage.

A well-designed drainage system prevents waterlogging and helps maintain plant health. Lay down a drainage layer, like plastic drainage mats or gravel, across the entire surface. Ensure there are outlets for water to escape, particularly near roof edges or existing drains.

Install a geotextile filter fabric over the drainage layer. This layer prevents soil particles from clogging the drainage system while allowing water to pass through. Trim excess fabric around edges and features.

Proper green roof substrate will support plant growth and contributes to the roof's insulation. Avoid soil, as it may be too heavy.

Spread the substrate evenly to a depth of between two and six inches, depending on the type of plants selected.

Finally, add vegetation to your green roof. For extensive roofs, select low-maintenance, drought-resistant plants like sedums, succulents or wildflowers. You can use seed, plug plants or mats. If you are seeding, spread seeds evenly across the substrate and lightly water.

If using plug plants place at regular intervals across the roof.

You can find out more in the next issue of *Roofing Times*, visit harrowdenturf.co.uk or call now on 01832 777100.

SIG ROOFING WRAPS UP SUCCESSFUL ROADSHOW

SIG ROOFING has successfully completed its 2025 roadshow, bringing together teams from across its national network of roofing branches.

Spanning four locations—Windsor, Waltham Abbey, Liverpool, and wrapping up in Edinburgh on 27 February—the events provided a valuable opportunity for collaboration, customer focus and future planning.

Each year, the SIG Roofing roadshow serves as a platform for branch managers and colleagues to share company performance, discuss key strategic priorities, enhance customer focus and strengthen connections across the business.



This year's sessions focused on the customer, advancing health and safety initiatives, enhancing employee retention and exploring the growing opportunities in solar roofing solutions.

Gavin Crane, CEO of the SIG Roofing charity partner Band of Builders (BoB), also joined the event. He expressed his thanks to SIG Roofing for its support and delivered an inspiring presentation on the work that it does to help tradespeople and their families during tough times. In a show of solidarity, attendees rallied and managed to raise an extra £4000 for the BoB charity across the four events.

Chris Lodge, Managing Director at SIG Roofing, said: ***"Each roadshow is an invaluable opportunity for leadership teams, branch managers, and sales teams to align on our customer-focused vision, share ideas on how to make it even easier for our customers to trade, and gain hands-on experience with the latest industry innovations."***

"With another successful roadshow series completed, we are excited to build on insights shared and drive excellence across our branches in 2025."

Please visit sigroofing.co.uk/find-a-branch to find your nearest SIG Roofing depot.



NFRC SUPPLIER MEMBERS

MANUFACTURERS

A. Proctor Group Ltd

www.proctorgroup.com
01250 872261
contact@proctorgroup.com

ACO Building Drainage

www.aco.co.uk/aco-building-drainage
01462 816666
abdmarketing@aco.co.uk

Actis Insulation Ltd

www.insulation-actis.com
01249 462888
solutions@insulation-actis.com

Airflow (Nicol Ventilators) Limited

www.airflow-vent.co.uk
01425 611547
sales@airflow-vent.co.uk

Alumasc Building Products Ltd

www.alumascroofing.com
01744 648 400
info@alumascroofing.com

Ampteam Ltd

www.ampteam.co.uk
01384 252777
unifold@ampteam.co.uk

Apollo Roofing Solutions

www.apolloroofingsolutions.co.uk
01827 54281
apollo-enquiries@hbfuller.com

Ash and Lacy Building Systems Ltd

www.ashandlacy.com
0121 525 1444
will.bishop@ashandlacy.com

Axter Ltd

www.axter.co.uk
01473 724056
info@axterltd.co.uk

Bauder Ltd

www.bauder.co.uk
01473 257671
technical@bauder.co.uk

BMI UK & Ireland

www.bmigroup.com/uk
01908 015760
sales.admin@bmigroup.com

Bové Draadproducten BV

bove.eu
00 31 486 411 868
sales@bove.eu

Breedon Group

www.breedongroup.com
028 92 647100
productsales@breedongroup.com

Brett Martin Daylight Systems Ltd

brettmartin.com/daylight-systems
02476 602022
daylight@brettmartin.com

CA Group Ltd

www.cagroup.co.uk
01388 834242
development@cagroup.co.uk

Carlisle Construction Materials Ltd

www.ccm-europe.com
01 623 627285
info.uk@ccm-europe.com

Cedral

www.cedral.world/en-gb
01283 501555
matthew.castles@etexgroup.com

Centaur Technologies

www.centaurroofing.co.uk
01772 453107
jl@centaurroofing.co.uk

CPI Mortars Ltd

www.cpieuromix.com
01698 464110
enquiries@cpieuromix.com

Cromar Building Products Ltd

www.cromar.uk.com
01977 663133
sales@cromar.uk.com

CUPA Pizarras S.A

www.cupapizarras.com/uk
020 3318 4455
uk@cupapizarras.com

Danosa UK Ltd

www.danosa.com
0845 074 0553
uksales@danosa.com

DEKS Industries Europe Ltd

www.deks.co.uk
01275 858866
sales@deks.co.uk

Don & Low

www.donlow.co.uk
07500 910536
mark.gray@donlow.co.uk

DuPont Tyvek

www.dupont.co.uk
08444 068 722
tyvek.construction@dupont.com

Eco Green Group

ecogreengroup.co.uk
01277 355705
info@ecogreengroup.co.uk

Edilians

www.edilians.com
07818 043808
geoffrey.doran@edilians.com

EJOT UK Ltd

www.ejot.co.uk
01977 687040
info@ejot.co.uk

Elevate UK and Ireland

www.Holcimelevate.com
01565 756185
info@ewscitd.co.uk

Euroclad Group Ltd

www.eurocladgroup.com
02922 010101
enquiries@eurocladgroup.com

Fakro GB Ltd

www.fakro.co.uk
01283 554755
sales@fakrogb.com

Filon Products Ltd

www.filon.co.uk
01543 687300
sales@filon.co.uk

Firth Steels Ltd

www.firth-steels.co.uk
01484 405940
info@firth-steels.co.uk

Flex-R Ltd

www.flex-r.co.uk
01494 448792
enq@flex-r.co.uk

FOAMGLAS®

www.foamglas.co.uk
03301 227 638
info@foamglas.co.uk

FP McCann Ltd

www.fpmccann.co.uk
01455 290780
sales@fpmccann.co.uk

G & B (North West) Ltd

www.gandbnw.co.uk
01942 518150
enquiries@gandbnw.co.uk

Garland UK

garlanduk.com
01174 401050
contact@garlanduk.com

Geco Waterproofing Systems

www.gecomembrane.com/en
00 39 045 6616246
export@gecomembrane.com

Genius Roof Solutions

geniusroofsolutions.com
01257 793113
joanna@geniusroofsolutions.com

Glidevale Protect

www.glidevaleprotect.com
0161 905 5700
info@glidevaleprotect.com

Greenpolly Ltd

greenpolly.co.uk
07859 894827
greenpolly@virginmedia.com

Guttercrest Ltd

www.guttercrest.co.uk
01691 663300
info@guttercrest.co.uk

H C Wraxall & Co Ltd

www.wraxalls.co.uk
01797 322396
office@wraxalls.co.uk

Hambleside Danelaw Ltd

www.hambleside-danelaw.co.uk
01327 701900
sales@hambleside-danelaw.co.uk

HD Sharman Ltd

www.hdsharman.co.uk
01298 812371
info@hdsharman.co.uk

Hera Waterproofing Ltd

herawaterproofing.co.uk
0121 828 8953
phil@herawaterproofing.co.uk

HS Butyl Ltd

www.hsbutyl.com
01590 684400
sales@hsbutyl.com

ICB (Waterproofing) Ltd

www.icb.uk.com
01202 785200
info@icb.uk.com

IKO PLC

www.ikogroup.co.uk
01257 255771
info.uk@iko.com

InStar UK Ltd

www.instar-uk.co.uk
01858 456949
info@instar-uk.co.uk

IPP Ltd

www.intpetro.com
01621 776252
ollie@magply.co.uk

Jordeson Timber

www.jordeson.co.uk
01904 633351
office@jordeson.co.uk

Keylite Roof Windows

www.keyliteroofwindows.com
01283 200150
info@keyliteuk.com

Kingspan Insulation Ltd

www.kingspan.com
01544 388 601
info@kingspaninsulation.co.uk

Kingspan Ltd

www.kingspan.com
01351 706101
aisling.sands@kingspan.com

Klober Ltd

www.klober.co.uk
03306 780088
info@klober.co.uk

Knauf Insulation Ltd

www.knauf.co.uk
01744 766866
marketing.uk@knaufinsulation.com

Kytun (UK) Ltd

www.kytun.com
01684 293702
info@kytun.com

Liquid Roofing Systems Ltd

www.lrs-systems.co.uk
01948 841 877
enquiries@lrs-systems.co.uk

Mannok Build Ltd

www.mannokbuild.com
08000 322 122
sales@mannokbuild.com

Mapei (UK) Ltd

www.mapei.co.uk
01902 637422
ukmarketing@mapei.co.uk

Manthorpe Building Products

www.manthorpebp.co.uk
01773 303000
mbp.care@manthorpebp.co.uk

Marley Ltd

www.marley.co.uk
01283 722588
info@marley.co.uk

Metal Solutions Ltd

www.metalsolutions.uk.com
01204 491800
sales@metalsolutions.uk.com

Nimbus Roof Technologies Ltd

nimbusrooftech.com
01799 610788
info@nimbusrooftech.com

Nordic Forest (UK) Ltd

www.nordicforest.co.uk
0208 304 1016
andy@nordicforest.co.uk

Northstone NI Ltd– Materials Division

www.northstonerooftiles-gb.com
02870 321100
enquiries@northstone-ni.com

Paslude Spit (ITW Construction Products)

www.itwcp.co.uk
0800 833 381
PO-CS@itwcp.com

Pentagon Specialist Products Ltd

www.pentagonsp.com
07876 865671
t.gardner@pentagonsp.com

Permavent Ltd

www.permavent.co.uk
01305 766703
enquiries@permavent.co.uk

Pizarras Samaca, S.A.U

www.samaca.com
00 34 988 335 555
samaca@samaca.com

Polyroof Products Ltd

www.polyroof.co.uk
01352 735135
admin@polyroof.co.uk

PREFA UK LTD

uk.prefa.com
020 7795 8124
office.uk@prefa.com

Premier Sealant Systems Ltd

www.sealprem.com
01724 864100
sales@sealprem.com

Protan (UK) Ltd

www.protan.co.uk
01925 658 001
sales@protan.co.uk

Protektor Group UK Ltd

www.protektor.co.uk
01562 515200
sales@protektor.co.uk

Proteus Waterproofing

www.proteuswaterproofing.co.uk
01268 777871
enquiries@proteuswaterproofing.co.uk

Radmat Building Products Ltd

www.radmat.com
01858 410372
techenquiries@radmat.com

Recticel Insulation UK Ltd

www.recticelinsulation.com
017820 590470
technicalservices@recticel.com

Remix Dry Mortar Ltd
www.remixdrymortar.co.uk
01329 231200
info@remixdrymortar.co.uk

Restec Roofing Ltd
www.restecroofing.co.uk
0845 4504 193
enquiries@restecroofing.co.uk

ROCKWOOL UK Ltd
www.rockwool.co.uk
01656 862621
info@rockwool.com

Rose Roofing Ltd
www.rose-roofing.co.uk
01977 516044
sales@rose-roofing.co.uk

Rubberseal Ltd
www.rubberseal.com
01290 559 333
info@rubberseal.com

S R Timber Ltd
www.sr-timber.co.uk
01623 446800
sales@sr-timber.co.uk

Shield Membranes
www.shieldmembranes.com
020 7740 9279
info@shieldmembranes.com

Siderise Insulation Limited
www.siderise.com
01656 730833
salesteam@siderise.com

Sievert UK
www.sievert.se
01536 310300
sales@rothenberger.co.uk

Sika Limited
www.gbr.sika.com
01707 394444
enquiries@uk.sika.com

Sky Garden Greenroofs Ltd
www.sky-garden.co.uk
01242 620905
enquiries@sky-garden.co.uk

Skyline Architectural Aluminium c/o Alumasc Water Management Systems
www.alumascwms.co.uk/brands/skyline
01536 383810
info@alumascwms.co.uk

Solfit Ltd
solfit.co.uk
07775 897980
sales@solfit.co.uk

Soprema UK
www.soprema.co.uk
0330 058 0668
info@soprema.co.uk

Strata Waterproofing Ltd
www.stratawaterproofing.com
028 9030 2924
info@stratawaterproofing.com

Swisspearl GB Ltd
www.swisspearl.com
01925 748 246
info@gb.swisspearl.com

Topseal Systems Ltd
www.topseal.co.uk
01423 886 495
enquiries@topseal.co.uk

Triflex (UK) Limited
www.triflex.co.uk
01785 819119
info@triflex.co.uk

Ubbink UK Ltd
www.ubbink.co.uk
01604 433000
sales@ubbink.co.uk

Unilin Insulation UK Ltd
www.unilininsulation.co.uk
00 353 46 906 6097
marketing.uk@unilin.com

VELUX
www.velux.co.uk
01592 778 225
sales@velux.co.uk

Wallbarn Ltd
www.wallbarn.com
0208 916 2222
sales@wallbarn.com

Welsh Slate Ltd
www.welshslate.com
01248 600656
enquiries@welshslate.com

Westwood Liquid Technologies Ltd
www.westwood-uk.com
0800 808 5480
info@westwood-uk.com

Wienerberger Ltd
www.wienerberger.co.uk
01427 871200
simon.garbett@wienerberger.com

W J Horrod Ltd
www.wjhorrod.co.uk
020 8539 8746
info@wjhorrod.co.uk

MERCHANTS

Belgrade Insulations Ltd
www.belgradeinsulations.com
0113 252 6524
info@belgradeinsulations.com

Chandlers Roofing Supplies
www.chandlersroofing.co.uk
01273 815100
enquiries@chandlersbs.co.uk

China Slate Ltd
www.chinaslate.co.uk
01246 865222
sales@chinaslate.co.uk

CTF Insulation Ltd
www.ctfinsulation.co.uk
0333 207 0870
office@ctfinsulation.co.uk

Euro Building Supplies
www.eurobuildingsupplies.co.uk
07813 012197
geoff@eurobuildingsupplies.co.uk

Fixing Point Ltd
www.fixingpoint.com
01242 265100
sales@fixingpoint.com

Galaxy Insulation & Drylining Ltd
www.galaxyinsulation.co.uk
0114 700 5702
garyanthony@galaxyinsulation.co.uk

Independent Roofing Supplies Ltd
www.irsl.co.uk
01273 516999
enquiries@irsl.co.uk

Harrowden Turf Ltd
www.harrowdenturf.co.uk
01832 777100
marketing@harrowdenturf.co.uk

Industrial Roofing Products Ltd
www.irpltd.co.uk
01454 299588
sales@irpltd.co.uk

Lagan Building Solutions Ltd
www.lbsproducts.com
0800 096 7612
info@LBSproducts.com

Langley Group
www.langley.co.uk
01327 704778
enquiries@langley.co.uk

Linroc Ltd
www.linroc.co.uk
01793 764000
info@linroc.co.uk

MAK Fastener Specialists (NI) Ltd
www.makfasteners.com
0161 866 8164
uksales@makfasteners.com

Meir Roofing & Insulation Supplies
www.meir-roofing.co.uk
01405 780444
sales@meir-roofing.co.uk

Mercury Building Products Ltd
mercurybuildingproducts.co.uk
01246 292816
orders@vaprfree.co.uk

Northern Slate Supplies Limited
www.northernslate.co.uk
07487 870070
john@northernslate.co.uk

Onestop Roofing Supplies Ltd
www.onestoproofingsupplies.com
0141 445 6777
natalie@weareonestop.com

PermaGroup
permagroup.co.uk
01773 608 839
sales@permagroup.co.uk

Raven Roofing and Building Supplies Ltd
ravenroofingsupplies.co.uk
0208 893 8954
info@ravenroofingsupplies.co.uk

Robert Price Roofing
www.robert-price.co.uk
01873 858585
enquiries@robert-price.co.uk

RR Stone Ltd
rrstone.co.uk
01539 822666
sales@rrstone.co.uk

Saucer Solutions Ltd
www.saucersolutions.co.uk
0141 774 0065
sales@saucersolutions.com

SIG Insulation
www.sigdistribution.co.uk
0330 123 0100
dianejeffrey@sigplc.com

SIG Roofing Head Office
www.sigroofing.co.uk
01480 466777
info@sigroofing.co.uk

Skyline Roofing Centres
www.skylineroofing.co.uk
0208 571 6128
info@skylineroofing.co.uk

Spanish Slate Quarries UK Ltd
www.ssqgroup.com
020 8961 7725
info@ssq.co.uk

Stephens Industries Ltd
www.stephens-industries.co.uk
01225 810324
info@stephens-industries.co.uk

TaperedPlus Ltd
www.taperedplus.co.uk
01642 677342
sales@taperedplus.co.uk

Tektum Supplies Ltd
tektumsupplies.co.uk
0141 739 9440
sales@tektumsupplies.co.uk

UK Roofing Supplies Ltd
www.ukroofingsupplies.co.uk
01753 539820
info@ukroofingsupplies.co.uk

Wonderbuilds Inc. Limited
www.wonderbuilds.co.uk
0208 208 2121
admin@wonderbuilds.co.uk

SERVICE PROVIDERS

AbiCAD Ltd
www.abicad.co.uk
01489 589454
admin@abicad.co.uk

Adler Fairways Insurance Brokers Ltd
www.adlerfairways.co.uk
0121 7645 500
info@adlerfairways.co.uk

Clear Insurance Management Ltd
clearinsurancemanagement.com
01622 683913
construction@thecleargroup.com

Drummond Roofing Consultancy Ltd
www.drummondroofingconsultancy.co.uk
07515 027576
gilles@drummondroofingconsultancy.co.uk

GeoShield Ltd
www.geoshield.co.uk
01133 208639
killen@geoshield.co.uk

GLA Group Ltd
gla-group.uk
07838 243312
andy@glagroup.uk

HICH Ltd
hich-ltd.co.uk
0345 257 0858
admin@hich-ltd.co.uk

James Hallam Real Estate and Construction
www.jameshallam.co.uk
01923 603 168
robert.legg@jameshallam.co.uk

Lucideon Ltd
lucideon.com
01785 331874
query@lucideon.com

McCarron Coates Ltd
www.mccarroncoates.com
0113 298 3489
luigi@mccarroncoates.com

Phillips Green & Murphy Solicitors
www.pgmsolicitors.co.uk
01792 468684
enquiries@pgmsolicitors.co.uk

PJE International
www.pjeinternational.co.uk
0116 367 6123
pete@pjeinternational.co.uk

QANW
www.qanw.co.uk
01292 268020
info@qanw.co.uk

Roof Test Consultancy Ltd
www.rooftestconsultancy.co.uk
0208 470 8118
office@rooftestconsultancy.co.uk

Surveyroof Ltd
www.surveyroof.co.uk
0345 257 7663
sales@surveyroof.co.uk

The Pallet LOOP
www.thepalletloop.com
0800 024 6130
info@thepalletloop.com

Thornton Consulting Group Ltd
www.thorntonconsulting.co.uk
01342 410508
mail@thorntonconsulting.co.uk

Join us at the biggest celebration of roofing in the UK!

UK ROOFING AWARDS 2025



9 May 2025
Intercontinental London-The O2

TICKETS ARE GOING FAST!

bit.ly/RA2025tix



Fantastic food & company



Awesome atmosphere



Celebrating the wins!



Great host



THANKS TO OUR 2025 SPONSORS

Headline sponsor



Drinks reception and after party sponsor



Published by

NFRC, 31 Worship Street, London EC2A 2DY
nfrco.co.uk | 020 7638 7663 | helpdesk@nfrco.co.uk | @TheNFRC

DISCLAIMER: The contents included in this newsletter have been submitted by NFRC Supplier Members for the benefit of NFRC Trade Members. While the content has been stylised, proof-read and checked for any obvious inaccuracies, NFRC does not necessarily endorse it. We do not advocate for any particular products, service or company. Any technical opinions expressed are those of the author and not of NFRC.

