

ROOFING TIMES

ISSUE

24

CLIMBING ATTRACTION VISITOR BUILDING WATERPROOFED

QUICK AND ROBUST EPDM SOLUTION
APPLIED TO 'BASE CAMP' ROOF



IN THIS
ISSUE

MARLEY'S
ROOFING
SITWORK GUIDE

IS IT TIME TO
MOVE INTO
GREEN ROOFS?

DO YOU
KNOW A
LOCAL HERO?

KYTUN PITCHED
ROOFING
RANGE



LOOKING AHEAD: NFRC'S RENEWED POLICY FOCUSES



As the UK's largest roofing trade association, NFRC plays a central part shaping policy alongside government and industry partners. We all know that it's a rapidly evolving construction landscape marked by many influences such as the pandemic's lasting impacts, shifting building regulations, and the rollout of the Building Safety Act (BSA).

To support our Members, NFRC has refreshed its policy objectives to tackle immediate challenges and to create sustainable, long-term opportunities for investment into the roofing and cladding sectors.

NFRC'S CORE POLICY POINTS:*

RETENTIONS

Retention clauses in construction contracts continue to pose serious financial challenges for many of our Trade Members. We are continuing to push for the removal of retention clauses from standard contract templates, including JCT and NEC forms.



LATE PAYMENTS

Similar productivity impacts are felt from late payment, which remains commonplace and continues to strain relationships across the sector. We are in the process of signing up for the new Fair Payment Code, and encourage other businesses to do the same.



PROFESSIONALISING

As building safety legislation and regulations expand, NFRC believes that the quality of workmanship is paramount and the most qualified bids should win contracts—not the cheapest. We will work with government bodies and main contractors so that professionalism is recognised and rewarded at every level.



SKILLS CRISIS

Well aware of the critical skills bottleneck, we are engaging with Skills England, the Department for Education, CITB, and the Department for Work and Pensions to ensure the nuances of our industries are considered within construction education strategies.



STIMULATING INVESTMENT

NFRC Members have a pivotal role in delivering energy efficient improvements across the UK's built environment. We are calling for greater incentives to boost investment in modernising homes and buildings, to support the cutting of emissions whilst also helping with the generation of jobs and economic growth.



SKILLED SOLAR

With the surge in solar installations, NFRC is stressing that the expertise of those installing the systems is considered and prioritised. NFRC is striving for all rooftop solar installations to be both safe and effective, securing the reputation of roofing professionals as key players in the clean energy transition.



PRODUCT STANDARDS

Uncertainty about product standards post-Brexit continues to discourage investment. NFRC supports clarity on the UK's regulatory alignment with the EU so manufacturers can plan for the long term.



SOCIAL RESPONSIBILITY

NFRC aims to support members in adopting greener approaches, improving their public image, and bringing more diverse talent into the trade. The sector can meet growing expectations from government and the public by championing inclusive recruitment strategies, waste reduction, and community engagement.



While these points cover NFRC's primary focuses, we will always remain responsive to emerging challenges.

We are always keen to hear from Members directly and encourage you to log into the NFRC website where you can visit the Members Support section and view more policy information: bit.ly/MemSupPol



*These objectives remain core to NFRC and they also tie in with broader national efforts to bolster the UK construction industry—from increasing energy efficiency and retrofitting the country's ageing building stock, to responding to ongoing skills shortages.



400+
NFRC PRESS ARTICLE
APPEARANCES
DURING 2024

POLICY WIN!

Thanks to NFRC actively working on behalf of members, the Government has begun enforcing reporting regulations on retentions.

UK ROOFING AWARDS 2025

These awards are a well-regarded event on the UK roofing calendar. It's a chance for teams to come together for a celebration amongst industry colleagues. Over 93% of 2024 guests said that they would attend again so why not join them this year? **For your tickets scan the QR code or visit bit.ly/RA2025tix**

WHEN AND WHERE?

FRIDAY 9 MAY 2025 | **INTERCONTINENTAL LONDON-THE O2**

UK ROOFING AWARDS 2025



Headline sponsor

FEEL GOOD INSIDE



Drinks reception and after party sponsor



BUILDING TRUST



LATEST NFRC TECHNICAL DOCUMENTS:

All our technical documents are available online free of charge to members at: nfrc.co.uk/knowledge

LATEST DOCUMENTS INCLUDE:

- **GN68: Common detailing topics with an RBM roof system**
- **GN64: Ventilation of integrated PV panels**
- **NFRC Technical Guidance for the construction and design of Blue Roofs**

(REMEMBER YOU NEED TO LOGIN TO VIEW THEM FREE OF CHARGE!)

DATES FOR THE DIARY

MARCH

- 4: Health, Safety and Environment Committee Meeting (Teams)
- 6: NW Regional Committee Meeting—venue TBC
- 7: Slating and Tiling committee Meeting (Teams)
- 20: **SOUTH WEST MEMBERS DAY 2025—CHEPSTOW RACECOURSE**
- 20: Midlands—Business Development Day

APRIL

- 3: NW Regional Committee Meeting (Teams)
- 8: YNE Regional Committee Meeting (SIG—Leeds Branch)
- 11: NFRC and South of England Roofing Contractors Golf Society—Tandridge Golf Club
- 30: Midlands Regional Golf Day

NATIONAL APPRENTICE WEEK (NAW) 2025

We've been immersed in #NAW2025 to promote the great career opportunities that can be found in the roofing sector. **CHECK OUT ALL THE NEW CASE STUDIES** and **VIDEOS** on our website at nfrc.co.uk/naw which showcase the success stories of roofing apprentices.

REMEMBER NFRC'S ROOFING CAREER SERVICE IS AVAILABLE TO HELP MEMBERS WITH RECRUITMENT CHALLENGES.

KEEP AN EYE OUT FOR:

THE LATEST STATE OF ROOFING INDUSTRY SURVEY—DUE OUT ANY DAY!

2025/26 MEMBERSHIP CERTIFICATES—HEADING OUT OVER THE NEXT FEW WEEKS.

UK ROOFING AWARD SHORTLIST—to be announced in March. **GOOD LUCK TO ALL THOSE WHO HAVE ENTRIES!**



RUBBERSEAL: INNOVATING ROOFING SOLUTIONS FOR MODERN CONSTRUCTION

RUBBERSEAL LTD has established itself as a leader in the flat roofing and waterproofing industry, delivering quality solutions tailored to meet the demands of commercial and industrial projects.

With a focus on innovation and reliability, the company offers a comprehensive range of systems and products designed to ensure long-lasting performance and ease of installation.

Rubberseal's stand-out products include Elevate RubberGard EPDM membranes, Liquiflex waterproofing systems, FDT Rhenofol PVC, and the innovative Rubberseal Green Roof Module System, complemented by advanced drainage solutions.

These high-performance products deliver superior durability, flexibility and seamless

finishes, making them perfect for flat roofs, modular construction and green roofing applications.

Rubberseal is committed to providing exceptional service through every stage of a project. Its comprehensive list of services includes:

- Consultation
- Roof condition and structural surveys
- System design
- National approved contractor network
- Installer training
- Project monitoring

Installer training is carried out at Rubberseal's national training facilities in Staffordshire and Ayrshire, ensuring that its network of

manufacturer-approved contractors maintains high skill levels and stays updated on new product developments.

As the exclusive UK distributor of industry-leading brands, Rubberseal supplies materials that meet rigorous standards, including BBA certification. This dedication to quality and compliance has made it a trusted partner for roofing professionals nationwide.

By combining cutting-edge products with expert support, Rubberseal continues to shape the future of roofing, delivering solutions that stand the test of time.

To learn more about how Rubberseal can help with your next roofing project, please call 01290 559333, email info@rubberseal.com or visit rubberseal.com.





IS IT TIME TO MOVE INTO GREEN ROOFS?

By Simon Marsh,
HARROWDEN TURF

Green roofs are a sustainable solution to enhance urban environments, reduce energy costs, and create habitats for wildlife. Building a small-scale green roof or helping clients add a green roof to an extensive roof can be a rewarding project, adding aesthetic appeal and environmental benefits.

The process can appear daunting but there are key steps between initial assessment and final sign-off.

Before diving into the construction process, ensure that your roof is suitable for a green roof. Consulting with a structural engineer will help to determine whether your roof can bear the additional weight of a green roof, substrate, plants and water.

A typical extensive green roof weighs between 60 – 150 kg/m² when saturated. Green roofs are commonly installed on flat or gently-sloping roofs with a pitch of up to 20 degrees. Steeper roofs may require specialised systems to hold soil in place.

A roof must maintain its waterproof capability so check or consider installing a waterproof membrane within the design plan for edges and additional features like skylights or vents.

The budget should cover materials, labour and any professional consultations.

The list of materials required is not huge: roof deck, waterproof membrane, root barrier, drainage layer, filter fabric, substrate and plants or rolls of plants.

Opt for native, drought-tolerant plant species like sedums or wildflowers to minimise maintenance and irrigation. But base these on the prevailing conditions, as those plants most at home will thrive and replace others.

You can find out more in the next issue of Roofing Times, visit harrowdenturf.co.uk or call now on 01832 777100.





KNAUF INSULATION COMPLETES £40M+ UPGRADE AT ST HELENS FACILITY

Knauf Insulation has completed a major upgrade of its glass mineral wool manufacturing plant in St Helens, which features UK-first forming technology to enable new product capability.

The upgrade has increased roll, slab and blowing wool capacity by up to 25,000 tonnes, added new product capability and further reduced the embodied carbon of products made at the site, the largest glass mineral wool plant in the UK.

The upgraded plant was officially reopened on 26 November 2024 by Knauf Group General Partner Alexander Knauf and Liverpool City Region Mayor Steve Rotheram, alongside representatives from St Helens Borough Council and senior personnel from the Knauf Insulation Group.

"Glass mineral wool insulation is central to meeting the UK's housebuilding and energy efficiency needs," said Neil Hargreaves,

Managing Director, Knauf Insulation Northern Europe. *"This upgrade means we can deliver increased volumes and enhanced products for our customers to meet rising demand for warmer, safer and sustainable homes with lower energy bills."*

The plant now features UK-first forming technology that will enable Knauf Insulation to create the next generation of low thermal conductivity, non-combustible glass mineral wool products and add thicker options to its existing ranges.

The extensive programme of work involved over 1,100 contractors over a six-month period. It included installation of a larger plant furnace which is used to melt the main raw material of glass cullet, collected via local household recycling.

For further information on Knauf Insulation's products please visit [knaufinsulation.com](https://www.knaufinsulation.com).



ELEVATE'S RUBBERGARD EPDM SCALES NEW HEIGHTS AT THE O2

A self-adhesive single-ply roofing membrane has provided a quick and robust waterproofing solution for a climbing attraction located at The O2.

'Up at The O2' offers the chance to climb the venue's world-famous domed roof. ELEVATE's RubberGard EPDM SA membrane was specified for the Base Camp building which welcomes the attraction's participants.

RubberGard EPDM SA features a factory-applied adhesive to the membrane's underside. With no need for bonding adhesives or drying time on site, it can be installed more than four times faster than a standard EPDM system and requires less labour.

Elton Day, Director at Permacote, Elevate's authorised contractor, said: *"Although we were very familiar with the standard RubberGard EPDM membrane, this was the first time we'd used the self-adhesive version."*

"The installation was really simple. Within two and a half hours, we'd applied all the membranes needed to cover the roof. If we'd used adhesives and standard installation methods, the job would have taken at least a full working day."

"The speed of RubberGard EPDM SA is amazing and I'm looking forward to using it again on other commercial projects."

Solvent-free and odourless, RubberGard EPDM SA is aimed at the commercial and industrial market and designed for time-critical flat and low-slope roof refurbishments. Further enhancing productivity, it can be installed in temperatures as low as -7 °C and requires little or no maintenance, minimising its lifecycle cost.

For further information please visit holcimelevate.com/uk-en.



IBMG SOUTH EAST RECOGNISED FOR ASTOUNDING CONTRIBUTION TO CHARITY



The Independent Builders Merchant Group, South East (IBMG SE) was presented with a bespoke commemorative trowel in recognition of its incredible £300,000 lifetime donation to Teenage Cancer Trust.

The partnership with the charity started twelve years ago with Parker Building Supplies and expanded to incorporate **CHANDLERS BUILDING SUPPLIES** and Fairalls Builders Merchants as IBMG grew.

Charity champion Stuart Chappell of Parker Building Supplies said: *"The original goal, to raise £100,000 in a decade, was achieved in just eight years. To have now reached £300,000 is amazing and the culmination of years of fundraising across the branches. We are very proud of our efforts and delighted to have helped make a big difference to a very worthwhile charity."*

Lynn Hyder of Teenage Cancer Trust said *"Every day, seven young people aged 13 - 24 hear the words 'you have cancer'. Each needs specialised nursing care and support to get them through."*

"We are the only UK charity dedicated to meeting this vital need. The support of IBMG continues to be vital in ensuring we are there for young people with cancer. We thank the entire team across Parkers, Chandlers and Fairalls for continuously going above and beyond to make this possible."

The IBMG annual golf day is a flagship charity event, while numerous other events and initiatives have all contributed to reach the £300,000 milestone.

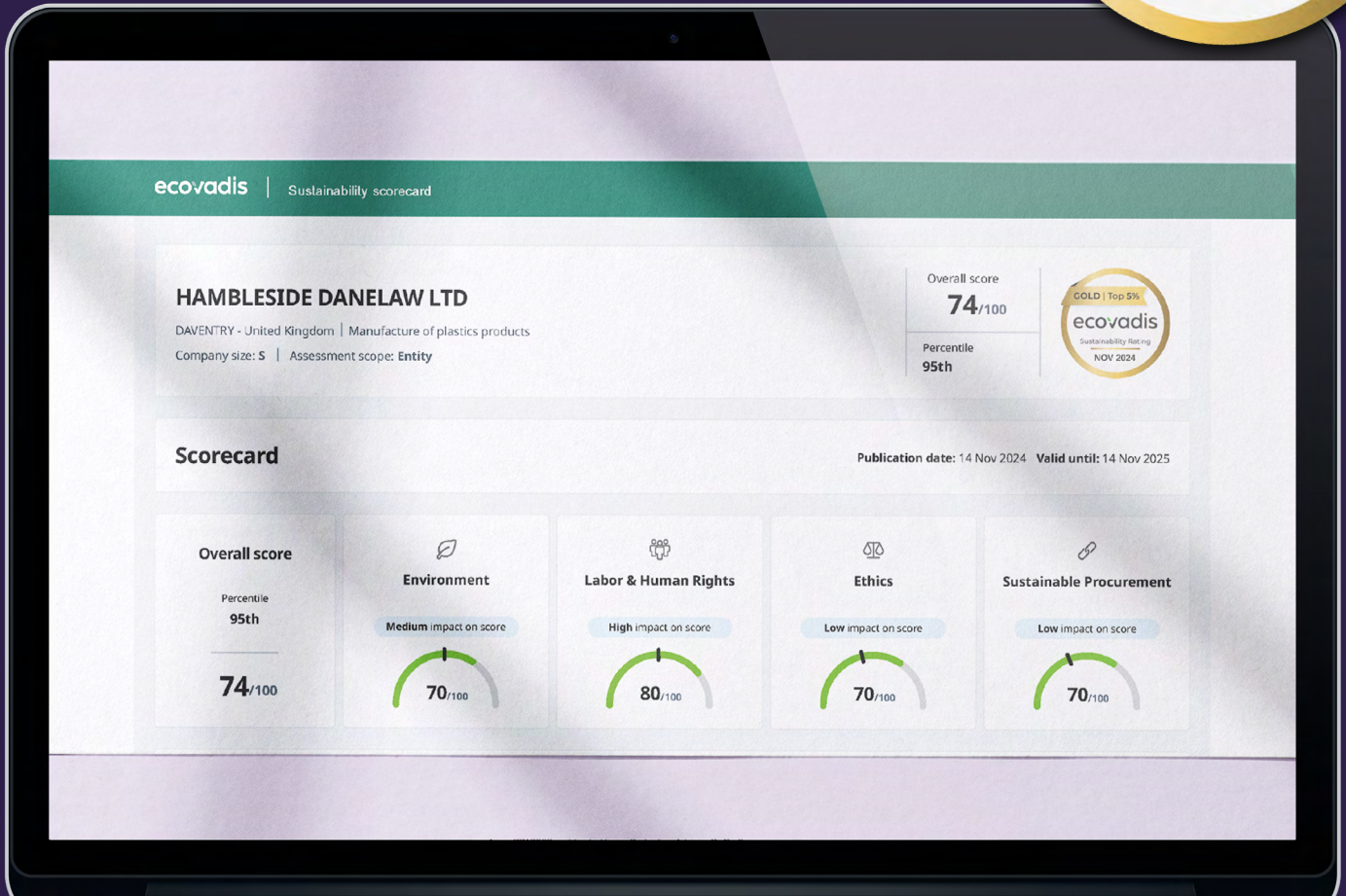
IBMG is the largest owner of independent merchants in the south of England, with 20 merchant brands and 179 branches across builders' merchants, timber, electrical, roofing, plumbing and heating.

For further information please contact independentbm.com.

*chandlerbs.co.uk



HAMBLESIDE DANELAW MAKES TOP FIVE PER CENT IN ECOVADIS ASSESSMENT



HAMBLESIDE DANELAW has completed the EcoVadis assessment process and has been awarded a gold medal, categorising them in the top five per cent of all companies in the EcoVadis database over the last twelve months.

This is a significant achievement and demonstrates Hambleside Danelaw's commitment to sustainability.

Hambleside Danelaw's Daiva Praneviciene said: *"Completing the EcoVadis assessment was a challenging task; we were able to do so thanks to Hambleside Danelaw's outstanding teamwork and commitment."*

"This impressive award was made possible by Hambleside Danelaw's dedication to creating a sustainable business."

"I want to express my appreciation to everyone at Hambleside Danelaw for investing the time and effort necessary to complete the assessment and for consistently striving for a better future for society and the environment."

Amanda Davis, National Sales Manager for Zenon Rooflights, added: *"I'm absolutely delighted that Hambleside Danelaw has been awarded Ecovadis Gold, putting us in the 95th percentile of all companies rated in the past twelve months."*

"This award represents our ongoing drive and commitment to incorporating the principles of sustainability and our corporate social responsibilities into our business management systems."

Around the world, over 130,000 companies have been rated by EcoVadis, and Hambleside Danelaw is proud to be added to that number.

For more information please visit, hambleside-danelaw.co.uk.

SKYLINE—LONDON'S SOLE CUPACLAD OUTLET

SKYLINE ROOFING CENTRES are London's sole distributor for CUPACLAD natural slate rainscreen cladding system.

CUPACLAD is a hybrid between cladding and traditional slate roofing, created to adapt natural slate to new architectural trends, which call for more sustainable construction.

This BBA-approved system uses natural slates and horizontal aluminium rails as the main components of the system. It is fairly intuitive to install, meaning it can be installed by either a cladding installer or a roofer with the necessary training or competence.

Natural slate is classified as A1 Non-Combustible, the highest level against fire according to the European standard EN 13501-1, while the aluminium rails are classified as A2, making CUPACLAD a non-combustible solution for the façade.

Slate's elegant appearance remains intact during its entire +100-year lifespan and its performance is unrivalled.

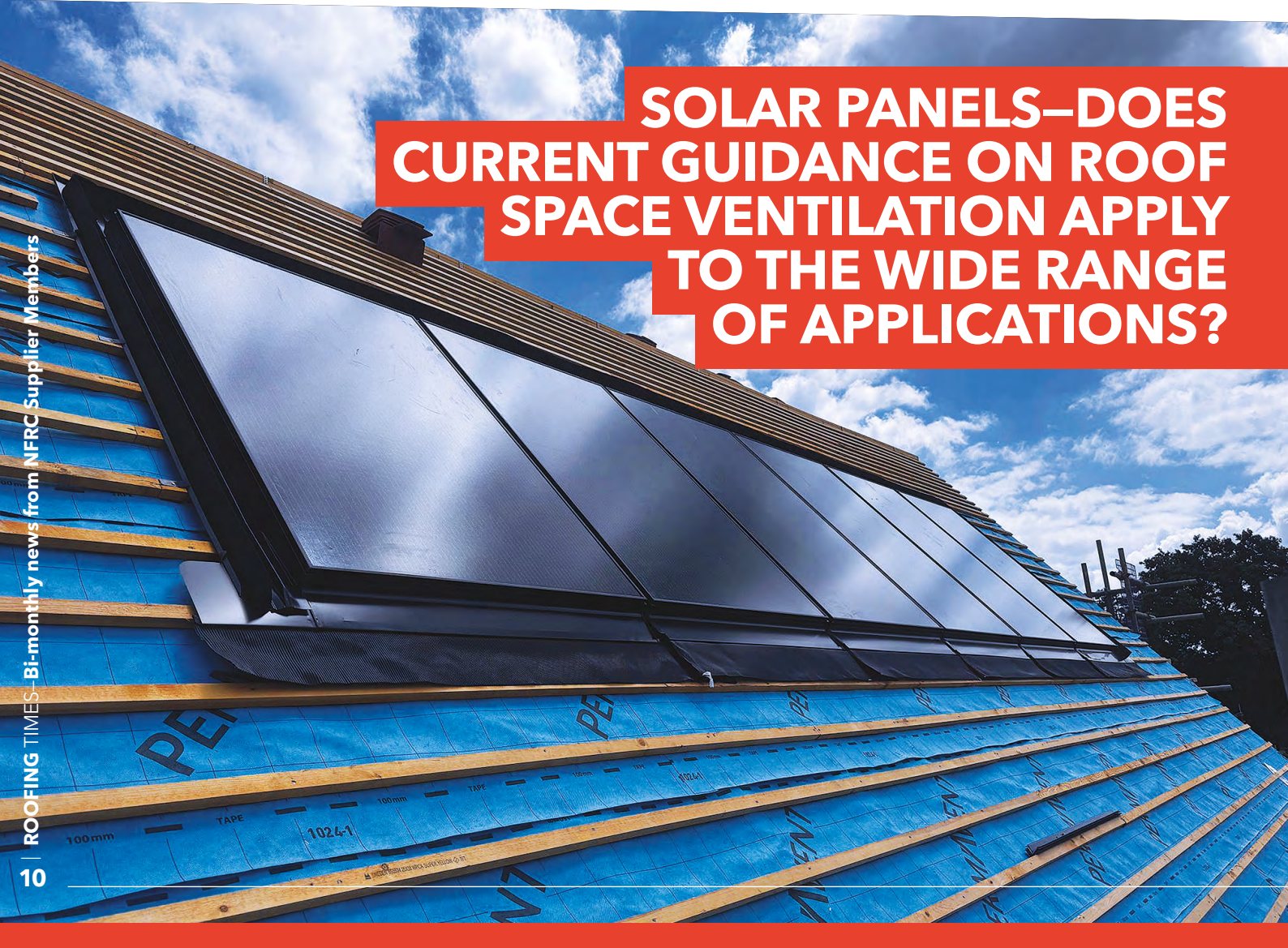
ITS KEY ADVANTAGES ARE:

- Modern design
- Sustainable
- Lightweight and versatile
- Highly durable
- Effective as ventilated cladding
- Minimal maintenance
- Complementary to external insulation systems
- Quick and easy to install

Skyline's team have been supplying to the trade and public for almost 50 years. They understand the importance of their role as an experienced, reliable supplier and, with twelve branches in and around the M25, guarantee they can get their customers what they need, at a good price, on time, every time.



SOLAR PANELS—DOES CURRENT GUIDANCE ON ROOF SPACE VENTILATION APPLY TO THE WIDE RANGE OF APPLICATIONS?





CUPACLAD

NATURAL SLATE RAISCREEN CLADDING SYSTEM



EFFICIENT AND EASY-TO-INSTALL SYSTEM



NON-COMBUSTIBLE CLASSIFIED A1



BBA CERTIFIED



MODERN FINISH



SUSTAINABLE: +100 YEAR LIFE SPAN

With Skyline's team of experts on hand to offer advice at every stage of the client's project, please visit skylineroofing.co.uk for further information.

PERMAVENT is exploring the rapid changes in pitched roof design due to the rising demand for solar applications and the need for updated roof space ventilation guidance. Modern pitched roofs are more complex, requiring good workmanship and benefiting from dry-fixed products.

However, roof space ventilation is often overlooked, where traditional cross-flow eaves ventilation, designed to prevent condensation, may be ineffective due to modern roof complexities and increased insulation.

The increase in solar panel installations can lead to roof space condensation, previously mitigated by vapour permeable underlays. As homes become more airtight and energy-efficient, condensation increases, necessitating effective removal of warm air from the attic space.

Unfortunately, ventilation regulations haven't kept pace with these changes. Traditional eaves ventilation often fails to provide consistent airflow. Air and vapour open membranes provide continuous airflow, independent of external factors, especially in complex designs.

NHBC standards following BS 5250:2021 suggest treating roof coverings as impermeable with solar panels, but NHBC states type LR vapour permeable underlays or air and vapour permeable underlays can also be used with eaves and ridge ventilation.

Type LR underlays will improve air movement and condensation control. Permavent's research supports using air and vapour permeable underlays with solar panels, and natural slates or tiles, to reduce the risk of condensation.

Issues with solar panel installations can often arise from fixing screws breaching the underlay, causing water ingress. In Europe, counter battens are used to avoid this and provide ventilation for the solar panel. **Air and vapour open underlays are the best solution for complex roofs, preventing stagnant warm air pockets. Given their proven benefits, why go backwards?**

For more information please visit permavent.co.uk.





LOCAL HERO



SIG ROOFING REPEATS SPONSORSHIP FOR NFRC LOCAL HERO AWARD



The winner of the Local Hero Award will receive two free tickets to attend this prestigious event in London, where they will be awarded on stage. Additionally, they will enjoy complimentary accommodation at a top London hotel for the night of the awards and will receive holiday vouchers valued at £2,500.

For further information please email info@sigroofing.co.uk or visit sigroofing.co.uk.



SIG ROOFING is again partnering with NFRC to sponsor the Local Roofing Hero Award for 2025. Together, they encourage roofers and roofing companies across the UK to nominate **unsung heroes who should be recognised for their charitable work, or for helping others.**

The Local Hero Award is one of the categories at the NFRC UK Roofing Awards, which is an annual event taking place on Friday, 9 May, at the InterContinental–The O2 in London. This event recognises and rewards exceptional standards of workmanship and safety within the UK roofing industry, presenting awards across various categories.

SIG Roofing has proudly supported the **'LOCAL HERO'** category for many years and is now inviting entries through its website at sigroofing.co.uk/local-hero.

It is seeking nominations from the roofing community for individuals who have made a positive impact in their local area. This can include raising funds for charity, providing free services to the community, or helping to train young people.

Nominations are free, and roofers can either self-nominate or be nominated by someone else who believes they deserve this award. Multiple entries can be submitted by an entrant. Entries are currently open, and the deadline for submissions is 21 March 2025.

VENTILATION GUIDANCE FOR IN-ROOF SOLAR APPLICATIONS—GLIDEVALE PROTECT CAN HELP



The use of solar PV is an area of growing importance as a way of meeting Building Regulations Part L requirements and ensuring energy efficiency measures are in place.

Choosing the right underlay and ventilation for a roof which has integrated in-roof solar panels is fundamental to ensure risks of condensation are minimised. This can be challenging due to the abundance of information and varying recommendations from membrane suppliers in the market.

Glidevale Protect aims to simplify this process. While technically any type of membrane can be installed—whether it's an air and vapour permeable membrane (LR) like Protect Viking Air, a vapour permeable (LR) membrane like Protect VP300 and VP400, or an impermeable underlay (HR) like Protect A1 Solar—the important factor is that the ventilation requirements can differ depending on whether it is a warm or cold roof as well as the underlay type that is ultimately chosen.

Glidevale Protect has answered some of the most commonly-asked questions to help make things simpler for the installer. The

FAQs cover everything from the different choice of pitched roofing underlays available and the associated ventilation strategies for an impermeable roof covering, in accordance with BS 5250 and the latest NHBC Standards.

For more information please visit glidevaleprotect.com/faqs/solar-ventilation-guidance-faqs.

For further guidance and support, contact the company's technical team at info@glidevaleprotect.com or call 0161 905 5700.

NFRC MEMBER IS TOP UK ENTRANT IN CUPA PIZARRAS 'BEST OF THE BEST' COMPETITION 2024



Best of THE BEST

CUPA PIZARRAS
El líder mundial en pizarra natural



In its fourth year, **CUPA PIZARRAS' 'BEST OF THE BEST'** competition continues to showcase and celebrate talent in the roofing industry. This year, **Compass Roofing** from Edinburgh topped the UK group before French roofing contractor **Rochard et Fils** was crowned ultimate global champion.

Every day, roofs are installed around the world using CUPA PIZARRAS slate, with a range of installation skills and designs playing a fundamental role in the success of each project. Through the **'Best of the Best'** competition, CUPA PIZARRAS aims to highlight the best of what can be achieved using its natural slate.

To enter, CUPA PIZARRAS asked roofers from around the world to send in application videos showcasing their best work. Entries were then sorted into regional groups with group winners selected by readers of the CUPA PIZARRAS blog. New for this year, the ultimate winner was chosen by an international panel of industry judges.

The grand prize included a visit to the CUPA PIZARRAS quarries in Spain and a trip to Madrid's Santiago Bernabéu for a football match.

Competing against Compass Roofing in the UK group were fellow NFRC members Greenhill Roofing from Leeds, as well roofing contractors from Cambridgeshire, North Yorkshire, and Galashiels, and a national facades contractor.

Following the public vote, Compass Roofing was crowned the UK group winner. Familiar to the **'Best of the Best'** competition, Compass Roofing took the overall global crown during the 2022 competition and continues to demonstrate highly intricate use of natural slate.



To find out more about the competition, and how you can enter the UK Group stage in 2025, visit cupapizarras.com/uk/news/rochard-fils-winners-best-2024 or email jhernandez@cupapizarras.com.

CUPA PIZARRAS
The world leader in natural slate.

Are you ready to win a trip to Spain?

Best of THE BEST

MARLEY SETS THE STANDARD WITH NEW ROOFING SITEWORK GUIDE

MARLEY has reaffirmed its dedication to the UK roofing industry with the launch of the latest edition of its Roofing Sitework Guide. This essential resource provides roofing professionals with best practice guidance on product installation and compliance with the latest British Standards.



The free guide is a comprehensive reference for the industry, covering all key aspects of pitched roofing, including concrete and clay tiles, dry fix systems, ventilation solutions, as well as solar PV installation. It ensures roofers have access to clear and practical advice, helping them to navigate technical challenges and industry terminology with confidence.

Comprehensive support for roofers

Beyond its Roofing Sitework Guide, Marley also continues to support professional development in the sector, addressing skills gaps with specialist training initiatives. Its solar training programme has equipped more than 500 roofers, across over 100 roofing contracting businesses, with the knowledge and skills to install Marley's SolarTile®—enabling them to capitalise on a growing business opportunity.

Marley has also expanded its online training offering, providing courses in pitched roofing, dry fix, solar PV and project estimating. For those seeking interactive learning, the team also offers Teams training sessions to enhance knowledge of roofing products and roof tile estimating.

Daniel Redfern, Head of Marketing Communications at Marley, says:

"The Roofing Sitework Guide is a benchmark resource for best practice in the industry. With over 1,200 copies requested in the first month, it highlights Marley's commitment to supporting roofers with expert technical insights and practical solutions."



DON & LOW'S CONSTRUCTION TECHNICAL SERVICES: HONEST ADVICE YOU CAN TRUST



The UK construction industry faces increasing challenges, from stricter regulations to the need for better energy efficiency. Ensuring projects are built correctly, using proper materials and responsible practices, remains a major issue.

Design, installation, or product selection mistakes often lead to costly rework and structural failures. That's where **DON & LOW's** technical expertise matters.

Beyond manufacturing quality construction membranes, Don & Low stands out with a deep understanding of the industry and diverse project requirements across the UK. Committed to construction excellence, the company has assembled skilled technical professionals to assist in all aspects of construction.

The team offers a full suite of services tailored to every customer, considering products and their role in the built environment.

All Don & Low customers, regardless of size, receive the same high level of attention.

DON & LOW'S CONSTRUCTION TECHNICAL SERVICES INCLUDE:

HELPING TO SELECT/
SPECIFY MEMBRANES

ASSISTANCE IN UNDERSTANDING
UNDERLAY DIFFERENCES AND
FULL ROOF BUILD-UPS

GUIDANCE FOR COMPLIANCE
WITH INDUSTRY REGULATIONS

BEST PRACTICES FOR PRODUCT
INSTALLATION

CAD DRAWING REVIEWS AND
BESPOKE CAD DRAWING
PRODUCTION UPON REQUEST

U-VALUE CALCULATIONS TO
SUPPORT ENERGY EFFICIENCY

Don & Low's technical team stays updated with sector developments, ensuring up-to-date advice that empowers construction professionals to make smarter decisions.

Don & Low offers these benefits as a responsible industry player at no cost. Professional technical services are just a call away.

**Contact Don & Low Construction
Technical Services at 0808 169 4444
or membranes@donlow.co.uk.**

KYTUN'S PREMIUM PITCHED ROOFING RANGE—ENGINEERED FOR PERFORMANCE

For more information, visit kytun.com/product-category/dry-fix-roofing-systems.

KYTUN is proud to present its latest Pitched Roofing range, designed for superior performance and long-lasting protection.

Manufactured in Darlington, Kytun's innovative roofing solutions are crafted from Polypropylene Copolymer (PPC)—a premium-grade material known for its exceptional durability, weather resistance, and ease of installation.

Backed by a 15-year manufacturer warranty and a seven-year colour fastness guarantee, Kytun's Pitched Roofing range ensures both reliability and aesthetic longevity.

Available across the UK and Ireland, Kytun's products offer a high-performance solution for both roofing professionals and homeowners.

Terry Goodwin, Operations Director at Kytun's Darlington manufacturing plant, shares his insights:

"At Kytun, our mission is to bring quality dry fix roofing and pitched roof ventilation plastic products to the market. Having been in the industry for over 37 years, I've witnessed a decline in product quality due to the influx of untested, imported materials. It has been frustrating to see roofers forced to compromise on quality for the sake of price—especially when roofing is one of the most crucial aspects of any build.

Discover the full Kytun Pitched Roofing range on our website and see why we are the trusted choice for superior roofing protection."



NFRC SUPPLIER MEMBERS

MANUFACTURERS

A. Proctor Group Ltd

www.proctorgroup.com
01250 872261
contact@proctorgroup.com

ACO Building Drainage

www.aco.co.uk/aco-building-drainage
01462 816666
abdmarketing@aco.co.uk

Actis Insulation Ltd

www.insulation-actis.com
01249 462888
solutions@insulation-actis.com

Airflow (Nicol Ventilators) Limited

www.airflow-vent.co.uk
01425 611547
sales@airflow-vent.co.uk

Alumasc Building Products Ltd

www.alumascroofing.com
01744 648 400
info@alumascroofing.com

Ampteam Ltd

www.ampteam.co.uk
01384 252777
unifold@ampteam.co.uk

Apollo Roofing Solutions

www.apolloroofingsolutions.co.uk
01827 54281
apollo-enquiries@hbfuller.com

Arbor Forest Products Ltd

www.arborforestproducts.co.uk
01469 532300
sales@arborforestproducts.co.uk

Ash and Lacy Building Systems Ltd

www.ashandlacy.com
0121 525 1444
will.bishop@ashandlacy.com

Axter Ltd

www.axter.co.uk
01473 724056
info@axterltd.co.uk

Bauder Ltd

www.bauder.co.uk
01473 257671
technical@bauder.co.uk

Bove Draadproducten BV

www.bove-nl.nl
00 31 486 411 868
jules@bove.eu

BMI UK & Ireland

www.bmigroup.com/uk
01908 015760
sales.admin@bmigroup.com

Bove Draadproducten BV

www.bove-nl.nl
00 31 486 411 868
jules@bove.eu

Breedon Group

www.breedongroup.com
028 92 647100
productsales@breedongroup.com

CA Group Ltd

www.cagroup.co.uk
01388 834242
development@cagroup.co.uk

Carlisle Construction Materials Ltd

www.ccm-europe.com
01 623 627285
info.uk@ccm-europe.com

Cedral

www.cedral.world/en-gb
01283 501555
matthew.castles@etexgroup.com

Centaur Technologies

www.centaurroofing.co.uk
01772 453107
j@centaurroofing.co.uk

CPI Mortars Ltd

www.cpieuromix.com
01698 464110
enquiries@cpieuromix.com

Cromar Building Products Ltd

www.cromar.uk.com
01977 663133
sales@cromar.uk.com

CUPA Pizarras S.A

www.cupapizarras.com/uk
020 3318 4455
uk@cupapizarras.com

Danosa UK Ltd

www.danosa.com
0845 074 0553
uksales@danosa.com

DEKS Industries Europe Ltd

www.deks.co.uk
01275 858866
sales@deks.co.uk

Don & Low

www.donlow.co.uk
07500 910536
mark.gray@donlow.co.uk

DuPont Tyvek

www.dupont.co.uk
08444 068 722
tyvek.construction@dupont.com

Eco Green Group

www.egr.co.uk
01277 355705
info@egr.co.uk

Edilians

www.edilians.com
07818 043808
geoffrey.doran@edilians.com

EJOT UK Ltd

www.ejot.co.uk
01977 687040
info@ejot.co.uk

Elevate UK and Ireland

www.Holcimelevate.com
01565 756185
info@ewscitd.co.uk

Euroclad Group Ltd

www.eurocladgroup.com
02922 010101
enquiries@eurocladgroup.com

Fakro GB Ltd

www.fakro.co.uk
01283 554755
sales@fakrogb.com

Filon Products Ltd

www.filon.co.uk
01543 687300
sales@filon.co.uk

Firth Steels Ltd

www.firth-steels.co.uk
01484 405940
info@firth-steels.co.uk

Flex-R Ltd

www.flex-r.co.uk
01494 448792
enq@flex-r.co.uk

FOAMGLAS®

www.foamglas.co.uk
03301 227 638
info@foamglas.co.uk

FP McCann Ltd

www.fpmccann.co.uk
01455 290780
sales@fpmccann.co.uk

G & B (North West) Ltd

www.gandbnw.co.uk
01942 518150
enquiries@gandbnw.co.uk

Geco Waterproofing Systems

www.gecomembrane.com/en
00 39 045 6616246
export@gecomembrane.com

Genius Roof Solutions

geniusroofsolutions.com
01257 793113
joanna@geniusroofsolutions.com

Guttercrest Ltd

www.guttercrest.co.uk
01691 663300
info@guttercrest.co.uk

Glidvale Protect

www.glidevaleprotect.com
0161 905 5700
info@glidvaleprotect.com

H C Wraxall & Co Ltd

www.wraxalls.co.uk
01797 322396
office@wraxalls.co.uk

Hambleside Danelaw Ltd

www.hambleside-danelaw.co.uk
01327 701900
sales@hambleside-danelaw.co.uk

HD Sharman Ltd

www.hdsharman.co.uk
01298 812371
info@hdsharman.co.uk

Hera Waterproofing Ltd

herawaterproofing.co.uk
0121 828 8953
phil@herawaterproofing.co.uk

HS Butyl Ltd

www.hsbutyl.com
01590 684400
sales@hsbutyl.com

ICB (Waterproofing) Ltd

www.icb.uk.com
01202 785200
info@icb.uk.com

IKO PLC

www.ikogroup.co.uk
01257 255771
info.uk@iko.com

InStar UK Ltd

www.instar-uk.co.uk
01858 456949
info@instar-uk.co.uk

IPP Ltd

www.intpetro.com
01621 776252
ollie@magply.co.uk

Jordeson Timber

www.jordeson.co.uk
01904 633351
office@jordeson.co.uk

Keylite Roof Windows

www.keylitteroofwindows.com
01283 200150
info@keyliteuk.com

Kingspan Insulation Ltd

www.kingspan.com
01544 388 601
info@kingspaninsulation.co.uk

Kingspan Ltd

www.kingspan.com
01351 706101
aisling.sands@kingspan.com

Klober Ltd

www.klober.co.uk
03306 780088
info@klober.co.uk

Knauf Insulation Ltd

www.knauf.co.uk
01744 766866
marketing.uk@knaufinsulation.com

Kytun (UK) Ltd

www.kytun.com
01684 293702
info@kytun.com

Liquid Roofing Systems Ltd

www.lrs-systems.co.uk
01948 841 877
enquiries@lrs-systems.co.uk

Mannok Build Ltd

www.mannokbuild.com
08000 322 122
sales@mannokbuild.com

Mapei (UK) Ltd

www.mapei.co.uk
01902 637422
ukmarketing@mapei.co.uk

Manthorpe Building Products

www.manthorpebp.co.uk
01773 303000
mbp.care@manthorpebp.co.uk

Marley Ltd

www.marley.co.uk
01283 722588
info@marley.co.uk

Metal Solutions Ltd

www.metalsolutions.uk.com
01204 491800
sales@metalsolutions.uk.com

Nordic Forest (UK) Ltd

www.nordicforest.co.uk
0208 304 1016
andy@nordicforest.co.uk

Northstone NI Ltd— Materials Division

www.northstoneroofiles-gb.com
02870 321100
enquiries@northstone-ni.com

Onduline

www.onduline.com/en
0207 727 0533
enquiries@onduline.net

Paslode Spit (ITW Construction Products)

www.itwcp.co.uk
0800 833 381
PO-CS@itwcp.com

Pentagon Specialist Products Ltd

www.pentagonsp.com
07876 865671
t.gardner@pentagonsp.com

Permavent Ltd

www.permavent.co.uk
01305 766703
enquiries@permavent.co.uk

Pizarras Samaca, S.A.U

www.samaca.com
00 34 988 335 555
samaca@samaca.com

Polyroof Products Ltd

www.polyroof.co.uk
01352 735135
admin@polyroof.co.uk

PREFA UK LTD

uk.prefa.com
020 7795 8124
office.uk@prefa.com

Premier Sealant Systems Ltd

www.sealprem.com
01724 864100
sales@sealprem.com

Protan (UK) Ltd

www.protan.co.uk
01925 658 001
sales@protan.co.uk

Protektor Group UK Ltd

www.protektor.co.uk
01562 515200
sales@protektor.co.uk

Proteus Waterproofing

www.proteuswaterproofing.co.uk
01268 777871
enquiries@proteuswaterproofing.co.uk

Radmat Building Products Ltd

www.radmat.com
01858 410372
techenquiries@radmat.com

Recticel Insulation UK Ltd

www.recticelinsulation.com
017820 590470
technicalservices@recticel.com

Remix Dry Mortar Ltd
www.remixdrymortar.co.uk
01329 231200
info@remixdrymortar.co.uk

Restec Roofing Ltd
www.restecroofing.co.uk
0845 4504 193
enquiries@restecroofing.co.uk

ROCKWOOL UK Ltd
www.rockwool.co.uk
01656 862621
info@rockwool.com

Rose Roofing Ltd
www.rose-roofing.co.uk
01977 516044
sales@rose-roofing.co.uk

Rubberseal Ltd
www.rubberseal.com
01290 559 333
info@rubberseal.com

S R Timber Ltd
www.sr-timber.co.uk
01623 446800
sales@sr-timber.co.uk

Shield Membranes
www.shieldmembranes.com
020 7740 9279
info@shieldmembranes.com

Siderise Insulation Limited
www.siderise.com
01656 730833
salesteam@siderise.com

Sievert UK
www.sievert.se
01536 310300
sales@rothenberger.co.uk

Sika Limited
www.gbr.sika.com
01707 394444
enquiries@uk.sika.com

Sky Garden Greenroofs Ltd
www.sky-garden.co.uk
01242 620905
enquiries@sky-garden.co.uk

Skyline Architectural Aluminium c/o Alumasc Water Management Systems
www.alumascwms.co.uk/brands/skyline
01536 383810
info@alumascwms.co.uk

Solfit Ltd
solfit.co.uk
07775 897980
sales@solfit.co.uk

Soprema UK
www.soprema.co.uk
0330 058 0668
info@soprema.co.uk

Strata Waterproofing Ltd
www.stratawaterproofing.com
028 9030 2924
info@stratawaterproofing.com

SuperFOIL Insulation
www.superfoil.co.uk
01636 639900
technical@boulder.co.uk

Swisspearl GB Ltd
www.swisspearl.com
01925 748 246
info@gb.swisspearl.com

The Garland Company UK Ltd
www.garlandukltd.co.uk
01174 401050
info@garlandukltd.co.uk

Timloc Building Products
timloc.co.uk
01405 765567
kharrop@timloc.co.uk

Topseal Systems Ltd
www.topseal.co.uk
01423 886 495
enquiries@topseal.co.uk

Triflex (UK) Limited
www.triflex.co.uk
01785 819119
info@triflex.co.uk

Ubbink UK Ltd
www.ubbink.co.uk
01604 433000
sales@ubbink.co.uk

Unilin Insulation UK Ltd
www.unilininsulation.co.uk
00 353 46 906 6097
marketing.uk@unilin.com

VELUX
www.velux.co.uk
01592 778 225
sales@velux.co.uk

Wallbarn Ltd
www.wallbarn.com
0208 916 2222
sales@wallbarn.com

Welsh Slate Ltd
www.welshslate.com
01248 600656
enquiries@welshslate.com

Westwood Liquid Technologies Ltd
www.westwood-uk.com
0800 808 5480
info@westwood-uk.com

Wienerberger Ltd
www.wienerberger.co.uk
01427 871200
simon.garbett@wienerberger.com

W J Horrod Ltd
www.wjhorrod.co.uk
020 8539 8746
info@wjhorrod.co.uk

MERCHANTS

Belgrade Insulations Ltd
www.belgradeinsulations.com
0113 252 6524
info@belgradeinsulations.com

Burton Roofing Merchants Ltd
www.burtonroofing.co.uk
01254 777 777
enquiries@burtonroofing.co.uk

Chandlers Roofing Supplies
www.chandlersroofing.co.uk
01273 815100
enquiries@chandlersbs.co.uk

China Slate Ltd
www.chinaslate.co.uk
01246 865222
sales@chinaslate.co.uk

CTF Insulation Ltd
www.ctfinsulation.co.uk
0333 207 0870
office@ctfinsulation.co.uk

Euro Building Supplies
www.eurobuildingsupplies.co.uk
07813 012197
geoff@eurobuildingsupplies.co.uk

Fixing Point Ltd
www.fixingpoint.com
01242 265100
sales@fixingpoint.com

Galaxy Insulation & Drylining Ltd
www.galaxyinsulation.co.uk
0114 700 5702
garyanthony@galaxyinsulation.co.uk

Independent Roofing Supplies Ltd
www.irsl.co.uk
01273 516999
enquiries@irsl.co.uk

Harrowden Turf Ltd
www.harrowdenturf.co.uk
01832 777100
marketing@harrowdenturf.co.uk

Industrial Roofing Products Ltd
www.irpltd.co.uk
01454 299588
sales@irpltd.co.uk

Lagan Building Solutions Ltd
www.lbsproducts.com
0800 096 7612
info@LBSproducts.com

Langley Group
www.langley.co.uk
01327 704778
enquiries@langley.co.uk

Linroc Ltd
www.linroc.co.uk
01793 764000
info@linroc.co.uk

MAK Fastener Specialists (NI) Ltd
www.makfasteners.com
0161 866 8164
uksales@makfasteners.com

Meir Roofing & Insulation Supplies
www.meir-roofing.co.uk
01405 780444
sales@meir-roofing.co.uk

Mercury Building Products Ltd
mercurybuildingproducts.co.uk
01246 292816
orders@vaprfree.co.uk

Northern Slate Supplies Limited
www.northernslate.co.uk
07487 870070
john@northernslate.co.uk

Onestop Roofing Supplies Ltd
www.onestoproofingsupplies.com
0141 445 6777
natalie@weareonestop.com

Raven Roofing and Building Supplies Ltd
ravenroofingsupplies.co.uk
0208 893 8954
info@ravenroofingsupplies.co.uk

Robert Price Roofing
www.robert-price.co.uk
01873 858585
enquiries@robert-price.co.uk

RR Stone Ltd
rrstone.co.uk
01539 822666
sales@rrstone.co.uk

Saucer Solutions Ltd
www.saucersolutions.co.uk
0141 774 0065
sales@saucersolutions.com

SIG Insulation
www.sigdistribution.co.uk
0330 123 0100
dianejeffrey@sigplc.com

SIG Roofing Head Office
www.sigroofing.co.uk
01480 466777
info@sigroofing.co.uk

Skyline Roofing Centres
www.skylineroofing.co.uk
0208 571 6128
info@skylineroofing.co.uk

Spanish Slate Quarries UK Ltd
www.ssqgroup.com
020 8961 7725
info@ssq.co.uk

Stephens Industries Ltd
www.stephens-industries.co.uk
01225 810324
info@stephens-industries.co.uk

TaperedPlus Ltd
www.taperedplus.co.uk
01642 677342
sales@taperedplus.co.uk

Tektum Supplies Ltd
tektumsupplies.co.uk
0141 739 9440
sales@tektumsupplies.co.uk

UK Roofing Supplies Ltd
www.ukroofingsupplies.co.uk
01753 539820
info@ukroofingsupplies.co.uk

Wonderbuilds Inc. Limited
www.wonderbuilds.co.uk
0208 208 2121
admin@wonderbuilds.co.uk

SERVICE PROVIDERS

AbiCAD Ltd
www.abicad.co.uk
01489 589454
admin@abicad.co.uk

Adler Fairways Insurance Brokers Ltd
www.adlerfairways.co.uk
07355 094296
jake.shutter@adlerfairways.co.uk

Clear MPW
www.thecleargroup.com
01622 683913
enquiries@thecleargroup.com

Drummond Roofing Consultancy Ltd
www.drummondroofingconsultancy.co.uk
07515 027576
gilles@drummondroofingconsultancy.co.uk

GLA Group Ltd
gla-group.uk
07838 243312
andy@glagroup.uk

GeoShield Ltd
www.geoshield.co.uk
01133 208639
killen@geoshield.co.uk

James Hallam Real Estate and Construction
www.jameshallam.co.uk
01923 603 168
robert.legg@jameshallam.co.uk

Lucideon Ltd
lucideon.com
01785 331874
oleksandra.rakovets@uk.lucideon.com

McCarron Coates Ltd
www.mccarroncoates.com
0113 298 3489
luigi@mccarroncoates.com

Migrate UK
www.migrate-uk.com
07717 717799
dwarren@migrate-uk.com

Phillips Green & Murphy Solicitors
www.pgmsolicitors.co.uk
01792 468684
enquiries@pgmsolicitors.co.uk

PJE International
www.pjeinternational.co.uk
0116 367 6123
pete@pjeinternational.co.uk

QANW
www.qanw.co.uk
01292 268020
info@qanw.co.uk

Roof Test Consultancy Ltd
www.rooftestconsultancy.co.uk
0208 470 8118
office@rooftestconsultancy.co.uk

Roof Tests & Surveys Ltd
www.rooftestsandsurveys.co.uk
07955 206708
info@rooftestsandsurveys.co.uk

Surveyroof Ltd
www.surveyroof.co.uk
0345 257 7663
sales@surveyroof.co.uk

The Pallet LOOP
www.thepalletloop.com
0800 024 6130
info@thepalletloop.com

Thornton Consulting Group Ltd
www.thorntonconsulting.co.uk
01342 410508
mail@thorntonconsulting.co.uk

Join us at the biggest celebration of roofing in the UK!

UK ROOFING AWARDS 2025

NFRC

9 May 2025

Intercontinental London-The O2

GET YOUR TICKETS NOW!

bit.ly/RA2025tix



Fantastic food & company



Awesome atmosphere



Celebrating the wins!



Great host



THANKS TO OUR 2025 SPONSORS

Headline sponsor



Drinks reception and after party sponsor

FEEL GOOD INSIDE



Published by

NFRC, 31 Worship Street, London EC2A 2DY
nfrc.co.uk | 020 7638 7663 | helpdesk@nfrc.co.uk | @TheNFRC

DISCLAIMER: The contents included in this newsletter have been submitted by NFRC Supplier Members for the benefit of NFRC Trade Members. While the content has been stylised, proof-read and checked for any obvious inaccuracies, NFRC does not necessarily endorse it. We do not advocate for any particular products, service or company. Any technical opinions expressed are those of the author and not of NFRC.

NFRC
LEADING ROOFING EXCELLENCE