

# ROOFING TIMES

## ROOFING SURVEY HIGHLIGHTS INDUSTRY RECOVERY

The latest NFRC State of the UK Roofing Industry survey, covering the first quarter of 2024, provides welcome positive news for the roofing sector. The results show overall roofing contractors' workloads and enquiries continuing to increase in the first three months of the year, with further rises expected over the next twelve months. However, it also reveals that some long-term challenges persist with regards to late payment, recruitment and material costs.

### Work and enquiries continue to improve

One of the key findings of the latest survey is the continued growth in the demand for roofing services. Overall, a balance of 25 per cent of respondents to the survey reported improved workloads in the first quarter marking a significant rise from the previous survey. Increased levels of enquiries for new work were reported by a similar proportion of respondents.

The RM&I sector of the industry had the greatest increases in work, with public, commercial and domestic RM&I all showing strongly positive balance figures of 34 per cent, 32 per cent and 29 per cent respectively. The Members' outlook was also generally positive for the next twelve months, with 72 per cent foreseeing an increase in work over that period.

The Yorkshire and North East region showed the strongest growth in workload, with 43 per cent overall reporting an increase. This was followed by the North West and Scotland regions with balance figures of 34 per cent and 33 per cent reporting increases respectively. However, the survey also highlighted areas of the UK with less positive market conditions. For example, among those in Wales, 50 per cent said they had experienced a decrease in workload with no respondents reporting an increase.

### Challenges remain for the new build sector

The results of this latest survey highlight the continued low levels of activity in residential new build. Among the survey respondents that operate in this sector, 29 per cent reported that their workload had reduced from the previous quarter with just 17 per cent saying it had increased. This negative balance figure of -12 per cent, compared with -10 per cent in the previous quarter, indicates a worsening picture for this area of the industry. While performing slightly better, the public non-residential new build and commercial new build sectors showed only marginal increases in workload (three per cent and two per cent on balance respectively) in the first quarter.

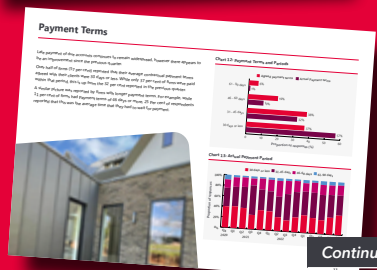
### Skills shortages persist

While employment levels remain stable, a further finding of the survey was the reported problems in recruiting the required skilled people. In fact, 53 per cent of firms experienced greater difficulty employing in the first quarter. This is a sizeable increase from the 44 per cent in the fourth quarter of 2023. Roof Slaters and Tilers were found to be the most challenging roles to fill, with 40 per cent of businesses experiencing issues.

### Late payment and rising costs

One of the biggest issues for NFRC Members remains the late payment of invoices. While improvements have been made, only 37 per cent of respondents that have 30-day payment terms with their clients were, on average, paid within that period. Similarly, of those with payment terms of 46 days or more, only 25 per cent reported this was the average time in which they received payment.

While Members indicated continued improvements in the availability of materials, many are experiencing significant material price inflation, with 58 per cent reporting increased prices in the first quarter of the year. A similar proportion (57 per cent) stated they had seen labour costs rise since the start of 2024.



Continued on page 2

## Flat out,

one of the best insulation solutions for flat roofs

### Powerdeck U

A PIR insulation board for use in warm flat roofs with bituminous torch-on felt waterproofing systems.

### Powerdeck F

Suitable for use in built-up felt, mastic asphalt and single-ply membrane waterproofing systems.

### Eurothane Eurodeck

A thermal insulation board for use in warm flat roofs under mechanically fixed single-ply membrane waterproofing systems.

FEEL GOOD INSIDE



For more information visit [recticelinsulation.co.uk](http://recticelinsulation.co.uk)

Continued



## ROOFING SURVEY HIGHLIGHTS INDUSTRY RECOVERY

Commenting on the results of the latest State of the UK Roofing Industry survey, James Talman, NFRC CEO said: "At NFRC, we are pleased to see the green shoots of recovery and growing demand in our industry. While some challenges remain, and not every sector is seeing the same boost in workload and enquiries, the continually improving market conditions in recent months shown by the survey findings is a cause for real optimism."

"These findings also highlight the priorities for any future government wishing to support the vital work of the construction industry. This includes long term commitment to the public sector pipeline, expansion of the RM&I sector in tackling energy efficiency, as well as working closely with the industry to reinvigorate the residential new build sector alongside tighter legislation on prompt payment, which is so vital to SME and sole trader businesses."

To read the full survey report visit <https://bit.ly/3x0X7sf>

## ATTRACTING AND RETAINING LABOUR UNDER THE LATEST IMMIGRATION CHANGES

Are you suffering from not having access to enough skilled labour, and could you be leaving money on the table? Over 100,000 businesses in the UK are taking on staff from overseas to fill their skills gaps, but the roofing industry seems slow to capitalise on the global availability of skilled workers.

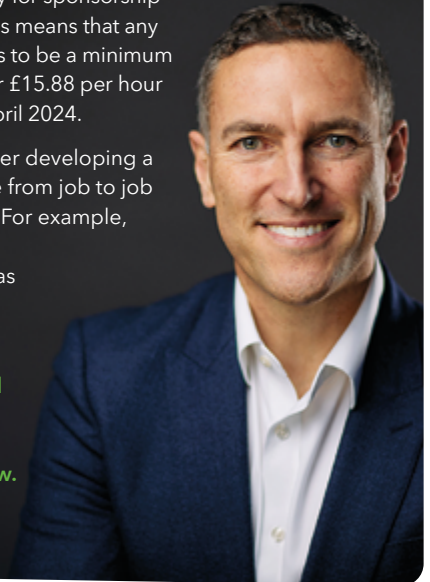
Navigating the Home Office regulations may be putting you off and, indeed, the rules recently changed in April this year. With the right guidance, accessing the talent you need is easier, quicker, and more cost-effective than you might imagine.

While the immigration system remains points-based, roofers are now on the new Immigration Salary List (ISL), the replacement for the Shortage Occupation List. The list has new SOC (job) code going rates, with every job now having a corresponding SOC code and

skill level to determine its eligibility for sponsorship and corresponding going rate. This means that any new overseas roofer's salary needs to be a minimum of £30,960 for a 37.5 hour week or £15.88 per hour (whichever is the higher) from 4 April 2024.

The recommendation is to consider developing a PAYE workforce so they can move from job to job wherever and whenever needed. For example, let's say you need approximately 50 employees, 20 from overseas as PAYE and the rest from UK talent, as subcontractors as required.

**NFRC member MIGRATE UK, led by Managing Director Jonathan Beech, is happy to offer advice and guidance on Immigration Law. Visit [migrate-uk.com](https://migrate-uk.com) or call 01235 645 800.**



## MAPEI PURTOP EASY AWARDED BBA CERTIFICATION

The **BBA Certificate 23/7057** confirms that Purtop Easy achieves a classification of **BROOF(t4) under BS EN 13501-5 : 2005** when tested directly on a non-combustible surface of 12 mm calcium silicate board, and it has a service life of at least 25 years.

During the BBA assessment process, the system was assessed as a waterproofing layer on pitched and flat roofs, with pedestrian and limited access, including green roofs and roof gardens, fulfilling all requirements.

Key factors tested included safety in case of fire, hygiene, health and the environment—including watertightness, resistance to mechanical damage, root penetration and slip resistance—and durability.

It was also assessed for design, installation, workmanship, maintenance and repair, as well as manufacture, delivery and site handling.

Highly elastic and durable, Purtop Easy is quick and easy to apply onto horizontal and vertical surfaces, with a brush, roller or trowel. The versatile membrane is resistant to standing water, root penetration, foot traffic, low and high temperatures (-40 °C to +80 °C), and UV rays.

As well as BBA certification, Purtop Easy is CE marked and an ETAG 005 certified system.

**For more information, please contact: [info@mapei.co.uk](mailto:info@mapei.co.uk) or visit [www.mapei.co.uk](http://www.mapei.co.uk).**

**Mapei has received BBA certification for its liquid waterproofing system—Purtop Easy.**

A single-component, cold liquid-applied polyurethane roof waterproofing membrane, Purtop Easy is used to protect roofs, balconies and terraces, making substrates completely waterproof even at low temperatures.





Complete  
Renewable Energy  
Systems



It's more than a roof

## MARLEY EXTENDS RENEWABLE TECHNOLOGY SYSTEM

**MARLEY** has extended its renewable technology package for roofing contractors after it launched its new solar inverter and battery storage products.

The new **ES G2 Hybrid Inverter** and **Lynx Home U Series Battery** solutions are complemented by a **Clearline EV Charging Point** to deliver contractors with a renewable technology package that offers power from the roof, through the home, to the road.

### COMBINED SOLUTION

With contractors tasked with delivering the energy efficient homes buyers want to purchase, Marley's latest product additions offer the following benefits:

- Compact and efficient inverter can supplement rooftop solar PV systems, such as Marley SolarTile®
- The low voltage lithium battery has been designed to be fully compatible with the new hybrid inverter
- The ES G2 Hybrid Inverter provides an AC output range from 3.6 to 6.0 kWh, while the Lynx Home U Series Battery offers a 5.4 to 32.4 kWh capacity range
- Flexible installation with the hybrid inverter's compact design, meaning it can be positioned in concealed areas

- Both battery and inverter solutions come with IP65 protection for safe outdoor installation
- Time-saving quick installations thanks to the pre-wired inverter

Ideal for residential applications, the battery and hybrid inverter combination can support customers who are looking for solutions via renewable technologies which can reduce their reliance on the grid.

The addition of the battery and hybrid inverters enhances Marley's SolarTile® offering which can be installed as a fully integrated roofing system from one manufacturer.

For more information, visit [marley.co.uk/renewable-solutions](http://marley.co.uk/renewable-solutions).



**JAMES HALLAM**  
**A CLOSE PROFESSIONAL PARTNERSHIP YOU CAN TRUST**

*By Andy Dischamps*

Established in 1982, **JAMES HALLAM** is a privately-owned independent specialist insurance broker with a dedicated team of experienced insurance professionals who you can depend on to protect your business.

We have 19 offices around the UK from Penzance to Inverness, employing nearly 400 staff.

We have provided tailored risk insurance programmes to a range of businesses from the real estate and **construction**<sup>1</sup> sectors, including many roofing contractors. We are committed to providing comprehensive coverage that aligns perfectly with your requirements.

But we know that no two businesses are ever quite alike. This is why we like to take the time to get to know each and every one of our clients. This allows us to build a bespoke insurance package that will meet your exact needs as a roofing contractor.

We also know how frustrating it can be not to get the support you need, when you need it. With James Hallam you will have a single point of contact managing your account and we will always be on hand to offer friendly, yet reliable, insurance advice.

We understand roofing and we can advise on best practice in risk management, which can help to bring down the cost of your cover.

In our next article we will elaborate more on our **Risk Management services**<sup>2</sup>.

For more information contact **Andy Dischamps** on **07961 166571** or [andy.dischamps@jameshallam.co.uk](mailto:andy.dischamps@jameshallam.co.uk)

James Hallam Real Estate and Construction is a trading name of James Hallam Limited who is authorised and regulated by the Financial Conduct Authority

<sup>1</sup> [jameshallam.co.uk/business/construction-and-real-estate/construction/](http://jameshallam.co.uk/business/construction-and-real-estate/construction/)

<sup>2</sup> [jameshallam.co.uk/business/riskmanagement/](http://jameshallam.co.uk/business/riskmanagement/)

# HEAVY 3 IS A PERFECT MATCH FOR GOTHIC CHURCH REFURBISHMENT



**CUPA PIZARRAS Heavy 3 roof slates** have been installed as part of a striking listed church conversion in Monifieth, Scotland. The architect specified them due to their similar characteristics and appearance to the original Welsh slate roof.

Built in 1872, the Category C Listed church in Monifieth, near Dundee, had been unused since at least 2014. With a T-shaped floor plan and Victorian Gothic architecture, the church space was bought by J&T Empire Ltd to convert into four luxury apartments. The conversion, designed by Jon Frullani Architect Ltd, sought to utilise existing features including the round bell tower, Tudor arch-styled windows and internal Gothic arches.

After conversations with the local CUPA PIZARRAS sales representative, the company's Heavy 3 slate was specified. Considered to be the ideal roofing slate for many sensitive

# RAISING THE ROOF: FIRST EVER BLUE GREEN ROOF IN DUBLIN CONSTRUCTED WITH ACO'S ROOFBLOXX SYSTEM

With new planning rules to abide by in Dublin, the developers of a commercial three-storey residential apartment building had to demonstrate that their scheme would have a blue green roof to obtain planning permission.

ACO worked together with the contractor to design and specify an innovative blue green system that would manage stormwater runoff, improve resilience, and be the first of its kind in the city.

A key part of the consultation was ACO's assessment of the hydraulic requirements, which was based on one in 100-year time series rainfall, as well as accounting for a 40 per cent uplift in climate change. Following the assessment, ACO specified its **ROOFBLOXX** attenuation system to cover a

catchment area of 131.8 m<sup>2</sup>, installed on an inverted blue roof.

Introducing the ACO solution to an inverted roof separated the competing drainage requirements. By engineering an elevated shallow structural attenuation system that operates independently of the flat roof drainage system, it allowed the roof to be engineered to known standards and best practice, without compromising the ability of the roof to drain quickly in extreme circumstances.

A spokesman for the contractors who led the project said: "When we were approached about this job, we knew we'd need guidance from blue roof specialists. We turned to ACO because we know they not only have innovative products like the RoofBloxx system, but they have the knowledge, experience and assisting tools to make sure that the job runs smoothly.



"With ACO's support, the project was swiftly granted planning approval, and we and the developers have peace of mind that the roof is protected for years to come."

For further information please visit [www.aco.co.uk/roofbloxx](http://www.aco.co.uk/roofbloxx).





heritage projects in Scotland due to its resemblance to traditional Scottish Ballachulish slate, the Heavy 3 natural slate is also UV-, chemical- and pollutant-resistant and comes with a 100-year warranty.

The contractor on the project endorsed the selection, saying:

“We always recommend CUPA PIZARRAS slate when a product selection hasn't yet been made, so I was pleased that the architect had already specified CUPA PIZARRAS slate in this case. Easy to cut and install, it is also consistent in terms of thickness and shape. In my opinion, it's one of the leading roof slate brands.”

For more information on CUPA PIZARRAS roof slates, please visit [www.cupapizarras.com/uk](http://www.cupapizarras.com/uk).



## PROCTOR AIR® PROVIDES PEACE OF MIND FOR APARTMENT RESIDENTS DURING ESSENTIAL REROOFING WORKS

Located close to the town of Ashington in Northumberland, Hatchmeadow apartments and bungalows is an age-exclusive development operated by the housing association, Bernicia.

The T-shaped apartment building features a 2500 m<sup>2</sup> pitched roof, including several gables and valleys. Unfortunately, problems with the existing roof specification were causing some residents to experience leaks during periods of poor weather.

To address the issues once and for all, Bernicia tasked Wensley Roofing—part of the Northern Bear family of companies—with stripping back the existing roof and installing a new system.

The roof included an area of solar PV panels, so the new roofing system had to be capable of providing weathertightness and condensation control in several different circumstances across the single building—all while residents remained in occupancy during the work.

James Roy, Senior Quantity Surveyor at Wensley Roofing, describes the replacement roof system as a “*belt and braces*” approach.

*He explained: “The specification used PROCTOR AIR over the rafters, followed by counter battens, tile battens, and a new pantile finish. We even used butyl tape over the nail holes to provide a complete seal against rainwater.”*

At the time of writing, Wensley Roofing is about halfway through the reroofing work.

*James continued: “Some of the residents were having to use buckets to catch leaking water. Since installing this new system the leaks have now stopped, and there has been some bad weather.”*

For more information, please visit [proctorgroup.com/products/proctor-air](http://proctorgroup.com/products/proctor-air).





# GLIDEVALE PROTECT COVERS ALL SOLAR ROOFING NEEDS WITH 15-YEAR PRODUCT WARRANTY

GLIDEVALE PROTECT has unveiled a new 15-year product warranty on its pitched roofing underlays and ventilation products when used as a complete system where integrated in-roof photovoltaic (PV) panels are installed, offering quality assurance across its range.

The warranty extends to Glidevale Protect's full range of vapour permeable and impermeable pitched roof underlays plus its high and low level ventilation products. Under the warranty, Glidevale Protect will replace any products that are verified to be defective on a like-for-like or nearest equivalent basis for up to a period of 15 years.

1 Impermeable roofing underlays  
2 Permeable roofing underlays  
3 High level ventilation  
4 Low level ventilation

**glideVALE protect SOLAR**

Other terms and conditions apply; for more information, visit [www.glidevaleprotect.com/warranty](http://www.glidevaleprotect.com/warranty).



## HARROWDEN HELPS RECREATE AN IRON AGE SEDUM ROUNDHOUSE

Over the last 12 months HARROWDEN has been working with Stanwick Lakes and the Rockingham Forest Trust to recreate an Iron Age roundhouse complete with sedum roof.

Close to the site of the Iron Age settlement uncovered in the 1980s, the plan is to transform this area into a typical prehistoric farm settlement forming the focal point for "Living History" experiences.

The project focuses on the settlement area and the visitor experience - through educational school visits or recreational visits with family and friends. The project develops the "Iron Age story" of Stanwick Lakes and will build greater understanding of ancient settlers, how they lived and the materials they used.

Harrowden has helped to build a second, larger, roundhouse. This has been designed with a ditch, bund, hurdle fencing and a small





MATT NEARY from  
Glidevale Protect  
commented:



Roof designs can be complex, for example with the increasing popularity of integrated in-roof solar PV panels.

It's imperative that the correct underlay and ventilation strategy is implemented, to minimise the risk of harmful condensation forming and therefore the potential of rotting roof timbers. Our technical team is able to offer guidance on a full roof ventilation strategy to suit the specific parameters of each project, drawing on our range of high quality products, which are made here in the UK.

Our new 15-year product warranty provides assurance that our roofing materials are designed to last the lifetime of the roof, provided they are correctly installed in accordance with our fixing instructions. ”

garden. The aim is to provide a glimpse into the past of Stanwick Lakes and to create a focus for community heritage activities.

The new roundhouse has a sedum roof constructed from Harrowden's sedum mats, which use 17 sedum species grown and nurtured in Harrowden's nursery for up to twelve months. Each plant species is chosen for its disease resistance, drought tolerance, and long flowering period.

Rich in pollen and nectar, they are a great food source for bees, butterflies, moths and hoverflies. They can be a low-maintenance alternative to a traditional lawn, they are drought-tolerant and they are happy on the ground or on green roofs. They are tolerant of most conditions aside from being wet all the time.

For more information visit  
[harrowdenturf.co.uk](http://harrowdenturf.co.uk).



## EJOT COLORFAST DELIVERS FOR DPD'S NEW BREEAM 'EXCELLENT' PARCEL HUB



**EJOT Colorfast colour-matched fasteners have been used in the creation of the building envelope for a new 60,000 ft<sup>2</sup> parcel hub near Wolverhampton, designed to be amongst the UK's most sustainable buildings of its kind.**

The state-of-the-art facility will be a regional base for leading European parcel delivery company DPD, which has agreed a 25-year lease.



Designed by UMC Architects and constructed by main contractor A&H Construction, the new BREEAM 'Excellent' superhub sets the standard for industrial and commercial buildings in the net zero carbon economy. The building features two distinctive pods—one being a single storey unit housing staff facilities, and the other a two-storey office block.

The building envelope is designed with carbon savings in mind by performing to an extremely well-insulated standard, and it is here where 93,000 EJOT Colorfast over-moulded fasteners made an important contribution. The architect specified the TATA Steel Trisobuild built-up system for the roof and walls, with additional walls using Trimpanel Micro Rib, to meet the envelope's target performance goals.

Using a mix of EJOT Colorfast CF15 and CF19 JT3-3-5.5 X 25 self-drilling fasteners in conjunction with the TATA Steel system meant a high level of thermal insulation could be assured.

And it was a fastening specification for longevity too, with the stainless steel Colorfast fasteners being highly resistant to corrosion and qualifying for a 25-year TATA Platinum Plus Warranty which applied to this project.





# GREEN LOOP PALLETS ENTER BUILDING MATERIALS SUPPLY CHAIN



This month sees a step change in the way building materials are delivered in the UK. Reusable pallets from **THE PALLET LOOP** are now entering the construction sector, en masse, loaded with products from British Gypsum.

After discussing for some time the benefits that a circular economy pallet reuse scheme could bring to the industry, The Pallet LOOP is now delivering what it promised. Over the next year, more than a million green LOOP pallets will enter the building materials supply chain, and The Pallet LOOP says this is just the start of a wider shift.

Deb Dillon Foster, Head of Customer Engagement at The Pallet LOOP, said: *"We're grateful to British Gypsum for the sustainable leadership they've shown in signing up for our pallet reuse scheme."*

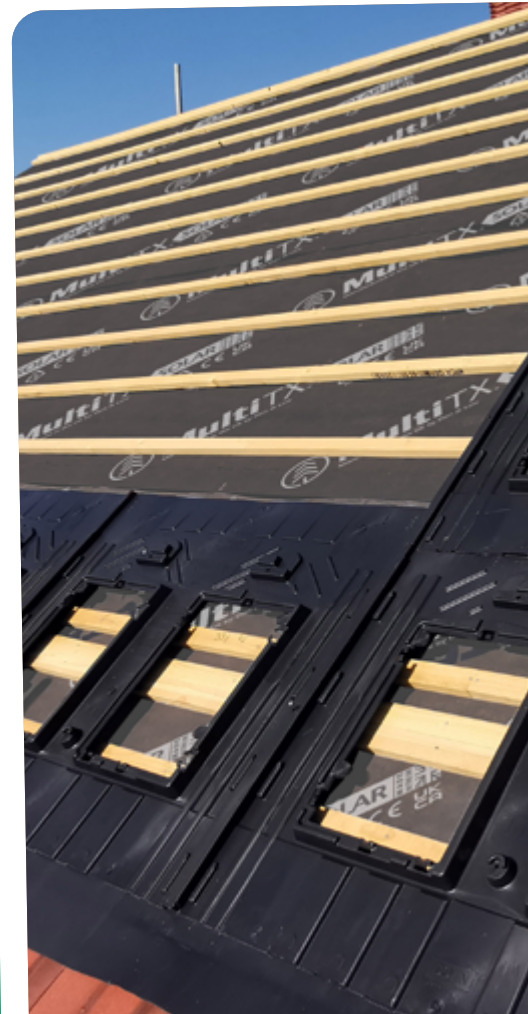
*"We've been saying for ages that change is coming in relation to pallets—and now it's really happening."*

*Every year, UK construction uses 20 million pallets to move building materials, the vast majority of which are used just once, then skipped or scrapped. That's wrong on many levels and from this point on, that changes.*

*"We're already talking to other material manufacturers that are keen to get in the LOOP and use our returnable pallets to transport their products. The benefits are undeniable. With huge timber, carbon, and waste savings on offer, plus a pay-back of up to £4 for every green pallet we collect, pallets are no longer about just delivering products."*

*"The Pallet LOOP is proof that, with the right approach, pallets can also deliver huge sustainability and financial benefits across the whole industry."*

For more information about moving materials using The Pallet LOOP's circular economy pallets, please contact: [sales@thepalletloop.com](mailto:sales@thepalletloop.com).







# ELEVATING EXPERTISE: INVESTING IN COMPREHENSIVE TRAINING FOR SEAMLESS ROOFING INSTALLATIONS

The roofing industry faces a transformative shift as the 31 December 2024 deadline for the expiration of CSCS (Construction Skills Certification Scheme) cards approaches. From 2025 onwards, all roofing installers working on UK construction sites must possess a minimum Level Two NVQ qualification.

As a company that is committed to roofing excellence, Sika Roofing looks forward to the change leading to a new era of elevated standards and encouraging a comprehensive level of knowledge and practical skills necessary to execute installations to industry best practices.

While improving safety and quality, this change may exacerbate existing skills shortages in the construction sector. Proactive measures are needed to address potential bottlenecks and ensure a smooth industry transition.

Sika's Roofing Division is committed to supporting the industry through this change with comprehensive training programmes across four key roofing technologies. The Sika Roofing one-, two- and four-day installer training courses equip installers with the ability to prove their competence and skill base in

single ply membranes, liquid waterproofing, and reinforced bituminous membranes.

Conducted at Sika's real-world simulation Training Centres, the courses allow participants to practise techniques before attempting live projects.

Additionally, Sika offers a comprehensive eLearning platform, which allows roofing professionals to expand their skills and keep up-to-date on the very latest developments, regulatory requirements and innovations. By fostering continuous learning and expertise, Sika aims to mitigate skilled personnel shortages, ensuring the roofing industry remains well-equipped to meet future demands with flexibility and adaptability.

For more information, call 01707 394444 or visit [www.sika.co.uk/roofing](http://www.sika.co.uk/roofing)



# DON & LOW'S NEWEST MEMBRANE TARGETS INTEGRATED SOLAR ROOFS

With over two centuries of commitment to innovation and excellence, **DON & LOW** consistently aligns with the regulations governing efficiency and sustainability, pushing the boundaries of what's possible in the construction industry.

As the UK goes green and a new era of sustainable construction practices arises, **MultiTX® Solar**, Don & Low's newest roofing underlay, is here to simplify things and unlock the power of solar energy.

Regulatory bodies have introduced stringent standards in recent years regarding solar panel integration, to ensure their safety and efficiency. From Part L regulations and The Future Homes Standard to the NHBC standards, builders and developers face many requirements to optimise energy performance and minimise environmental impact.

Central to these regulations is proper ventilation within integrated solar roofs—a crucial element in preventing moisture build-up and ensuring long-term durability.

Different types of underlay pose varying risks of condensation, with low resistance (LR) underlay potentially increasing condensation risk within the batten space. On the other hand, when applied, high vapour resistance (HR) underlay negates the need for a ventilated counter-batten space, provided adequate eaves and ridge ventilation are maintained, as per BS 5250 regulations.

The launch of Don & Low's MultiTX® Solar membrane means that builders now have a solution engineered to meet the demands of integrated solar roofs. By providing a high vapour resistance air and liquid barrier, MultiTX® Solar offers a modern, cost-effective alternative to traditional roofing underlays, all while ensuring compliance with the latest regulations.

For more information about **MultiTX® Solar** and Don & Low's building envelope, call 0808 169 4444 or visit [www.donlow.co.uk](http://www.donlow.co.uk).

# SWISSPEARL WESTERLAND SLATE AND RIDGES

If you are looking for a natural look slate that is both economical and maintenance free, then look no further.

**SWISSPEARL** Westerland slate has an appearance very close to that of natural slate. Its attractive textured surface and natural dressed edges make it an ideal solution for situations where a traditional appearance is important. Like all fibre cement slates, Swisspearl Westerland is lightweight, pre-holed and easy to cut with hand tools, meaning nuisance dust is eliminated.

Furthermore, as with other fibre cement slates, Swisspearl Westerland does not need to be graded and sorted like natural slate, making it more cost-effective, easier and quicker to install.

Swisspearl Westerland slates are manufactured using Portland cement, superior blended synthetic and cellulose fibres and hard-wearing surface coatings. Westerland slates are pigmented during production and are fully compressed.

Swisspearl fibre-cement slates are high-quality fibre cement products for new and refurbishment projects on residential, commercial or publicly-owned buildings. They are also virtually maintenance-free, BBA-accredited and come with a 30-year warranty.

Complete the look with Swisspearl fibre cement, colour matched ridges.

Swisspearl Textured  
Dressed Graphite

To find out more or to order your free sample visit [www.swisspearl.com/en-uk](http://www.swisspearl.com/en-uk) or email [sales@gb.swisspearl.com](mailto:sales@gb.swisspearl.com)



## MAXIMISE THE BENEFITS OF YOUR MEMBERSHIP STATUS ON INSURANCE REVIEWS

As a NFRC Service Provider member, **McCARRON COATES** has niche experience in roofing, cladding and access sectors, and encourages you to make the most of NFRC membership when conducting an insurance review.

The key when considering an annual insurance review is to agree a strategy on market involvement and understand how to achieve the best results utilising the value of your NFRC membership.

Director Luigi Maggio said: *"Undoubtedly members will be contacted many times throughout the year regarding an insurance review, but it's important to understand how you achieve the best results and who to engage with."*

*"Insurers are inundated with enquiries that lack real technical information, business rationale and content. They require a level*

*of commitment from the submitting broker; without any of this, the result is either a simple 'no quote' due to resource, or the terms provided are not the best achievable."*

He went on to explain that their role as a broker is to obtain the best proposal for members by advising what key detail is required and why insurers request levels of commitment to achieve this.

He continued: *"We often find that no reference is made to the NFRC audit process, reduced accidents statistics, and members' expertise in specific sectors, which gives insurers ultimate comfort that their risk represents reduced exposure."*

*"Insurers can be creative in what package they offer and benefits beyond the premium but it's important the members are represented in the most positive manner as NFRC is seen as sector leader."*



To discuss how to take advantage of your NFRC status, please contact **Luigi Maggio** on **07970 910961** or email [luigi@mccarroncoates.com](mailto:luigi@mccarroncoates.com)



Swisspearl Blue  
Black Ridge



# AWMS: ESSENTIAL NON-COMBUSTIBLE DRAINAGE SOLUTIONS FOR HIGH-RISE CONSTRUCTION

**ALUMASC WATER MANAGEMENT SOLUTIONS (AWMS)** is the UK's leading manufacturer of integrated non-combustible rainwater and drainage systems encompassing the entire building envelope.

Its drainage solutions assist with compliance to the **Building Safety Act 2022**, specifically **BS EN8579:2020—A Guide to the design of Balconies and Terraces**, which emphasises the importance of fire safety in the drainage design of balconies and terraces.

The AWMS system incorporates **Harmer Aluminium Roof Outlets**<sup>1</sup> featuring new extended spigots connecting directly to a welded spigot on Alumasc's Aluminium Downpipes, eliminating any potential incompatibility.

Both products have a well-established track record of use in the high-rise building sector. The Harmer Aluminium Roof Outlet range is suitable for all types of flat roof application, including balconies and terraces. **Alumasc Aluminium Downpipes**<sup>2</sup> have a history of specification on many high-rise projects, and are available in a range of popular profiles.

Harmer Roof Outlets and Aluminium Downpipes are both BBA-approved powder coated, making them A2-s1, d0 fire-rated, ensuring conformity to the new regulations in most applications.

To complete the AWMS fire-resistant offer, the **Harmer Modulock Pedestal System**<sup>3</sup> offers a range of non-combustible raised pedestals designed to create level flooring in any building application where sloped, stepped, or irregular surfaces present a challenge. They are manufactured from mild steel with a highly durable zinc nickel, corrosion-resistant finish, making them A1 fire-rated.

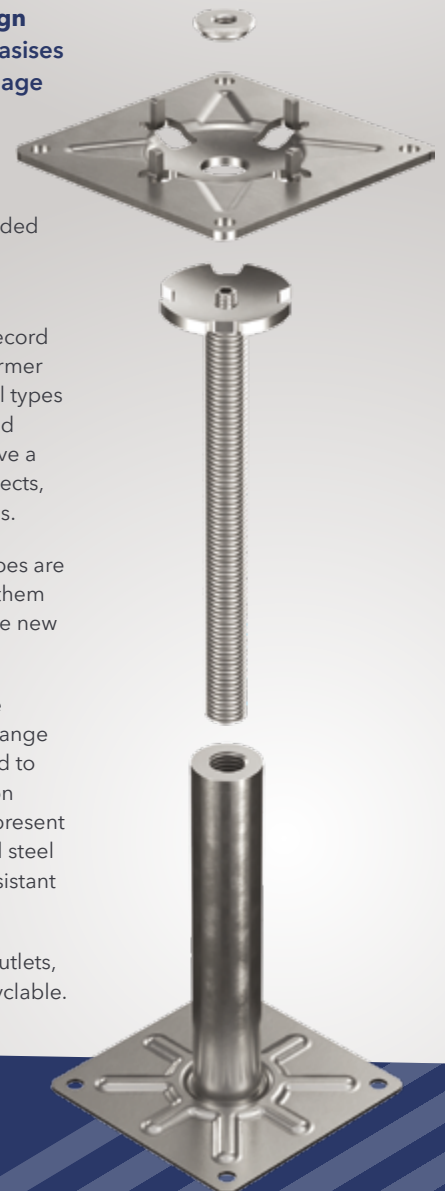
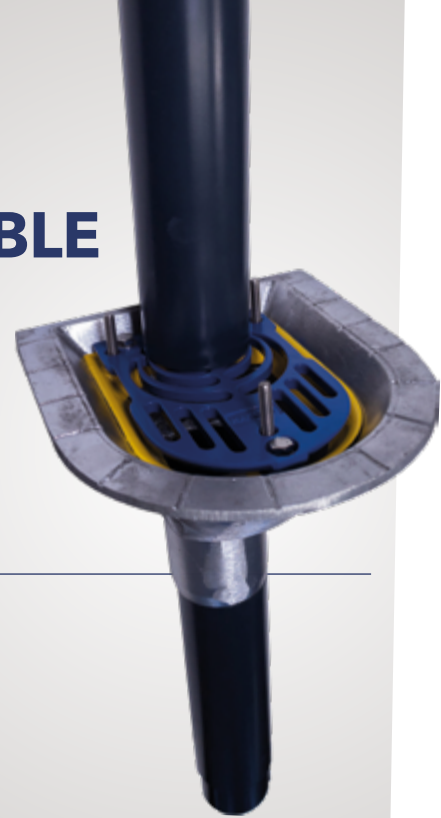
This complete package of non-combustible outlets, downpipes and pedestals is 100 per cent recyclable.

Call **01536 383810** or  
download the product brochure at:  
[issuu.com/alumasc-wms/docs/  
harmer\\_roof\\_drainage](https://issuu.com/alumasc-wms/docs/harmer_roof_drainage).

<sup>1</sup> [www.alumascwms.co.uk/media/6782/harmer-aluminium-roof-extended-spigot-range.pdf](http://www.alumascwms.co.uk/media/6782/harmer-aluminium-roof-extended-spigot-range.pdf)

<sup>2</sup> [www.alumascwms.co.uk/products/rainwater/aluminium-rainwater/](http://www.alumascwms.co.uk/products/rainwater/aluminium-rainwater/)

<sup>3</sup> [www.alumascwms.co.uk/products/harmer/modulock/modulock-non-combustible-pedestal-supports/](http://www.alumascwms.co.uk/products/harmer/modulock/modulock-non-combustible-pedestal-supports/)





# BUILDING THE MARKET FOR IN-ROOF SOLAR



*"In-roof solar may still be a relatively new technology, but the market is building quickly. Suppliers such as Wienerberger are helping to upskill contractors through specialist training, providing essential skills and knowledge for market."*

*Simon Garbett, Category Manager for Roofing Systems, Wienerberger.*



While **WIENERBERGER** only introduced its Sandtoft in-roof solar panels a year ago, demand for the technology has been increasing ever since. In-roof panels mimic traditional tiled roofs and can be installed alongside clay and concrete tiles. Each panel weighs just 8.95 kg and can be fixed directly to roof battens to cut installation costs. The panels are part of a full roofing package that includes inverters and batteries.

## UPSKILLING ROOFERS FOR THE RENEWABLE ENERGY REVOLUTION

The Sandtoft advanced in-roof solar training covers everything a roofer needs to know to become a master of in-roof solar. Such is the appeal and significance of in-roof solar, attendees of the advanced training course can take the Electrotechnical Certification Scheme Test, a first in the UK.

Delivered by Wienerberger and energy training provider GTEC, the advanced solar training includes hands-on training and classroom learning, covering key topics like navigating UK building regulations, understanding local grid requirements, and implementing the latest solar innovations.

By participating, roofers enhance their technical skills and business capabilities while gaining a thorough understanding of the regulatory landscape for UK solar installations. Upon completion of the course, attendees can apply to join the Sandtoft Accredited Installer Scheme.

More information on this and other training options offered by Wienerberger can be found below.

Learn more here:  
[www.wienerberger.co.uk/  
pv-training.html](http://www.wienerberger.co.uk/pv-training.html)  
or  
**SCAN THE QR CODE**



For more information on Proteus products please visit [www.proteuswaterproofing.co.uk](http://www.proteuswaterproofing.co.uk)

**BEFORE**







# LIGHT INSPIRED DESIGN

Follow First Glass Roofs on  @firstglassroofsltd or email [enquiries@firstglassroofs.co.uk](mailto:enquiries@firstglassroofs.co.uk)

**FIRST GLASS ROOFS** is a manufacturing company based on the Hampshire/Surrey borders, established in 2014 with the aim of providing a range of virtually frameless products to the roofing and construction trade.

Using the very latest in structural glass technologies, First Glass Roofs designs and manufactures all its own products and most components which gives full control of quality in house and the freedom to customise its product range.

It manufactures factory-finished rooflights which are quick and easy to fit, with an unparalleled level of quality.

- The glass in the products ranges from 0 to u-value
- Its solar glass rooflights can generate electricity to make your customer's home or business much more energy-efficient, while still allowing light in
- First Glass Roofs offers heated glass that works like a radiator, generating warmth in areas that are hard to heat

- Solar glass and heat soaked toughened glass are fitted as standard in its rooflights
- All frames in the product range are thermally broken aluminium with polyamide for thermal efficiency

With a strong focus on product development, First Glass Roofs is always at the design table and will be releasing many new systems over the coming five years.

## PROTEUS WATERPROOFING SAVES THE SHOW AT MARLOWE THEATRE



The Marlowe Theatre, in Canterbury, Kent, a vibrant landmark blending modern design with rich theatrical history, faced a potential downpour—a leaking roof threatening upcoming performances.

Thankfully, the show went on, thanks to the swift intervention and expertise of **PROTEUS WATERPROOFING**.

A thorough roof survey by Proteus identified areas needing complete repair and other parts that would be more suitable for an advanced overlay solution using the company's Proteus Pro-System®. A detailed report ensured the client understood the issues and received the most efficient and durable solutions.

Safety was paramount throughout the project. Scaffolding was erected outside theatre hours, minimising disruption to patrons and performers. A complex scaffolding system with hoists for material handling ensured the safety of everyone involved.

Proteus offered bespoke solutions for different areas. Existing single-ply roof sections received



a Proteus Pro-System® overlay, while more severely damaged areas required a new tapered insulation package.

Another crucial factor was the need to minimise disruption to ongoing performances. Proteus's cold-applied Proteus Pro-System® eliminated the risk of fire, allowing work to continue during theatre operations.

The project went beyond roof repairs. A damaged glass overhang was replaced with a waterproofed design, and a heavily trafficked front terrace received a fire-safe, slip-resistant and waterproof Cold Melt® system.

Regular communication between the theatre, Proteus, and the contractors, ensured a smooth project throughout. And as an added bonus - the contractors went above and beyond, reinstalling lightning conductor systems for added safety.

**AFTER**





# WELSH SLATE IS THE "PERFECT APPLICATION"

UK ROOFING AWARDS 2024

WINNER

NFRFC

A project that exemplifies a "perfect application of Welsh Slate", completed by Wates on a landmark site in London's iconic West End, has won a prestigious NFRFC Roofing Award.

The triangular site at Piccadilly Circus was a mixture of 13 buildings of different ages, architectural styles, listings, ownerships and uses. But they are now brought together under a new Welsh Slate roof that reflects the complex labyrinth below.

Fletcher Priest architects' 144,000 ft<sup>2</sup> mixed-use scheme for Landsec's Lucent, the new name for the city block that accommodates the Piccadilly Circus Lights, has been radical.

A mix of Welsh Slate's County-grade 500 mm x 300 mm and 500 mm x 250 mm Cwt-y-Bugail Dark Blue-Grey slates were laid over 1,750 m<sup>2</sup> on pitches ranging from 20° to 80° by EJ Roberts Roofing Contractors.

Project architect Joe Sweeney said: "The roof is a very important part of the project

as it unifies the 13 different buildings into one consolidated project.

"It was important to us to use local and traditional products and their sustainability was equally as important—Welsh Slate met all those requirements."

The combination of technical complexity, skilful installation and aesthetic value secured the 2024 Roofing Awards trophy for EJ Roberts for best Multi-Discipline Project over £250k.

Paschal Fennelly, estimator with EJ Roberts, said: "It was one of the most challenging contracts ever for our company but this roof is probably a perfect application of Welsh Slate to unify a unique roofscape.

"We are blessed to have great roofers who delivered the best standards of workmanship, and of course the star of the show is the new Welsh Slate."

For more information email: [enquiries@welshslate.com](mailto:enquiries@welshslate.com) or visit [www.welshslate.com](http://www.welshslate.com)



## FLEX-R WINS FORTIS ROOFING SUPPLIER OF THE YEAR

FLEX-R was awarded Roofing Supplier of the Year at the recent Fortis Building & Timber conference, which was held over two days at the Celtic Manor resort in South Wales.

With 40 merchant members and numerous suppliers in attendance, it is seen as one of the sector's most focused and intensive networking events.

The buying group's dinner and awards ceremony, held on the final evening of the conference on 17th April, recognised excellence and achievement amongst suppliers. Awards were presented across nine product category groups, and Flex R was announced as the winner in its category on the night.

Barry Shorrock, Sales Director at Flex-R, said: "It was an amazing awards evening at the Fortis Conference, and it was fantastic to be nominated for Roofing Supplier of the Year.

"When we were announced as the overall winner, it was unbelievable; we were delighted."

The award was accepted by Barry and Trading Director Danny Cole, but they were quick to give credit to their team.

Danny said: "We'd like to thank the entire team at Flex-R for the unbelievable work they carried out and the service they delivered during the year to our Fortis members. It was a collective team effort that included the sales, technical, and all internal departments.

"We'd also like to thank the Fortis committee for their nomination and the members for their continued support."

Get in touch at [enq@flex-r.co.uk](mailto:enq@flex-r.co.uk) or visit the website: [www.flex-r.co.uk](http://www.flex-r.co.uk)







# INSULATION SPECIALIST ACTIS AIMS TO REDUCE THE CONSTRUCTION INDUSTRY SKILLS GAP



*Actis UK and Ireland sales director Mark Cooper says his company is effectively operating a 'pincer movement' to address both ends of the skills gap dilemma*

With the construction industry short of almost a quarter of a million construction workers if the UK is to meet its 2027 building targets, according to the Construction Industry Training Board (CITB), the race is on to encourage more young people to consider careers in the industry.

As well as a need to recruit the 'missing' 225,000-strong workforce, speeding up construction methods will also have an impact on the number of boots required on the ground, says insulation specialist **ACTIS**.

Its UK and Ireland sales director Mark Cooper says the company is operating a 'pincer movement' to address both ends of the skills gap dilemma.

On the recruitment side, members of the Actis team are going out and sharing the joy of working in construction with young people at schools and colleges across the UK.

On the 'speedier construction' side of the skills gap fence, Actis is addressing this by designing materials which make part of the construction process quicker.

The speed and ease of installation of the Actis Hybrid range and its new Eolis HC have been much praised by builders and specifiers. In some cases it can take half the time of using a solid alternative, meaning that 'spare' time can be spent doing other, more complex, activities.

Added to this, the products are popular with timber framers whose homes, in turn, can be built up to 30 per cent more quickly than traditional brick and block.

For more information visit [www.insulation-actis.com](http://www.insulation-actis.com).

*Insulation specialist Actis is helping to address the construction skills gap on two fronts—by encouraging more young people to go into the profession as well as embracing speedier build processes which are more productive per person hour.*



*Members of the Actis specification and sales team, including CPD co-writer, specification manager Amaret Chahal, are encouraging more young people to consider a career in construction through outreach projects at schools and colleges.*



(L-R): Rob Woodward, Comedian/Host, Barry Shorrocks, Sales Director Flex-R, Daryl Long, Fortis Category Director for Roofing & Waterproofing Products and Danny Cole, Trading Director Flex-R





**MANUFACTURERS**

**A. Proctor Group Ltd**  
www.proctorgroup.com  
01250 872261  
contact@proctorgroup.com

**ACO Building Drainage**  
www.aco.co.uk/aco-building-drainage  
01462 816666  
abdmarketing@aco.co.uk

**Actis Insulation Ltd**  
www.insulation-actis.com  
01249 462888  
solutions@insulation-actis.com

**Airflow (Nicoll Ventilators) Limited**  
www.airflow-vent.co.uk  
01425 611547  
sales@airflow-vent.co.uk

**Alumasc Building Products Ltd**  
www.alumascroofing.com  
01744 648 400  
info@alumascroofing.com

**Ampteam Ltd**  
www.ampteam.co.uk  
01384 252777  
unfold@ampteam.co.uk

**Apollo Roofing Solutions**  
www.apolloroofingsolutions.co.uk  
01827 54281  
apollo-enquiries@hbfuller.com

**Arbor Forest Products Ltd**  
www.arborforestproducts.co.uk  
01469 532300  
sales@arborforestproducts.co.uk

**Ash and Lacy Building Systems Ltd**  
www.ashandlacy.com  
0121 525 1444  
will.bishop@ashandlacy.com

**Axter Ltd**  
www.axter.co.uk  
01473 724056  
info@axtertd.co.uk

**Bauder Ltd**  
www.bauder.co.uk  
01473 257671  
technical@bauder.co.uk

**Bilco UK Ltd**  
www.bilcouk.co.uk  
01284 701696  
bilcouk@bilco.com

**BMI UK & Ireland**  
www.bmigroup.com/uk  
01908 015760  
sales.admin@bmigroup.com

**Boulder Developments Ltd**  
www.superfoil.co.uk  
01636 639900  
technical@boulder.co.uk

**Bove Draadproducten BV**  
www.bove-nl.nl  
00 31 486 411 868  
jules@bove.eu

**Breedon Group**  
www.breedongroup.com  
028 92 647100  
productsales@breedongroup.com

**CA Group Ltd**  
www.cagroup.co.uk  
01388 834242  
development@cagroup.co.uk

**Carlisle Construction Materials Ltd**  
www.ccm-europe.com  
01 623 627285  
info.uk@ccm-europe.com

**Cedral**  
www.cedral.world/en-gb  
01283 501555  
matthew.castles@etexgroup.com

**Centaur Technologies**  
www.centaurroofing.co.uk  
01722 453107  
jl@centaurroofing.co.uk

**CGI Systems Ltd**  
www.cgisystems.co.uk  
01355 243021  
sales@cgisystems.co.uk

**CPI Mortars Ltd**  
www.cpi.euromix.com  
01698 464110  
enquiries@cpi.euromix.com

**Cromar Building Products Ltd**  
www.cromar.co.uk  
01977 663133  
sales@cromar.uk.com

**CUPA Pizarra S.A**  
www.cupapizarra.com/uk  
020 3318 4455  
uk@cupapizarra.com

**Danosa UK Ltd**  
www.danosa.com  
0845 074 0553  
uksales@danosa.com

**DEKS Industries Europe Ltd**  
www.deks.co.uk  
01275 858866  
sales@deks.co.uk

**Don & Low**  
www.donlow.co.uk  
07500 910536  
mark.gray@donlow.co.uk

**DuPont Tyvek**  
www.dupont.co.uk  
08444 068 722  
tyvek.construction@dupont.com

**Eco Green Group**  
www.egr.co.uk  
01277 355705  
info@egr.co.uk

**Edilians**  
www.edilians.com  
07818 043808  
geoffrey.doran@edilians.com

**EJOT UK Ltd**  
www.ejot.co.uk  
01977 687040  
info@ejot.co.uk

**Elevate UK and Ireland (EWSC Ltd)**  
www.Holcimelevate.com  
01565 756185  
info@ewscld.co.uk

**Euroclad Group Ltd**  
www.eurocladgroup.com  
02922 010101  
enquiries@eurocladgroup.com

**Evolution Fasteners (UK) Ltd**  
www.evolutionfasteners.co.uk  
0141 647 7100  
technical@evolutionfasteners.co.uk

**Fakro GB Ltd**  
www.fakro.co.uk  
01283 554755  
sales@fakrogb.com

**Filon Products Ltd**  
www.filon.co.uk  
01543 687300  
sales@filon.co.uk

**First Glass Roofs Ltd**  
www.firstglassroofs.com  
01420 520580  
firstglassroofs@outlook.com

**Firth Steels Ltd**  
www.firth-steels.co.uk  
01484 405940  
info@firth-steels.co.uk

**Flex-R Ltd**  
www.flex-r.co.uk  
01494 448792  
enq@flex-r.co.uk

**FOAMGLAS®**  
www.foamglas.co.uk  
03301 227 638  
info@foamglas.co.uk

**FP McCann Ltd**  
www.fpmccann.co.uk  
01455 290780  
sales@fpmccann.co.uk

**G & B (North West) Ltd**  
www.gandbnw.co.uk  
01942 518150  
enquiries@gandbnw.co.uk

**Geco Waterproofing Systems**  
www.gecomembrane.com/en  
00 39 045 6616246  
export@gecomembrane.com

**Genius Roof Solutions**  
www.geniusroofsolutions.com  
01257 793113  
joanna@geniusroofsolutions.com

**Guttercrest Ltd**  
www.guttercrest.co.uk  
01691 663300  
info@guttercrest.co.uk

**Glidvale Protect**  
www.glidvaleprotect.com  
0161 905 5700  
info@glidvaleprotect.com

**H C Waxall & Co Ltd**  
www.wraxalls.co.uk  
01797 322396  
office@wraxalls.co.uk

**Hambleside Danelaw Ltd**  
www.hambleside-danelaw.co.uk  
01327 701900  
sales@hambleside-danelaw.co.uk

**HD Sharman Ltd**  
www.hdsharman.co.uk  
01298 812371  
info@hdsharman.co.uk

**HS Butyl Ltd**  
www.hsbutyl.com  
01590 684400  
sales@hsbutyl.com

**ICB (Waterproofing) Ltd**  
www.icb.co.uk  
01202 785200  
info@icb.co.uk

**IKO PLC**  
www.ikogroup.co.uk  
01257 255771  
info.uk@iko.com

**InStar UK Ltd**  
www.instar-uk.co.uk  
01858 456949  
info@instar-uk.co.uk

**IPP Ltd**  
www.intpetro.com  
01621 776252  
ollie@maggply.co.uk

**Jordeson Timber**  
www.jordeson.co.uk  
01904 633351  
office@jordeson.co.uk

**Keylite Roof Windows**  
www.keyliteroofwindows.com  
01283 200150  
info@keyliteuk.com

**Kingspan Insulation Ltd**  
www.kingspan.com  
01544 388 601  
info@kingspaninsulation.co.uk

**Kingspan Ltd**  
www.kingspan.com  
01351 706101  
aisling.sands@kingspan.com

**Klober Ltd**  
www.klober.co.uk  
03306 780088  
info@klober.co.uk

**Knauf Insulation Ltd**  
www.knauf.co.uk  
01744 766866  
marketing.uk@knaufinsulation.com

**Kytun (UK) Ltd**  
www.kytun.com  
01684 293702  
info@kytun.com

**Liquid Roofing Systems Ltd**  
www.lrs-systems.co.uk  
01948 841 877  
enquiries@lrs-systems.co.uk

**Mannok Build Ltd**  
www.mannokbuild.com  
08000 322 122  
sales@mannokbuild.com

**Mapei (UK) Ltd**  
www.mapei.co.uk  
01902 637422  
ukmarketing@mapei.co.uk

**Manthorpe Building Products**  
www.manthorpepb.co.uk  
01773 303000  
mbp.care@manthorpepb.co.uk

**Marley Ltd**  
www.marley.co.uk  
01283 722588  
info@marley.co.uk

**Metal Solutions Ltd**  
www.metalsolutions.com  
01204 491800  
sales@metalsolutions.com

**Nordic Forest (UK) Ltd**  
www.nordicforest.co.uk  
0208 304 1016  
andy@nordicforest.co.uk

**Northstone NI Ltd - Materials Division**  
www.northstoneroofiles-gb.com  
02870 321100  
enquiries@northstone-ni.com

**Onduline**  
www.onduline.com/en  
0207 727 0533  
enquiries@onduline.net

**Paslode Spit (ITW Construction Products)**  
www.itw.co.uk  
0800 833 381  
PO-CS@itwcp.com

**Permavent Ltd**  
www.permavent.co.uk  
01305 766703  
enquiries@permavent.co.uk

**Pizarra Samaca, S.A.U**  
www.samaca.com  
00 34 988 335 555  
samaca@samaca.com

**Polyroof Products Ltd**  
www.polyroof.co.uk  
01352 735135  
admin@polyroof.co.uk

**PREFA UK LTD**  
uk.prefa.com  
020 7795 8124  
office.uk@prefa.com

**Premier Sealant Systems Ltd**  
www.ssaiiprem.com  
01724 864100  
sales@ssaiiprem.com

**Protan (UK) Ltd**  
www.protan.co.uk  
01925 658 001  
sales@protan.co.uk

**Protector Group UK Ltd**  
www.protector.co.uk  
01562 512000  
sales@protector.co.uk

**Proteus Waterproofing**  
www.proteuswaterproofing.co.uk  
01268 777871  
enquiries@proteuswaterproofing.co.uk

**Radmat Building Products Ltd**  
www.radmat.com  
01858 410372  
techenquiries@radmat.com

**Recticel Insulation UK Ltd**  
www.recticelinsulation.com  
01782 590470  
technicalservices@recticel.com

**Remix Dry Mortar Ltd**  
www.remixdrymortar.co.uk  
01329 231200  
info@remixdrymortar.co.uk

**Restec Roofing Ltd**  
www.restecroofing.co.uk  
0845 4504 193  
enquiries@restecroofing.co.uk

**ROCKWOOL UK Ltd**  
www.rockwool.co.uk  
01656 862621  
info@rockwool.com

**Rose Roofing Ltd**  
www.rose-roofing.co.uk  
01977 516044  
sales@rose-roofing.co.uk

**Rubberseal Ltd**  
www.rubberseal.com  
01290 559 333  
info@rubberseal.com

**S R Timber Ltd**  
www.sr-timber.co.uk  
01623 446800  
sales@sr-timber.co.uk

**Shield Membranes**  
www.shieldmembranes.com  
020 7740 9279  
info@shieldmembranes.com

**Siderise Insulation Limited**  
www.siderise.com  
01656 730833  
salesteam@siderise.com

**Sievert UK**  
www.sievert.se  
01536 310300  
sales@rothenberger.co.uk

**Sika Limited**  
www.gbr.sika.com  
01707 394444  
enquiries@uk.sika.com

**Sky Garden Greenroofs Ltd**  
www.sky-garden.co.uk  
01242 620905  
enquiries@sky-garden.co.uk

**Skyline Architectural Aluminium c/o Alumasc Water Management Systems**  
www.alumascwms.co.uk/brands/skyline  
01536 383810  
info@alumascwms.co.uk

**Softit Ltd**  
softit.co.uk  
07775 897980  
sales@softit.co.uk

**Soprema UK**  
www.soprema.co.uk  
0330 058 0668  
info@soprema.co.uk

**Stotech**  
www.stotech-optima.co.uk  
07850 089210  
technical@stotech-optima.co.uk

**Strata Waterproofing Ltd**  
www.stratawaterproofing.com  
028 9030 2924  
info@stratawaterproofing.com

**Sundolitt Ltd**  
www.sundolitt.com  
01786 471586  
enquiries@sundolitt.com

**Surespan Ltd**  
www.surespancovers.com  
01922 711185  
sales@surespancovers.com

**Swisspearl GB Ltd**  
www.swisspearl.com  
01925 748 246  
info@gb.swisspearl.com

**The Garland Company UK Ltd**  
www.garlanduktd.co.uk  
01174 401050  
info@garlanduktd.co.uk

**Topseal Systems Ltd**  
www.topseal.co.uk  
01423 886 495  
enquiries@topseal.co.uk

**Triflex (UK) Limited**  
www.triflex.co.uk  
01785 819119  
info@triflex.co.uk

**Ubbink UK Ltd**  
www.ubbink.co.uk  
01604 433000  
sales@ubbink.co.uk

**Unilin Insulation UK Ltd**  
www.unilininsulation.co.uk  
00 353 46 906 6097  
marketing.uk@unilin.com

**VELUX**  
www.velux.co.uk  
01592 778 225  
sales@velux.co.uk

**Wallbarn Ltd**  
www.wallbarn.com  
0208 916 2222  
sales@wallbarn.com

**Welsh Slate Ltd**  
www.welshslate.com  
01248 600656  
enquiries@welshslate.com

**Westwood Liquid Technologies Ltd**  
www.westwood-uk.com  
0800 808 5480  
info@westwood-uk.com

**Wienerberger Ltd**  
www.wienerberger.co.uk  
01427 871200  
simon.garbett@wienerberger.com

**W J Horrod Ltd**  
www.wjhorrod.co.uk  
020 8539 8746  
info@wjhorrod.co.uk

**Belgrade Insulations Ltd**  
www.belgradeinsulations.com  
0113 252 6524  
info@belgradeinsulations.com

**Burton Roofing Merchants Ltd**  
www.burtonroofing.co.uk  
01254 777 777  
enquiries@burtonroofing.co.uk

**Chandlers Roofing Supplies**  
www.chandlersroofing.co.uk  
01273 815100  
enquiries@chandlersbs.co.uk

**China Slate Ltd**  
www.chinaslate.co.uk  
01246 865222  
sales@chinaslate.co.uk

**MERCHANTS**

**CTF Insulation Ltd**  
www.ctfinsulation.co.uk  
0333 207 0870  
office@ctfinsulation.co.uk

**Encon Insulation**  
www.encon.co.uk  
01937 524 200  
info@encon.co.uk

**Euro Building Supplies**  
www.eurobuildingsupplies.co.uk  
07813 012197  
geoff@eurobuildingsupplies.co.uk

**Fixing Point Ltd**  
www.fixingpoint.com  
01242 265100  
sales@fixingpoint.com

**Galaxy Insulation & Drying Ltd**  
www.galaxyinsulation.co.uk  
0114 700 5702  
garyanthony@galaxyinsulation.co.uk

**Independent Roofing Supplies Ltd**  
www.irsl.co.uk  
01273 516999  
enquiries@irsl.co.uk

**Harrowden Turf Ltd**  
www.harrowdenturf.co.uk  
01832 777100  
marketing@harrowdenturf.co.uk

**Industrial Roofing Products Ltd**  
www.irpltd.co.uk  
01454 299588  
sales@irpltd.co.uk

**Lagan Building Solutions Ltd**  
www.lbsproducts.com  
0800 096 7612  
info@lbsproducts.com

**Langley Group**  
www.langley.co.uk  
01327 704778  
enquiries@langley.co.uk

**Linroc Ltd**  
www.linroc.co.uk  
01793 764000  
info@linroc.co.uk

**MAK Fasteners (NI) Ltd**  
www.makfasteners.com  
0161 866 8164  
uksales@makfasteners.com

**Meir Roofing & Insulation Supplies**  
www.meir-roofing.co.uk  
01405 780444  
sales@meir-roofing.co.uk

**Mercury Building Products Ltd**  
www.mercurybuildingproducts.co.uk  
01246 292816  
orders@vaprfee.co.uk

**Northern Slate Supplies Limited**  
www.northernslate.co.uk  
07487 870070  
john@northernslate.co.uk

**Onestop Roofing Supplies Ltd**  
www.onestoproofingsupplies.com  
0141 445 6777  
natalie@weareonestop.com

**Raven Roofing and Building Supplies Ltd**  
www.ravenroofingsupplies.co.uk  
0208 893 8954  
info@ravenroofingsupplies.co.uk

**Robert Price Roofing**  
www.robert-price.co.uk  
01873 858585  
enquiries@robert-price.co.uk

**Saucer Solutions Ltd**  
www.saucersolutions.co.uk  
0141 774 0065  
sales@saucersolutions.com

**SIG Insulation**  
www.sigdistribution.co.uk  
0330 123 0100  
dianejeffrey@sigplc.com

**SIG Roofing Head Office**  
www.sigroofing.co.uk  
01480 466777  
info@sigroofing.co.uk

**Skyline Roofing Centres**  
www.skylineroofing.co.uk  
0208 571 6128  
info@skylineroofing.co.uk

**Spanish Slate Quarries UK Ltd**  
www.ssqgroup.com  
020 8961 7725  
info@ssq.co.uk

**Stephens Industries Ltd**  
www.stephens-industries.co.uk  
01225 810324  
info@stephens-industries.co.uk

**Tapered Plus Ltd**  
www.taperedplus.co.uk  
01642 677342  
sales@taperedplus.co.uk

**UK Roofing & Plastic Supplies Ltd**  
www.ukroofingsupplies.co.uk  
01753 539820  
info@ukroofingsupplies.co.uk

**Wonderbuilds Inc. Limited**  
www.wonderbuilds.co.uk  
0208 208 2121  
admin@wonderbuilds.co.uk

**SERVICE PROVIDERS**

**AbiCAD Ltd**  
www.abicad.co.uk  
01489 589454  
admin@abicad.co.uk

**Adler Fairways Insurance Brokers Ltd**  
www.adlerfairways.co.uk  
07355 094296  
jake.shutler@adlerfairways.co.uk

**BGI.UK**  
www.bgi.co.uk  
01367 246130  
info@bgi.co.uk

**Clear MPW**  
www.thecleargroup.com  
01622 683913  
enquiries@thecleargroup.com

**Drummond Roofing Consultancy Ltd**  
www.drummondroofingconsultancy.co.uk  
07515 027576  
gilles@drummondroofingconsultancy.co.uk

**James Hallam Real Estate and Construction**  
www.jameshallam.co.uk  
01923 603 168  
robert.legg@jameshallam.co.uk

**McCarron Coates Ltd**  
www.mccarroncoates.com  
0113 298 3489  
info@mccarroncoates.com

**Migrate UK**  
www.migrate-uk.com  
07717 717799  
dwarren@migrate-uk.com

**Norelo Ltd**  
www.norelo.co.uk  
0141 353 9557  
info@norelo.co.uk

**Phillips Green & Murphy Solicitors**  
www.pgmssolicitors.co.uk  
01792 468684  
enquiries@pgmssolicitors.co.uk

**PJE International**  
www.pjeinternational.co.uk  
0116 367 6123  
pete@pjeinternational.co.uk

**QANW**  
www.qanw.co.uk  
01292 268020  
info@qanw.co.uk

**Roof Test Consultancy Ltd**  
www.rooftestconsultancy.co.uk  
0208 470 8118  
office@rooftestconsultancy.co.uk

**Roof Tests & Surveys Ltd**  
www.rooftestsandsurveys.co.uk  
07955 206708  
info@rooftestsandsurveys.co.uk

**Surveyroof Ltd**  
www.surveyroof.co.uk  
0345 257 7663  
sales@surveyroof.co.uk

**The Pallet LOOP**  
www.thepalletloop.com  
0800 024 6130  
info@thepalletloop.com

**Thornton Consulting Group Ltd**  
www.thorntonconsulting.co.uk  
01342 410508  
mail@thorntonconsulting.co.uk