

ROOFING TIMES

ISSUE

18

NATIONAL APPRENTICESHIP WEEK:

RUTH SCARROTT TALKS FUTURE ROOFERS WITH ITN

NATIONAL APPRENTICESHIP WEEK 2024 is 5 - 11 February in England, with **SCOTTISH APPRENTICESHIP WEEK** following from 4 - 8 March.

These initiatives present an opportunity to spotlight the prospects available in the roofing industry for apprenticeships and career progression.

NFRC's Head of Careers Ruth Scarrott has kicked off National Apprenticeship Week with a conversation with ITN, spreading the word to young people, their parents and influencers, and people of all ages looking to begin a rewarding career.

The interview explored the importance of the sector, busted myths around working in roofing, and showcased the advantages of a construction apprenticeship.

Ruth also gave a reminder that there is a wide range of roles available in the roofing industry, across many disciplines and both on and off the tools, and that once trained and



ROOFING CAREERS SERVICE

NFRC



experienced, operatives can become their own boss. She reinforced that apprenticeships need to stop being compared to university, and can stand alone as a worthwhile route to a great career.

With so many career options to choose from, and a lack of knowledge from young people, parents, and careers advisors on the opportunities construction can offer, more and more resources are now available to provide more information. For roofing specifically, nfrf.co.uk/careers holds a wealth of resources.

NFRC continues to work to promote roofing's professional image, and works collaboratively with employers to help them promote and prepare for apprenticeship opportunities within their business. Ruth also leads delivery of a programme that supports new starters through the crucial first six months at their new roofing industry employer.

THANKS TO OUR SPONSORS OF THE NFRC UK ROOFING AWARDS 2024 FOR THEIR CONTINUED SUPPORT



Headline sponsor



BUILDING TRUST



ACTIS HELPS CREATE BUILDING CONTROL U-VALUE GUIDE



Working with Hertfordshire Building Control, the new home extension insulation specification guide titled 'U-value of Elements New Gold Guide' has been produced with help from a number of insulation and concrete block manufacturers. It is aimed at helping contractors and specifiers comply with Part L of the building regulations.

The guide shows in detail different solutions in a range of scenarios, such as timber frame walls, pitched and flat roofs with warm and cold decks and floors.

Actis UK and Ireland technical director Thomas Wiedmer said:

“ WE WERE DELIGHTED TO WORK WITH HERTFORDSHIRE BUILDING CONTROL WHO WANTED TO CREATE A COMPREHENSIVE BOOKLET OFFERING THE BEST POSSIBLE ADVICE. ”

Charts show, for example, that one way in which to achieve the required U-value of 0.18 in a timber frame wall is to use 50 mm Actis Hybris along with insulating vapour control layer H Control Hybrid and insulating breather member Boost R Hybrid.

One solution for a vented pitched roof with a required U-value of 0.15 would be to use new Eolis HC and insulated plasterboard. An alternative would be to use a combination of Hybris and H Control Hybrid, with each solution suiting both 400 mm and 600 mm centres.

Among options suggested to achieve a U-value of 0.15 in a warm pitched roof is the use of Boost R Hybrid Roof, which contains a lap and built-in adhesive tape for ease of installation, 90 mm Hybris and H Control Hybrid. While this is the solution for 600 mm centres, the Hybris thickness would need to increase to 105 mm when working with 400 mm centres.



Actis has been working with Hertfordshire Building Control to create a U-value guide for home extensions

You can receive a copy of the guide at <https://bit.ly/3HtySob>

As a Member, you are part of a roofing community which is dedicated to raising the standards of roofing whilst making sure your voice is heard through our targeted and member focused policy work with government bodies and representatives.

NFRC membership is so much more than a logo!

NFRC
LEADING ROOFING EXCELLENCE

VELUX® GIVES YOU A CHOICE OF DAYLIGHT SOLUTIONS FOR ALL PROJECT TYPES AND NEEDS

Providing your customers with a healthy indoor climate that is filled with plenty of daylight and fresh air. Ensure that you are taking the right steps to create a healthier indoor climate for them and their families.



WHITE MAINTENANCE-FREE

The most durable and robust finish that is completely maintenance-free.

Moisture resistant

The ideal choice for all room types no matter the level of moisture or condensation.

Wipeable surface

The seamless corners and robust material make it quick and easy to clean.

Outstanding quality

A wooden core encased in a hard-wearing, waterproof white polyurethane mould.

SOLAR ROOF WINDOWS ELIMINATE THE NEED FOR WIRING

Powered by daylight

By utilising the power of daylight, solar roof windows offer a solution that promotes the use of renewable energy.

Reliable even when it's cloudy

With an integrated solar cell on the exterior, the roof window collects daylight throughout the day, even when it's cloudy.



Easy control for everyone

Upgrade your customers' solar roof windows with our Intelligent Home Control range. Control roof windows effortlessly and adjust the natural light and ventilation easily.

MULTIPLE ROOF WINDOWS

It is easy to combine multiple roof windows to expand your customer's view and bring more daylight and fresh air into their home. Select from our recommended solutions or create your own from virtually any combination of **VELUX** roof windows.

HOME DECARBONISATION FUND SKILLS TRAINING COMPETITION PHASE 2 SUCCESS

LANGLEY has been selected by the Department of Energy Security and Net Zero (DESNZ) to support skills training for people working or who want to work in the energy efficiency and building retrofit sectors.

The time-limited, subsidised training offer (until March 2024) is open to individuals with existing skills and provides training for those new to the sector. The funding will increase the number of skilled workers within the supply chain nationally through recognised PAS 2030 qualifications.

The increased supply chain capacity will support the delivery of existing government retrofit schemes, such as the Social Housing Decarbonisation Fund, Energy Company Obligation, Great British Insulation Scheme, Home Upgrade Grant and the decarbonisation of our buildings in support of the UK's net zero carbon emissions target.

This provides an opportunity for Langley's valued stakeholder and customer network associated with Social Housing Decarbonisation and ECO projects to ensure they have a



workforce equipped with the appropriate competencies to meet the scale of retrofitting installations required nationally.

The project underpins Langley's commitment to delivering a Langley Social Value legacy by building people skills where there is the most significant industry need and supporting the building of a sustainable future for the communities they serve.

£8.85 million in funding will be available to training providers through the Home Decarbonisation Skills training scheme for programmes to deliver training solutions to support the energy efficiency and retrofit sectors.

For further information, please contact s.to@langley.co.uk

NFRC WELCOMES LATEST SUPPLIER MEMBER FP McCANN WITH NEW £30M CONCRETE ROOF TILE DIVISION

New NFRC Supplier Member, FP McCANN, has recently opened a state-of-the-art concrete roof tile manufacturing facility to supply an extensive range of concrete roofing products to the housing and commercial sectors. The fully-automated facility at the company's Cadeby precast site, near Nuneaton in Leicestershire, has the capacity to produce 60 million roof tiles per annum; it will also deliver impressive carbon reductions as the factory is 100% powered by solar panels.

FP McCann is entering the market with its thin leading edge interlocking concrete roof tiles—"Thin Flat" and "Thin Flat Duo". In place, the tiles give a slate-like appearance when laid half broken bond. The modern-looking

low-profile tiles available in Anthracite Grey, Terracotta and Brown, feature a smooth non-textured finish and bullnose edge. The "Seawave" is a standard profile concrete roof tile with a subtle soft-roll design. This classic double pantile feature lends itself to both traditional and contemporary styles.

Commenting on the new products, Jonathan Pratt, FP McCann's National Roof Tile Manager says, "We will guarantee the highest standards of quality whilst also providing the market with a low-cost solution to all their pitched roofing requirements. Following thorough testing for wind uplift and water resistance, FP McCann can confidently state that all three tile formats will be installable to a 17.5 degree pitch whilst maintaining integrity and water tightness when installed and fixed to BS5534 standards and NHBC construction guidelines".

For more information visit <https://fpmccann.co.uk/uk/concrete-roof-tiles/>



ONDULINE LAUNCHES ENHANCED INSTALLATION GUIDE FOR ISOLINE SUB-ROOF SYSTEM

ONDULINE, a leading lightweight roofing systems and waterproofing specialist, has launched an improved installation guide for its innovative sub-roof system **ISOLINE® LOW LINE** – the only sub-roof system in the UK to be BRE tested and BBA Accredited to as low as 10° with a 30-year guarantee.

Specifically designed for use on low pitch roofs, this lightweight bituminous underlay sheeting is fitted under roof tiles, thus being shielded from elements such as wind and rain, making it an exceptional long-lasting waterproofing solution.

In addition to the comprehensive overview of how the **ISOLINE® LOW LINE** systems works and the applications it suits, the updated guide now provides details on how to create a watertight pipe or vent penetration, how to integrate photovoltaic (PV) fixings and solar panels into the roof structure, as well as advice on fixings and the different types of battens the system is compatible with.

With the increase in popularity of PV panels, particularly on residential roofs, Onduline has developed a solution to seamlessly integrate PV panels in to the **ISOLINE® LOW LINE** system. This innovation now enables the sub-roof system to meet the increase in demands for green energy.

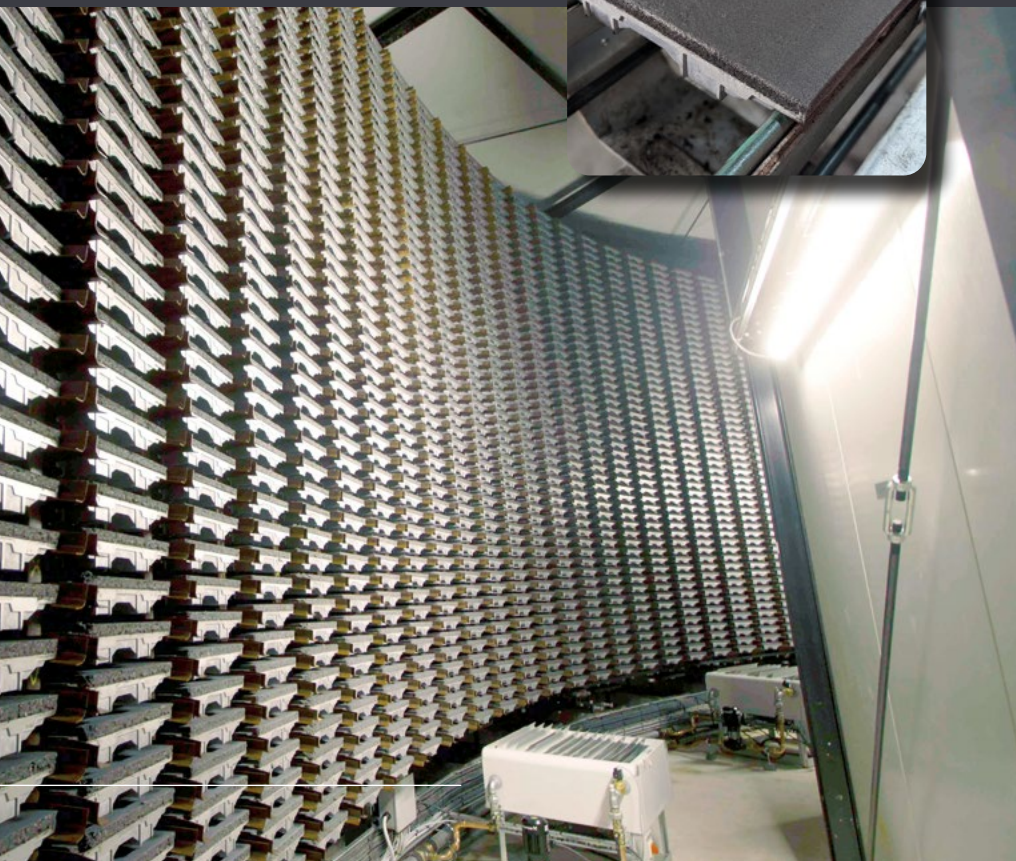
Ardit Strica, Technical Manager at Onduline, said: *“As the only bituminous corrugated sub-roof system in the UK that can be used on a pitch as low as 10°, ISOLINE® LOW LINE is a truly unique solution and we are thrilled to see the positive impact the system is having on the construction industry.*

“The launch of the improved installation guide allows professionals to explore the benefits of the sub-roof system, understand its versatility, and see how just how easy it is to install.”



To view the improved **ISOLINE® LOW LINE** installation guide, visit <https://bit.ly/3S8AHfo>.

ALONG WITH COMPLEMENTARY TILE ACCESSORIES, THE FP MCCANN ROOFING PRODUCTS OFFERING IS COVERED IN ITS ENTIRETY BY A 15 YEAR GUARANTEE.



NFRC

LEADING ROOFING EXCELLENCE

If you enjoy meeting up with fellow members both Trade and Supplier, then join us at one of the many **NFRC events throughout the year**, whether it is a local pub quiz, a technical talk or a gala awards dinner, there is always something going on.

NFRC membership is so much more than a logo!

DELIVERING EXTREME SAFETY IN CROWDED AREAS

The need to deliver extreme safety under difficult people situations at Hay's Galleria near London Bridge, presented a major challenge for **PROTEUS WATERPROOFING**. Originally a warehouse and associated wharf (*Hay's Wharf*) for the port of London, this Grade II listed structure was redeveloped in the 1980s and at the time, was one of the largest construction projects in the country.

To preserve this historic gem and protect it from deterioration, the client required a preventative maintenance programme to the gutters and 2,400 square meters of standing-seam roof areas, extending the lifespan of the zinc roof sheets and metal box gutters serving the atrium.



This elaborate project possessed many design and installation challenges. Throughout the roofing works the shopping mall below had to be kept open, therefore safety was paramount. To ensure nothing could fall from the roof to the internal floor, a protective netting system was designed and installed 3 m - 4 m to the underside of the whole roof area.

Due to the complexity of the building design, a complicated level of scaffolding was also essential, which included access towers, situated at a height of 24 metres from the floor.

Once the scaffolding and safety netting was installed, the preparation works could commence. This involved selecting low odour products, also crucial for minimising disruption.

Proteus Pro-System® Plus is a low-odour, cold-applied liquid meaning residents and businesses were not affected by the smell of strong fumes, making it ideal for the project, which was successfully completed over a four-month period.

For more information visit
www.proteuswaterproofing.co.uk



ROOFING
CAREERS
SERVICE

NFRC

Need help on recruiting and retaining staff?
Our roofing careers service will be able to
help with support and guidance.

NFRC membership is so much more than a logo!

NFRC
LEADING ROOFING EXCELLENCE



BMI ICOPAL MARKS 100 YEARS OF MANUFACTURING IN MANCHESTER

BMI ICOPAL, the specialists in flat roofing solutions, are celebrating 100 years of manufacturing at their flagship facility in Manchester.

Today, BMI Icopal supports roofing professionals with the specification, manufacture and supply of market-leading systems, providing innovative flat roofing systems that are supported by extensive technical services, diagnostic technology and design.

Having been a dependable partner to contractors over the past century, the company has made its mark on roofscapes across the UK's towns and cities, with notable projects including Heathrow Airport and the National Exhibition Centre, alongside schools, hospitals and retailers—proving the versatility and performance of its flat roofing systems.

Besides equipping contractors with high-performance systems for their projects, BMI Icopal is committed to developing flat roofing

systems that support building owners to unlock the potential of their roof. Through consistent innovation during its century in Manchester, the company has pioneered solvent-free installation and created de-polluting membranes such as Noxite, which actively removes harmful nitrogen oxides from the environment.

Simon Ashworth, Portfolio Manager for Flat Roofing, said: *“Reaching the milestone of 100 years of manufacturing in Manchester is a fantastic achievement for our business, and we’re so proud of the impact we’ve had over that time, directly supporting the development of our industry and working together with our partnering contractors to provide the highest quality flat roofing waterproofing systems and solutions across the UK.*

“As a leading, UK-based manufacturer, we’re well positioned to support all stakeholders with the unique challenges

they face on the job. That goes beyond delivering reliable products and extends to providing leading technical support and services—something that has been enhanced further through our work with the Intelligent Membrane Association over the past three decades. We’re dedicated to continuing this work from our Manchester home for many more decades to come.”

Originally branded as Anderson—a company founded in Belfast by David Anderson in 1854—manufacturing moved to Trafford Park in 1923 as the world-renowned industrial park was being developed. BMI Icopal acquired the business in 1990, building on the company's heritage to drive industry standards and spearhead innovation, including through the development of market-leading bitumen flat roofing systems, Profiles and Thermaweld.

For more information visit www.bmigroup.com/uk/bmi-icopal/



DANOSA'S DANOPOL SINGLE-PLY MEMBRANES HS 1.5 AND HS 1.8 RECEIVE PRESTIGIOUS FM APPROVAL

DANOSA, a leading innovator in flat roofing and waterproofing solutions, celebrates a major accomplishment as its flagship products, DANOPOL HS 1.5 and HS 1.8 single-ply membranes, receive coveted FM Approval from FM Global. This prestigious certification acknowledges the products' exceptional quality, safety, and reliability. FM Approval, granted after rigorous testing, demonstrates a product's ability to prevent property damage, especially during disasters like fire.

DANOPOL HS 1.5 and HS 1.8 membranes, crafted from quality recycled PVC, stand out for their durability and flexibility. Suitable for flat and pitched roofs, these membranes offer effective waterproofing and protection, ensuring buildings' longevity. They boast a service life exceeding 30 years and feature UV resistance, root resistance, and flexibility to accommodate building movement.

For DANOSA, FM Approval signifies its unwavering dedication to quality and safety, establishing the company as an industry leader. Architects, contractors, and building owners benefit from the assurance of investing in quality waterproof solutions, safeguarding their assets effectively.

EXPORT POSITIVITY AS MARKET TURNS INCREASINGLY GLOBAL FOR EJOT COLORFAST



An innovative roofing and cladding fastener developed by EJOT in the UK more than 30 years ago, and now on its third generation, is becoming increasingly popular with contractors around the world.

Specifications of EJOT Colorfast—already the 'go-to' solution in the UK roofing and cladding sector where a colour-matched self-drilling fastener is required—are growing strongly in countries including Australia, New Zealand and the US, as well as in the Caribbean and southeast Asia.

As a typical example, in Australia and New Zealand alone, a steady increase in sales volumes of the FM Approved fastener range has been tracked, with the growth in cold storage applications and insulated panels helping to drive demand here.

INNOVATION STRIKES AGAIN!

HAMBLESIDE DANELAW are delighted to announce their new state of the art lead alternative GRP Roll Top Ridge and Hip Systems: **SwiftRidg™** and **SwiftRidg™+**.

The patent pending SwiftRidg™ and SwiftRidg™+ (GB Patent Application No: 2308115.1) offer a light and durable alternative to lead, zinc, copper, and galvanised steel roll systems. They are designed for use with slate and plain tile roofs at pitches from 20° to 50°.

Tested by BRE to resist wind speeds exceeding 110 mph, SwiftRidg™ and SwiftRidg™+ come with a 20-year service life guarantee and are compliant with the requirements of BS 5534 and BS 8612. There is no toxic or contaminated run off and the systems can therefore be used in rainwater harvesting systems.

These roll top ridge and hip systems are comprised of a three metre GRP roll profile suitable for use on both the ridge and hips

with bespoke 3 m fixing kits including a new and unique omega bracket. The SwiftRidg™+ kit includes an additional vent roll component to provide a ventilated option along the ridge in accordance with BS 5250 where required.

Hambleside Danelaw are a British manufacturer, with their Danelaw brand producing a wide range of ancillary pitched roofing products in their factory in Northamptonshire. Hambleside Danelaw have a passion for innovation, bringing new products to market to maximise the quality and choice available in the roofing industry.

To find the SwiftRidg™ and SwiftRidg™+'s data sheet and installation recommendations head over to Hambleside Danelaw's website at <https://bit.ly/3vJPPlu>. For any questions, please get in touch at techhelp@hambleside-danelaw.co.uk.

This certification cements DANOSA's reputation as a trusted provider of high-performance flat roofing solutions. In an industry where safety and quality are paramount, DANOSA's commitment to excellence makes it the preferred choice for innovative roofing solutions. This achievement not only guarantees the quality and safety of its offerings but also strengthens its position as a leader in the competitive construction materials market.

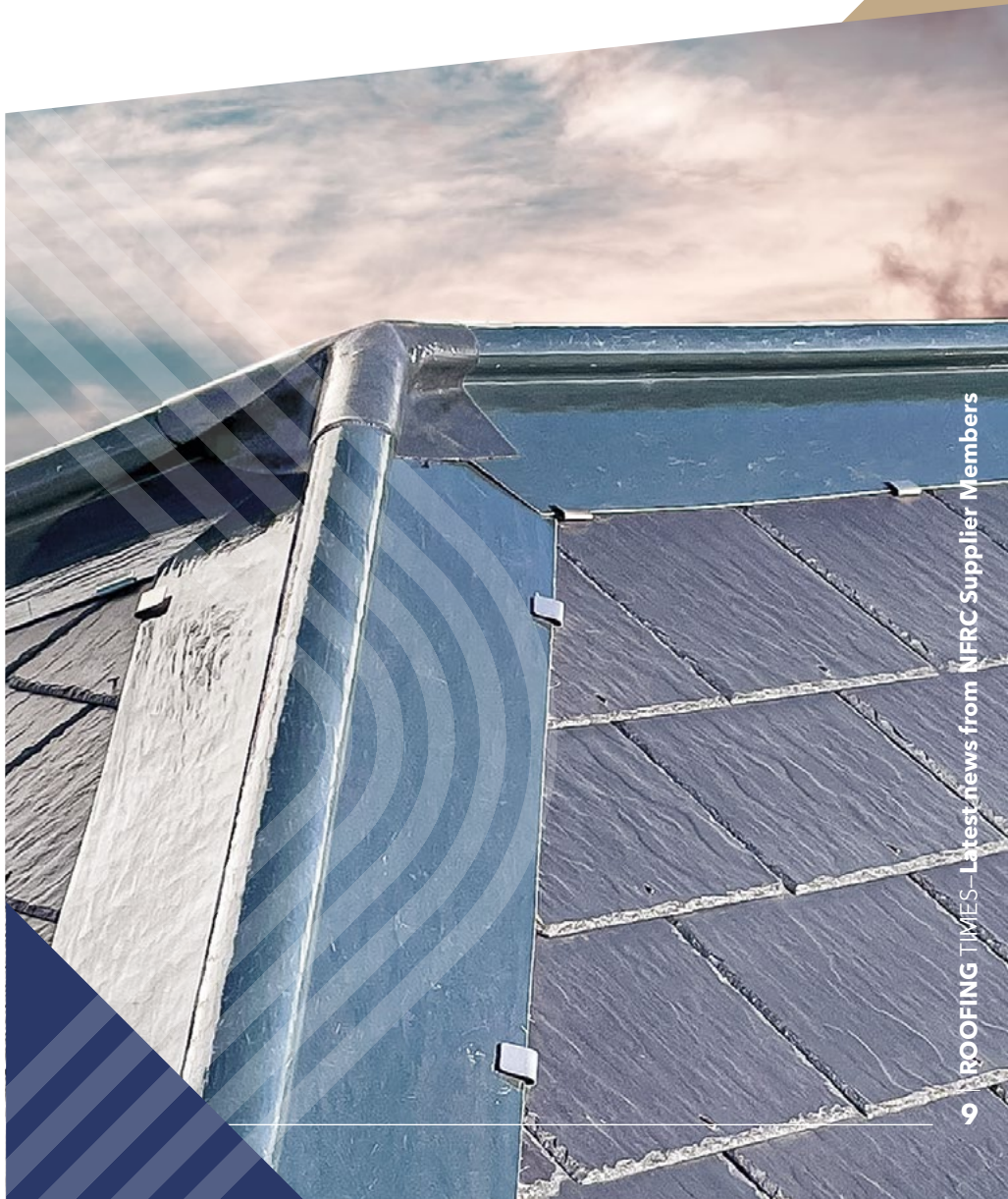
For more information visit www.danosa.com/en-gb/

Find out more at www.ejot.co.uk.

Feedback indicates that many contractors in locations like Australia are adopting new approaches to the design and installation of the building envelope in response to changing building standards, whilst also achieving improved aesthetics and extended design goals.

Ben Gallant, Export Sales Manager at EJOT UK says, *"The trend reflects a culture shift in how buildings are constructed, with a greater adoption of insulated panels, driven by European influencers, an increased focus on adhering to globally recognised standards such as FM Approvals, and a need to demonstrate supply chain integrity.*

As in the UK, Colorfast is also helping overseas contractors meet higher thermal standards due to the consistency of the seal above the sheet, maximising the insulation levels that the panels are designed to deliver within the building."



AMPTEAM AT THE ROYAL ALBERT HALL

Over 400 metres of the Unifold® Gutter lining system was installed on London's iconic venue, The Royal Albert Hall, throughout the summer of 2023.

The Unifold® Gutter Lining System was chosen for its versatility, unfailing ability to replicate existing systems, and its long life.

Following a survey by AMPTEAM personnel, along with Saper Glass Industries Limited, a design solution was provided for the gutters and samples were sent to test fit the Unifold® gutter lining within the gutter cavity, as the throat dimension varied considerably across the profiles.

All runs of the gutter were manufactured to suit the curved nature of the dome which roofs the Hall, and to fit within the minimal throat dimension between the glazing and glazing bars, meaning that bespoke faceted and cranked joint plates were provided so that the new Unifold® lining could follow the profile of the existing gutter.

Full site information was provided including laying sequences, special details and instructions with each delivery of the system.



Ampteam were partnered by Approved Installer, Saper Glass Industries Limited and Faithorn Farrell Timms as contract administrator, and their input and expertise, along with comprehensive discussions throughout, enabled a successful installation of the Unifold® system.

Following installation of the Unifold® every Unifold® gutter run was water tested by flooding the gutter from the top of the run(s) via hose, with additional assistance from the poor weather, and no leaks were detected in any of the installed gutter runs.

If you require any further information please email unifold@ampteam.co.uk

PART L Q&A



Simon Blackham, Senior Technical Manager at RECTICEL INSULATION looks at the implications of the new Part L (Conservation of Fuel and Power) requirements, which aim to reduce carbon emissions in new homes and non-residential buildings by 75% - 80% (compared to 2013 standards).

Q Does a fabric-first approach to building remain the most direct route to achieving Part L requirements and the government's net-zero target?

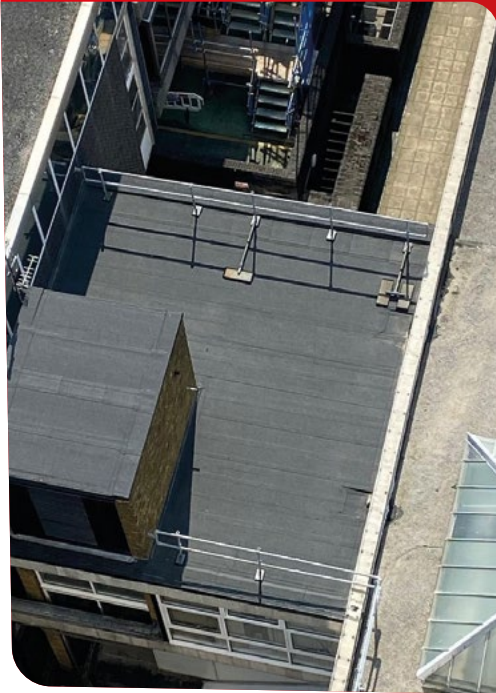
A For renewables such as heat pumps, a fabric-first approach is fundamental for them to work efficiently and provide the right level of comfort for occupants with the lower working flow temperatures provided.

Q What challenges will the Part L changes and the Future Homes Standard's introduction pose to property builders?

A With tighter targets there will be more insulation, potentially larger footprints or changes to materials. With the changes and requirement of imagery to improve the project monitoring process, it will hopefully mean better homes for consumers and as-built construction that reflects the plans.



NEW MAPEI POLYGLASS ROOF FOR ENFIELD COUNCIL CIVIC CENTRE



A MAPEI Polyglass waterproofing roof system has been used to complete an extensive renovation at Enfield Council Civic Centre.

The project spanned the link roof at the Centre and provided ungraded insulation, along with a host of high-performance features that were much-needed to improve the safety and efficiency of the building.

Constructed in 1961, in postmodern style, Enfield Civic Centre has expanded over the years and was refurbished in 2017 to provide an open plan working environment and incorporate new timber grill ceilings.

During the recent roof refurbishment, limestone was carefully removed from the asphalt surface and the existing waterproofing system was cleaned and prepared. Mapei's fast-drying Bituminous primer, Polyprimer

HP45 Professional, was then applied to the surface to eliminate dusting and the roof was treated with germicidal foam.

The new roof system included three Mapei Polyglass membranes which provided strength, stability, water resistance, cold flexibility and puncture resistance. They included: Polyvap SA P-AL prefabricated self-adhesive bitumen membrane, featuring ADESO® technology; Bitulight P - prefabricated elastomeric-plastomeric membrane featuring REOXTHENE® Ultralight Technology compound; and Polyshield prefabricated waterproof plastomeric membrane. The system was installed with Adepur insulation adhesive.

For more information about Mapei products and applications, please contact: info@mapei.co.uk or visit www.mapei.co.uk.

If you need technical advice or 'someone in the know' to talk to about a roofing challenge, NFRC's technical team is only a phone call away, ready to help.

NFRC
LEADING ROOFING EXCELLENCE

NFRC membership is so much more than a logo!



Q What part does high-performance polyisocyanurate PIR play in meeting the new Part L requirements?

A PIR offers flexibility and greater options, enabling designs to be changed without substantially changing existing practices. PIR within lightweight blockwork is capable of achieving a 0.18 W/m²K U-value with a conventional 100 mm masonry cavity construction (300 mm wall + plasterboard on dabs).

Q What changes, if any, would you have advocated for the recent Part L review?

A It might have been an idea to look further into SAP or SBEM in relation to fabric targets. Such a process would help ensure that the entire building envelope performs as required.

To learn more about Recticel products, please visit <https://bit.ly/3Ofq60P>





PROCTOR AIR® ADDED TO NEXT GENERATION PRODUCTS AT A. PROCTOR GROUP

Innovation has run through the Proctor family since its earliest records, and since taking over in 2012, Managing Director, Keira Proctor has continued this tradition, building on this foundation of trust, honesty, and hard work from the very same desk where her father and grandfather made them the company they are today.

The **A. PROCTOR GROUP LTD** has been at the forefront of pitched roofing membrane technology for over 25 years working with our partners across the construction industry, helping to evolve standards, and delivering quality results on projects across the UK and around the world.

Proctor Air® is the result of this quarter century of experience on sites and on drawing boards, listening and responding to the challenges faced by the industry.

The next evolution of roofing underlay technology; Proctor Air has been developed

and manufactured to our precise specifications and requirements. This ensures the on-site performance of our material mirrors the off-site performance, while a 15 year warranty ensures peace of mind for any project, now and in the future.

Hydrophobic additive in all three layers of this next generation product amplifies water holdout, and this, alongside optimised levels of permeability to both air and moisture vapour, Proctor Air delivers the most robust and dependable performance.

This means Proctor Air can be specified on all roof types not just without low- and high-level ventilation, or a vapour control layer, but with confidence.

LONG COLLABORATION HELPS DELIVER STUNNING SHINGLE DESIGN

MARLEY'S ten-year collaborative relationship with world-renowned treehouse design consultancy, Blue Forest, led to an eye-catching garden design project, which took pride of place at the 2023 Chelsea Flower Show.

The specification of Marley's Western Red Cedar Shingles helped to bring to life a fairy tale creation called The Magical Hideaway.

The mystical design was created in collaboration with Landscape Architects Randle Siddeley Ltd and included a stunning treehouse and hillside hollow set within an enchanted meadow garden. The design featured whimsical finishes and furnishings to ignite the imagination of anyone who entered.

Andy Payne, Managing Director at Blue Forest, commented: *"Having worked with Marley on previous projects, we selected*

the Western Red Cedar Shingles as they effortlessly enhanced the natural woodland look and feel we wanted to achieve with The Magical Hideaway project. The finished design was stunning, and we were delighted and very excited to welcome many guests to the stand and enjoyed seeing them immerse themselves in a magical setting."

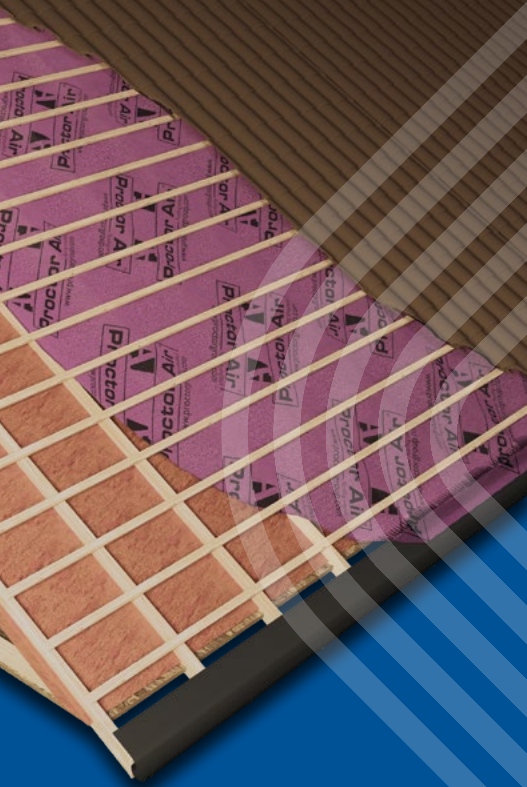
To support the project, Marley supplied a total of 30 bundles of shingles to create the exterior of the treehouse. They helped to encase the design with a warm and high performing envelope that enhanced the natural scenescape of Blue Forest's creative show entry.

Daniel Redfern, Marketing Manager at Marley, added: *"The Magical Hideaway concept was inspiring, so it was great to see that our Western Red Cedar Shingles played*

a significant role in helping to bring it to life. Creating, building, and delivering on such projects can be challenging and complex, but we worked seamlessly with the Blue Forest team to ensure that flexible product delivery matched their build requirements to meet the various important deadlines for the show.

Andy Payne concludes:

"The Magical Hideaway was a fantastic example of how a shingle finish can be



After 25 market-leading years, The A. Proctor Group are once again pushing roofing forward and embracing the future of membrane technology.

The "Air" to the throne has arrived.

For more information on Proctor Air, visit www.proctorgroup.com and let our team show you what comes next.



used imaginatively, but also provide the high-performance qualities we look for from our product selections. Marley was extremely professional throughout the project, offering their expertise and insight, as well as ensuring that we had delivery of the shingles when we needed them."

For more information, visit: <https://bit.ly/3OfL9QS>

In a crowded marketplace **NFRC membership marks your company as one of quality and integrity** and helps you stand out from competitors, giving your clients confidence in your workmanship and experience.

NFRC
LEADING ROOFING EXCELLENCE

NFRC membership is so much more than a logo!



CHINA SLATE LTD GAINING MOMENTUM

China Slate Ltd was founded in 1997 and works very closely with Shaanxi Zhenping Prosper Slate Quarry in China. The two companies have created a close working relationship with each other to increase the sales of Chinese slate, not only in the UK, but around the world. In August 2023 a visit from a delegation of Chinese Government officials and also the owners of the quarry took place with China Slate Ltd to approve China Slate Ltd as the UK overseas warehouse and distribution facility for the Shaanxi Zhenping Prosper Quarry with the support of the government.

The quality of our Chinese slate has vastly improved over the last ten years and is now on par with many slates from quarries around the world. All our slates are compliant to BS 12326-1:2014 and are quality tested in the



UK and pass to standard A1, S1, W1 and T1; 2023 test reports are available. China Slate Ltd products have a quarry-backed guarantee which gives a guarantee between 50 years and 100 years depending on product.

Our supply to merchants, distributors and stockists has grown over the last 24 months as confidence in the Chinese product increases and large UK stock guarantees a fast turnaround. We have large stocks in our yard in Clay Cross, Chesterfield and also a large stock holding in a storage facility in Felixstowe. Also, with the backing of the quarry there is further stock held in China ready to ship if required.

www.chinaslate.co.uk
sales@chinaslate.co.uk

AXTER GETS FIRST CCPI VERIFICATION FOR HOT MELT SYSTEM WILOTEKT PLUS

Wilotekt-Plus, manufactured by AXTER LTD, has received the Code for Construction Product Information (CCPI)* verification, the first second generation hot melt structural waterproofing system to be verified.

As the construction industry adapts to a new and improved building safety regime set out in the Building Safety Act, the CCPI is playing a pivotal role in driving change and setting the highest standards in how product information is managed and communicated. Axter is proud to be working proactively with the CCPI to verify that its Wilotekt-Plus product information is clear, accurate, accessible, up-to-date and unambiguous.

Wilotekt-Plus is a hot melt waterproofing application featuring a polymer-modified bitumen compound, reinforcement mesh, and high-strength protection membrane for a durable, seamless, and self-healing waterproofed roof. The CCPI verification

applies to the whole product set including Wilotekt Surface Conditioning Primer, Wilotekt Reinforcement Mesh, Wilotekt Compound and Wilotekt Protection Membrane.

Phillip Wilcox-Moore, Axter MD, comments:

"We're delighted that Wilotekt-Plus has become one of the first hot melt systems on the UK market to carry the CCPI mark. This is a significant milestone for the Axter team, representing our dedication to leading the industry towards greater transparency and responsibility in product information. This achievement stresses our commitment to transparency and innovation, setting a new benchmark in the construction sector."



CUPACLAD® LANDS AT MATERIAL SOURCE STUDIO MANCHESTER

CUPA PIZARRAS' permanent stand at the Material Source Studio creative hub in Manchester, provides the opportunity to learn about the company's CUPACLAD® rainscreen cladding system.

Visitors to Material Source can discover CUPACLAD®, a range of fully BBA approved, Class A1 non-combustible, natural slate rainscreen cladding systems that provides a myriad of contemporary and traditional design options. At the stand, visitors will be able to learn about the CUPACLAD® range and get hands-on the product itself, thanks to the addition of an in-situ section of CUPACLAD® cladding.

CUPACLAD® has been designed for ease of installation and combines the efficiency of a ventilated façade system with the properties and aesthetic of natural slate, offering a sustainable and versatile cladding solution. The system is available in three different

formats—Logic, Random and Parallel—as well as an innovative Design range of unique shapes and sizes. As such CUPACLAD® can be tailored to each individual project through consultation with CUPA PIZARRAS' experts.

Hannah Wall, UK Marketing Manager at CUPA PIZARRAS, commented: *"Our partnership with Material Source is a really exciting development for CUPA PIZARRAS in the UK. The space is unique in allowing design professionals to see and feel the materials they are specifying, and it gives people the opportunity to test the quality of materials for themselves—something we have always advocated for."*

For more information on CUPACLAD® visit www.cupapizarras.com/uk/rainscreen-cladding or to plan a visit to Material Source head to <https://bit.ly/3OaXlCw>





For more information visit <https://axter.co.uk>

2024 UK ROOFING AWARDS

“ THE 2023 AWARDS WERE A HUGE HIT. ”

100% OF GUESTS SAID THEY WOULD ATTEND AGAIN
AND
88% WOULD RECOMMEND IT TO OTHERS.

It's a great opportunity for networking—over 800 guests attended the 2023 awards.

Make sure you don't miss out on the roofing industry's premier event, celebrating the best of UK roofing across ALL disciplines.

FRIDAY 10 MAY 2024 | **InterContinental London—The O2**
GET YOUR TICKETS NOW!



SCAN QR CODE OR VISIT:
bit.ly/RA2024tix
FOR TICKETS

UK ROOFING AWARDS 2024



HEADLINE SPONSOR



