

ROOFING TIMES

ISSUE

11

WORKLOADS FOR CONTRACTORS STILL ON THE RISE, DESPITE CHALLENGES

NFRC's State of the Roofing Industry survey for Q2 of 2022 revealed that workloads continued to grow overall for roofing and cladding contractors, though firms had concerns about the impact of inflation on their business.

43 per cent of firms saw a rise in workload on the previous quarter, and only ten per cent reported a decline. This is similar to Q1's figures (47 per cent reported growth in workloads in Q1, eleven per cent reported decline), indicating that for now, an upward trajectory—seen consistently since this survey began in late 2020—has continued.

Enquiry growth was more modest, with a balance of two per cent of firms reporting increases, and 71 per cent of firms reported that they had concerns about their business viability linked to present inflationary pressures. This varied significantly on the sector level—while enquiries increased significantly in commercial work (36 per cent) and public non-residential RM&I (35 per cent), firms in the domestic RM&I sector were more likely to report a decline in orders.

Firms are still growing, however, with a balance of 17 per cent reporting that they had increased their direct employment since the first quarter of 2022. The use of sub-contracted labour also increased. Labour costs rose for a balance of 55 per cent of firms in the quarter, adding to existing cost pressures: 89 per cent of contractors paid more for materials in Q2.

UK ROOFING AWARDS 2023
Date announced plus find out how to enter your projects and buy tickets—SEE PAGE 11.



SURVEYING AT HEIGHT

Roof condition surveys are vital for assessing the current condition of a roof. However, there is currently a misconception that a roof condition survey does not need to comply with safe working practices.

HSE prosecutions due to working at height failures are common, and we are now seeing evidence of breaches of health and safety legislation where those surveying roofs do not appear to have implemented a safe system of work required under Work at Height (WAH) Regulations 2005.



Gary Walpole, NFRC's Safety, Health and Environmental Officer, provides a useful reminder as to why roof surveys do not fall outside the Working at Height Regulations.

Continued on page 2

WELCOME

I hope that you enjoy this edition of Roofing Times which provides some fantastic articles on products, services and case studies from NFRC's Supplier Members.

You'll also see that the date is set for the next UK Roofing Awards—12 May 2023. Preparations are already underway with entries being taken and ticket purchases now live. Thanks to all the sponsors who have already committed to supporting this fantastic event.

Enjoy reading.

Steve

Steve Laurence
National Account Manager—
Suppliers and Service Providers

SURVEYING AT HEIGHT

Working at height presents risks of serious injury and loss of life. The failure to manage these risks is often rooted in the failure to properly plan the work and choose the most appropriate equipment. Regulation 4 of WAH requires that work at height is properly planned, appropriately supervised, and carried out in a safe manner, so far as is reasonably practicable. The safe working method should be in writing and the amount of detail included should reflect the complexity of the survey.

If you or your client need more information on carrying out a roof survey, please scan the QR code to read NFRC Health & Safety Guidance Note (HSGS35) Client advice for arranging a roof survey, or contact the NFRC Helpdesk on 020 7638 7663 to speak to our Technical team.



SCAN QR CODE OR VISIT:
<https://bit.ly/3KCAEEL>

Continued

DRONE ROOF INSPECTIONS—WHEN TO USE THEM

For further information visit www.rooftestsandsurveys.co.uk

There is no substitution for carrying out a full roof condition survey, but it is not always practical to do so. When access to a roof is unsafe, using a drone can provide a cost-effective, quick, and safe means of carrying out an inspection.

There are several benefits to carrying out roof inspections via drone. Primarily, drone surveys provide a safe means of viewing inaccessible or fragile roofs. They are also significantly cheaper and quicker than traditional methods, such as erecting scaffolding or using MEWPs.

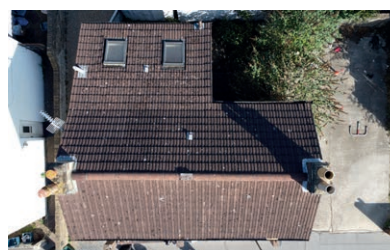
Drones will provide high-definition photographs and 4K videos of the roof and clear close ups of any defects. The footage can also be monitored on the ground on a remote screen held by the drone operator, so you can ensure that everyone is getting exactly the images that they require. These photographs and videos can be used for both roof inspections and for showcasing completed roofs on your website or social media.

Of course, drones are not perfect, and they cannot replace full roof condition surveys. It is not possible to carry out physical tests on the roof via drone, such as electronic integrity testing, taking core samples or probing laps.



Roof Tests & Surveys Ltd is both an NFRC-approved supplier, and a CAA-approved drone operator. This sets them apart from most drone operators

as they are capable of either simply providing photographs and videos, or also providing a comprehensive report to accompany them.



SAHTAS: ONLY THE BEST WILL DO



At a time when greater scrutiny is placed on the production processes employed by manufacturers and suppliers, Sahtas has taken great care to ensure that it exceeds all international standards.

In 2020 Sahtas became an accredited 'zero waste manufacturer' with nothing sent to landfill. Fired products which do not meet rigorous quality standards are crushed and added back into the production process.

Other materials, including glass, plastics, paper, sawdust and ash, are recycled and re-used.

Water is a very precious commodity and Sahtas obtains 50 per cent of its demand by harvesting rainwater. It also refines and purifies its waste water and re-uses it in the manufacturing process.

Sahtas owns its own clay reserves covering a 47 hectare site and has sufficient raw material for a further 60 years of continuous production. This area is certified and licensed to CED Environmental Effects Evaluation.

In order to reduce the impact of road transport it is now working with an international logistics partner to offer its customers deliveries directly from UK ports into their premises, bypassing the need for products to be brought into stock and then re-delivered and significantly reducing CO₂ emissions.

Sahtas also has a leading role in the sustainability of its management systems and, in particular, its employment practices. In a world where there is justifiable concern over slave labour and breaches of international employment laws, Sahtas has obtained



accreditation from Sedex, an international auditing service. All Sedex members are committed to operating within a responsible supply chain and adhering to ethical trading standards, including labour rights, care of the environment and sound business ethics.

For further information visit www.sahtas.com or call **01604 434909**.

WIENERBERGER AWARDED WITH GOLD STANDARD EXCELLENT EMPLOYER KITEMARK

WIENERBERGER, the UK's leading provider of wall, roof and landscaping innovations, has been awarded with the Gold Standard 'Excellent Employer' kitemark status for its apprenticeship programme.

The accreditation recognises manufacturers who are an exemplary employer of apprentices and is available to any UK engineering or manufacturing company that is running an engineering apprenticeship programme to overcome skills challenges.

Wienerberger formed part of the cohort of around 40 organisations which pursued the ground-breaking accreditation forming part of the Make UK-backed Engineering Apprenticeships: **Best Practice Programme from New Gen Makers**.

Simon Nevitt, Operations Director at Wienerberger UK and Ireland, said *"As a company we are passionate about developing and nurturing the next generation of engineers and are making considerable investment in a variety of ways to future build our business. The recent completion of our new Centre of Excellence training centre in Sandtoft is a perfect example of this commitment."*

Stephen Phipson, CEO at Make UK, commented: *"It's vital that would-be apprentices feel comfortable and confident when selecting an engineering employer who will give them the right support and training throughout their apprenticeship and beyond. This kitemark complements and builds on the programmes that Make UK and Next Gen Makers have already developed, which are key to helping place apprentices."*

The award ceremony took place on **National Manufacturing Day**, 7 July 2022, when **Wienerberger's Recruitment Adviser Karen Linton**, and **Engineering Training Manager Rob Jollands**, received their award from **Adam Tipper**, Managing Director of Next Gen Makers.

For more information, visit:

APPRENTICESHIP SCHEMES | WIENERBERGER

www.wienerberger.co.uk/about-us/working-for-us/apprenticeships.html





SIG BUILDS COMPLIANCE TEAM

SIG is investing in renewed focus on compliance and governance, appointing a Compliance Director and growing the specialist team which will manage and oversee issues of compliance through the supply chain.

Steve Marr, formerly Procurement Director at SIG, has taken up the role of Compliance Director, managing an internal team of eleven compliance specialists.

Under a new management team since 2020, the company is focusing on providing specialist product solutions. Doing so puts considerable onus on SIG staff to support procurement and installation decisions. It is therefore an absolute priority to ensure that they are in turn supported with the right level of accountability and governance to manage risk.

This function within SIG UK builds on work already carried out as part of SIG Assured, which focuses on ensuring that products supplied by SIG are legal and compliant to national UK standards.

The compliance team is taking this further, including aspects of sustainability (*notably Environmental Product Declarations*) and also working with the new Code for Construction Product Information.

Andy Williamson, Commercial Director of SIG, sees the new team as a natural part of the organisation's evolution. He said:

“ *The construction industry needed to change; at SIG we are looking to do our part by ensuring we're acting as a responsible supplier, sourcing and distributing products that are compliant, safe and appropriate.* **”**

This focus on compliance represents a significant investment for SIG and is one manifestation of the new direction for the organisation being driven by the management team.

For further information visit www.sigplc.com

SIDERISE JOINS NFRC

We are proud to become members of NFRC with our joint focus on promoting industry best practice and driving innovation.

As experts in passive fire protection for the façade, **SIDERISE** is pleased to have joined NFRC, supporting its calls for high technical quality and safety—especially in relation to fire performance.

External Affairs Director, Chris Hall, explains the significance:

“We have been developing, manufacturing, and supplying passive fire solutions globally for almost 50 years, and we are always searching for new opportunities to better understand the issues our customers face. We are eager to collaborate with others in the industry to collectively find new and better solutions to fire safety within the built environment.”

The influence NFRC has in our sector is profound, and we look forward to contributing to its ongoing efforts to raise industry standards and practice.”

For more information about Siderise, please visit: www.siderise.com



ACTIS HYBRID APPEARS AGAIN ON REMARKABLE RENOVATIONS

ACTIS HYBRID insulation has made its second appearance on one of George Clarke's popular Remarkable Renovations TV programmes—helping insulate a Northamptonshire village hall for a couple looking for a grand retirement project!

Architectural designer Stuart Ellis and his wife Theresa had been looking to downsize to a bungalow when they changed tack, bought a Victorian village school and decided to convert it into a dramatic, cosy, family friendly space.



KEY CONSIDERATIONS WHEN CHOOSING LADDERS FOR SAFE ROOFTOP ACCESS

When specifying a ladder to facilitate roof access, it is important to ensure you are choosing the correct system to meet your project's specific requirements.

This includes identifying the reason for access to the roof and the frequency of access required. It is also crucial to determine whether tools and equipment will need to be transferred through the access hatch, or solely roofing professionals.

BILCO UK's in-house design and engineering teams work closely with roofing contractors to manufacture special ladder applications that are custom-made to meet the project's specific requirements.

Maintaining floor space and ensuring walkways are kept clear is a common challenge when choosing ladders for roof

access, which is why fixed vertical retractable ladders, where the lower section of the ladder can be retracted when not required, is a popular and convenient choice.

When contractors need to travel across the roof for maintenance and access reasons, it can be a challenge to navigate the roof safely if there are potential trip hazards such as wires and ducting.

Bilco UK manufactures a range of aluminium stepovers that can be seamlessly fitted over obstructions to provide a stable hand-railed platform that enables individuals to get from one area of the roof to another safely and quickly. As the stepovers feature weighted big feet it eliminates any requirement for roof penetration, therefore avoiding any risk of leaks or drafts. Stepovers can be installed with either companionway steps or fixed vertical steps, depending on the available space on the roof.

For further information on Bilco UK's complete range of roof access solutions, visit www.bilcouk.co.uk or call 01284 701696.

Images courtesy of
Amazing Productions



Stuart brought in his namesake (*but no relation*) Actis Regional Sales Director, Steve Ellis, to help him specify the insulation.

The scheme saw Stuart and his builder son Jamie transform the double height building into a stunning home in just seven months while he and Theresa lived in a mobile home in the garden. The project had an added frisson—it needed to be completed before Jamie's wedding—a feat he achieved with just three days to spare!

Steve specified 367 m² of 50 mm and 33 m² of 105 mm honeycomb-style insulation Hybris, 180 m² of insulating vapour control layer H Control Hybrid and 225 m² of insulating breather membrane Boost R Hybrid Roof in the roof and walls of the existing property and the roof of the new build element. This achieved a U value of 0.18/m²K in both the extension and existing roof and 0.25/m²K in the walls of the original part of the property.

You can watch the episode of George Clarke's Remarkable Renovations, featuring this project at: <https://bit.ly/3qgioas>



NEW ADDITIONS TO AIRFLOW'S PRODUCT RANGE

AIRFLOW has launched two new additions to its already successful rafter roll panel range. By collaborating with customers, it has been able to improve its product range to meet the growing demand within the industry.

The new 900 mm and 1 m rafter roll panels (x 6 m) have been extremely well received, with a lot of interest and take up, not least because all Airflow's rafter roll panels are made from 100 per cent recycled material and are fully recyclable.

The new packaging also contains more, resulting in less wasted space on a pallet and fewer deliveries.

Airflow's broad selection of sizes, from 300 mm to 1 m, offers the widest range on the market to suit almost every situation.



The roll panel's flexibility makes it suitable for refurbishment, where rafter centres are uneven, or for use with thicker layers of insulation while maintaining a clear ventilation path from the eaves into the roof. The robust shape of the ribs also provides additional strength to ensure the ventilation remains unobstructed.

Airflow's rafter roll panels can be used in conjunction with eaves ventilation products. All roofing products are available as mixed pallet options.

Airflow is always looking to develop new products and continue to expand its operations. With several projects already lined up for 2023, Airflow is certain to be at the forefront of pioneering new solutions to everyday problems.

To view the full product range visit www.airflow-vent.co.uk or for more information and prices, contact sales@airflow-vent.co.uk or call **01425 611547**.

DELIVERING SOLUTIONS TO SUPPLY CHAIN CHALLENGES AT SOPREMA



More than two years after the first COVID-19 lockdown, the construction sector is still feeling the impact, when sites closed and building products production was paused.

When everything started back up the spike in demand, coupled with the hiatus in production, meant that stocks were never replenished by many manufacturers—and they are still playing catch-up, with raw material processing also struggling to catch up with demand, and logistics issues adding to the problem.

Now, with war in Ukraine exacerbating the problems, the impact on availability and prices is escalating.

Across the supply chain, it is clear that price rises have been substantial. And with continuing issues around reliability of supply and price inflation for raw materials, along with rising energy costs, it seems unlikely that there will be much respite.

At Soprema UK, there are several ways in which we've been able to help customers respond effectively to supply chain and cost issues.

As a global company, we have the buying power and manufacturing capacity to keep material costs lower, secure supplies and keep production at pre-pandemic levels, meaning excellent availability across the range.

Our focus on building envelope solutions means that we can offer multiple technologies and our technical expertise enables us to provide valuable advice to both specifiers and contractors on the most cost-effective solution for the project.

We are also working with customers to help them counter cost uncertainty by enabling them to fix a purchase price at the beginning of their project and pay for local storage, giving them peace of mind on availability.

For more information visit www.sopremauk.co.uk.

PLAN YOUR FINANCIAL NEEDS THROUGH CHAMELEON

CHAMELEON FINANCIAL PLANNING WISHES TO EXTEND AN EXCLUSIVE FREE CASH FLOW PLANNING CONSULTATION WORTH £950* TO NFRC MEMBERS.



CHAMELEON is a professional firm of independent financial planners providing holistic financial planning advice to individuals and businesses.

If you have ever found yourself pondering about any of the following, this consultation is perfect for you as it includes the following:

- **When can I realistically afford to retire?**
- **How would my family cope financially if anything was to happen to me?**
- **Am I going to be able to afford to do everything I want in retirement?**
- **How much money do I really need to accumulate up to retirement without running out of money?**

*Subject to availability.

- **How do my existing pensions fit in with my retirement plan?**
- **Is there anything more I should be doing now?**
- **When should I sell my business?**

A qualified Financial Planner at Chameleon can help show you what your financial future holds, taking into account a range of different scenarios tailored to your personal circumstances and objectives. They'll also look at what small changes can be made to help you realise your financial goals.

There is absolutely no cost to you and no obligation to become an active client of Chameleon.

If you would like to take advantage of this exclusive offer, please don't hesitate to give David Broom a call on **07305 117 296**, or email him at **david.broom@chameleonfp.co.uk**



David Broom, Head of Client Relations



EverRoof artificial green roof system has played a key role in restoring Tipperary's Cashel Palace to its former glory.

Mulcahy Construction has restored the hotel, its buildings and landscapes, which were reopened in March this year, its interiors upgraded with a nod to their original splendour.

And the rooftops of the six manor buildings have been transformed from grey to rich green after EverRoof installed 1,000 m² of

PRESTIGIOUS IRISH HOTEL RECEIVES VIBRANT EVERROOF® TREATMENT

EVR1 artificial green roof system. The EVR1 is a uniquely classified fire- and wind-tested system which creates an appealing, and safety-conscious, visual statement.

The project architect at Mulcahy contacted EverRoof, part of the Evergreens UK Group. After requesting samples, reviewing comprehensive system information, its safety features and the quote provided, a site inspection was conducted.

A seven-strong team and six-day project, work and deliveries were scheduled carefully to fit the overall construction programme.

“There was a clear vision, plan and great communications; ordering, delivery, installation was all A1. It was great to have such contractor confidence.”

Frankie Nolan,
Mulcahy Construction

“It was a pleasure to help transform these roof spaces with EverRoof, with breath-taking results and a stunning backdrop.”

Andy Driver,
Sales and Marketing Director, EverRoof

Delighted with the end result, performance and system durability, both contractor and hotel owner are pleased to have a more attractive aerial view, replacing the industrial look with a fine vibrant green flourish to this luxury hotel and spa.

For further information visit www.everroof.co.



APOLLO MANAGING DIRECTOR RETIRES



APOLLO, part of the global adhesive manufacturer HB Fuller, has announced that its Managing Director Ian Cornelius will be retiring after nearly three decades at the company.

Ralph Kussmann, HB Fuller's Managing Director for Construction Adhesives in EIMEA, will now lead this business in UK and Europe.

Having joined Apollo in 1994 as a sales professional, Ian worked his way up to Sales and Marketing Director in 2011 and played a pivotal role in leading the company growth. As Managing Director from 2015, Ian enhanced Apollo's strategic approach and significantly grew its business into a £40+ million business today.

More recently he played a key part in the acquisition by HB Fuller at the beginning of this year, starting a new growth chapter for the company which is celebrating 50 years of innovative products and strong customer relationships.

He said: *"It has been a truly incredible journey. I feel tremendously honoured and privileged to have had the opportunity to lead such a talented team and wonderful business."*

"I leave safe in the knowledge that under Ralph's care Apollo can only go from strength to strength."

Ralph Kussmann adds that *"Ian is a truly outstanding leader who has built a solid business and a high performing leadership team."*

"His ability to quickly solve problems and inspire others has played a pivotal role in Apollo's achievements. Ian has been instrumental in ensuring we continue the success story of Apollo's innovative technologies and superior technical expertise."

Moving forward, Ian will be supporting HB Fuller on a consultancy basis, and also embarking on other coaching and mentoring roles.

For more information visit apolloroofingsolutions.co.uk



STAYING AHEAD OF THE CURVE THROUGH RESEARCH AND DEVELOPMENT

Manufacturers must implement thorough research and development (R&D) before introducing solutions to the market. Nick King, Portfolio Manager at KLOBER, takes us through the process:

IDENTIFYING DEMAND

Market research can be gathered through customer communication and research analysis. Customer feedback can be an initial indicator for development. However, it is vital that meticulous research is conducted, before any action is taken.

PROJECT OUTLINES

Once an agreement is reached in principle, product potential can be understood through a logistical lens. A detailed marketing brief may be prepared by outlining budgets, capex costs, price points and margins. Then, it is critical to understand volumes and storage capacity.

QUALITY IN DESIGN

Klober implements extensive risk analysis and testing to provide quality assurance. A gated system is used in the form of a traffic-lighted document, whereby red risks are methodically highlighted. This is where testing is used to identify risks and so adjustments can be made to achieve amber or green criteria.

ORGANISING STORAGE

Following technical approval, the product must be systematically logged with codes and information such as weight and required pallet size. Before the point of sale, packaging requirements like box size and material should be considered. Klober places sustainability high on the agenda.

COMMUNICATION AND DELIVERY

Prior to launch, sales teams should be on board with the product's offerings and target market to ensure effective delivery. Then, departments from product management through to marketing must work closely together to ensure all stages are managed effectively.

For more information, please visit www.klober.co.uk.

BESPOKE PRODUCTS FROM ALUMASC WATER MANAGEMENT SOLUTIONS PROVIDE FINISHING TOUCHES AT WILLOW BANK

A range of products from Alumasc Water Management Solutions has been specified for a stylish and complex property conversion deep in the heart of rural Northamptonshire.

Willow Bank was originally part of the 1960s Ideal Homes exhibition and its conversion involved an extension of the existing property, to transform it into a contemporary five-bedroom home.

The unique project incorporated several products from the Skyline Architectural Aluminium range: coping, fascia, soffits, a range of Rainwater products including AX gutters and swaged downpipes, and a bespoke chimney cap.

James Cockburn, Architectural Technologist from The Harris Partnership, specified Alumasc for the project. He said:

“The client also wanted to create a feature of the chimney. Once we met Alumasc on site to show them the complex form and discuss the intentions, it was clear that the client’s vision could be achieved.

Keeping all elements with one company made it so much easier, which is why we chose Alumasc.

The Skyline Architectural Aluminium and Aluminium Rainwater ranges are available in a unique range of profiles and finishes. Made-to-order options are also available, making the range suitable for traditional

and modern buildings. All products within the Skyline and Rainwater ranges benefit from Alumasc’s BBA-approved polyester powder coating process.

For more information, contact AWMS on 01536 383810 or visit www.alumascwms.co.uk

TAILOR-MADE HIRE SOLUTION TO SUIT YOUR ROOFING BUSINESS



WOWNOW HIRE manages the sourcing, delivery and collection of all hire equipment you need on site across the UK and Ireland.

We understand that your clients want a fast, reliable service, which is what WowNow Hire can provide to you, covering a wide range of needs. With access to over five million hire products, we've got you covered nationwide with all the equipment that you need to get the job done.

Whether it is powered or manual access, plant hire, tool hire, temporary accommodation, power generation, waste disposal and more, we will co-ordinate all your hire needs, end-to-end, with a single point of contact.

- ✓ END-TO-END HIRE MANAGEMENT SERVICE
- ✓ CERTAINTY, RELIABILITY, EASE AND SPEED
- ✓ SHORT AND LONG-TERM HIRES WITH COMPLETE FLEXIBILITY
- ✓ NATIONWIDE HIRE—WITH A SINGLE POINT OF CONTACT
- ✓ UNRIVALLED KNOWLEDGE AND EXPERTISE

- ✓ WIDEST RANGE OF HIRE PRODUCTS—COST EFFICIENCY
- ✓ WORKING WITH YOUR DEADLINES—SPEEDY AND SMOOTH DELIVERIES.

Whether you are conducting pre-planned maintenance work or a reactive response for sudden roof damage, we can help your company take care of roofing and guttering work. Whatever your challenge, we will sort it out for you.

Speak to our expert hire team today on 01329 655 385, or 07897 733 220. Alternatively, email Tracey Dunn at Tracey.Dunn@wownowhire.co.uk

EJOT SECURES FM APPROVAL FOR SINGLE-PLY FLAT ROOFING FASTENERS

EJOT has added another significant quality standard to many of its flat roofing fastener and washer combinations by gaining approval from American testing institute, FM Global.

The internationally-recognised FM approval on a significant number of EJOT single ply flat roofing products corresponds with, and complements, the company's existing European Technical Approval (ETA), confirming the safety, reliability, and durability of the flat roofing product combinations.

Unlike the European assessments that focus on the individual product's performance capabilities, the FM approval process looks at the complete assembly by testing an entire roofing system—the fastener, substructure, insulation material and roof sheet.

The fastener/washer combinations approved include the EcoTek tube-washer with FBS-R fastener – popular for attaching membrane and insulation to concrete—and TKR/TKE fasteners with the HTK 2G 50 tube-washer, typically used for attaching insulation and a single layer waterproof membrane to a steel or plywood deck.

Successfully passing the rigorous FM Approvals Standard 4470 testing in various roofing membrane combinations gives these fastener/washer combinations additional certification to support the products and maintain their worldwide use in the flat roofing market.

This means EJOT can present greater flexibility and security for OEMs globally, with design data available in the FM Roofnav design database (www.roofnav.com) as well as within the ETA.

Contact technical support by emailing EJOT UK via info@ejot.co.uk or call 01977 687040.



EJOT fastener and washer combinations for single ply flat roofing which now hold FM approval.

NORTHERN IRELAND SUPPLIER MEMBER JOINS NFRC TEAM

NORTHSTONE MATERIALS is delighted to join NFRC as a Supplier Member in GB. It has a long association with NFRC, having been a founding member in Northern Ireland.

A CRH company, Northstone Materials was formed in 1964. CRH plc is a world-leading building materials business that manufactures and distributes a diverse range of building materials, products and solutions for use extensively in construction projects worldwide.

From its roof tile factory in Northern Ireland, it partners with developers, roofing contractors and roofing merchants across the UK and Ireland delivering on all types of projects, from one-off self-build projects to large scale housing developments, schools and commercial properties.

All roof tiles are manufactured to the latest European standard BS EN 490 within a recognised management system BS EN ISO 9001. All tiles carry the Kitemark for quality. A full range of roofing accessories is available to match the four available tile profiles, including a comprehensive range of dry fix solutions.

Trained and experienced technical representatives are on hand to support NFRC Members with free estimates, technical advice, samples and digitally produced fixing specifications to BS 5534:2014+A2:2018.

For further information call 028 7965 1317, email: sales@northstone-ni.com or visit www.northstonerooftiles-gb.com



ONDULINE LAUNCHES THE ONLY UK WATERPROOFING SYSTEM GUARANTEED 10° PITCH

ONDULINE, the lightweight roofing systems and waterproofing specialist, is delighted to announce the launch of its new and unique under-roof system, ISOLINE® LOW LINE—the only system in the UK to be BRE-tested and BBA-accredited to as low as 10°.



Designed specifically for use on low pitch roofs, this lightweight bituminous underlay sheeting has been rigorously tested and is proven to be at least three times less likely to leak compared to a traditional tile system.

With a corrugation height of just 24 mm, ISOLINE® LOW LINE is fixed below the primary tile or slate roof covering, acting as the primary waterproofing layer of a roof. Roof tiles become a secondary line of defence, enabling the pitch of the roof to be much lower than the minimum as recommended by the tile manufacturer.

Not only does this help to meet the demand for maximising living space, as the low pitch means the roof void can be minimised, it also enables traditional tiles to be used in situations where they would not have been able to be utilised previously, such as extensions or large roofing projects, greatly enhancing the aesthetic quality of a property.

For more information on the ISOLINE® LOW LINE roofing system, and Onduline's other lightweight, eco-friendly and durable roofing solutions, please visit www.onduline.co.uk.



ENTER THE 2023 UK ROOFING AWARDS NOW!

UK ROOFING AWARDS 2023



The 2023 UK Roofing Awards are taking place on Friday 12 May 2023 at InterContinental London–The O2. Entries are now open. Uniquely this time, we are accepting entries for projects that were completed within a two-year window between 1 January 2021 and 31 December 2022.

Tickets are also now available for purchase.



SCAN QR CODE OR VISIT: bit.ly/3e2f3cp FOR ENTRIES



SCAN QR CODE OR VISIT: bit.ly/3PRSAvC FOR TICKETS

HEADLINE SPONSOR



Here are FIVE good reasons to consider entering an award:

- 1 INCREASED CREDIBILITY**
 Highly regarded industry accolade, recognition of your company's skills and outstanding workmanship.
- 2 BENCHMARKING**
 Help raise your company profile, gaining a competitive edge.
- 3 FREE MARKETING**
 Shortlists and winners are showcased online and across industry newsletters and publications.
- 4 EMPLOYEE EXCELLENCE**
 Recognise the hard work and achievements of your employees, boosting staff morale.
- 5 NETWORKING**
 The highlight of the roofing events calendar celebrating the very best roofing projects.

ROOFINGAWARDS.CO.UK



MANUFACTURERS

A. Proctor Group Ltd

www.proctorgroup.com
www.proctorgroup.com
01250 872261
contact@proctorgroup.com

ACO Building Drainage

www.aco.co.uk/aco-building-drainage
www.aco.co.uk/aco-building-drainage
01462 816666
abdmarketing@aco.co.uk

Actis Insulation Ltd

www.insulation-actis.com
www.insulation-actis.com
01249 462888
solutions@insulation-actis.com

Airflow (Nicoll Ventilators) Limited

www.airflow-vent.co.uk
www.airflow-vent.co.uk
01425 611547
sales@airflow-vent.co.uk

Alumasc Building Products Ltd

www.alumascroofing.com
www.alumascroofing.com
01744 648 400
info@alumascroofing.com

Ampteam Ltd

www.ampteam.co.uk
www.ampteam.co.uk
01384 252777
unfold@ampteam.co.uk

Apollo Roofing Solutions

www.apolloroofingsolutions.co.uk
www.apolloroofingsolutions.co.uk
01827 54281
enquiries@apollooroofingsolutions.co.uk

Arbor Forest Products Ltd

www.arborforestproducts.co.uk
www.arborforestproducts.co.uk
01469 532300
sales@arborforestproducts.co.uk

Axter Ltd

www.axter.co.uk
www.axter.co.uk
01473 724056
info@axtertd.co.uk

Bauder Ltd

www.bauder.co.uk
www.bauder.co.uk
01473 257471
technical@bauder.co.uk

Bilco UK Ltd

www.bilco.co.uk
www.bilco.co.uk
01284 701696
bilco@bilco.com

Blackdown Greenroofs

www.blackdown.co.uk
www.blackdown.co.uk
01460 234582
enquiries@blackdown.co.uk

BMI UK & Ireland

www.bmigroup.com/uk
www.bmigroup.com/uk
01908 015760
sales.admin@bmigroup.com

Boulder Developments Ltd

www.superfoil.co.uk
www.superfoil.co.uk
01636 639900
technical@boulder.co.uk

Bove Draadproducten BV

www.bove-nl.nl
www.bove-nl.nl
00 31 486 411 868
jules@bove.eu

Breedon Group

www.breedongroup.com
www.breedongroup.com
028 92 647100
productsales@breedongroup.com

Brett Martin Ltd

www.brettmartin.com
www.brettmartin.com
024 7660 2022
daylight@brettmartin.com

Britannia Paints Ltd

www.britanniapaints.co.uk
www.britanniapaints.co.uk
01606 834015
sales@britanniapaints.co.uk

Building Innovation (EcoTherm Insulation (UK) Limited)

www.building-innovation.co.uk
www.building-innovation.co.uk
01926 888808
info@building-innovation.co.uk

CA Group Ltd

www.cagroup.co.uk
www.cagroup.co.uk
01388 834242
development@cagroup.co.uk

Carlisle Construction Materials Ltd

www.ccm-europe.com
www.ccm-europe.com
01 623 627285
info.uk@ccm-europe.com

Cedral

www.cedral.world/en-gb
www.cedral.world/en-gb
01283 501555
matthew.castles@etexgroup.com

Chesterfelt Ltd

www.chesterfelt.co.uk
www.chesterfelt.co.uk
01246 268000
general@chesterfelt.co.uk

CPI Mortars Ltd

www.cpieuromix.com
www.cpieuromix.com
01698 464110
enquiries@cpieuromix.com

Cromar Building Products Ltd

www.cromar.co.uk
www.cromar.co.uk
01977 663133
sales@cromar.co.uk

CUPA Pizarras S.A

www.cupapizarras.com/uk
www.cupapizarras.com/uk
020 3318 4455
uk@cupapizarras.com

Danosa UK Ltd

www.danosa.com
www.danosa.com
0845 074 0553
uksales@danosa.com

DuPont Tyvek

www.dupont.co.uk
www.dupont.co.uk
08444 068 722
tyvek.construction@dupont.com

Easy-Trim Roofing and Construction Products Ltd

www.easy-trim.co.uk
www.easy-trim.co.uk
0845 034 6008
sales@easy-trim.co.uk

Eco Green Roofs Ltd

www.egr.co.uk
www.egr.co.uk
01277 355705
info@egr.co.uk

Edilians (formerly Imerys Roof Tiles)

www.edilians.com
www.edilians.com
07818 043808
geoffrey.doran@edilians.com

EJOT UK Ltd

www.ejot.co.uk
www.ejot.co.uk
01977 687040
info@ejot.co.uk

Euroclad Group Ltd

www.eurocladgroup.com
www.eurocladgroup.com
02922 010101
enquiries@eurocladgroup.com

Evergreens UK Ltd

www.everroof.co.uk
www.everroof.co.uk
01572 766912
temi@evergreensuk.com

Evolution Fasteners (UK) Ltd

www.evolutionfasteners.co.uk
www.evolutionfasteners.co.uk
0141 647 7100
technical@evolutionfasteners.co.uk

Fakro GB Ltd

www.fakro.co.uk
www.fakro.co.uk
01283 554755
sales@fakrogb.com

Filon Products Ltd

www.filon.co.uk
www.filon.co.uk
01543 687300
sales@filon.co.uk

Firth Steels Ltd

www.firth-steels.co.uk
www.firth-steels.co.uk
01484 405940
info@firth-steels.co.uk

Flex-R Ltd

www.flex-r.co.uk
www.flex-r.co.uk
01494 448792
enq@flex-r.co.uk

Foamglas UK

www.foamglas.co.uk
www.foamglas.co.uk
0207 492 1731
info@foamglas.co.uk

Geco Waterproofing Systems

www.gecomembrane.com/en
www.gecomembrane.com/en
00 39 045 6616246
export@gecomembrane.com

Guttercrest Ltd

www.guttercrest.co.uk
www.guttercrest.co.uk
01691 663300
info@guttercrest.co.uk

H C Wraxall & Co Ltd

www.wraxalls.co.uk
www.wraxalls.co.uk
01797 322396
office@wraxalls.co.uk

Hambleside Danelaw Ltd

www.hambleside-danelaw.co.uk
www.hambleside-danelaw.co.uk
01327 701900
sales@hambleside-danelaw.co.uk

HD Sharman Ltd

www.hdsharman.co.uk
www.hdsharman.co.uk
01298 812371
info@hdsharman.co.uk

HS Butyl Ltd

www.hsbutyl.com
www.hsbutyl.com
01590 684000
sales@hsbutyl.com

ICB (Waterproofing) Ltd

www.icb.co.uk
www.icb.co.uk
01202 785200
info@icb.co.uk

IKO PLC

www.ikogroup.co.uk
www.ikogroup.co.uk
01527 255771
info@iko.com

InStar UK Ltd

www.instar-uk.co.uk
www.instar-uk.co.uk
01858 456949
info@instar-uk.co.uk

IPP Ltd

www.intpetro.com
www.intpetro.com
01621 776252
ollie@magply.co.uk

Jordeson Timber

www.jordeson.co.uk
www.jordeson.co.uk
01904 633351
office@jordeson.co.uk

Keylite Roof Windows

www.keylitteroofwindows.com
www.keylitteroofwindows.com
01283 200150
info@keyliteuk.com

Kingspan Insulation Ltd

www.kingspan.com
www.kingspan.com
01544 388 601
info@kingspaninsulation.co.uk

Kingspan Ltd

www.kingspan.com
www.kingspan.com
01351 706101
tony.ryan@kingspan.com

Klober Ltd

www.klober.co.uk
www.klober.co.uk
03306 780088
info@klober.co.uk

Kytun (UK) Ltd

www.kytun.com
www.kytun.com
01684 293702
info@kytun.com

Liquid Roofing Systems Ltd

www.lrs-systems.co.uk
www.lrs-systems.co.uk
01948 841 877
enquiries@lrs-systems.co.uk

Mannok Build Ltd

www.mannokbuild.com
www.mannokbuild.com
08000 322 122
sales@mannokbuild.com

Manthorpe Building Products

www.manthorpepb.co.uk
www.manthorpepb.co.uk
01773 303000
mbp.care@manthorpepb.co.uk

Marley Ltd

www.marley.co.uk
www.marley.co.uk
01283 722588
info@marley.co.uk

Metal Solutions Ltd

www.metalsolutions.co.uk
www.metalsolutions.co.uk
01204 491800
sales@metalsolutions.co.uk

Moy Materials (UK) Ltd

www.moymaterials.com
www.moymaterials.com
00 353 1 463 3900
info@moymaterials.com

Nordic Forest (UK) Ltd

www.nordicforest.co.uk
www.nordicforest.co.uk
0208 304 1016
andy@nordicforest.co.uk

Northstone NI Ltd - Materials Division

www.northstoneroofiles-gb.com
www.northstoneroofiles-gb.com
02870 321100
enquiries@northstone-ni.com

Onduline

www.onduline.com/en
www.onduline.com/en
0207 727 0533
enquiries@onduline.net

Paslode Spit (ITW Construction Products)

www.itwcp.co.uk
www.itwcp.co.uk
0800 833 381
PO-CS@itwcp.com

Permavent Ltd

www.permavent.co.uk
www.permavent.co.uk
01305 766703
enquiries@permavent.co.uk

Pizarras Samaca, S.A.U

www.samaca.com
www.samaca.com
00 34 988 335 555
samaca@samaca.com

Polyfoam XPS Ltd

www.polyfoamxps.co.uk
www.polyfoamxps.co.uk
01429 855100
info@polyfoamxps.co.uk

Polyglass GB Ltd

www.polyglass.com
www.polyglass.com
01902 637422
info@polyglass-gb.com

Polyroof Products Ltd

www.polyroof.co.uk
www.polyroof.co.uk
01352 735135
admin@polyroof.co.uk

PREFA UK LTD

uk.prefa.com
uk.prefa.com
020 7795 8124
office.uk@prefa.com

Premier Sealant Systems Ltd

www.premiseal.co.uk
www.premiseal.co.uk
01724 864100
sales@premiseal.co.uk

Protan (UK) Ltd

www.protan.co.uk
www.protan.co.uk
01925 658 001
sales@protan.co.uk

Proteus Waterproofing

www.proteuswaterproofing.co.uk
www.proteuswaterproofing.co.uk
01268 777871
enquiries@proteuswaterproofing.co.uk

Radmat Building Products Ltd

www.radmat.com
www.radmat.com
01858 410372
techenquiries@radmat.com

Recticel Insulation UK Ltd

www.recticelinsulation.com
www.recticelinsulation.com
01782 590470
technicalservices@recticel.com

Remix Dry Mortar Ltd

www.remixdrymortar.co.uk
www.remixdrymortar.co.uk
01329 231200
info@remixdrymortar.co.uk

Restec Roofing Ltd

www.restecroofing.co.uk
www.restecroofing.co.uk
0845 4504 193
enquiries@restecroofing.co.uk

Rockwool Ltd

www.rockwool.co.uk
www.rockwool.co.uk
01656 868 490
info@rockwool.com

Rose Roofing Ltd

www.rose-roofing.co.uk
www.rose-roofing.co.uk
01977 516044
sales@rose-roofing.co.uk

Rubber4Roofs Ltd

www.rubber4roofs.co.uk
www.rubber4roofs.co.uk
0800 313 4486
office@rubber4roofs.co.uk

S R Timber Ltd

www.sr-timber.co.uk
www.sr-timber.co.uk
01623 446800
sales@sr-timber.co.uk

Safab Ltd

www.safabtd.co.uk
www.safabtd.co.uk
0141 954 1119
sales@safab.co.uk

Sahtas UK Ltd

www.sahtas.co.uk
www.sahtas.co.uk
01604 434909
sahtasuk@sahtas.com

SFS Group Fastening Technology Ltd

www.sfs.com
www.sfs.com
0330 0555 888
ukenquiries@sfs.com

Shield Membranes

www.shieldmembranes.com
www.shieldmembranes.com
020 7740 9279
info@shieldmembranes.com

Siderise Insulation Limited

www.siderise.com
www.siderise.com
01656 730833
Helen.massay@siderise.com

Sievert UK

www.sievert.se
www.sievert.se
01536 310300
sales@rothenberger.co.uk

Sika Limited

www.gbr.sika.com
www.gbr.sika.com
01707 394444
enquiries@uk.sika.com

Sky Garden Greenroofs Ltd

www.sky-garden.co.uk
www.sky-garden.co.uk
01242 620905
enquiries@sky-garden.co.uk

Skyline Architectural Aluminium c/o Alumasc Water Management Systems

www.alumascwms.co.uk/brands/skyline/
www.alumascwms.co.uk/brands/skyline/
01536 383810
info@alumascwms.co.uk

Soprema UK

www.soprema.co.uk
www.soprema.co.uk
0330 058 0668
info@soprema.co.uk

Sotech

www.sotech-optima.co.uk
www.sotech-optima.co.uk
07850 089210
technical@sotech-optima.co.uk

Sundolitt Ltd

www.sundolitt.com
www.sundolitt.com
01786 471586
enquiries@sundolitt.com

Surespan Ltd

www.surespancovers.com
www.surespancovers.com
01922 711185
sales@surespancovers.com

The Garland Company UK Ltd

www.garlanduktd.co.uk
www.garlanduktd.co.uk
01174 401050
info@garlanduktd.co.uk

Thysis Building Products Ltd

www.thisis.co.uk
www.thisis.co.uk
01759 377233
sales@thisis.co.uk

TN International

www.tnroofingsystems.com
www.tnroofingsystems.com
01786 451170
customerservice-uk@tn-i.com

Topseal Systems Ltd

www.topseal.co.uk
www.topseal.co.uk
01423 886 495
enquiries@topseal.co.uk