

ROOFING TIMES

ISSUE

30



PROTEKTOR WEMICO MARKS UK ROOFING DEBUT WITH WEST TEMPLE SHEEN PROJECT FILM

**IN THIS
ISSUE**

WIENERBERGER
OPENS NEW
TILE FACTORY

SOLFIT'S PORTRAIT
ROOF-INTEGRATED
PANELS

RENOLIT'S
NEW TRAINING
CENTRE

PROTEKTOR
WEMICO'S
PROJECT FILM

£15BN WARM HOMES PLAN REVEALED, UNLEASHING 'ROOFTOP REVOLUTION'



by GRAY GIBSON, NFRC Policy Officer

You've no doubt heard that the government has published its long-awaited £15 billion Warm Homes Plan (WHP), aimed at accelerating energy upgrades across the UK's housing stock. Rooftop solar is a central part of the plan, with senior ministers describing a coming "rooftop revolution" that will drive a major increase in domestic installations.

FOR BUSINESSES LIKE YOURS, THIS MATTERS.

Solar will increasingly sit alongside core roof work. If clients are operating sensibly, this will drive demand for roof surveys, remedial works and solar-ready detailing. The WHP will also soon be reinforced by the Future Homes Standard, which the government claims will be implemented in early 2026 and is widely expected to mandate solar on 40 per cent of the floorplan of new homes.

WHERE IS THE FUNDING GOING?

Of the £15bn total, £1.5bn will be allocated to Scotland, Wales and Northern Ireland, with decisions on delivery taken by devolved administrations and more details still to come.

The remaining £13.5bn in England will be spread across five main routes:

- £5bn for home upgrades for low-income households, including insulation, solar, batteries and heat pumps
- £2bn in low-cost loans
- £2.7bn for the Boiler Upgrade Scheme, offering £7,500 grants for heat pumps
- £1.1bn for low-carbon heat networks
- £2.7bn for Warm Homes Fund finance, including green mortgages

The government says the Plan will help bring up to one million families out of fuel poverty, including through free packages of upgrades that could support street-by-street delivery in social housing. Mayors will also be given a stronger role in shaping local delivery. NFRC Trade Members with trusted local relationships will be well placed to access work as these programmes are rolled out.

Make sure that your company is on the radar for consideration for future work. Ensure that you are taking advantage of the free awareness campaign resources available on the NFRC website by scanning the QR code, to help elevate your company credibility by being an NFRC Member.



SOLAR MUST BE SAFE, COMPETENT AND ROOF-LED

NFRC is eager to see the Warm Homes Plan succeed, but there are clear questions we are still awaiting answers on around the actual delivery of it.

The recent rise in solar installations has exposed clear weaknesses which could worsen under the WHP. With over 1.6 million

UK homes now benefiting from solar and 257,000 small-scale installations last year, fire safety concerns are emerging. Research published by insurers QBE last year shows the rate of solar PV fires is rising at twice the rate of installations, with poor workmanship often a factor. NFRC Members are increasingly carrying out remedial works where solar installations have compromised roof waterproofing or cracked slates, and inadequate pre-installation assessments are resulting in roofs failing well before solar systems.

Timelines for the plan's roll out also remain uncertain, particularly with ECO4 ending on 31 March, and the sector needs clarity on the specifics of programmes.

NFRC will be seeking answers to the following questions:

- Whether roof and fabric condition assessments will be mandatory before installation?
- Whether skills, training and supply chains can expand quickly enough?
- How fast finance products will reach households and drive demand at scale?

The WHP will likely be the biggest ever driver of rooftop solar work. Solar will soon be the norm on new roofs and increasingly common on existing ones. Now is a good time to explore options to help ensure your roofing competence is at the centre of delivering quality work and ensure your business is aligned with future demand.

Take a look at short duration courses offered through NFRC Supplier Members by scanning the QR Code.



SKILLBUILD 2026: REGISTRATIONS OPEN NOW!

The countdown for the UK's biggest and longest-running construction skills competition is on! NFRC is calling on Members and Training Providers to put their rising talent forward to compete in the regional qualifiers for SkillBuild 2026.

Enter before 20 February by scanning the QR code.





UK ROOFING AWARDS 2026

NFRC

2026 UK ROOFING AWARDS

The 2026 UK Roofing Awards nominations are now closed with shortlisted entries announcements due out mid - late March.



Tickets for the awards ceremony on 8 May 2026 can be purchased at <https://bit.ly/Attend2026> or by scanning the QR code.

Sponsorship opportunities are already selling fast, but if you are interested in your brand being part of the big day, please get in touch with Steve (stevelaurence@nfrf.co.uk) or Rose (rosefigg@nfrf.co.uk).

Thank you to our sponsors



Headline sponsor



Drinks reception and after party sponsor



ANOTHER REASON TO ATTEND THE UK ROOFING AWARDS



CELEBRATE EXCELLENCE

Come along to this premier event celebrating the highest standards of safety, complexity, and craftsmanship in roofing, whilst enjoying the opportunity to connect with people across the roofing supply chain.

LATEST NFRC TECHNICAL DOCUMENTS

Don't forget all of our technical documents are available online free of charge to members at: nfrf.co.uk/knowledge

LATEST DOCUMENTS AND UPDATES INCLUDE:

Project Case Study PCS03
Overlaying an Asbestos Cement Roof

Guidance Note GN67 Lap Vents in Pitched Roofs

Knowing Your Limits A Practical Guide for Safer Decisions

UPDATED PUBLICATIONS

NFRC Technical Guidance Note for the design and construction of Blue Roofs has been extensively updated to align with the CIRIA Blue Roof Guidance and the latest edition of BS 6229:2025.

Main contacts of Member companies can also view and download copies of the main roofing related BSI standards from:

www.nfrf.co.uk/BSI-stds or scan the QR code.



(Remember you need to login to view them free of charge!)

NEW MEMBER BENEFIT



As a vetted and inspected member of NFRC, you can now benefit from a ten per cent discount on your insurance requirements which we have negotiated on your behalf with some of our insurance Service Provider members.

When we presented NFRC member recruitment process, inspection regime and your accident statistics to several insurance providers, they agreed that NFRC members represented less of a risk to insurance companies.

We would urge all members, when renewing your insurance, to arrange a full review of your risks and to complete your due diligence with your chosen provider.

Read on to find more information about the insurance benefits available later in this issue.

DATES FOR THE DIARY



9 - 15 FEBRUARY
National Apprenticeship Week

28 FEBRUARY
NFRC's Scottish Dinner Dance

LATE FEBRUARY
2025 Winter State of Industry Report due out

2 - 6 MARCH
Scottish Apprenticeship Week

26 MARCH
NFRC's South West Members Day and AGM

31 MARCH
2026 SkillBuild qualifier: Dundee and Angus College.

More information is available at nfrf.co.uk/events

WIENERBERGER UK & IRELAND OPENS NEW STATE-OF-THE-ART SMEED DEAN CONCRETE TILE FACTORY

wienerberger UK & Ireland, a provider of innovative solutions for the entire building envelope, has opened Smeed Dean—its first concrete tile factory in the South of England.

The 7,800 m² state-of-the-art production facility in Sittingbourne, Kent, will produce up to 94 million roof tiles annually, enough for 32,000 semi-detached homes.

This significant milestone demonstrates wienerberger's ongoing commitment to low-carbon construction, regional investment and advanced concrete tile production. Manufacturing Danum TLE large-format concrete tiles and plain concrete tiles on two production lines, the factory complements existing sites in the north and reduces average transport distance in the south by more than 200 miles.

Keith Barker, wienerberger's Chief Operating Officer, said: *"Launching Smeed Dean is about more than expanding our national manufacturing footprint—it's about building for what's next."*

"Increasing production capacity in the south and investing in decarbonised operations have been key priorities, so it's extremely rewarding to see these cutting-edge production lines up and running to deliver products to support the UK's evolving housing needs."

The site is wienerberger's first fully-electrified concrete tile facility, with renewable energy and sustainability embedded throughout its operations—including smart lighting, heat recovery systems, a 10,000 litre rainwater harvesting system, and working with The Pallet LOOP to minimise pallet wood waste.

The Smeed Dean brickworks site's highly skilled team completed extensive training to support advanced and sustainable concrete tile production.

Through wienerberger's commitment to social responsibility, a portion of proceeds from sales of the Danum TLE tile supports the Emmaus charity in combatting homelessness and social exclusion.

For more information please visit www.wienerberger.co.uk.



UNDERSTANDING QANW ROOFING INSURANCE-BACKED GUARANTEES

When homeowners invest in a new roof, long-term protection is just as important as quality workmanship. QANW's insurance-backed guarantees (IBGs) provide this extra reassurance by safeguarding customers if their roofing contractor ceases trading after completing the work.

A QANW IBG activates only when a valid workmanship guarantee exists, but the original installer is no longer trading and therefore unable to honour the guarantee. If a fault arises within the guarantee period and falls under the terms, the policy can cover the cost of remedial work, ensuring the homeowner isn't left paying for issues that should have been resolved by the contractor. This makes IBGs particularly valuable in an industry where smaller firms may change ownership or cease trading.

Roofing contractors who offer QANW IBGs demonstrate professionalism and a commitment to consumer protection. Customers benefit from transparent



Join QANW today at qanw-members.co.uk/sign-up and use code **FREE** to avoid any vetting fees!.

documentation, straightforward claims processes, and the knowledge that their investment is protected even in unexpected circumstances. For contractors, providing an IBG helps build trust, enhances credibility and offers a competitive edge.

QANW is recognised across the UK for helping contractors meet compliance requirements and its fair assessment of claims. This reputation makes QANW IBGs a reliable choice for anyone undertaking replacements or major roofing projects.



ANOTHER REASON TO ATTEND THE UK ROOFING AWARDS

BENCHMARKING
Help raise your company profile, gaining a competitive edge.



DESIGNED BY INSTALLERS FOR INSTALLERS: SOLFIT INTRODUCES PORTRAIT ROOF-INTEGRATED PANELS



With integrated solar now a standard part of roofing specifications, UK manufacturer SOLFIT LTD has expanded its range with new 425 Wp and 435 Wp portrait-orientated roof-integrated panels.

These complement the company's established landscape formats used across domestic in-roof and commercial over-clad projects.

Solfit is an independently-owned UK business that designs and manufactures its systems domestically, with over 90 per cent of component parts produced in the UK. Founded in 2016, the company has supplied tens of thousands of panels nationwide.

The new portrait panels follow Solfit's installer-led development approach, shaped by experienced solar professionals to address common challenges around fitting speed, roof layout and system complexity. This philosophy is captured in the guiding principle *'Designed by installers for installers'*.

Ewen Estill, Managing Director of Solfit Ltd, said: *"Our approved installers and roofing contractors love working with Solfit. It's built on more than 20 years of hands-on installation experience. The system is versatile, straightforward and robust, with no fiddly parts, seals or brittle plastic mountings."*

The panels use an all-metal interlocking frame with fewer components than many in-roof systems, enabling faster installation and easier co-ordination with other trades. The portrait format offers greater flexibility on modern roof designs where space is limited but higher outputs are required.

Solfit panels are BROOF(t4)-certified for domestic in-roof use and can also form a watertight commercial over-clad solution, removing the need for another top sheet in these locations. Constructed with dual-glass laminate and a fully-metal frame, the panels combine durability with a sleek, low-profile, all-black finish.

For more information please visit www.solfit.co.uk.

In essence, a QANW insurance-backed guarantee adds a valuable safety net. The homeowner gains peace of mind, and the contractor shows confidence in their workmanship, creating a more secure roofing experience for everyone involved.



PREMIERLINE ANNOUNCES NFRC MEMBERSHIP AS A SERVICE PROVIDER

With over 20 years' experience in arranging insurance for the construction industry, PREMIERLINE has developed specialist knowledge of the roofing sector.

It understands the day-to-day risks contractors face, from working at height and managing complex projects to meeting tight deadlines. Its personalised approach ensures you get the insurance cover that's right for your business, with no gaps, no surprises and complete peace of mind.

As a member of NFRC you are entitled to a free, no-obligation insurance review through Premierline which can provide peace of mind that your insurance is fit for purpose. You can also receive an automatic ten per cent discount on your insurance premium.

Premierline offers NFRC members access to market-leading roofing insurance packages with unbeatable benefits, some of which may include:

NO HEIGHT LIMIT ON COVER

TEN PER CENT DISCOUNT FOR NFRC MEMBERS

FREE COVER ADD-ONS FOR RISKS OVER £10K PREMIUM:

- £1million Directors and Officers cover
- £100,000 corporate entity
- Free £250,000 legal expenses cover for risks over £10,000 GWP (*if your premium is under £10,000 you'll still receive one of these benefits at no extra cost*)

FREE HEALTH AND SAFETY AND ONLINE RISK MANAGEMENT TOOLS

OPTIONAL THREE-YEAR RATE GUARANTEE FOR LONG-TERM PRICE STABILITY

For a free, no-obligation insurance review please call a Premierline expert today on **0330 102 6170**.



ANOTHER REASON TO ATTEND THE UK ROOFING AWARDS

FREE MARKETING

Shortlists and winners are showcased online and across industry newsletters and publications.



COLLABORATION IN CAERPHILLY DELIVERS SUCCESSFUL GREEN ROOF PROJECT



Teamwork makes the dream work—and that was exactly the case for a large-scale green roof installation posing complex logistical challenges.

With more than 1,200 m² of green roofing needing to be delivered in a timely manner for the new-build factory extension in south Wales, close collaboration was required between all parties involved.

Market-leading green roof manufacturer **WALLBARN**, working closely with roof membrane supplier Polyroof and installation company Haran Roofing, devised a plan to deliver some 5,000 units of its award-winning M-Tray modular green roof system over four weeks, with batches arriving on site on a 'just in time' basis to meet strict installation timelines.

Wallbarn's logistics team in Croydon maintained close contact with the site and the

transport team moving the M-Tray modules 110 miles from Wallbarn's growing nursery in Hampshire to ensure every stage of the project ran smoothly and without delay.

FIRE COMPLIANCE

The green roof system was initially specified as a roll-out green roof. However, following concerns raised by the architect about fire safety compliance, the specification was changed to Wallbarn's M-Tray, which has passed rigorous physical fire testing and is fully certified to BROOF(t4) standard.

Wallbarn Director Julian Thurbin said: **"This assurance provided the confidence to revise the specification in favour of M-Tray, offering the client not only safety but also speed, flexibility and long-term value.**

"The installation demonstrates how M-Tray can meet demanding technical, logistical and fire safety requirements on complex roofing projects."

M-Tray also delivered practical benefits—each tray can be lifted individually for maintenance needs.

For further information please visit www.wallbarn.com.

ARE PITCHED ROOF UNDERLAYS 'EASY TO INSTALL'?



The marketing of pitched roof underlays should avoid the phrase 'easy to install', which is subjective and varies by experience.

Roofing is a skilled trade, and the term can wrongly suggest that an underlay can be fitted without expertise. For this reason, the Code for Construction Product Information (CCPI) lists it among phrases to avoid. However, products can still highlight features that make them practical and user-friendly for professionals.

A case in point is the re-roofing of St Mary's Barton in Headington, Oxfordshire. Built in 1958 by noted architect NF Cachemaille-Day, the church holds architectural significance, so repairs required careful specification. Speakman Roofing, contracted for the project, selected Proctor Air® as the preferred underlay.

Director Andrew Speakman said: **"We use Proctor Air on nearly every project. It's cost effective because one product covers all eventualities. More importantly,**

our installers like using it—it gets all the little things right."

Installer feedback plays a vital role in product perception. As **A. PROCTOR GROUP's** Will Jones explained on the Proctor Podcast, certification shows a product performs as claimed, but **"you can't appreciate it until you've tried and tested it in the field."** Feedback informs manufacturers, prevents product rejection and influences future specifications.

Proctor Air® is valued for being lightweight yet strong, supporting safe installation. Beyond usability, it delivers technical performance: high air permeability and low vapour resistance, reducing condensation risk and avoiding roof vents—a key advantage for heritage projects like St Mary's Barton.

For more information on Proctor Air® please call the Technical Support Team on 01250 872261 or visit www.proctorgroup.com/products/proctor-air.



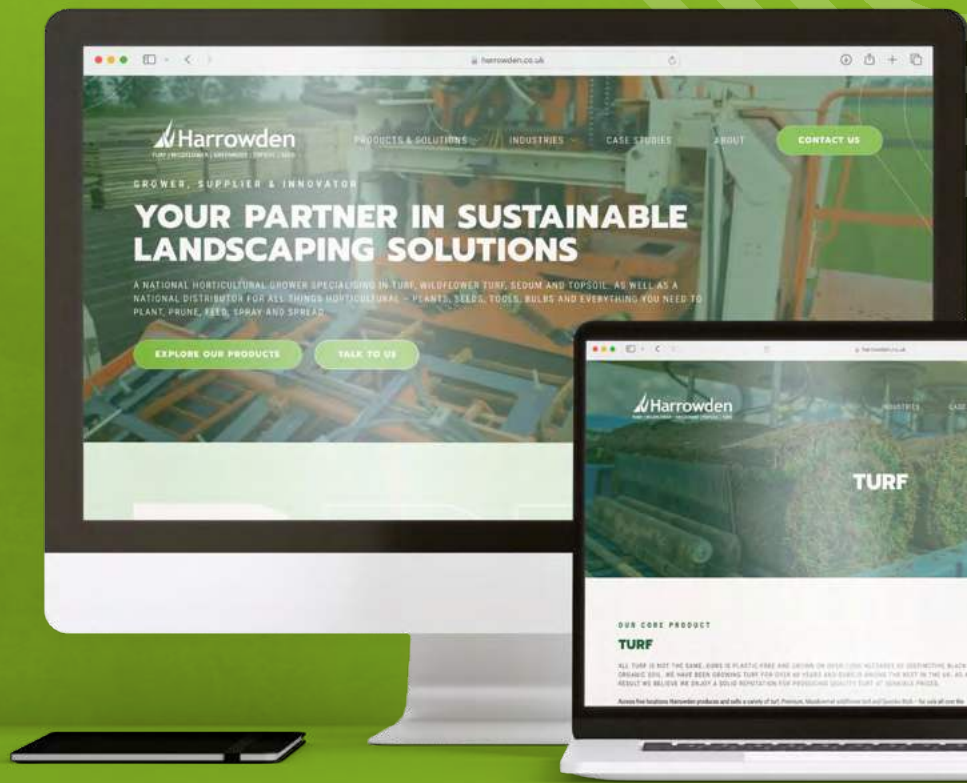
HARROWDEN LAUNCHES ITS NEW WEBSITE

HARROWDEN has recently launched a new website—Your Partner in Sustainable Landscaping Solutions—which includes the detail around green roofs and the real difference that Harrowden brings to the sector.

The site has been completely designed and developed in-house and presents a much more developed picture of the Harrowden business. It explains where it has come from, its core values and the key areas where a national grower of turf, sedum, and wildflowers can bring real advantages for customers across landscaping and both extensive and lightweight green roofs.

Customers and users have been the focus from day one and the site is already enjoying over 4,000 visitors every month. Not only does it give an overview of the full range of Harrowden products, but the website also features customer testimonials, case studies, and accreditations.

The case studies range from restorations of historic buildings to Iron Age roundhouses, major developments with household names, and projects with key UK housebuilders.



For more information please visit the new website at www.harrowden.co.uk and see how Harrowden can help you if you are already involved with green roofs, or how you can get started if you are new to them.

METAL SOLUTIONS LAUNCHES NATIONWIDE TECHNICAL WORKSHOPS FOR GREENCOAT® PLX

METAL SOLUTIONS has announced a new national initiative designed to bring expert product training directly to roofing teams across the UK.

Responding to strong demand from installers, the company will now deploy its technical experts, Bjorn Pramborg and Paul Thomson. Presenters deliver free GreenCoat® PLX technical workshops at customers' premises, or on request at the Metal Solutions seminar rooms in Bolton or Glasgow. The programme aims to enhance industry skills, improve installation quality, and support roofers as they transition toward more sustainable materials.

The on-site workshop offers a rare opportunity for hands-on learning with some of the sector's most respected specialists. Attendees are guided through practical demonstrations, including preparing and executing flawless solder joints—an essential technique for achieving the high standard associated with GreenCoat® PLX Pural Colorful Steel.

Alongside demonstrations, presenters will provide installation tips, best-practice advice, and an open forum for participants to discuss their own workflows, challenges, and project requirements.

A core focus of the initiative is to help roofing teams understand the performance advantages and sustainability credentials of GreenCoat® PLX. As demand grows for alternatives to traditional roofing materials, the workshop is poised to support companies looking to elevate quality while reducing environmental impact.

The session also introduces Metal Solutions' PLX Partner Program, offering exclusive rewards and benefits for installers working with GreenCoat® PLX.



Beyond materials, participants will discover the wider support available from Metal Solutions, including specialist fabrication services, tooling, and machinery.

With its craftsman-to-craftsman approach, the new workshop programme promises to strengthen industry knowledge and help roofers deliver better, more efficient installations nationwide.

DON & LOW LAUNCHES UK-MADE ROOFING ACCESSORIES RANGE



DON & LOW, the UK's only vertically-integrated construction membrane manufacturer, has launched a new line of roofing accessories, offering a complete solution for pitched roof applications.

Designed to complement flagship membranes such as Roofshield®, RoofTX® and MultiTX®, the new Don & Low roofing accessories range includes eaves protection, dry fix systems, tile vents, and GRP valleys and bonding strips. Manufactured in the UK, each product meets relevant British Standards (BS 5250, BS 5534, BS 8612) and has been independently tested by the BRE for quality, safety, and long-term performance.

From ventilation to weathering and airtightness, the accessories are engineered for seamless integration—helping contractors simplify installation while giving merchants a compatible, warranty-backed range from a single supplier. All accessory products come with a 15-year durability warranty.

Will Campbell, Head of Sales, said: *"This strategic expansion positions Don & Low as a true one-stop shop for pitched roofing."*

"Roofers now have access to fully-compatible components that perform together and help keep projects on track."

For more information or technical guidance please call Don & Low's Construction Technical Services team on **0808 169 4444** or email membranes@donlow.co.uk.

GREENCOAT®
COLORFUL STEEL

TECHNICAL
WORKSHOPS
&
PLX Partner Program

Metal Solutions

Bjorn Pramborg
Paul Thomson

To request a GreenCoat® PLX technical workshop please visit www.metalsolutions.uk.com/greencoat-plx-workshop/.

BARN CONVERTER LOVES HIS FIRST FORAY INTO THREE-PART ACTIS SYSTEM

A Dorset-based business consultant with a raft of building conversions under his belt is converting a barn for his family to live in—and loving his first foray into the ACTIS Hybrid range.

Arjen Westerdijk began work on converting the 500 m² barn in north Dorset in 2024, with the aim of completing the project in early 2026.

Arjen, despite not being a professional builder, has completed several renovations over the years, including converting listed buildings.

He said: *“I chose Actis because of its performance credentials, ease of working, and because it offers the complete insulation package. It is quite straightforward to install, even for someone who is not a construction professional.”*

Arjen is using a combination of 90 mm and 105 mm honeycomb-structured Hybris to create a total 195 mm thickness in the roof, 105 mm Hybris in the walls, insulating vapour control layer H Control Hybrid in the roof and internally in the walls, insulating breather membrane Boost R Hybrid Roof on the roof, and Boost R Hybrid in the walls.

This should see U-values of 0.11 W/m²K in the roof and 0.15 W/m²K in the walls.

With 500 m² of accommodation between the main home and the annexe, that is a lot of Actis: 1,200 m² of 105 mm Hybris, 700 m² of 90 mm Hybris, 800 m² of Boost R Hybrid Roof, 600 m² of Boost R Hybrid and 1400 m² of H Control Hybrid.

“It’s quick, easy to use, clean and thermally efficient,” added Arjen.

For more information on Actis products please visit www.insulation-actis.com.



Arjen Westerdijk's 500 m² barn conversion in North Dorset, due for completion in early 2026, uses a three-part complete Actis Hybris system

SKYLINE ROOFING CENTRES—SOLE DISTRIBUTOR OF CUPACLAD IN LONDON

SKYLINE ROOFING CENTRES is proud to be the sole distributor of **CUPACLAD**—the natural slate rainscreen cladding re-defining modern façade design—in London.

CUPACLAD is a hybrid between traditional slate roofing and contemporary cladding, developed to meet the demand for sustainable, efficient construction. It combines natural slates with horizontal aluminium rails, both of which are BBA-approved, to create a ventilated and durable façade. It is intuitive to install and suitable for trained cladding installers or roofers.

Natural slate is rated A1 Non-Combustible, the highest classification under EN 13501-1, while the aluminium rails are rated A2—meaning it can form part of a non-combustible system when installed in conjunction with other non-combustible materials.

CUPACLAD will perform effectively as an external cladding with a service life in excess of 35 years.

Please visit www.skylinerroofing.co.uk to locate your nearest branch.

KEY ADVANTAGES ARE:

- Contemporary design
- Lightweight and versatile
- Highly efficient ventilated façade
- Compatible with insulation systems
- Sustainable and durable
- Minimal maintenance
- Quick, simple installation by trained installers

With over 50 years of experience, Skyline Roofing Centres is a trusted supplier to both trade and public customers. With twelve branches across London and the M25, reliability, expert advice and prompt delivery are guaranteed—on time, every time.





CUPACLAD
NATURAL SLATE RAINSCREEN CLADDING SYSTEM

- EFFICIENT AND EASY TO INSTALL SYSTEM
- NON-COMBUSTIBLE CLASSIFIED AT
- BBA CERTIFIED
- WOODEN FINISH
- SUSTAINABLE 100 YEAR LIFE SPAN

ANOTHER REASON TO ATTEND THE UK ROOFING AWARDS

EMPLOYEE EXCELLENCE

Recognise the hard work and achievements of your employees, boosting staff morale.



NEW MANAGING DIRECTOR IS APPOINTED AT SWISSPEARL UK AND IRELAND

Mike Norton has been appointed the new Managing Director at **SWISSPEARL UK AND IRELAND.**

Mike said: *"Swisspearl's breadth and range of quality products really excite me.*

"It has a wide variety of fibre cement products made across the whole of Europe, and is also known for quality and innovation, with the largest palette of colours on its Façade range, supported with a beautiful Plank cladding range."

He went on to say that for farmers, Swisspearl's corrugated sheets can stand up to the worst storms UK and Ireland can throw at it, while for roofers, housebuilders and merchants, its Slate range has been a brand of choice for over 20 years.

He said: *"2026 sees new colours, new textures and new products all adding to the portfolio which represent an exciting step forward into the New Year!"*

SWISSPEARL SUPPORTS A MORE SUSTAINABLE BUILD AND BUILDINGS

Swisspearl works every day to develop products that can contribute to more sustainable building. At the same time, the company is working to reduce its own carbon footprint, cut waste and minimise its environmental impact from production.

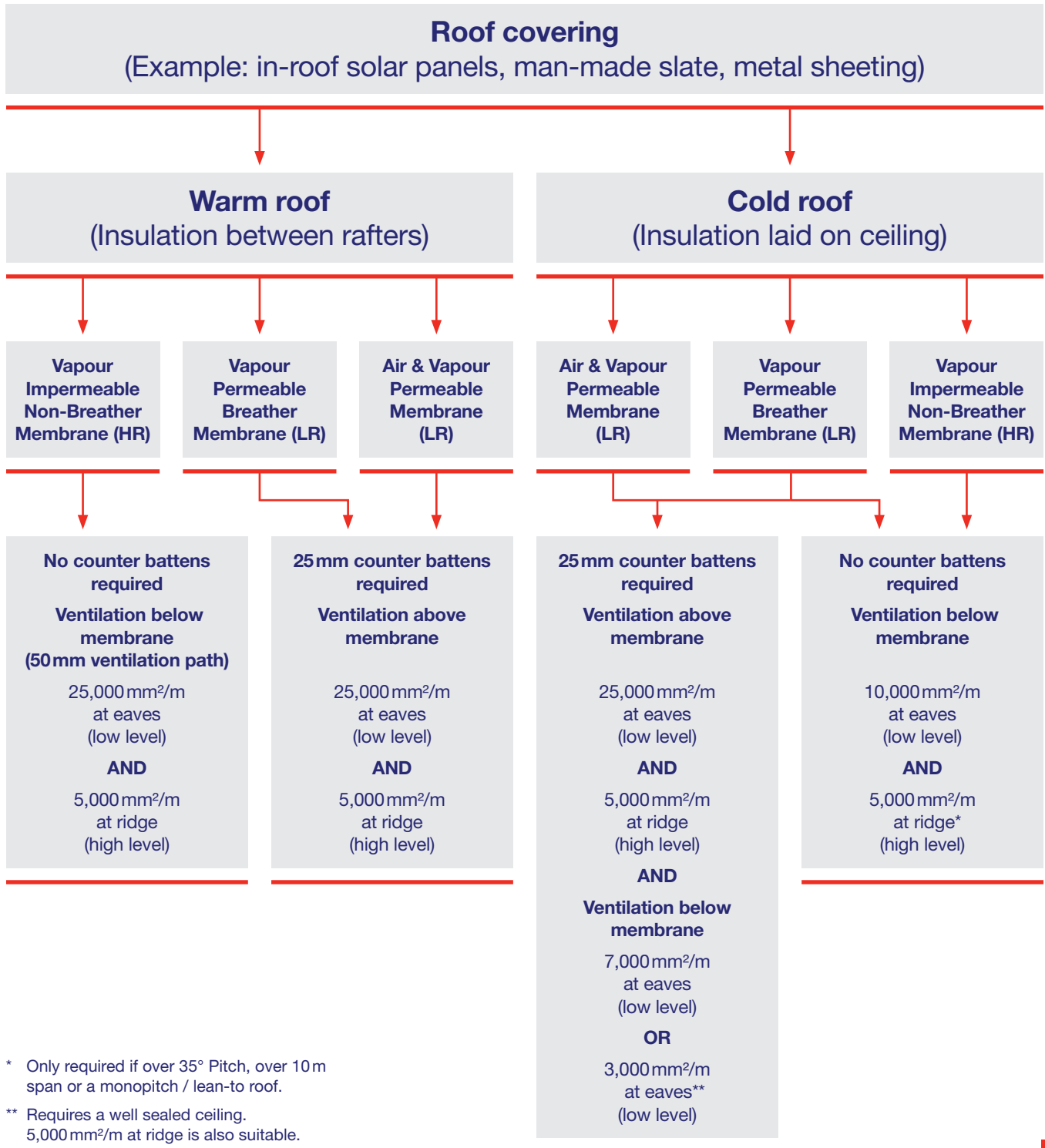
It creates quality fibre cement products such as façades, roof, building boards and solar, which are durable, cost efficient, and offer a range of benefits throughout their lifecycle.

For more information about Swisspearl, its sustainability policy and its range of fibre cement products, please visit www.swisspearl.com/en-uk.



IMPERMEABLE ROOF COVERING

VENTILATION GUIDANCE ACCORDING TO BS 5250

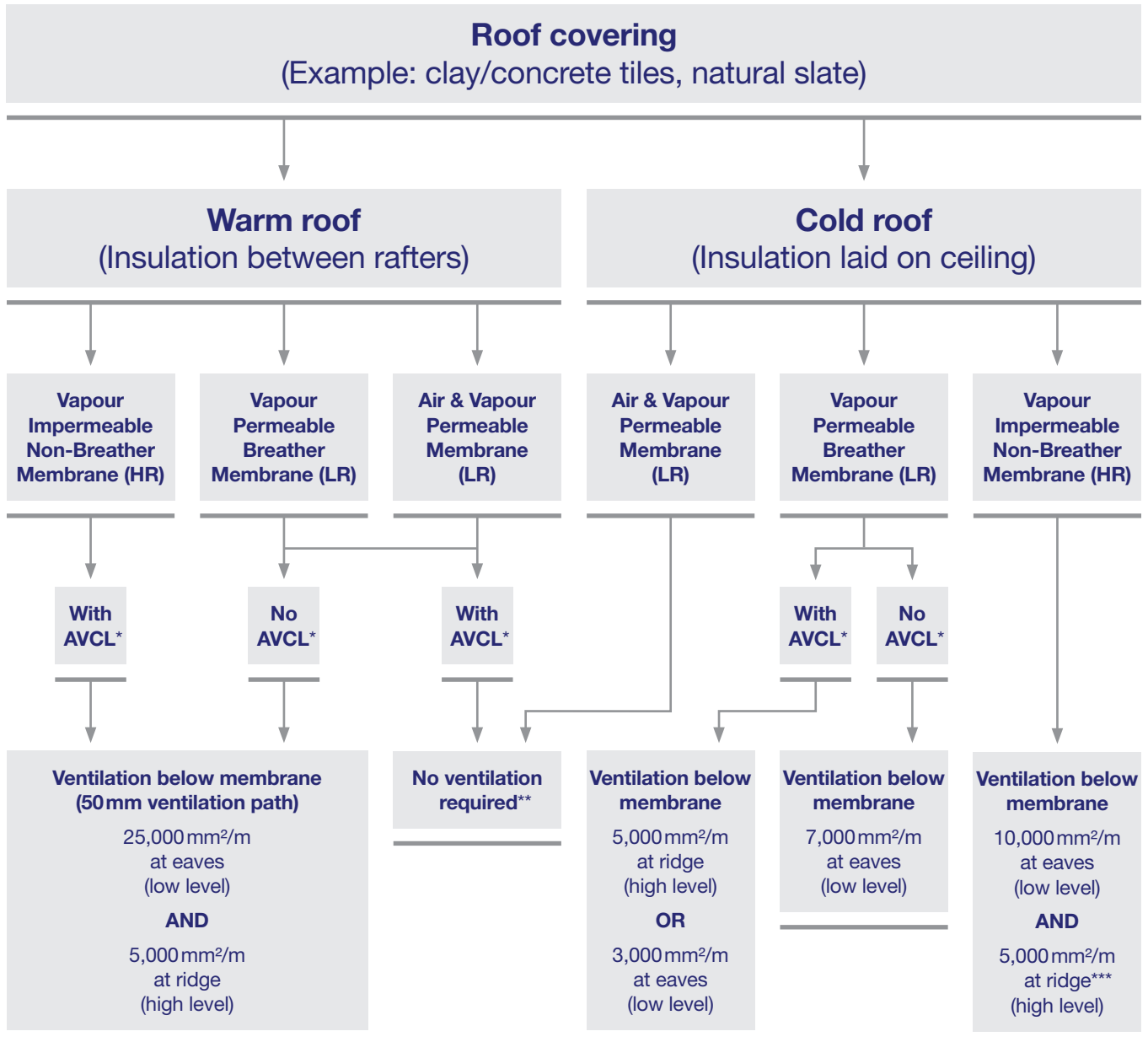


* Only required if over 35° Pitch, over 10m span or a monopitch / lean-to roof.

** Requires a well sealed ceiling. 5,000 mm²/m at ridge is also suitable.

PERMEABLE ROOF COVERING

VENTILATION GUIDANCE ACCORDING TO BS 5250



* AVCL = Air & Vapour Control Layer.

** As per NHBC guidance and relevant third party approval.

*** Only required if over 35° Pitch, over 10m span or a monopitch / lean-to roof.

EURO BUILDING SUPPLIES— THE ROOFER'S CHOICE



TEAMPOINT JOINS NFRC WITH A NEW OFFER FOR ROOFING BUSINESSES

TEAMPOINT has become an NFRC Supplier Member and is offering members a discounted price on its operations platform, which helps roofing businesses manage jobs, teams and compliance more efficiently.



EURO BUILDING SUPPLIES is widely regarded as one of the leading pitched roofing accessories suppliers in the UK. With over three decades of industry experience, the company has built strong, long-standing relationships with contractors who rely on its expertise and dependable service.

Whatever roofers are looking for, Euro Building Supplies offers everything 'under one roof', from dry-fix systems, breather membranes, tile vents, soakers, lead replacement products, PPE, blades, building chemicals, to general consumables and much more.

Its comprehensive product range is designed to deliver performance, reliability, and value on every job.

The company doesn't just supply materials; it provides knowledge, support and service that contractors can count on. The team is always available to offer advice, ensure smooth ordering, and arrange next-day delivery to keep projects moving.

Euro Building Supplies is committed to offering quality products at competitive prices.

So why do roofers choose Euro Building Supplies?

PROVEN QUALITY

Every product it supplies meets strict quality standards, sourced from trusted manufacturers known for durability and performance.

SUPPORT YOU CAN COUNT ON

Need help choosing the right product? The friendly, knowledgeable team at Euro Building Supplies is always there to make your job easier.

FAIR, TRANSPARENT PRICING

Euro Building Supplies believes quality shouldn't come with an inflated price. Expect honest, competitive prices every time.

NATIONWIDE SERVICE

It delivers across the entire UK.

NEXT-DAY DELIVERY

Order today, build tomorrow. Fast, reliable delivery to keep your projects on schedule.

For the best prices and expert advice please call **07813 012197**, email **geoff@eurobuildingsupplies.co.uk** or visit **www.eurobuildingsupplies.co.uk**.

PROTEKTOR WEMICO MARKS UK ROOFING DEBUT WITH WEST TEMPLE SHEEN PROJECT FILM

PROTEKTOR WEMICO has released a new project film showcasing its aluminium roof-coping system on a residential scheme at 40 West Temple Sheen, marking the company's arrival as a fresh entrant to the UK roofing market.

As the film demonstrates, Protektor Wemico copings are engineered to cap exposed parapets and prevent water ingress. They are independently tested for wind uplift—supporting robust, long-term, protection. The powder-coated aluminium system offers high durability and low maintenance, while the company's sustainable production processes help minimise environmental impact.

West Temple Sheen followed a tightly controlled process: a detailed site survey to capture every dimension, and CAD-drawn bespoke components fabricated in-house, dispatched on the company's own fleet and delivered ready for straightforward installation.

Protektor Wemico's heavy-duty, patented bracketry enables fast, secure mounting and consistent fit, reducing time on the parapet while supporting a high-quality visual outcome.



Simon Morgan, Protektor Group UK's Technical Director, said: **"Roof edges are where design intent meets weather reality. Our system is engineered for the pressures contractors face, delivering precision, speed and durability in one package."**

Protektor Wemico couples German precision, which originated in 1903, with UK-based production. Now entering the roofing space, it brings sustainable manufacturing processes, a wide choice of colours, textures and sizes and a location-dependent warranty of up to 30 years.

Architects, contractors and developers are encouraged to watch the film at www.protektor.co.uk/west-temple-sheen-project/ and book a consultation with the Technical Team through www.protektor.co.uk.

Roofers are often faced with shifting schedules, tight margins, changing weather and demanding documentation. Teampoint brings these moving parts into one place, helping teams stay organised and helping businesses get paid faster.

The platform has supported UK field service companies since 2011, providing tools for scheduling, job tracking, communication and compliance.

As more roofing firms move toward structured digital workflows, Teampoint is already

well equipped to meet their needs. Job management, RAMS templates, photo capture, inspections, training records, handover packs, financial tracking and team communication can all be managed in one system.

NFRC members can sign up at a discounted price; the standard £3,000 setup fee is reduced to £2,000, and licences reduced from £50 to £40 per user per month.

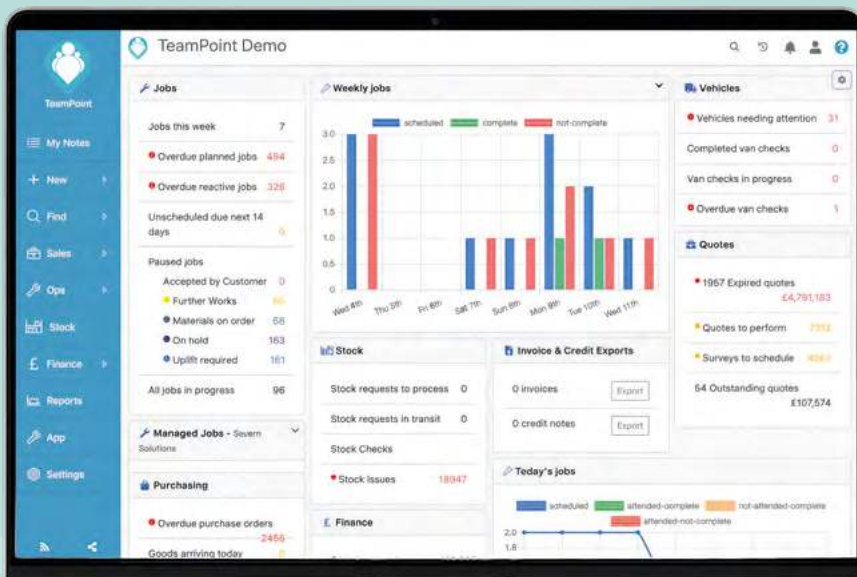
Alongside this, Teampoint is launching a focused pilot scheme with three roofing companies. Two NFRC member businesses are

already onboarding, with a third now being sought to complete the cohort. Participants will receive free setup and work closely with Teampoint to help shape roofing-specific functionality. Areas under consideration include Work at Height inspection tools, Safe2Torch recording, solar installation checklists, Golden Thread documentation, enhanced weather integrations, retention tracking, and competence-based crew matching.

Throughout 2026, Teampoint will introduce the platform to NFRC regions and speak with members about their operational challenges.

Teampoint looks forward to meeting more NFRC members over the coming year.

To learn more or arrange a demonstration please visit teampoint.app or email rosie@teampoint.app.



NEW MAGPLY CUSTOMERS Q9 AND AHR SIGN UP FOR A REPEAT

The use of fire-resistant roofing boards from UK manufacturer **MAGPLY** on an exemplar Passivhaus school was a first-time experience for the architects and installers. And both would be more than happy to use them again.

Magply's 12 mm-thick boards, which meet Euroclass EN13501 (A1 Non-Combustible) standards, were specified by AHR architects for Caledonia High School in Rosyth, Scotland.

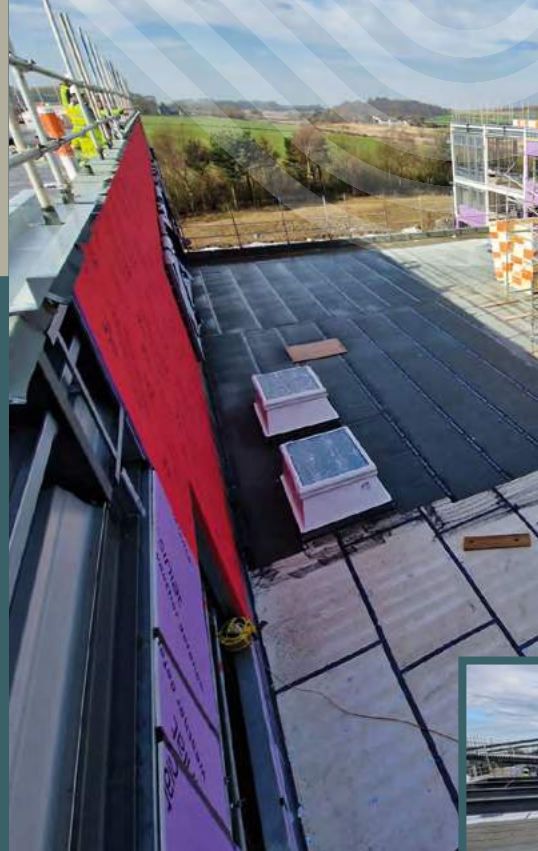
The magnesium oxysulfate boards were installed over metal roof deck sheets by specialist sub contractor Q9 Cladding Solutions to help provide a lightweight, flat surface for the waterproofing.

AHR Senior Architect Keith Peterson said: *"We were initially looking at using a weatherproof cement board, but the contractor was keen to look at alternatives as this was quite an expensive solution over the whole roof area."*

"The Magply board was a cost-effective solution that would ensure the airtight VCL layer was well supported to help achieve the Passivhaus standard. I had not used Magply before but would be happy to specify them again based on the experience we have had so far on our projects."

Q9 Cladding Solutions' Contracts Manager Graeme Ritchie added: *"We have used a similar product in the past, but this was the first time we had used Magply. It was great. There were no issues with its installation."*

"We don't specify products ourselves, but we have recently been working on a project using a similar product and I believe Magply is a superior product. The similar product absorbed water more easily and was more difficult to dry out."



For more information on **Magply** fire-resistant roofing boards and other roofing products please visit www.magply.co.uk/applications/roofing.

HI-TECH NEW TRAINING CENTRE OPENS FOR RENOLIT UK

Roofing membranes manufacturer **RENOLIT ALKORPLAN** has significantly expanded its European training infrastructure with the opening of a new, state-of-the-art training centre at the **RENOLIT UK** factory in Cramlington.

This strategic move underscores the company's commitment to empowering installers with practical skills and fostering trusted partnerships to guarantee long-term performance and peace of mind for the end client.

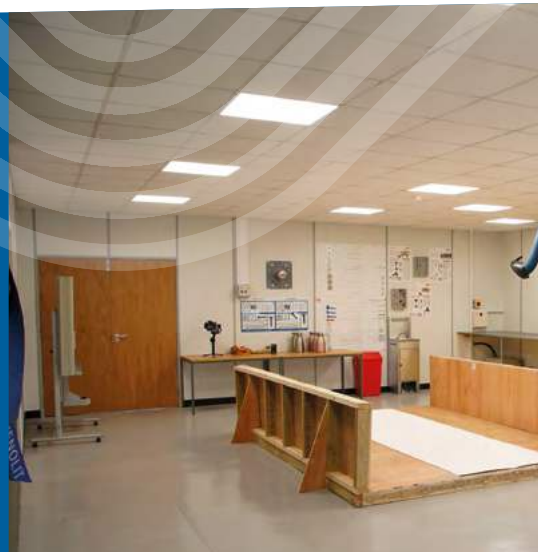
The new UK facility joins an extensive network of training centres across Europe—including Spain, Italy, France and Germany—which collectively train around 300 individuals annually. The comprehensive courses cover everything from membrane specifications to advanced welding, ensuring installations consistently exceed industry standards.

This investment is rooted in the core belief that while **RENOLIT ALKORPLAN** membranes are engineered for excellence, the ultimate success of any project depends on expert application.

Renaat Demeulemeester, Head of Roof & Water Care, said:

"Without adequately trained professionals, even the highest quality products cannot achieve their full potential."

For further information please visit www.renolit.com.





ANOTHER REASON TO ATTEND THE UK ROOFING AWARDS

NETWORKING

The highlight of the roofing events calendar celebrating the very best roofing projects.



COSTLY PAYMENT DISPUTE RESOLVED BY QURE GROUP

Thanks to **QURE GROUP**, a family-run construction company has avoided an **£18,000** dispute with a homeowner after completing a renovation.

Both parties feared a costly, drawn-out legal battle until they turned to QURE Group, specialists in home improvement dispute resolution.

"The homeowner was withholding payment, claiming the renovation lacked due care, while the builder refused remedial works, feeling the withheld sum was unfair,"

explained Tracy Dilworth, Dispute Service Controller at QURE Group.

Mediation offered a practical solution to find a pathway to resolution. QURE's skilled mediators provided a neutral space for open communication, allowing both sides to present their concerns and evidence.

Through constructive sessions, the parties identified the core issues, acknowledged each other's perspectives, and focused on practical solutions. This helped to resolve frustrations and bridge the gap between previously broken-down communication.

After a few sessions, QURE Group was happy to present a resolution that both sides agreed to. The builder agreed to complete the remaining works, while the customer agreed on a fair financial settlement. The dispute was resolved without resorting to costly legal action, saving time, stress and expense for everyone involved.

Dilworth added: *"At QURE Group, we understand the impact disputes can have on businesses and homeowners."*

"Our independent, impartial approach ensures a fair resolution, helping clients avoid legal delays and excessive costs while restoring relationships."

For more information on dealing with a customer dispute, or a client withholding payment, please call QURE Group today on 0800 211 8000 or email enquiries@quregroup.co.uk.



THE IDEAL SOLUTION FOR LOW-PITCHED ROOFS

Kevin Taylor, Training & Technical Support Manager at **MARLEY**, explains how concrete interlocking tiles provide instant visual appeal, exceptional strength, excellent water management performance and the installation flexibility required for low-pitched roofing projects.

Marley's Mendip 12.5° offers a number of benefits to ensure maximum performance once installed. It is suitable for installation at pitches as low as 12.5°, and up to 44° with a rafter length up to six metres and requires a 100 mm minimum head lap.

It can be effective when planning for single-storey lean-to extensions where the roof must fit under a first-floor window. It also helps to maintain a similar appearance to the main roof without the need to consider other solutions such as flat roofing materials or metal sheets. Colourway options range from Old English Dark Red and Smooth Grey to Smooth Brown.



The tile design of the Mendip has removed the requirement for nail holes to mitigate against water ingress, especially during times of heavy, wind-driven rain. In addition, the tile offers four anti-capillary grooves to reduce the chance of rainwater creeping up between overlapping tiles through capillary action. This is key for low pitches where water remains on the roof for longer timescales.

The Mendip 12.5° is mechanically clipped twice with a Mendip head clip and a SoloFix clip to ensure both quick fixing for roofers on site and the certainty that the tile is firmly and safely secured.

For more information on the Mendip 12.5° concrete interlocking tile please visit www.marley.co.uk/roof-tiles/concrete-roof-tiles/mendip-double-pantile.



SPECIALIST INSURER OFFERS SIGNIFICANT PREMIUM SAVINGS

JAMES HALLAM is an independent Lloyd's Broker with a dedicated Construction Division and a long-standing commitment to the roofing sector. It is proud to work closely with NFRC and its members, understanding the unique risks faced by roofing contractors operating in an increasingly complex insurance market.

In partnership with Touchstone Underwriting, a leading specialist insurer in the roofing sector, James Hallam has developed a bespoke insurance scheme exclusively for NFRC members. Touchstone's specialist underwriters utilise A-rated capacity and bring extensive experience in underwriting roofing risks, ensuring confidence, stability, and long-term support for members.

THREE TRUSTED ALUMASC BRANDS, ONE COMPLETE PARAPET SOLUTION

Teamwork makes the dream work—and that was exactly the case for a large-scale green roof installation posing complex logistical challenges.

At the roofline, Skyline Architectural Aluminium Copings provide a robust, maintenance-free capping system that is quick and easy to install due to its snap-fix bracket designed to avoid surface penetration. This maintains the integrity of the waterproofing while allowing ventilation over the top of the wall.

Independently tested for wind uplift to EOTA TR005, Skyline copings are available in flat or sloping profiles, with standard sizes and finishes held in stock for fast delivery.

Rainwater run-off is handled by Harmer Two-Way Outlets, which are specifically designed to simplify complex parapet and flat roof detailing. They integrate with all continuous waterproofing systems and connect to all standard pipe sizes.

Components are colour-coded for quick on-site identification, while optional aluminium threaded spigot adaptors provide a secure, gas-tight, A1 fire-rated connection, without the need for a mechanical connection within the parapet wall.



To complete the parapet system, all **ALUMASC** Rainwater downpipes are compatible. However, a popular contemporary choice is Flushjoint extruded aluminium, which offers a lightweight, corrosion-resistant solution which is easy to handle and fix. Concealed spigot joints deliver a clean, modern appearance, with circular, square, and rectangular profiles available.

Flushjoint offers seamless integration with Harmer extended spigot balcony outlets for a true end-to-end solution where balcony drainage is also required.

For more information please call 01536 383810 or visit www.alumascwms.co.uk.

This collaboration allows James Hallam to offer preferential pricing for NFRC members, with the potential for significant premium savings when compared to standard market placements.

Importantly, this is not simply a cost-driven solution. Members also benefit from a suite of enhanced policy features unavailable elsewhere in the market.

KEY ADDITIONAL BENEFITS INCLUDE:

- No height limit
- Financial loss and professional indemnity extension included
- Lower policy excesses
- Complimentary risk management survey
- Option to include contract works
- Option to include hazardous locations
- Enhanced low claims rebate of up to ten per cent of premium, returning money to members at year-end
- Risk management contribution to support safer working practices

James Hallam is pleased to make this exclusive scheme available to NFRC members and would welcome the opportunity to provide a complimentary review of existing insurance arrangements, helping members ensure that their cover is competitive and addresses their requirements.

For a complimentary review please call Charlie Fossey on 07484 912961 or email charlie.fossey@jameshallam.co.uk.

James Hallam Insurance Brokers is a trading name of James Hallam Limited who are authorised and regulated by the Financial Conduct Authority.



NFRC SUPPLIER MEMBERS

MANUFACTURERS

A. Proctor Group Ltd

www.proctorgroup.com
01250 872261
contact@proctorgroup.com

ACO Building Drainage

www.aco.co.uk/aco-building-drainage
01462 816666
abdmarketing@aco.co.uk

Actis Insulation Ltd

www.insulation-actis.com
01249 462888
solutions@insulation-actis.com

Airflow (Nicol Ventilators) Limited

www.airflow-vent.co.uk
01425 611547
sales@airflow-vent.co.uk

Alumasc Building Products Ltd

www.alumascroofing.com
01744 648 400
info@alumascroofing.com

Ampteam Ltd

www.ampteam.co.uk
01384 252777
uniford@ampteam.co.uk

Apollo Roofing Solutions

www.apolloroofingsolutions.co.uk
01827 54281
apollo-enquiries@hbfuller.com

Ash and Lacy Building Systems Ltd

www.ashandlacy.com
0121 525 1444
will.bishop@ashandlacy.com

Axter Ltd

www.axter.co.uk
01473 724056
info@axterltd.co.uk

Bauder Ltd

www.bauder.co.uk
01473 257671
technical@bauder.co.uk

BMI UK & Ireland

www.bmigroup.com/uk
01908 015760
sales.admin@bmigroup.com

Bové Draadproducten BV

bove.eu
00 31 486 411 868
sales@bove.eu

Breedon Group

www.breedongroup.com
028 92 647100
productsales@breedongroup.com

Brett Martin Daylight Systems Ltd

brettmartin.com/daylight-systems
02476 602022
daylight@brettmartin.com

Buzon UK Ltd

buzonuk.com
0208 614 0874
info@buzonuk.com

CA Group Ltd

www.cagroup.co.uk
01388 834242
development@cagroup.co.uk

Calder Industrial Materials Ltd

calderlead.co.uk
07957 728706
cphilliskirk@calderlead.co.uk

Carlisle Construction Materials Ltd

www.ccm-europe.com
01623 627285
info.uk@ccm-europe.com

Cardinal Steels Ltd

cardinalsteels.com
01527 330000
sales@cardinalsteels.com

Cedral

www.cedral.world/en-gb
01283 501555
matthew.castles@etexgroup.com

Centaur Technologies

www.centaurroofing.co.uk
01772 453107
jl@centaurroofing.co.uk

CPI Mortars Ltd

www.cpieuromix.com
01698 464110
enquiries@cpieuromix.com

Cromar Building Products Ltd

cromarbuildingproducts.com
01977 663133
whitley-sales@uk.sika.com

CUPA Pizarras S.A

www.cupapizarras.com/uk
020 3318 4455
uk@cupapizarras.com

Cure It Composites Ltd

www.cureit.com
01942 518150
enquiries@cureit.com

Danosa UK Ltd

www.danosa.com
0845 074 0553
uksales@danosa.com

DEKS Industries Europe Ltd

www.deks.co.uk
01275 858866
sales@deks.co.uk

Don & Low

www.donlow.co.uk
0808 169 4444
membranes@donlow.co.uk

DuPont Tyvek

www.dupont.co.uk
08444 068 722
tyvek.construction@dupont.com

Eco Green Group

ecogreengroup.co.uk
01277 355705
info@ecogreengroup.co.uk

Edilians

www.edilians.com
07818 043808
geoffrey.doran@edilians.com

EJOT UK Ltd

www.ejot.co.uk
01977 687040
info@ejot.co.uk

Elevate UK and Ireland

www.holcimelevate.com
01565 756185
info@ewscLtd.co.uk

Euroclad Group Ltd

www.eurocladgroup.com
02922 010101
enquiries@eurocladgroup.com

Fakro GB Ltd

www.fakro.co.uk
01283 554755
sales@fakrogb.com

Fallprotec UK Ltd

fallprotec.com
07769 227310
ts@fallprotec.com

Fatra UK Ltd

fatra.co.uk
02920 487954
sales@fatra.co.uk

Filon Products Ltd

www.filon.co.uk
01543 687300
sales@filon.co.uk

Firth Steels Ltd

www.firth-steels.co.uk
01484 405940
info@firth-steels.co.uk

Flex-R Ltd

www.flex-r.co.uk
01494 448792
enq@flex-r.co.uk

FOAMGLAS®

www.foamglas.co.uk
03301 227 638
info@foamglas.co.uk

FP McCann Ltd

www.fpmccann.co.uk
01455 290780
sales@fpmccann.co.uk

Garland UK

garlanduk.com
01174 401050
contact@garlanduk.com

Genius Roof Solutions

geniusroofsolutions.com
01257 793113
joanna@geniusroofsolutions.com
SKILL-BUILD
Sponsor

Glidvale Protect

www.glidvaleprotect.com
0161 905 5700
info@glidvaleprotect.com

SKILL-BUILD

Sponsor

Greenpolly Ltd

greenpolly.co.uk
07859 894827
greenpolly@virginmedia.com

Guttercrest Ltd

www.guttercrest.co.uk
01691 663300
info@guttercrest.co.uk

H C Wraxall & Co Ltd

www.wraxalls.co.uk
01797 322396
office@wraxalls.co.uk

Hambleside Danelaw Ltd

www.hambleside-danelaw.co.uk
01327 701900
sales@hambleside-danelaw.co.uk

HD Sharman Ltd

www.hdsharman.co.uk
01298 812371
info@hdsharman.co.uk

Hera Waterproofing Ltd

herawaterproofing.co.uk
0121 828 8953
phil@herawaterproofing.co.uk

HS Butyl Ltd

www.hsbutyl.com
01590 684400
sales@hsbutyl.com

ICB (Waterproofing) Ltd

www.icb.co.uk
01202 785200
info@icb.co.uk

IKO PLC

www.ikogroup.co.uk
01257 255771
info.uk@iko.com

InStar UK Ltd

www.instar-uk.co.uk
01858 456949
info@instar-uk.co.uk

IPP Ltd

www.intpetro.com
01621 776252
ollie@magply.co.uk

Jordeson Timber

www.jordeson.co.uk
01904 633351
office@jordeson.co.uk

Keylite Roof Windows

www.keyliteroofwindows.com
01283 200150
info@keyliteuk.com

Kingspan Insulation Ltd

www.kingspan.com
01544 388 601
info@kingspaninsulation.co.uk

Kingspan Ltd

www.kingspan.com
01351 706101
aisling.sands@kingspan.com

Klober Ltd

www.klober.co.uk
03306 780088
info@klober.co.uk

Knauf Insulation Ltd

www.knauf.co.uk
01744 766866
marketing.uk@knaufinsulation.com

Kytun (UK) Ltd

www.kytun.com
01684 293702
info@kytun.com

LAMILUX UK

lamiluxskylights.co.uk
01284 749051
sales@lamilux.co.uk

Liquid Roofing Systems Ltd

www.lrs-systems.co.uk
01948 841 877
enquiries@lrs-systems.co.uk

Mannok Build Ltd

www.mannokbuild.com
08000 322 122
sales@mannokbuild.com

Mapei (UK) Ltd

www.mapei.co.uk
01902 637422
ukmarketing@mapei.co.uk

Manthorpe Building Products

www.manthorpebp.co.uk
01773 303000
mbp.care@manthorpebp.co.uk

Marley Ltd

www.marley.co.uk
01283 722588
info@marley.co.uk

Metal Solutions Ltd

www.metalsolutions.uk.com
01204 491800
sales@metalsolutions.uk.com

Nimbus Roof Technologies Ltd

nimbusrooftech.com
01799 610788
info@nimbusrooftech.com

Nordic Forest (UK) Ltd

www.nordicforest.co.uk
0208 304 1016
andy@nordicforest.co.uk

Northstone NI Ltd - Materials Division

www.northstoneroofiles-gb.com
02870 321100
enquiries@northstone-ni.com

Paslode Spit (ITW Construction Products)

www.itwcp.co.uk
0800 833 381
PO-CS@itwcp.com

Pentagon Specialist Products Ltd

www.pentagonsp.com
07718 936399
sales@pentagonsp.com

Permavent Ltd

www.permavent.co.uk
01305 766703
enquiries@permavent.co.uk

Pizarras Samaca, S.A.U

www.samaca.com
00 34 988 335 555
samaca@samaca.com

Polyroof Products Ltd

www.polyroof.co.uk
01352 735135
admin@polyroof.co.uk

PREFA UK LTD

uk.prefa.com
020 7795 8124
office.uk@prefa.com

Premier Sealant Systems Ltd

www.sealprem.com
01724 864100
sales@sealprem.com

Protan (UK) Ltd

www.protan.co.uk
01925 658 001
sales@protan.co.uk

Protektor Group UK Ltd

www.protektor.co.uk
01562 515200
sales@protektor.co.uk

Proteus Waterproofing

www.proteuswaterproofing.co.uk
01268 777871
enquiries@proteuswaterproofing.co.uk

Radmat Building Products Ltd
www.radmat.com
01858 410372
techenquiries@radmat.com

Recticel Insulation UK Ltd
www.recticelinsulation.com
017820 590470
technicalservices@recticel.com

Remix Dry Mortar Ltd
www.remixdrymortar.co.uk
01329 231200
info@remixdrymortar.co.uk

RENOLIT Alkorplan
renolit.com/en/industries/home-
building/exterior/roofing
01670 718283
matthew.adamson@renolit.com

Restec Roofing Ltd
www.restecroofing.co.uk
0845 4504 193
enquiries@restecroofing.co.uk

ROCKWOOL UK Ltd
www.rockwool.co.uk
01656 862621
info@rockwool.com

Rose Roofing Ltd
www.rose-roofing.co.uk
01977 516044
sales@rose-roofing.co.uk

Rubberseal Ltd
www.rubberseal.com
01290 559 333
info@rubberseal.com

S R Timber Ltd
www.sr-timber.co.uk
01623 446800
sales@sr-timber.co.uk
SKILL-BUILD
Sponsor

Shield Membranes
www.shieldmembranes.com
020 7740 9279
info@shieldmembranes.com

Siderise Insulation Ltd
www.siderise.com
01656 730833
salesteam@siderise.com

Sievert UK
www.sievert.se
01536 310300
sales@rothenberger.co.uk

Sika Ltd
www.gbr.sika.com
01707 394444
enquiries@uk.sika.com

Sky Garden Greenroofs Ltd
www.sky-garden.co.uk
01242 620905
enquiries@sky-garden.co.uk

**Skyline Architectural Aluminium c/o
Alumasc Water Management Systems**
www.alumascwms.co.uk/brands/skyline
01536 383810
info@alumascwms.co.uk

Solfit Ltd
solfit.co.uk
07775 897980
sales@solfit.co.uk

Soprema UK
www.soprema.co.uk
0330 058 0668
info@soprema.co.uk

Strata Waterproofing Ltd
www.stratawaterproofing.com
028 9030 2924
info@stratawaterproofing.com

Swisspearl GB Ltd
www.swisspearl.com
01925 748 246
info@gb.swisspearl.com

Topseal Systems Ltd
www.topseal.co.uk
01423 886 495
enquiries@topseal.co.uk

Tor Coatings Ltd
tor-coatings.com
0191 410 6611
enquiries@tor-coatings.com

Triflex (UK) Limited
www.triflex.co.uk
01785 819119
info@triflex.co.uk

Ubbink UK Ltd
www.ubbink.co.uk
01604 433000
sales@ubbink.co.uk

Unilin Insulation UK Ltd
www.unilininsulation.co.uk
00 353 46 906 6097
marketing.uk@unilin.com

Vanquish Systems Ltd
vanquishsystems.com
01902 271863
info@vanquishsystems.com

VELUX
www.velux.co.uk
01592 778 225
sales@velux.co.uk

Wallbarn Ltd
www.wallbarn.com
0208 916 2222
sales@wallbarn.com

Welsh Slate Ltd
www.welshslate.com
01248 600656
enquiries@welshslate.com

WestWood Liquid Technologies Ltd
www.westwood-uk.com
0800 808 5480
orders@westwood-uk.com

Wienerberger Ltd
www.wienerberger.co.uk
01427 871200
simon.garbett@wienerberger.com

W J Horrod Ltd
www.wjhorrod.co.uk
020 8539 8746
info@wjhorrod.co.uk

MERCHANTS

Belgrade Insulations Ltd
www.belgradeinsulations.com
0113 252 6524
info@belgradeinsulations.com

Chandlers Roofing Supplies
www.chandlersroofing.co.uk
01273 815100
enquiries@chandlersbs.co.uk

CTF Insulation Ltd
www.ctfinsulation.co.uk
0333 207 0870
office@ctfinsulation.co.uk

Euro Building Supplies
www.eurobuildingsupplies.co.uk
07813 012197
geoff@eurobuildingsupplies.co.uk

Fixing Point Ltd
www.fixingpoint.com
01242 265100
sales@fixingpoint.com

Galaxy Insulation & Drylining Ltd
www.galaxyinsulation.co.uk
0114 700 5702
garyanthony@galaxyinsulation.co.uk

Harrowden Turf Ltd
www.harrowdenturf.co.uk
01832 777100
marketing@harrowdenturf.co.uk

Imperial Roofing Supplies UK Ltd
imperialroofingsupplies.co.uk
07827 332601
sales@imperialroofingsupplies.co.uk

Independent Roofing Supplies Ltd
www.irsl.co.uk
01273 516999
enquiries@irsl.co.uk

Industrial Roofing Products Ltd
www.irpltd.co.uk
01454 299588
sales@irpltd.co.uk

Lagan Building Solutions Ltd
www.lbsproducts.com
0800 096 7612
info@LBSproducts.com

Langley Group
www.langley.co.uk
01327 704778
enquiries@langley.co.uk

Linroc Ltd
www.linroc.co.uk
01793 764000
info@linroc.co.uk

MAK Fastener Specialists (NI) Ltd
www.makfasteners.com
0161 866 8164
uksales@makfasteners.com

Meir Roofing & Insulation Supplies
www.meir-roofing.co.uk
01405 780444
sales@meir-roofing.co.uk

Mercury Building Products Ltd
mercurybuildingproducts.co.uk
01246 292816
orders@vaprfree.co.uk

Northern Slate Supplies Limited
www.northernslate.co.uk
07487 870070
john@northernslate.co.uk

Onestop Roofing Supplies Ltd
www.onestoproofingsupplies.com
0141 445 6777
natalie@weareonestop.com

PermaGroup
permagroup.co.uk
01773 608 839
sales@permagroup.co.uk

**Raven Roofing and
Building Supplies Ltd**
ravenroofingsupplies.co.uk
0208 893 8954
info@ravenroofingsupplies.co.uk

Robert Price Roofing
www.robert-price.co.uk
01873 858585
enquiries@robert-price.co.uk

RR Stone Ltd
rrstone.co.uk
01539 822666
sales@rrstone.co.uk

Saucer Solutions Ltd
www.saucersolutions.co.uk
0141 774 0065
sales@saucersolutions.com

SIG Roofing Head Office
www.sigroofing.co.uk
01480 466777
info@sigroofing.co.uk
SKILL-BUILD
Sponsor

Skyline Roofing Centres
www.skylineroofing.co.uk
0208 571 6128
info@skylineroofing.co.uk

Spanish Slate Quarries UK Ltd
www.ssqgroup.com
020 8961 7725
info@ssq.co.uk

Stephens Industries Ltd
www.stephens-industries.co.uk
01225 810324
info@stephens-industries.co.uk

Tapered Roofing Systems Ltd
taperedroofing.co.uk
01938 552255
info@taperedroofing.co.uk

TaperedPlus Ltd
www.taperedplus.co.uk
01642 677342
sales@taperedplus.co.uk

Tektum Supplies Ltd
tektumsupplies.co.uk
0141 739 9440
sales@tektumsupplies.co.uk

UK Roofing Supplies Ltd
www.ukroofingsupplies.co.uk
01753 539820
info@ukroofingsupplies.co.uk

Wonderbuilds Inc. Limited
www.wonderbuilds.co.uk
0208 208 2121
admin@wonderbuilds.co.uk

SERVICE PROVIDERS

4 Cladding Services
www.vaclifting.co.uk
03707 417600
info@vaclifting.co.uk

AbiCAD Ltd
www.abicad.co.uk
01489 589454
admin@abicad.co.uk

Adler Fairways Insurance Brokers Ltd
www.adlerfairways.co.uk
0121 764 5500
info@adlerfairways.co.uk

Aether
aethernrg.com
07400 763 252
tsalome@aethereenergy.me

Buileach Construction Services Ltd
buileach.co.uk
07777 752145
ross@buileach.co.uk

CADIS MGA Ltd
cadismga.co.uk
01752 910400
phil@cadismga.co.uk

Clear Insurance Management Ltd
clearinsurancemanagement.com
01622 683913
construction@thecleargroup.com

Drummond Roofing Consultancy Ltd
www.drummondroofing-
consultancy.co.uk
07515 027576
gilles@
drummondroofingconsultancy.co.uk

GeoShield Ltd
www.geoshield.co.uk
01133 208639
kkiller@geoshield.co.uk

GLA Group Ltd
gla-group.co.uk
07838 243312
andy@glagroup.uk

HICH Ltd
hich-ltd.co.uk
0345 257 0858
admin@hich-ltd.co.uk

**James Hallam Real Estate
and Construction**
www.jameshallam.co.uk
01923 603 168
andrew.dischamps@jameshallam.co.uk

Lucideon Ltd
lucideon.com
01785 331874
query@lucideon.com

McCarron Coates Ltd
www.mccarroncoates.com
0113 298 3489
luigi@mccarroncoates.com

**Premierline Business
Insurance Broker**
premierline.co.uk
0330 102 2173
stephanie.conway@premierline.co.uk

QANW
www.qanw.co.uk
01292 268020
info@qanw.co.uk

QURE Group Ltd
quregroup.co.uk
0800 211 8000
enquiries@quregroup.co.uk

Roof Test Consultancy Ltd
www.rooftestconsultancy.co.uk
0208 470 8118
office@rooftestconsultancy.co.uk

Roof Tests & Surveys Ltd
rooftestsandsurveys.co.uk
07955 206708
info@rooftestsandsurveys.co.uk

Surveyroof Ltd
www.surveyroof.co.uk
0345 257 7663
sales@surveyroof.co.uk

TeamPoint
teampoint.app
07791 232895
rosie@teampoint.app

The Externals Group
theexternalsgroup.com
07729 093137
hello@theexternalsgroup.com

The Pallet LOOP
www.thepalletloop.com
0800 024 6130
info@thepalletloop.com

Thornton Consulting Group Ltd
www.thorntonconsulting.co.uk
01342 410508
mail@thorntonconsulting.co.uk



LEARN MORE

It's **more** than a roof

It's a Marley Solar Roof System.



In 2026 Marley celebrates 60 years of NFRC membership.

For the past six decades we've been proud to support the NFRC, helping to promote the roofing industry and improve standards of professionalism, work, and safety across the sector through research, training, and collaboration.

marley.co.uk

