

ROOFING TIMES

ISSUE

12

RECOGNISING ROOFING EXCELLENCE: IT'S TIME TO ENTER THE UK ROOFING AWARDS 2023



**DO YOU
HAVE A
WINNING
PROJECT?**

'If you can, we would also like you to tell us how you navigated challenges, or went the extra mile to make sure you achieved a great result. Excellent supply chain management, using the project to help apprentices develop their skills, or even involving the local community, are impressive elements that we always want to recognise.'

'We also want to see your commitment to best practice in health and safety.'

In addition to a winner being crowned in each category, the project deemed by the judges as best across all categories will gain the prestigious title of Roof of the Year 2023. One entry will also be voted for and chosen by the industry for the Industry Choice Award.

Companies with a standout young roofer, apprentice or trainee are encouraged to recommend them for the Young Roofer of the Year Award, gaining them recognition for their hard work, commitment and a great start to their career.

PROJECTS COMPLETED BETWEEN 1 JANUARY 2021 AND 31 DECEMBER 2022 ARE ELIGIBLE. SUBMIT YOUR ENTRY ONLINE NO LATER THAN FRIDAY 13 JANUARY 2023.

To submit your project, visit nfrc.awardsplatform.com
More information and the full entry criteria are available at: roofingawards.co.uk

NFRC is welcoming project nominations for the UK Roofing Awards 2023 until the **deadline of Friday 13 January**. Amid a range of submissions from across the UK and in each of the 15 project categories—which include a wide range of disciplines across pitched and flat roofing, cladding and rainscreen—how can you enter and how do you make a project stand out?



HEAD JUDGE
Bob Richardson,
NFRC's Head of
Technical and Training,

HAS SOME TIPS

'One vital element is to make sure you include clear photos of the project, before, during and after the work—we want to see what you started with and the process, as well as the finished product and photos that show off your excellent workmanship.'

UK ROOFING
AWARDS
2023

NFRC

2023 UK ROOFING AWARD ENTRIES

CLOSING DATE: 13 JANUARY!

DON'T MISS OUT ON YOUR CHANCE TO WIN AN AWARD

Entries can be for projects that were completed between 1 January 2021 and 31 December 2022.

A selection of winning projects from 2021 UK Roofing Awards.



WELCOME

Welcome to another jam-packed issue of Roofing Times. We've got some great articles for you, including some from our newest Supplier Members who you'll not have seen featured before.

Also following on from the front cover article, the 2023 UK Roofing Awards take place in May but **projects have to be entered by 13 January 2023**. Taking out the time we'll all be off over Christmas, it doesn't leave long to get your entries in, so don't delay and crack on with getting your projects submitted. Links for tickets and project entries are on page 11.

Finally, there are a few sponsorship opportunities remaining for Supplier Members, so please drop me a line if you are interested in discussing these at all.

Happy reading,

Steve

Steve Laurence

National Account Manager—
Suppliers and Service Providers

UK ROOFING AWARDS 2023 SPONSORS

HEADLINE
SPONSOR

Radmat
building products

BAUDER

CROMAR
Building Products

CUPA PIZARRAS
The world leader in natural slate

ICB
WATERPROOFING

Marley

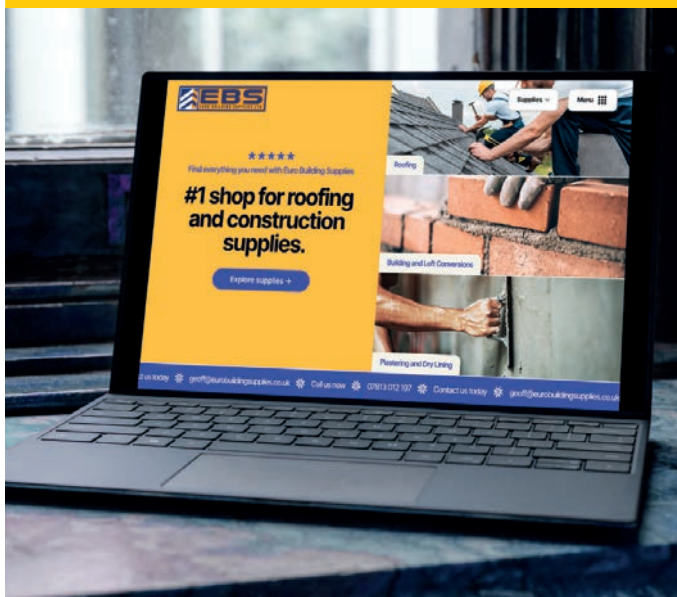
FEEL
GOOD
INSIDE
RECTICEL
insulation

SIDERISE
integrity in all we do

BUILDING TRUST

Sika

EURO BUILDING SUPPLIES: A FULL-SERVICE SOLUTION TO ROOFING CONTRACTORS



EURO BUILDING SUPPLIES is proud to align itself with NFRC and its focus to promote the highest quality products.

With over 30 years of experience, Euro Building Supplies imports and distributes a full range of pitched roofing membranes. In addition to its best-selling Dry-Fix Ridge Kit, it has a plethora of essential products and accessories for customers to choose from. These include tile vents, adapters and flexi pipes, a full range of fixings, sealants, PPE, all 3 m dry valleys, lead replacement, diamond blades, and a range of general consumables.

“

THE COMPANY STATES:

”

What sets us apart is our ability to provide a full-service solution from start to finish.

We pride ourselves in quality, consistency and an unbeatable world-class service. Our team of highly-skilled and knowledgeable staff is on hand to offer expert advice and support, every step of the way. From quotation through to delivery and aftercare, we will be there for you.

THE ADVANTAGES OF USING EURO BUILDING SUPPLIES INCLUDE:

- Carriage paid on orders £400 and over
- Bulk deals available
- Full product brochure available.

To find out about the whole range please visit www.eurobuildingsupplies.co.uk or by contacting Geoff on 07813 012197.

WIENERBERGER UK & IRELAND ANNOUNCES SIGNIFICANT INVESTMENT TO ACCELERATE SUSTAINABLE GROWTH STRATEGY

WIENERBERGER has announced a significant investment in the construction of a brand-new concrete roof tile manufacturing facility in Kent, south east England, along with the significant energy transformation of its Broomfleet factory near Hull in the north east.

The new, state-of-the-art concrete roof tile production facility will be sited next to its Smeed Dean brick factory.



The business will simultaneously complete the ambitious renovation of two of its Broomfleet factory lines, making it Europe's first ever clay roof tile plant to completely eliminate the use of natural gas and the associated CO₂ emissions from the drying and firing process, reducing the carbon emissions of these lines by 75 per cent.

The new concrete tile-making facility will significantly increase the company's production capacity, with new and existing tile formats, providing additional capacity with lower CO₂ emissions per m² of installed roof.

The transformational investment at its Broomfleet clay roof tile manufacturing site near Hull is driven by the desire to reduce resource consumption and CO₂ output. Wienerberger has chosen the UK for the first commercial-scale implementation of electric kilns using 100 per cent renewable energy within the clay roof tile manufacturing sector.

For more information please visit www.wienerberger.co.uk or call **01427 318077**.

HAMBLESIDE DANELAW TO THE ROOFING RESCUE

In a 2021 survey conducted by the Construction Industry Training Board (CITB), 32 per cent of respondents, which consisted of both self-employed construction workers as well as employers, believed that labour shortages were a limiting factor in sales and output.

The skills shortage has been well documented, with CITB reporting that the industry will need an additional 217,000 new workers by 2025 to meet demand. The good news is that between August 2021 and January 2022, 20,500 began apprenticeships: an increase of 63.9 per cent over the same period in 2020/21.

Hambleside Danelaw, as a roofing ancillaries manufacturer, is well aware of the demands that are facing the construction industry at the moment and is committed to helping ease these demands as much as it can.

Hambleside Danelaw often donates roofing products to training centres and colleges around the country and is always on hand to answer technical questions through techhelp@hambleside-danelaw.co.uk.

Last year Hambleside Danelaw Hub was launched, an online platform where people can take free courses about a range of topics, from GRP flashings to ridge ventilation. This platform has proved popular with both contractors and merchants alike, and can be accessed on mobile devices on the go.

At the end of each module, participants gain a certificate detailing the course content, making this a fantastic opportunity for those new to the industry.

*Hambleside Danelaw is pleased to announce that there are two new courses coming to the platform: **LR Roof Tile Underlays**, and **Plain Tile Roof Vents**.*

To register your interest for these modules, please email marketing@hambleside-danelaw.co.uk.





NEW FACTORY GRADED QUALITY ROOFING BATTENS YOU CAN TRUST

MERCURY BUILDING PRODUCTS are launching **Roofers Choice Orange** factory-graded Roofing Battens that conform to all aspects of **BS 5534:2014-A2:2018** and **HSG33**.

Roofers Choice Orange Quality Roofing Battens are produced in Latvia from high grade Whitewood WPCA (80 per cent) and Redwood PNSY (20 per cent) logs that are sourced from either PEFC or FSC chain of custody certified resources.

They are factory graded by experienced staff who visually grade the batten twice for size (thickness -0 mm +3 mm & width +/-3 mm) and size of knot. Third party accreditation by CATG ensures that the battens meet all requirements of BS 5534:2014-A2:2018.

Roofers Choice Orange Quality Roofing Battens are kiln-dried to ensure an average 20 per cent moisture content and partially stored under cover to ensure longevity in both quality and colour. Produced full to size, each batten is individually marked showing details

of supplier, origin, size, BS 5534, species code and name of company giving third party accreditation.

The distinctive orange colour is achieved using a vacuum and high pressure (12 bar) treatment that achieves the requirements of usage class 2 (BS 8417:2011+A1:2014). This ensures the battens have a minimum life expectancy of 60 years when installed above ground level in buildings. This treatment process also has accreditation by the CATG.

Roofers Choice Orange Quality Battens meet the guidance set out in the NFRC TB33 'Graded Battens for Slating and Tiling' which states that only battens that have been pre- or factory-graded to BS 5534 can be called or used as roofing battens.

For further information please call **Mercury Building Products' Technical and Sales Support** on **01246 292816** or email **orders@vaprfree.co.uk**

WOWNOW: YOUR ONE-STOP SHOP FOR EQUIPMENT HIRE

WowNow is making a name for itself in the equipment hire sector. In the company's own words, these are the reasons why you will be guaranteed the right hire solution for every job, every time, from five million available products and why you'll not regret using its end-to-end solutions for all your needs.

We guarantee the right hire solution for every job as we can offer all of the following:

Free hire consultation—our expert hire team will assess your needs and provide solutions based on 30 years of experience in the commercial hire industry.

The right equipment, when you need it—we guarantee the right equipment for every job, every time, from five million available products.

The hard work is done for you—we'll take care of everything, end to end. Best of all, we'll never let you down as we're not restricted by stock or resources.

Nationwide delivery—with over 9,000 depots, we'll deliver to anywhere in the UK, with guaranteed off-hires.

Whether you are conducting pre-planned maintenance work or reactive response, we can help your company take care of roofing and guttering work.

WHATEVER YOUR CHALLENGE, WE'LL GET IT SORTED.

Speak to our expert hire team today on **01329 655385**, mobile **07897 733220**, or email **Tracey Dunn** at **Tracey.Dunn@wownowhire.co.uk**.



BILCO UK SETS THE STANDARD FOR SAFETY AT GLASGOW HOUSING DEVELOPMENT

Glasgow's latest redevelopment project, located on Langside Road, is built upon the former site of the city's Victoria Infirmary and consists of a large housing development that includes 413 flats, offices and retail space.

As part of the construction process, **BILCO UK** was commissioned to supply six ESW-50REM Smoke Vents, in addition to seven E-50TB Roof Access Hatches, to provide the highest standards of safety and efficiency, whilst being sympathetic to the project's overall design.

CHOOSE RECTICEL VIP PANELS FOR INDUSTRY-BEST THERMAL PERFORMANCE IN HARD-TO-REACH SPACES

Deck-VQ® and Hydrodeck-VQ® vacuum insulation panels (VIPs) are **RECTICEL's** pioneering response to customer demand for insulation that maximises comfort and protection in limited space.

With Deck-VQ®, its ultra-thin vacuum insulation panel (VIP) is encased in PIR. Despite its slender form, Deck-VQ® delivers a thermal performance of 0.008 W/mK, whilst its VIP core provides a Lambda value of 0.006 W/mK.

This makes the panel ideal for a wide range of flat-roof and terrace applications where insulation build-up thickness is an issue.

Deck-VQ®'s innovative composition—designed by Recticel's renowned Research and Development Team—ensures the most complex refurbishment

projects can be completed without costly structural changes. Compared to other VIP panels, Deck-VQ® is extremely easy to handle. It's a benefit that comes into its own when working in hard-to-reach areas.

Hydrodeck-VQ®

Ultra-thin Hydrodeck-VQ® is the ultimate solution for inverted roof applications where build-up thickness space is limited and regulation levels of energy performance are required. Its panel is fully encapsulated within a 1.5 mm-thick EPDM membrane, a simple, effective innovation that enshrines Hydrodeck-VQ®'s performance and durability by providing a robust barrier against damp and moisture ingress.

Deck-VQ®

As with Deck-VQ®, Hydrodeck-VQ® produces an industry-best lambda value of 0.006W/mK and equally, its easy-to-install properties hallmark the VIP panel as a product specifically designed for installers and end users alike.

Excellent customer support comes as standard upon purchase of Deck-VQ® and Hydrodeck-VQ® panels. Therefore, Recticel's technical teams are able to specify and design a VIP system in areas beyond the capability of traditional insulation solutions.

Hydrodeck-VQ®

To discover how Deck-VQ® and Hydrodeck-VQ® VIP panels can benefit your next building project, please visit www.recticelinsulation.com/en-gb/home.



Installed onto the roof areas of four blocks of flats by Scottish contractors, Procladd Small Works Ltd, Bilco UK's ESW-50REM Smoke Vents were specified to provide essential ventilation in the event of a building fire.

Billy Baillie, Managing Director at Procladd Small Works Ltd, said: *"Bilco UK's Roof Access Hatches and Smoke Vents were incredibly easy to install, and knowing they're engineered to meet the highest industry standards, it provided both ourselves and the client with the confidence that the installation would set the standard for performance and longevity."*

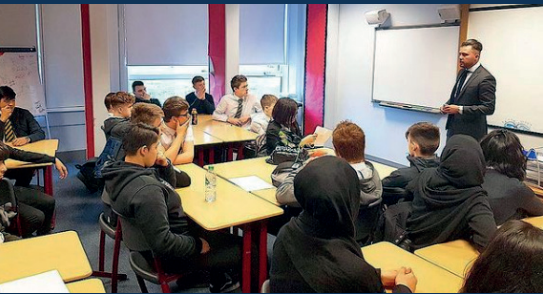
Constructed with corrosion-resistant materials, Bilco UK's E-50TB Roof Access Hatches were also installed to provide engineers with safe, regular and convenient access to the roof to conduct essential maintenance.

Engineered with compression spring operators to provide easy one-hand operation, the roof access hatch meets the requirements of Manual Handling Regulations, whilst the automatic hold-open arm locks the cover in the open position to ensure safe egress.

For further information on Bilco UK's complete range of roof access solutions, please visit www.bilcouk.co.uk or call **01284 701696**.



CAMPAIGN AIMS TO INSPIRE OUR YOUTH



McCORMACK PARTNERS are much more than specialist recruiters; they are a bastion of positive and meaningful change who wish to leave a legacy on our industry by removing stigmas and creating pathways for young people, from all walks of life, to leave their own imprint on our market.

So in 2021 they launched their ambitious *'#PeopleMakeRoofing'* campaign.

Their promise is to deliver highly impactful campaign messages to young people in schools, colleges and universities across the UK, all in order to inspire the next generation to consider our vibrant, dynamic market as the launchpad for their careers.

In doing so Luke McCormack, Managing Director of McCormack Partners, said *"(We can) play our part in tackling a much more complex problem: the industry's long-standing skills gap crisis, owing to the misplaced and outdated stigmas surrounding our sector."*

Their campaign, backed by popular industry professionals such as James Talman (NFRC), Sarah Spink (LRWA), Andy Williamson (SIG), Kate Whatley (SPV) and Dr Jonathan Evans (Ash & Lacy), is therefore a mission to shift perception from the stereotypes of construction work to the perks of the specialist careers available in our industry.

The *#PeopleMakeRoofing* campaign guests have shared stories of their respective careers and, in doing so, delivered inspiring career stories which demonstrate themes of personal achievement, belonging, success, recovery and, above all else, impact.

McCormack Partners are excited to share their campaign collateral on LinkedIn from later this year, which they say will illustrate how the industry is collectively bringing inspiring messages to young people across the UK.

For further information please visit www.mccormack-partners.com



SIG AND IKO COME TO DB CARGO'S RESCUE

The 3000 m2 International Electric Maintenance Depot of DB Cargo UK has been constantly in use since 1960 and the roof was showing its age.

Glass rooflights made up 40 per cent of the roof area with the remainder covered by a built-up felt system mounted on a galvanised steel deck. While the deck was still in good condition, time had caused the felt to degrade so that the roof leaked badly.

With lots of constraints around site access, contractors GL Contracts proposed re-roofing by overlaying the existing roof.

In developing the solution, GL Contracts was supported by SIG Design and Technology. Together they worked up a solution using IKO's Armourplan PSG Fleece Backed PVC membrane bonded to heavy duty 18 mm OSB board, which in turn was mechanically fixed to the existing roof structure.

The use of an OSB overlay allowed the existing roof to remain in place. It was attached by screwing down through the existing roof and into its steel subframe. Armourplan was then bonded to the OSB board using Armourplan Spectrabond Low Foaming PU adhesive. Because Armourplan is gas-permeable, any moisture remaining in the original roof will be able to evaporate over time.

The rooflights were to be retained so SIG Design and Technology developed a bespoke membrane detail to provide a watertight seal around them.

With full materials warranties provided by SIG this was a pragmatic solution to a complex renovation challenge.

For more product information please visit www.sigroofing.co.uk and www.ikopolymeric.com.



ROBERT PRICE BUILDERS' MERCHANTS OPENS ITS BRAND-NEW SUSTAINABLE ENERGY CENTRE IN SOUTH WALES

ROBERT PRICE, the largest independent Builders' Merchants in south east Wales, has invested in a greener future with a brand-new sustainability showroom.

The multi-faceted merchant comprises 18 traditional merchant yards, four specialist roofing branches, two timber mills, an insulation branch, an agricultural supplies outlet and a specialist branch for kitchens, bathrooms and landscaping.

The latest addition to this array of divisions is a specialist 'Energy Team' and the brand-new 'Sustainable Energy Centre' at Robert Price, Newport.

The 'Sustainable Energy Centre', SEC for short, is a new showroom dedicated to

showcasing renewable building technologies and sustainable building products. It includes sustainable roofing product, SolarTile®, from pitched roof tile specialists, Marley.

By educating the industry on a wide range of sustainable building products and installation practices, Robert Price is working closely with Welsh housing providers and private sector contractors to work towards sustainable buildings fit for the future.

The centre offers in-house accredited training for installers, plus customer product guidance and a dedicated 'Energy Team' on hand to assist as clients navigate from traditional methods of building, heating and powering our homes, to technologies of the future.



New and existing customers, clients or suppliers are invited to get in touch for more information, or to book an appointment to visit the Sustainable Energy Centre. Please email energy@robertprice.co.uk or call 01633 636163 to find out more.

You will find the SEC at Robert Price Builders' Merchants, Corporation Road, Newport, NP19 4AD.

SKYLINE ARCHITECTURAL ALUMINIUM MAKES AN ENTRANCE AT 10 QUEEN STREET PLACE

When a 1980s London office development underwent extensive refurbishment, Skyline Architectural Aluminium fascia soffit systems from Alumasc Water Management Solutions were specified to create a beautiful new entrance befitting of the building's prestigious Thames-side location and stunning new interior.

10 Queen Street Place is a 100,000 ft² development which saw a complete remodelling of its inside space, resulting in increased office workspace, new facilities for tenants and significantly improved environmental credentials.

Alumasc's approved installers, Tetraclad, were brought in by fit-out specialist Overbury Ltd to install new doorway surrounds at the main entrance. The project demanded a number of oversized bespoke panels to overclad the existing façade, concrete soffit, ceiling and side walls. Alumasc was able to manufacture varying Skyline profiles and large width soffits to the building's exact specification.

Extensive support was also provided by Alumasc's Skyline Technical Team for the detailed specification and manufacture of intricate stencilled panels required to display the building's address. These stunning panels were then backlit to illuminate the address as an eye-catching feature of the main entrance.

The Skyline range is based on high-quality materials and unsurpassed technical design expertise. All elements are manufactured from superior polyester powder-coated aluminium and are available in a selection of standard bold generic shapes with bespoke designs available to order when unusual design elements are at play. Skyline Architectural Aluminium is low maintenance and 100 per cent recyclable.



For more information, contact **AWMS** on **01536 383810** or visit **www.alumascwms.co.uk**



BETTERS SAFE RECEIVES KINGSPAN APPROVAL FOR FALL PROTECTION EQUIPMENT

It is with great pride that **BETTERS SAFE International** can announce that it has been awarded Recommended Supplier Status by Kingspan.

This means that Bettersafe International can now offer a full range of tested and approved solutions for fall protection on all Kingspan QuadCore Panel Systems under the QuadCore Warranty Scheme, including the newly-launched PowerPanel.

The Axxess100 Fall Protection product offering means you can provide a complete access solution to your building, with a cost-effective, fully-tested and approved range of products.



The range includes active and passive safety solutions, with full design assistance available from the Bettersafe International Team.

The systems will be able to be entered when applying for cover under the QuadCore System Warranty Scheme, meaning that installation of

the Axxess100 range of products on a Kingspan Panel will not infringe the requirements of the QuadCore System Warranty Scheme.

When asked for his thoughts on this announcement, Bettersafe's Development Director, Steve Jervis, said:

“After a lot of hard work, discussions, testing and late nights we now have a superb opportunity to provide our customers, and the customers of Kingspan, with a complete solution for fall protection, with not only a lifeline system, but also a range of passive protection systems to ensure that the users are provided with the best approved solution possible.”

KINGSPAN SPECIFIC AXCESS100 RANGE	
AxxessLine	Horizontal Lifeline System
AxxessGuard	Guard Rail System
AxxessWalk	Walkway and Access Systems
AxxessSky	Skylight Protection Systems

For more information visit: <https://bit.ly/3G0hqsa>

MEET THE NEW GENERATION, SOLAR-POWERED ROOF HATCH FROM SURESPAN

With over 35 years of expert industry knowledge, **SURESPAN** is a pioneer in developing innovative roof access solutions that are simple to install, cost-effective and readily available.

The new solar panel access hatch is a thermally broken and fully-insulated roof hatch fitted with a solar panels and electric actuator for out-of-the-box, wireless operation. It is installed with fully recyclable, non-combustible mineral wool insulation to further enhance Surespan's green credentials. Mineral wool is a fully naturally-derived alternative to the likes of polyisocyanurate insulation.

The semi-flexible ETFE solar panel adheres to the lid of the roof hatch and a cable runs within the upstand connected to a battery pack and small control module allowing remote control, eliminating the need for an electrician.

Research and development are key driving forces for Surespan, ensuring products stay relevant in the ever-changing building landscape, from increasing thermal performance to improving the air permeability of its roof hatches.



Tom Davies, Commercial Director, said:

“By working with Surespan, rest assured that together we are doing everything we can to positively impact the world around us.

“Our manufacturing happens right here in the UK. One small choice to purchase responsibly can have a massive impact on the surrounding environment with similar manufacturers often shipping their hatches from as far as Mexico and America.

“Choose Surespan for a greener, more sustainable future.”

You can find out more at <https://bit.ly/3SUbrsd>





RAVEN ROOFING SUPPLIES CELEBRATES 50 YEARS OF OPERATION

FOR MORE INFORMATION PLEASE VISIT WWW.RAVENROOFINGSUPPLIES.CO.UK

It is becoming increasingly rare for any company to reach 50 years of operation under original ownership

However, **RAVEN ROOFING SUPPLIES** is one such company whose current owners, **Mark Applebee and Andrew Morris**, are the sons of the two men who first went into partnership in 1972 when Raven was born.

Bill Applebee and Alf Morris were those two business partners and many in the industry will remember them as the 'true gentlemen' that they undoubtedly were. To this day the core principles they stood for of friendly, reliable service lives on.

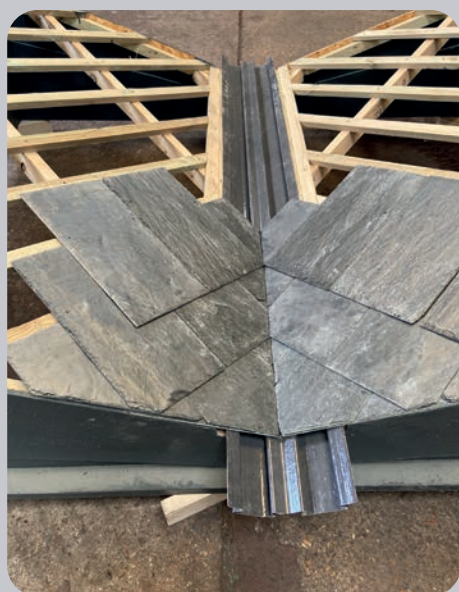
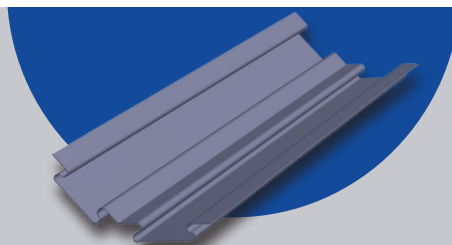
Raven Roofing Supplies now consists of five branches across the south of England. From its inception Raven has moved from being a contracting business, selling off excess roofing materials, to one of the market-leading merchants for the south.

Although the contracting side of Raven is no longer operating, the influence of understanding the contracting world is embedded in the business. Knowing what customers want and need is where the heritage of having experience of contracting really helps.

To keep this understanding going, x new recruits, along with established members of the Raven team, attend internal training courses to learn more about the application of the products they sell.

Whilst Mark and Andrew talk passionately about their desire to modernise, they do not forget what made Raven successful in the first place. A friendly, reliable, service ethic is still at the core of what they do, and they fully expect to celebrate further landmark anniversaries in the future.

GROUND-BREAKING GRP VALLEY TROUGH IS LAUNCHED



Heritage Valley Slate Test Rig

FILON PRODUCTS LTD, the innovative GRP construction products manufacturer, is extremely pleased to announce the arrival of the Heritage Valley Trough. This ground-breaking, patent-pending GRP valley trough provides a simple and extremely cost-effective method of creating a close mitred valley in slate roofs and plain tiled roofs.

All natural and man-made slate and clay or concrete plain tile roofs can now benefit from the improved aesthetic of a close-mitred valley without the normal high costs associated with it.

The Heritage Valley is a hidden valley trough positioned completely beneath the roof slates/tiles and needs no lead soakers between

courses. As the distance to span between supports is very short but maintains a wide drainage channel by the use of its super-S design, the quantity of slate/tile and a half going into the valley is significantly reduced. This offers a great material cost saving.

This incredible, pioneering valley trough has been put through its paces with a BRE Wind Driven Rain test and outperformed the slates and tiles at every point of the test programme. Therefore its performance is assured and provides the heritage aesthetic of a traditional close-mitred valley without any of the expensive materials and labour time normally needed.

Filon has provided the means of producing a beautiful valley for less cost than a normal dry fix or open valley trough.

For more information please go to www.filon.co.uk/new-valley-trough-launched.

NEW APPOINTMENTS AT THE PALLET LOOP AHEAD OF Q1 2023 ROLL-OUT

The Pallet LOOP team has made two strategic appointments ahead of the roll-out of its circular economy, reusable green pallets in early 2023.

Deb Dillon-Foster has been appointed Head of Customer Engagement, while Amy Fernandes has joined the business as Agile Delivery Lead.

Previously a Senior Sales Manager at Scott Group, Deb Dillon-Foster will be responsible for transitioning customers at the top of the building materials supply chain to The Pallet LOOP. With more than 25 years' experience in the pallet industry, Deb knows the sector inside out and has relationships in place with key building material manufacturers nationwide.

Amy Fernandes joins The Pallet LOOP from University College London (UCL) where she was Agile Delivery Manager in the Information Services Division. At The Pallet LOOP, Amy

will champion agile working practices and embed processes and procedures that will underpin the business as it works to solve the costly problem of pallet waste in the construction sector.

Phil Dent, Chief Executive at The Pallet LOOP, said: *"Deb and Amy join The Pallet LOOP at a pivotal point. During the last few months we've focused on face-to-face engagement with manufacturers, merchants and end users throughout the building materials supply chain. "With help from the Builders Merchants Federation, we've hosted a series of working group meetings with different stakeholders to discuss the practicalities of implementing The Pallet LOOP. That dialogue is progressing well with several end-to-end trials now underway. As our conversations continue and full scale roll-out draws nearer, Amy's and Deb's roles will be invaluable."*

For more information on The Pallet Loop product please visit www.thepalletloop.com.



Pictured left to right: Deb Dillon-Foster; the Pallet LOOP team continues to grow; Amy Fernandes

DEFECTS IN SUB-CONTRACT WORKS—RIGHT TO RETURN?

From time to time contractors may allege that there are defects present in the sub-contract works. The legal principle often brought to the fore in these circumstances is the contractor's duty to mitigate their loss.

Where the work is carried out for another business, for example when undertaking work as a sub-contractor, unless the contract expressly provides for it there is no automatic right to return to remedy defects. This would then allow the contractor to employ others to

carry out remedial works but the courts may still deem this a breach of their duty to mitigate if it had been reasonable for the sub-contractor to be offered the chance to remedy the defects.

It is common to see a defects liability period included which stipulates that the sub-contractor, during a specified period of time, is required to return and remedy defects. If, having been notified of defects, the sub-contractor refuses to return then it could find itself liable to pay for the cost of another business to remedy those defects.

Generally a contractor would be prudent to offer to remedy defects because it could avoid a claim being brought against them. If the sub-contractor unreasonably refuses you the chance to remedy any defects, they could be acting in breach of contract themselves or be in breach of their duty to mitigate their loss.

While the principles remain similar, the position regarding returning to remedy defects is different where work is carried out for a consumer as terms are implied into the contract by the Consumer Rights Act 2015.

For further advice, contact **PGM SOLICITORS** on **01792 468684** or email enquiries@pgmsolicitors.co.uk.

ONDULINE LAUNCHES INSTALLATION GUIDE FOR ITS NEW LOW LINE UNDER-ROOF SYSTEM

ONDULINE, the lightweight roofing systems and proofing specialist, is delighted to announce the launch of the installation guide for its new and unique under-roof system, ISOLINE® LOW LINE—the only system in the UK to be BRE-tested and BBA-accredited to as low as 10° with a 30-year guarantee.

Designed specifically for use on low pitch roofs, this lightweight bituminous underlay sheeting has been rigorously tested and is at least three times less likely to leak compared to a traditional tile system.

The installation guide explains what ISOLINE® LOW LINE is, the installations that it is suitable for, the benefits of the system and how it works. It then goes on to describe step-by-step fitting of the system with handy imagery and illustrations.

With a corrugation height of just 24 mm, ISOLINE® LOW LINE is fixed below the primary tile or slate roof covering, acting as the primary waterproofing layer of a roof, making roof tiles a secondary line of defence which enables the pitch of the roof to be much lower than the minimum as recommended by the tile manufacturer.

Not only does this help to meet the demand for maximising living space, as the low pitch means the roof void can be minimised, it also enables traditional tiles to be used in situations where they wouldn't have been able to be utilised previously, such as extensions or large roofing projects, greatly enhancing the aesthetic quality of a property.



To view the installation guide please visit <http://bit.ly/3FZU0CV>.

ENTER THE 2023 UK ROOFING AWARDS NOW!

UK ROOFING
AWARDS
2023

NFRC

FRIDAY 12 MAY 2023:
InterContinental London–The O2

Only a few weeks left to enter projects.

Don't miss out on your chance to win one of these prestigious industry awards.

Tickets are also now available for purchase.



SCAN QR CODE
OR VISIT:
bit.ly/3e2f3cp
FOR ENTRIES



SCAN QR CODE
OR VISIT:
bit.ly/3PRSAvC
FOR TICKETS

HEADLINE
SPONSOR

Radmat
building products

Here are FIVE good reasons to consider entering an award:

- 1 INCREASED CREDIBILITY**
Highly regarded industry accolade, recognition of your company's skills and outstanding workmanship.
- 2 BENCHMARKING**
Help raise your company profile, gaining a competitive edge.
- 3 FREE MARKETING**
Shortlists and winners are showcased online and across industry newsletters and publications.
- 4 EMPLOYEE EXCELLENCE**
Recognise the hard work and achievements of your employees, boosting staff morale.
- 5 NETWORKING**
The highlight of the roofing events calendar celebrating the very best roofing projects.

ROOFINGAWARDS.CO.UK



MANUFACTURERS

- A. Proctor Group Ltd**
www.proctorgroup.com
01250 872261
contact@proctorgroup.com
- ACO Building Drainage**
www.aco.co.uk/aco-building-drainage
01462 816666
abdmarketing@aco.co.uk
- Actis Insulation Ltd**
www.insulation-actis.com
01249 462888
solutions@insulation-actis.com
- Airflow (Nicolil Ventilators) Limited**
www.airflow-vent.co.uk
01425 611547
sales@airflow-vent.co.uk
- Alumasc Building Products Ltd**
www.alumascroofing.com
01744 648 400
info@alumascroofing.com
- Ampteam Ltd**
www.ampteam.co.uk
01384 252777
uniford@ampteam.co.uk
- Apollo Roofing Solutions**
www.apolloroofingsolutions.co.uk
01827 54281
enquiries@apolloroofingsolutions.co.uk
- Arbor Forest Products Ltd**
www.arborforestproducts.co.uk
01469 532300
sales@arborforestproducts.co.uk
- Axter Ltd**
www.axter.co.uk
01473 724056
info@axterltd.co.uk
- Bauder Ltd**
www.bauder.co.uk
01473 257671
technical@bauder.co.uk
- Bilco UK Ltd**
www.bilco.co.uk
01284 701696
bilco@bilco.com
- Blackdown Greenroofs**
www.blackdown.co.uk
01460 234582
enquiries@blackdown.co.uk
- BMI UK & Ireland**
www.bmigroup.com
01908 015160
sales.admin@bmigroup.com
- Boulder Developments Ltd**
www.superfoil.co.uk
01636 639900
technical@boulder.co.uk
- Bove Draadproducten BV**
www.bove.nl
00 31 486 411 868
jules@bove.eu
- Breedon Group**
www.breedongroup.com
028 92 647100
productsales@breedongroup.com
- Brett Martin Ltd**
www.brettmartin.com
024 7660 2022
daylight@brettmartin.com
- Britannia Paints Ltd**
www.britanniapaints.co.uk
01606 834015
sales@britanniapaints.co.uk
- Building Innovation (EcoTherm Insulation (UK) Limited)**
www.building-innovation.co.uk
01926 888808
info@building-innovation.co.uk
- CA Group Ltd**
www.cagroup.co.uk
01388 834242
development@cagroup.co.uk
- Carlisle Construction Materials Ltd**
www.ccm-europe.com
01 623 627285
info.uk@ccm-europe.com
- Cedral**
www.cedral.world/en-gb
01283 501555
matthew.castles@etexgroup.com
- Chesterfelt Ltd**
www.chesterfelt.co.uk
01246 268000
general@chesterfelt.co.uk

- CPI Mortars Ltd**
www.cpiemortars.com
01698 464110
enquiries@cpiemortars.com
- Cromar Building Products Ltd**
www.cromar.co.uk
01977 663133
sales@cromar.co.uk
- CUPA Pizarras S.A**
www.cupapizarras.com
020 3318 4455
uk@cupapizarras.com
- Danosa UK Ltd**
www.danosa.com
0845 074 0553
uksales@dandosa.com
- DuPont Tyvek**
www.dupont.co.uk
08444 068 722
tyvek.construction@dupont.com
- Easy-Trim Roofing and Construction Products Ltd**
www.easy-trim.co.uk
0845 034 6008
sales@easy-trim.co.uk
- Eco Green Roofs Ltd**
www.egr.co.uk
01277 355705
info@egr.co.uk
- Edilians (formerly Imerys Roof Tiles)**
www.edilians.com
07818 043808
geoffrey.doran@edilians.com
- EJOT UK Ltd**
www.ejot.co.uk
01977 687040
info@ejot.co.uk
- Euroclad Group Ltd**
www.eurocladgroup.com
02922 010101
enquiries@eurocladgroup.com
- Evergreens UK Ltd**
www.everroof.co.uk
01572 766912
temi@evergreensuk.com
- Evolution Fasteners (UK) Ltd**
www.evolutionfasteners.co.uk
0141 647 7100
technical@evolutionfasteners.co.uk
- Fakro GB Ltd**
www.fakro.co.uk
01283 554755
sales@fakrogb.com
- Filon Products Ltd**
www.filon.co.uk
01543 687300
sales@filon.co.uk
- Firth Steels Ltd**
www.firth-steels.co.uk
01484 405940
info@firth-steels.co.uk
- Flex-R Ltd**
www.flex-r.co.uk
01494 448792
enq@flex-r.co.uk
- Foamglas UK**
www.foamglas.co.uk
0207 727 0533
info@foamglas.co.uk
- Geco Waterproofing Systems**
www.gecomembrane.com/en
00 39 045 6616246
export@gecomembrane.com
- Guttercrest Ltd**
www.guttercrest.co.uk
01691 663300
info@guttercrest.co.uk
- H C Wraxall & Co Ltd**
www.wraxalls.co.uk
01797 322396
office@wraxalls.co.uk
- Hambleside Danelaw Ltd**
www.hambleside-danelaw.co.uk
01327 701900
sales@hambleside-danelaw.co.uk
- HD Sharman Ltd**
www.hdsharman.co.uk
01298 812371
info@hdsharman.co.uk
- HS Butyl Ltd**
www.hsbutyl.com
01290 684400
sales@hsbutyl.com
- ICB (Waterproofing) Ltd**
www.icb.co.uk
01202 785200
info@icb.co.uk

- IKO PLC**
www.ikogroup.co.uk
01257 255771
info.uk@iko.com
- InStar UK Ltd**
www.instar-uk.co.uk
01858 456949
info@instar-uk.co.uk
- IPP Ltd**
www.intpetro.com
01621 776252
ollie@magply.co.uk
- Jordeson Timber**
www.jordeson.co.uk
01904 633351
office@jordeson.co.uk
- Keylite Roof Windows**
www.keylitteroofwindows.com
01283 200150
info@keyliteuk.com
- Kingspan Insulation Ltd**
www.kingspan.com
01544 388 601
info@kingspaninsulation.co.uk
- Kingspan Ltd**
www.kingspan.com
01351 706101
aisling.sands@kingspan.com
- Klober Ltd**
www.klober.co.uk
03306 780088
info@klober.co.uk
- Kytun (UK) Ltd**
www.kytun.com
01684 293702
info@kytun.com
- Liquid Roofing Systems Ltd**
www.lrs-systems.co.uk
01948 841 877
enquiries@lrs-systems.co.uk
- Mannok Build Ltd**
www.mannokbuild.com
08000 322 122
sales@mannokbuild.com
- Manthorpe Building Products**
www.manthorpepb.co.uk
01773 303000
mbp.care@manthorpepb.co.uk
- Marley Ltd**
www.marley.co.uk
01283 722588
info@marley.co.uk
- Metal Solutions Ltd**
www.metalsolutions.uk.com
01204 491800
sales@metalsolutions.uk.com
- Moy Materials (UK) Ltd**
www.moymaterials.com
00 353 1 463 3900
info@moymaterials.com
- Nordic Forest (UK) Ltd**
www.nordicforest.co.uk
0208 304 1016
andy@nordicforest.co.uk
- Northstone NI Ltd - Materials Division**
www.northstoneroofing-gb.com
02870 321100
enquiries@northstone-ni.com
- Onduline**
www.onduline.com/en
0207 727 0533
enquiries@onduline.net
- Paslode Spit (ITW Construction Products)**
www.itwcp.co.uk
0800 833 381
PO-CS@itwcp.com
- Permavent Ltd**
www.permavent.co.uk
01305 766703
enquiries@permavent.co.uk
- Pizarras Samaca, S.A.U.**
www.samaca.com
00 34 988 335 555
samaca@samaca.com
- Polyfoam XPS Ltd**
www.polyfoamxps.co.uk
01429 855100
info@polyfoamxps.co.uk
- Polyglass GB Ltd**
www.polyglass.com
01902 637422
info@polyglass-gb.com
- Polyroof Products Ltd**
www.polyroof.co.uk
01352 735135
admin@polyroof.co.uk
- PREFA UK LTD**
uk.prefa.com
020 7795 8124
office.uk@prefa.com

- Premier Sealant Systems Ltd**
www.premseal.co.uk
01724 864100
sales@premseal.co.uk
- Protan (UK) Ltd**
www.protan.co.uk
01925 658 001
sales@protan.co.uk
- Proteus Waterproofing**
www.proteuswaterproofing.co.uk
01268 777871
enquiries@proteuswaterproofing.co.uk
- Radmat Building Products Ltd**
www.radmat.com
01858 410372
techenquiries@radmat.com
- Rectical Insulation UK Ltd**
www.recticalinsulation.com
01782 590470
technicalservices@rectical.com
- Remix Dry Mortar Ltd**
www.remixdrymortar.co.uk
01329 231200
info@remixdrymortar.co.uk
- Restec Roofing Ltd**
www.restecroofing.co.uk
0845 4504 193
enquiries@restecroofing.co.uk
- ROCKWOOL UK Ltd**
www.rockwool.co.uk
01656 862621
info@rockwool.com
- Rose Roofing Ltd**
www.rose-roofing.co.uk
01977 516044
sales@rose-roofing.co.uk
- Rubber4Roofs Ltd**
www.rubber4roofs.co.uk
0800 313 4486
office@rubber4roofs.co.uk
- S R Timber Ltd**
www.sr-timber.co.uk
01623 446800
sales@sr-timber.co.uk
- Safab Ltd**
www.safabtd.co.uk
0141 954 1119
sales@safab.co.uk
- Sahtas UK Ltd**
www.sahtas.co.uk
01604 434909
sahtasuk@sahtas.com
- SFS Group Fastening Technology Ltd**
www.uk.sfs.com
0330 0555 888
ukenquiries@sfs.com
- Shield Membranes**
www.shieldmembranes.com
020 7740 9279
info@shieldmembranes.com
- Siderise Insulation Limited**
www.siderise.com
01656 730833
Helen.massay@siderise.com
- Sievert UK**
www.sievert.se
01536 310300
sales@rothenberger.co.uk
- Sika Limited**
www.gbr.sika.com
01707 394444
enquiries@uk.sika.com
- Sky Garden Greenroofs Ltd**
www.sky-garden.co.uk
01242 620905
enquiries@sky-garden.co.uk
- Skyline Architectural Aluminium c/o Alumasc Water Management Systems**
www.alumascwms.co.uk/brands/skyline/
01536 383810
info@alumascwms.co.uk
- Soprema UK**
www.soprema.co.uk
0330 058 0668
info@soprema.co.uk
- Sotech**
www.sotech-optima.co.uk
07850 089210
technical@sotech-optima.co.uk
- Strata Waterproofing Ltd**
www.stratawaterproofing.com
028 9030 2924
jim@stratawaterproofing.com
- Sundolitt Ltd**
www.sundolitt.com
01786 471586
enquiries@sundolitt.com

- Surespan Ltd**
www.surespancovers.com
01922 711185
sales@surespancovers.com
- The Garland Company UK Ltd**
www.garlanduktd.co.uk
01174 401050
info@garlanduktd.co.uk
- Thysis Building Products Ltd**
www.thysis.co.uk
01759 377233
sales@thysis.co.uk
- TN International**
www.tnroofingsystems.com
01786 451170
customerservice-uk@tn-i.com
- Topseal Systems Ltd**
www.topseal.co.uk
01423 886 495
enquiries@topseal.co.uk
- Triflex (UK) Limited**
www.triflex.co.uk
01785 819119
info@triflex.co.uk
- Ubbink UK Ltd**
www.ubbink.co.uk
01604 433000
sales@ubbink.co.uk
- VELUX**
www.velux.co.uk
01592 778 225
sales@velux.co.uk
- Wallbarn Ltd**
www.wallbarn.com
0208 916 2222
sales@wallbarn.com
- Welsh Slate Ltd**
www.welshslate.com
01248 600656
enquiries@welshslate.com
- Wemico**
www.wemico.com
01562 820123
sales@wemico.co.uk
- Westwood Liquid Technologies Ltd**
www.westwood-uk.com
0800 808 5480
info@westwood-uk.com
- Wienerberger Ltd**
www.wienerberger.co.uk
01427 871200
gonzalo.bunse@wienerberger.com
- W J Horrod Ltd**
www.wjhorrod.co.uk
020 8539 8746
info@wjhorrod.co.uk
- Xtratherm Ltd**
www.xtratherm.com
03712 221033
info@xtratherm.com

MERCHANTS

- Belgrade Insulations Ltd**
www.belgradeinsulations.com
0113 252 6524
info@belgradeinsulations.com
- Chandlers Roofing Supplies**
www.chandlersroofing.co.uk
01273 815100
enquiries@chandlersbs.co.uk
- China Slate Ltd**
www.chinaslate.co.uk
01246 865222
sales@chinaslate.co.uk
- CTF Insulation Ltd**
www.ctfinsulation.co.uk
0333 207 0870
office@ctfinsulation.co.uk
- Encon Insulation**
www.encon.co.uk
01937 524 200
info@encon.co.uk
- Euro Building Supplies**
www.eurobuildingsupplies.co.uk
07813 012197
geoff@eurobuildingsupplies.co.uk
- Fixing Point Ltd**
www.fixingpoint.com
01242 265100
sales@fixingpoint.com
- Guardian Tools Ltd**
www.guardiantools.co.uk
07860 404060
a.fitzmaurice@guardiantools.co.uk

- Independent Roofing Supplies Ltd**
www.irsl.co.uk
01273 516999
enquiries@irsl.co.uk
- Industrial Roofing Products Ltd**
www.irpltd.co.uk
01454 299588
sales@irpltd.co.uk
- Lagan Building Solutions Ltd**
www.lbsproducts.com
0800 096 7612
info@LBSproducts.com
- Langley Group**
www.langley.co.uk
01327 704778
enquiries@langley.co.uk
- Linroc Ltd**
www.linroc.co.uk
01793 764000
info@linroc.co.uk
- MAK Fastener Specialists (NI) Ltd**
www.makfasteners.com
0161 866 8164
uksales@makfasteners.com
- Meir Insulation Ltd T/A Meir Roofing & Services Supplies**
www.meir-roofing.co.uk
01405 780444
sales@meir-roofing.co.uk
- Mercury Building Products Ltd**
www.mercurybuildingproducts.co.uk
01246 292816
orders@vaprfree.co.uk
- Minster Insulation & Dry Lining**
www.minsteronline.co.uk
02766 560601
lee.cowling@sgbd.co.uk
- Northern Slate Supplies Limited**
www.northernslate.co.uk
07487 870070
john@northernslate.co.uk
- Onestop Roofing Supplies Ltd**
www.onestoproofingsupplies.com
0141 445 6777
noneill@weareonestop.com
- Raven Roofing and Building Supplies Ltd**
www.ravenroofingsupplies.co.uk
0208 893 8954
info@ravenroofingsupplies.co.uk
- Rinus Roofing Supplies Ltd**
www.rinusroofingsupplies.co.uk
01254 777 777
info@rinusroofing.co.uk
- Robert Price Roofing**
www.robert-price.co.uk
01873 858585
enquiries@robert-price.co.uk
- Saucer Solutions Ltd**
www.saucersolutions.co.uk
0141 774 0065
sales@saucersolutions.com
- SIG Insulation**
www.sigdistribution.co.uk
0330 123 0100
pauldavis@sigplc.com
- SIG Roofing Head Office**
www.sigroofing.co.uk
01480 466777
info@sigroofing.co.uk
- Skyliner Roofing Centres**
www.skylineroofing.co.uk
0208 571 6128
info@skylineroofing.co.uk
- Spanish Slate Quarries UK Ltd**
www.ssqgroup.com
020 8961 7725
info@ssq.co.uk
- TaperedPlus Ltd**
www.taperedplus.co.uk
01642 677342
sales@taperedplus.co.uk
- UK Roofing & Plastic Supplies Ltd**
www.ukroofingsupplies.co.uk
01753 539820
info@ukroofingsupplies.co.uk
- Ultima Waterproofing Ltd**
www.ultimawaterproofing.co.uk
01268 944054
info@ultimawaterproofing.co.uk
- Undercover Roofing Supplies Ltd**
www.sigroofing.co.uk
01268 798999
info@sigroofing.co.uk

- Wonderbuilds Inc. Limited**
www.wonderbuilds.co.uk
0208 208 2121
admin@wonderbuilds.co.uk
- SERVICE PROVIDERS**
- AbiCAD Ltd**
www.abicad.co.uk
01489 589454
admin@abicad.co.uk
- Bettersafe International BV**
www.bettersafeinternational.com
01260 217437
info@bettersafeinternational.com
- Chameleon Financial Planning**
www.chameleonfp.co.uk
01257 676514
david.broom@chameleonfp.co.uk
- Clear MPW**
www.thecleargroup.com
01622 683913
enquiries@thecleargroup.com
- Drummond Roofing Consultancy Ltd**
www.drummondroofingconsultancy.co.uk
07515 027576
gilles@drummondroofingconsultancy.co.uk
- Height for Hire**
www.heightforhire.com
0845 609 9199
info@heightforhire.com
- Improveasy Ltd**
www.improveasy.com
0800 024 8505
info@improveasy.com
- Innovation in Life**
www.innovationinlife.co.uk/
sectors/construction
020 4511 5511
info@innovationinlife.co.uk
- L.R. Services Ltd**
www.lr-services.co.uk
020 8302 3122
info@lr-services.co.uk
- McCarron Coates Ltd**
www.mccarroncoates.com
0113 298 3489
luigi@mccarroncoates.com
- McCormack Partners Ltd**
www.mccormack-partners.com
0141 374 2492
hello@mccormack-partners.com
- Phillips Green & Murphy Solicitors**
www.pgmsolicitors.co.uk
01792 468684
enquiries@pgmsolicitors.co.uk
- Pinner Risk Solutions Ltd**
www.prs-limited.co.uk
01895 675758
general@prs-limited.co.uk
- QANW**
www.qanw.co.uk
01292 268020
info@qanw.co.uk
- Roof Test Consultancy Ltd**
www.rooftestconsultancy.co.uk
0208 470 8118
office@rooftestconsultancy.co.uk
- Roof Tests & Surveys Ltd**
www.rooftestsandsurveys.co.uk
07955 206708
info@rooftestsandsurveys.co.uk
- Surveyroof Ltd**
www.surveyroof.co.uk
0345 257 7663
sales@surveyroof.co.uk
- The Pallet LOOP**
www.thepalletloop.com
0800 024 6130
info@thepalletloop.com
- Thermal Recycling**
www.thermalrecycling.co.uk
01902 213640
info@thermalrecycling.co.uk
- Thornton Consulting Group Ltd**
www.thorntonconsulting.co.uk
01342 410508
mail@thorntonconsulting.co.uk
- WowNow Hire**
www.wownowhire.co.uk
01329 650810
info@wownowhire.co.uk

Published by

NFRC, 31 Worship Street, London EC2A 2DY
www.nfrc.co.uk | 020 7638 7663 | helpdesk@nfrc.co.uk | @TheNFRC

DISCLAIMER: The contents included in this newsletter have been submitted by NFRC Supplier Members for the benefit of NFRC Trade Members. While the content has been styled, proof-read and checked for any obvious inaccuracies, NFRC does not necessarily endorse it. We do not advocate for any particular products, service or company. Any technical opinions expressed are those of the author and not of NFRC.