

ROOFING TIMES

ISSUE
13

ENQUIRIES BOUNCE BACK BUT ENERGY COSTS WEIGH ROOFING FIRMS DOWN



A full copy of the survey is available at nfrco.co.uk/nfrc-members

The latest State of the Roofing Industry survey sheds light on opportunities and on constraints as the industry enters 2023.

The State of the Roofing Industry survey, from NFRC and Glenigan, for the final quarter of 2022 reinforced the message that pipelines of work in most sectors look positive for roofing contractors, but the cost of doing business is continuing to limit firms. The Q4 survey, responded to by NFRC Members operating all over the UK, indicates that **enquiries rose once again** for UK roofing and cladding contractors after a slight fall in Q3. **Workloads have continued to grow for contractors in five of the six sectors measured** (the exception being public non-residential new build work). Domestic and commercial repair, maintenance and improvement work were indicated to have seen particularly good workload growth.

The vast majority of roofing contractors have seen a sharp rise in their energy costs during 2022. Energy costs in the fourth quarter of 2022 were reported to be higher than a year earlier by 77 per cent of respondents. The average cost increase reported by firms was a sizeable 84 per cent. Other factors that impact firms' costs also stood out: roofing contractors continued to report that **material prices were rising, though at a moderated pace**: a balance of 64 per cent of firms reported that they paid more for materials during the final quarter of 2022, falling from a balance of 75 per cent during the previous quarter. With the added pressure of **labour costs continuing to increase** (reported by a balance of 52 per cent of contractors), the inflated 'cost of doing business' has affected tender prices: a balance of **42 per cent of firms raised their prices in Q4**. Late payment continued to be an additional

financial hurdle: over half of firms (56 per cent) reported that their contractual payment terms were 30 days or less, but only 28 per cent of firms were on average paid within that period.

Workloads have continued to grow for contractors in five out of six sectors measured.

Looking ahead to 2023, market expectations vary by sector, partially reflecting generalised economic uncertainty. Contractors who take on new residential work are less positive: a balance of 14 per cent of firms expect workload to decline over the next twelve months. Firms in the domestic and commercial RM&I markets however expect to enjoy continued full order books, with a balance of 22 per cent and 21 per cent of firms respectively anticipating that their sector workload will increase during 2023.

THANKS TO OUR SPONSORS OF THE NFRC UK ROOFING AWARDS 2023 FOR THEIR CONTINUED SUPPORT



Headline sponsor



Drinks Reception and After Party sponsor



WELCOME

I hope that you enjoy this edition of Roofing Times which provides some fantastic articles on products, services and case studies from NFRC's Supplier Members.

You'll all be aware that the 2023 UK Roofing Awards are getting closer so make sure you don't miss out on attending.

Details for ticket purchases can be found within this issue on page 11.

Thanks to all the sponsors who are supporting this fantastic event.

Enjoy reading.

Steve

Steve Laurence
National Account Manager—
Suppliers and Service Providers

SAFETY WARNING— SUBSTANDARD ROOFING BATTENS

Substandard timber battens are still circulating within the marketplace, and have the potential to cause roof failures and accidents.

A Safety Alert has been produced for NFRC Members and the wider roofing industry to highlight the issue and give guidance on what to look out for when procuring timber battens.

Scan the QR code or follow the link to view the safety alert.

<https://bit.ly/3VE0wnC>



MANTHORPE LAUNCHES ITS NEW ROOFING UNDERLAY



MANTHORPE BUILDING PRODUCTS has supplemented its roofing range with the launch of Manthorpe120 LR.

A three-layer polypropylene composite, breathable roofing underlay, it is designed to be used as part of a complete roof construction to help resist the passage of water and wind-driven snow into the interior of a building, along with reducing wind uplift forces acting on the roof covering.



The new Manthorpe120 LR is a medium-weight, waterproof underlay, suitable for use on pitched roofs. The underlay can be fitted in unsupported applications such as traditional rafter or counter batten details with drape, along with fully-supported details such as with Scottish sarking boards. Depending on this roof construction and layout, the underlay can be used regionally up to and including Zone 5*.

The product conforms to the requirements of BS 5534 and BS 5250 and is BBA-certified, making it an ideal choice for new build and refurbishment projects.

For more information on **Manthorpe120**, visit manthorpebp.co.uk, email mbp.care@manthorpebp.co.uk or call **01773 303000**. In addition, you can keep up to date with all Manthorpe's latest news on LinkedIn.

* Refer to fitting guidance for further clarification on wind zone suitability for specific details.

AN INTRODUCTION TO ONESTOP ROOFING SUPPLIES



For over 30 years, **ONESTOP ROOFING SUPPLIES** has provided the roofing sector with a comprehensive range of quality roofing materials from some of the industry's leading manufacturers.

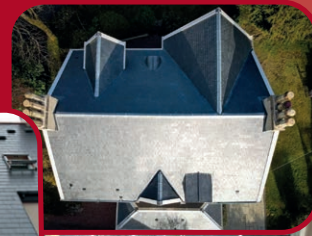
And now it has been rewarded with official NFRC Supplier Member status.

From its Scottish Roofing Centres in Glasgow and Newhouse, it offers a complete service from consultation through to delivery, supplying over 3,000 products for pitched roofing, flat roofing and sheeting and cladding projects. It is proud to supply products from well-known names such as Marley, LRS, Fatra,

Redland, Kingspan, Velux, Ejot, Filon, Index and Russell, with many more brands in stock or available to order.

It offers a full range of quality roofing supplies at competitive prices and prides itself on delivering a prompt, efficient and reliable service throughout the UK. It has a team of highly-trained sales staff manning its trade counters (*which are open six days a week*) and available on the phone, backed by an experienced team of estimators.

That combined knowledge and experience allows Onestop Roofing Supplies to offer expert advice, product information and pricing, as well as having the expertise to recommend the best solution for customers' specific needs.



For further information please visit onestoproofingsupplies.com.

“ We are delighted to become a Supplier Member of NFRC. It's another accreditation we're proud to add to our growing list to demonstrate our ongoing commitment to delivering high standards within the industry. ”

Natalie O'Neill, Operations Director at Onestop Roofing Supplies

NEDZINK QUALITY INSTALLER— DELIVERING EXCELLENCE



The principal objective of the **NedZink Qualified Installer Scheme (NQI)** is delivering excellence for zinc roofing and cladding workmanship.

Architects, their clients, main contractors and other stakeholders are reassured that installers having the NQI award are competent and capable to effectively deliver the highest levels of craftsmanship expected from the design.

NedZink was the first producer of rolled zinc with quality assurance according to NEN-EN-ISO 9001:2015 and remains a pioneer in the manufacture of quality zinc roofing and cladding products.

One of the principal benefits of NedZink NQI membership is a statement of quality that architects and clients can trust. It is a recognition of quality and is given without commercial incentives. Installers do not pay a fee for a stamp of honour; they are simply recognised for performing at the highest levels and with collaboration through communication and ongoing training.

A project with NedZink, installed by an NQI, will automatically be awarded a 50-year project guarantee.

NQIs are promoted on the NedZink Corporate Website as '**NedZink Qualified Installers**'. Projects completed by NQIs will be promoted on the NedZink/Metal Solutions websites.

NQIs will be assessed for quality and commitment, for standard in communication, and for quality of installation.

NedZink is stocked and distributed across the UK by Metal Solutions Limited. It is available in a range of contemporary finishes; to find out more please visit www.metalsolutions.uk.com

You can also read about NedZink on this website under the Features heading.

TAPEREDPLUS IS SET TO REACH RECORD FIGURES

TAPEREDPLUS, a national leader in the design and supply of flat roofing, is on target to increase turnover by 26 per cent to more than £9 million.

The independent company has enjoyed a successful 2021/22, partly due to increased demand for insulation amid spiralling energy costs.

As well as improving thermal performance there is a move to upgrade older structures with non-combustible materials in anticipation of expected legislation changes, pressure from the insurance industry, and building owners wishing to future-proof their assets.

With its headquarters in Stockton-on-Tees, TaperedPlus has increased its turnover every year, apart from the 2020 pandemic year, since its 2014 launch by Aman Chahal and Rob Vass. In 2020/21 it recorded a £7.2 million turnover.

Aman Chahal, Chief Executive Officer, said: *"We have an ambitious strategy in place to*



Chief Technical Officer Rob Vass and Aman Chahal, CEO of TaperedPlus

continue to expand the business in response to changes in legislation that will increase demand for our services.

"The Grenfell Tower disaster has provided added urgency for the industry and regulators to improve fire compliance standards going forward, which includes retrofitting legacy roofing structures.

"In response to the current energy crisis and the race to meet Net Zero targets, there is renewed interest in using insulation systems

that improve thermal performance, and reduce both heating costs and carbon emissions."

As well as supplying roofing materials, TaperedPlus, which has a technical design centre in Wolverhampton, is experienced at designing and supplying a range of insulation systems for commercial, industrial and domestic markets.

For more information visit: taperedplus.co.uk

IT'S TIME TO START A WAVE OF SUSTAINABLE CONSTRUCTION

At **DANOSA**, our mission is to offer innovative and sustainable solutions to improve the building envelope and people's quality of life. We want to drive the future of roofing and making our industry sustainable is the key.

With more than 50 years' experience across five continents, we propose different systems that ensure watertightness, thermal and acoustic insulation, correct natural lighting and fire protection, all while leading with the environment at the forefront of our mind.

Over 40 per cent of the raw materials that we use in the creation of our products comes from recycled materials. We use the equivalent of 18 million EPS fish boxes to manufacture our XPS thermal insulation. Not only do we grant a second life to these waste materials, but we also see them as valuable resources: environmentally-friendly resources that don't compromise the technical performance of the final product.

Living Roof System ▶



100-YEAR GUARANTEE FROM LEADING SLATE SPECIALIST

CHINA SLATE offers quality, natural roofing slates Emperor 681 Blue-Black and Taipan 682 Blue-Grey with a class-leading performance and a one hundred-year guarantee.

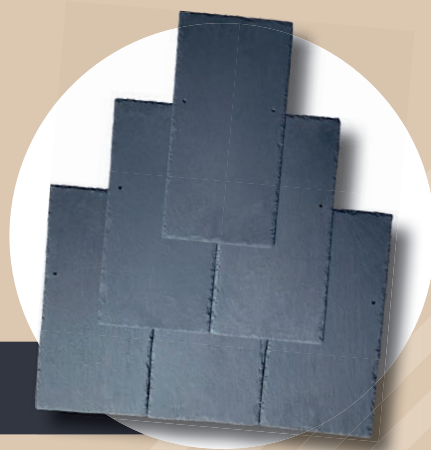
Traditionally hand-trimmed with deckled edges and countersunk holes, the inherent natural beauty of these slates will enhance the aesthetics of the finest building projects, whether they are in traditional or contemporary style.

Free from pyrite, flat and with a natural riven texture, these slates will stand the test of time and remain visually stunning for a whole lifetime. Whether the elegant deep colour and texture of the Emperor 681 Blue-Black or the uplifting grey and smoother texture of the Taipan 682, all our slates are available in a wide range of sizes and are pre-graded to 5 mm or 7 mm nominal thicknesses.

Our carefully-sourced slate is consistently tested both internally during our stringent quality management procedures and externally by the leading UK laboratory. All slates comply with BS EN 12326-1:2014 to A1, S1, W1 and T1 standards, giving you peace of mind that you are specifying a quality durable roofing slate that offers a quality alternative to Welsh slate or Spanish slate.

Stocking levels are always kept to the maximum possible from our central England location and warehouse at Felixstowe port—making the whole range of slates readily available nationwide.

Our knowledgeable and friendly team have over 30 years' experience in the slate industry and are always on hand.



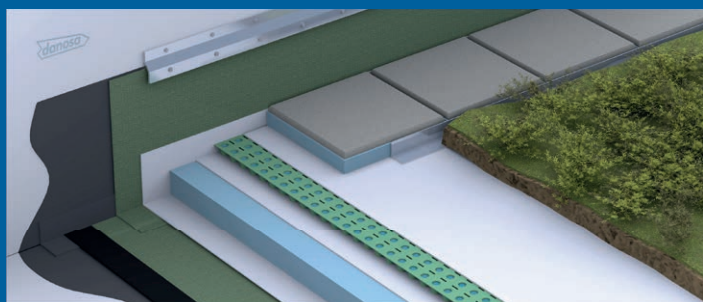
For more information please visit www.chinaslate.co.uk, email sales@chinaslate.co.uk or telephone +44 (0)1246 865222.

“ *Businesses are being called to be agents and drivers of economic and social change, to create a new, resilient and sustainable development sector. This change is essential if we want to consolidate prosperous businesses in stable environments.*

We can't do this alone though. Sustainable construction is a challenge for the entire sector, including architects, developers, manufacturers, builders, installers, investors and distributors. ”

Chief Executive Officer of Danosa, Manuel Del Rio

Danosa encourages you to choose sustainable, to choose a green future.



For further information, please visit: www.danosa.com/en-gb/

▲ Green Roof system using Esterdan Plus, Danopren TR, Danodren and Danofelt.

“ THE VENUE AND ATMOSPHERE WAS FANTASTIC. ”

It's not long to wait now!
Get your tickets to attend the
**2023 UK Roofing Awards on
Friday 12 May
at InterContinental
London—The O2**

SCAN CODE FOR
TICKETS

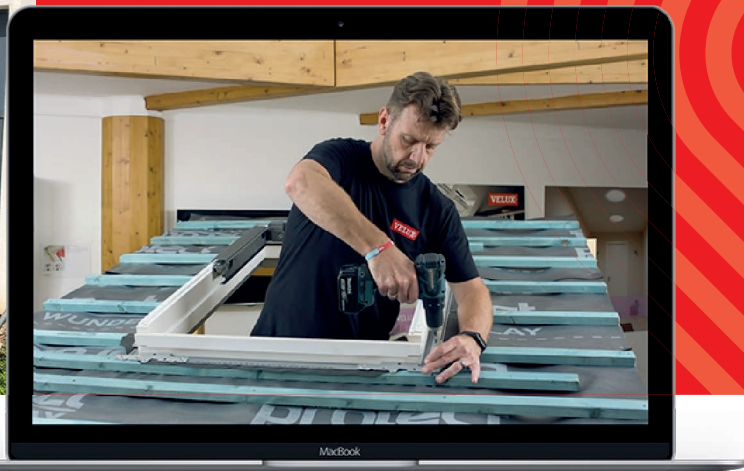


UK ROOFING
AWARDS
2023

NFRC

bit.ly/3PRSAvC

DEVELOP YOUR STAFF AND YOUR BUSINESS WITH VELUX PRODUCT AND INSTALLATION TRAINING



At **VELUX**, we recognise the importance of ongoing professional development of installers and therefore offer comprehensive training courses. We have two highly-experienced trainers ready to deliver courses to suit you and the future development of your business.

COURSES ON OFFER INCLUDE:

Best Practice installation

VELUX Flat Roof Windows

VELUX New Standard—3in1 and 2in1.

Our selection of available courses combine practice and theory and are designed to help you move your business forward. Stay updated with the newest developments of our roof windows and accessories, the best installation practices, as well as commercial insight to better sell the VELUX range and increase your profits.

Choose between physical training at the two VELUX Training Academy locations or online training via our online VELUX Training Academy—a convenient way to develop your knowledge of VELUX products and how to correctly and efficiently install them, wherever you may be.

VELUX also offers bespoke training sessions and has the option of coming to you for your added convenience, subject to conditions. Both forms of training will help you with tested techniques and tips, while learning about new VELUX products and innovations before they come to the market.

For all other VELUX training-related queries, please contact installertraining@velux.co.uk

SSQ RIDGES WILL CHANGE THE FACE OF BRITAIN'S ROOFS

The latest innovation from long-standing **SSQ** is set to change the face of natural roofs across Britain and beyond.

For decades, the only ridges available for slate roofs were ones that clashed with the material's natural aesthetics.

This was because it wasn't yet possible to make ridges out of natural slate, and so installers were forced to use differently-coloured man-made materials instead.

But now SSQ have released the Riverstone Slate Ridge system.

Managing Director Ahmed El-Helw said: *"We're extremely proud of this ground-breaking new system.*

"We've used real Riverstone phyllite slates and chemically bonded them to a GRP waterproof layer to deliver authentic aesthetics and outstanding performance.

"They're also extremely easy to fit. Supplied pre-drilled and with two stainless steel retaining screws, the ridges are permanently secured in place with the invisible RidgeFix method.

"They can be quickly cut and drilled on site, and come with ridge tiles, block ends, hip ends and ridge caps."

The ridges were developed and produced for SSQ by Mayan Roofing Systems—one of the UK's leading roofing innovation companies, known for their extensive experience in developing ground-breaking new products.

Ahmed added: *"We're delighted to have collaborated with Mayan Roofing Systems on this product, and are hugely grateful for their skill and expertise."*

If you would like to learn more about the outstanding range of natural slate and phyllite products SSQ can provide, and their long track record of providing roofs for heritage buildings around the country, please visit www.ssqgroup.com.



MARLEY CANTERBURY CLAY PLAIN TILE SPECIFIED FOR ROOFING PROJECT AT CHESTER ZOO



A tight construction deadline, listed building challenges, and the presence of a protected bat population, were some of the considerations Marley, working with NFRC Members Cooper & Williams Ltd, helped successfully overcome on a roofing refurbishment project at Chester Zoo.

Marley was engaged via the refurbishment's architectural and project management teams to provide a roofing solution that would complement the heritage of the listed building, while also meeting its pressing construction timetable.

In addition, the tile specified needed to match the existing roof aesthetics on nearby structures and be manufactured using a natural material to comply with the planning requirements of the listed building.

Providing support from the project's early stages, Marley organised a selection of tile samples for the zoo's consideration. Following this, 13,000 of Marley's distinctive Canterbury Clay Plain roof tiles were specified for the project. Traditionally handmade, Marley's Canterbury Clay Plain roof tiles deliver a unique and beautiful finish designed to further enhance the proud history of the Grade II listed stables at the zoo.

Marley's Technical Advisory Service (TAS) and roofing contractor Cooper & Williams Ltd (NFRC Trade Members) consulted closely with the client at all stages of the project to ensure the roof ventilation and bat access challenges were met. In particular, the specified ventilation solution at the eaves level not only meets the prevailing standard as set out in the building regulations, but it also aligns with the management of the protected bat population in proximity to its favoured nesting habitat.

For more information, please visit: <http://bit.ly/3HQsgcv>



ONDULINE HAS IT COVERED WITH NEW ROOFING MEMBRANE RANGE

ONDULINE has added a 'new and improved' range of waterproof, vapour-permeable membranes to its portfolio, further extending its growing presence in the industry.

BBA-certificated, the ONDUTISS AIR membranes have a high technical specification, including advanced levels of tensile strength, tear resistance and ductility, and are available in four different grades: 100 g/m², 120 g/m² and the more desirable 140 g/m² and 160 g/m² with 180 g/m² due to launch later this year.

Having BBA certification means the breathable membranes are suitable for pitched roofs on new build as well as renovation projects.

Ardit Strica, Technical Manager for Onduline, said: "The technical strengths of this suite of products give us enough confidence to say they are truly market-leading.

"Among their other advantages, their tensile strength, tear resistance and ability to stretch before breaking

compare extremely favourably when measured against similar products on the market.

"It is the technical qualities that really set this range apart."

ONDUTISS AIR carries a W1 classification resistance to water penetration and a Class E reaction to fire.

It is suitable for use on roofs with a full deck or purlins as an initial underlay for thermally-insulated, ventilated, sloping roofs, and in particular for use under concrete and sheet tiles.

As well as improving the efficiency of thermal insulation, it helps reduce energy consumption, reduces CO₂ emissions, regulates the flow of water vapour and is resistant to high and low temperatures.

The membranes are now available to purchase through selected roofing and builders merchants.

For further information please visit uk.onduline.com.



ONE OF THE UK'S LEADING DISTRIBUTORS TO THE ROOFING CONTRACTORS MARKETPLACE

EURO BUILDING SUPPLIES is proud to align itself with NFRC and its focus to promote the highest quality products.

With over 30 years of experience, Euro Building Supplies imports and distributes a full range of pitched roofing membranes. In addition to its best-selling Dry-Fix Ridge Kit, it has a plethora of essential products and accessories for customers to choose from. These include tile vents, adapters and flexi pipes, a full range of fixings, sealants, PPE, all 3 m dry valleys, lead replacement, diamond blades, and a range of general consumables.

THE ADVANTAGES OF USING EURO BUILDING SUPPLIES INCLUDE:

- Carriage paid on orders £400 and over
- Bulk deals available
- Full product brochure available.



THE COMPANY STATES:

“

What sets us apart is our ability to provide a full-service solution from start to finish.

”

We pride ourselves in quality, consistency and an unbeatable world-class service. Our team of highly-skilled and knowledgeable staff is on hand to offer expert advice and support, every step of the way. From quotation through to delivery and aftercare, we will be there for you.

To find out about the whole range please visit www.eurobuildingsupplies.co.uk or contact Geoff on 07813 012197.

WIENERBERGER UK LAUNCHES BIODIVERSITY STRATEGY

WIENERBERGER UK AND IRELAND has launched its new biodiversity strategy, 'Let's build with nature in mind', outlining the manufacturer's approach to becoming a nature-positive business.

The strategy will redefine Wienerberger's approach to land management in the UK and Ireland and places an increased emphasis on developing products and services that promote biodiversity in the built environment.

WIENERBERGER'S BIODIVERSITY STRATEGY DETAILS ACTIONS ACROSS FIVE AREAS:

- Improving our land assets
- Developing products and services
- Enhancing the wellbeing of our people and communities
- Building partnerships
- Sharing data and information.

Key announcements in the document include the introduction of a Biodiversity Enhancement Management Plan for each of Wienerberger's manufacturing sites and establishing a network of Biodiversity Ambassadors throughout the company, as well as partnering with experienced ecologists to inform product design.

Stephanie Palmer, Head of Sustainability at Wienerberger, said:

"Wienerberger UK and Ireland released this strategy ahead of COP15 to demonstrate that companies are willing to collaborate to reverse nature loss in this decade."



EVERYTHING YOU NEED FROM SKYLINE ROOFING

Skyline Roofing Centres has over 45 years' experience at the forefront of roofing innovation. With 12 branches conveniently located around the M25, we can get you what you require, when you require it.

Our staff have a wealth of experience in the roofing sector, and are committed to delivering the best products, design experience and outstanding customer service. We have a dedicated department for sheeting and cladding, with a specialist team offering a full support package for your project.

Whether you are cladding an agricultural, industrial, commercial or domestic building, we have the resources to supply everything from profiled sheets and rainscreen materials down to the last fixing. We stock materials from all major manufacturers and ensure that quality and value are of paramount importance.



OUR EXTENSIVE RANGE COVERS:

- Profiled Box and Sinusoidal Metal Sheeting
- Metal Roof Tiles
- Aluminium/Zinc Standing-Seam Systems
- Roof and Wall Insulated Composite Panel Systems
- Fibre Cement Corrugated Sheeting
- Galvanised Corrugated Iron Sheeting
- PVC, GRP and Polycarbonate Sheeting
- Freefoam Cladding Systems
- Etex Rainscreen Facades
- Cedral Weatherboard Lap and Click Cladding Range
- Wall Copings and Metal Bespoke Fabrications
- Plasiac Georgian Wired Panels
- Onduline Corrugated Bituminous Sheeting
- Flashings/Fabrications
- Metal/Insulated/Membrane Lined/Plastic Rainwater.

While standard-sized products are held in stock, many applications require bespoke manufacture.

Whatever the size of your project, our specialist team in Watford will provide you with all the advice and support you need to make it a success.

Please contact **Diane Benvenga**, Sheeting Business Development Manager at diane.benvenga@skylineroofing.co.uk or on **07944 269 848**.

"We recognise that Wienerberger's operations both rely on and impact upon nature. Our strategy outlines how we will actively promote biodiversity across our land and through the products and services we deliver."

The publication of Wienerberger's biodiversity strategy delivers on a commitment made within its sustainability strategy Let's Build Beyond, launched in 2021.



TO DOWNLOAD WIENERBERGER'S BIODIVERSITY STRATEGY please visit <https://bit.ly/uk-biodiversity>.

“

VERY POLISHED—A GOOD PLATFORM FOR THE WINNING PROJECTS AND THE TEAMS TO COLLECT THEIR AWARDS”

Get your tickets to attend the **2023 Awards** before they sell out.

SCAN CODE FOR TICKETS



bit.ly/3PRSAvC

UK ROOFING AWARDS 2023

NFRC

TOPSEAL SYSTEMS

TOPSEAL SYSTEMS are very proud to have Topseal PU specified for the roofing works on Nottingham City Hospital, one of England's largest acute teaching trusts. Seven areas covering a total of over 8,000 m² required urgent attention, with each roof throwing up its own unique challenges. Topseal Systems along with several Topseal Approved Contractors were able to complete these works efficiently and to an extremely high standard.

The Pharmacy Department, at only 500 m² was not only the smallest of the roofs on the project, but it was also the most demanding due to

the number of issues present. The scope of works included cleaning all flat roof areas and removing organic growth which had grown in cracks of the substrate, removing all pitched roofing and replacing with new, removing chimneys and dangerous brickwork, replacing rotten roof lanterns and installing new rainwater goods. The Topseal PU warm roof system was installed throughout, complete with a 20-year materials and workmanship guarantee.

Topseal technical department produced full specifications along with attending prestart meetings, intermittent inspections throughout the project and a final inspection to ensure all works were carried out to the expected high standards and to specification.

Topseal PU is a BBA-certified, high-performance, moisture-cured, single component, reinforced polyurethane, for use on new and existing flat roofs that can be installed onto various substrates including but not limited to the following: felt, concrete, asphalt, EPDM, single ply, metals and OSB3.

For more information about our systems or becoming a **Topseal Approved Installer**, contact **Topseal on 01423 886495** or email info@topseal.co.uk or visit us on www.topseal.co.uk

ADDLITE LAUNCHES NEW INSTALLER PROGRAMME



In today's fast-paced world, supporting the B2B market with ideal building product solutions can help save businesses significant time and money.

Leading UK suppliers of natural light solutions **ADDLITE** are pleased to announce the launch of their approved installer program, designed to offer roofing contractors and installers a one-stop, convenient location to source a variety of rooflight systems, all competitively priced with quick turnarounds.

Mr Rob Fletcher Director comments

"Addlite understands the value of working alongside roofing installers from a customer and contractor point of view. The end users need to have confidence in their roofing installation and the contractors need to know the products they are installing are quality, products that meet all the required performance and safety criteria. Our overall aim with this installer programme is to raise awareness of the latest building regulations, compliance, and best practices for installing roofing and daylight products and improving business efficiencies all round.

By becoming an Addlite Approved Installer you will gain access to priority technical support, live and virtual training events, access to 'how to' videos, special discounts, and incentives.

Sign up today and allow us to support you in your business growth."



2023 UK ROOFING AWARDS

“ THE 2021 AWARDS WERE A SELL OUT. ”

92.5% OF GUESTS SAID THEY WOULD ATTEND AGAIN

AND

85.0% WOULD RECOMMEND IT TO OTHERS.

It's a great opportunity for networking, with over 1,000 guests attending the sold out 2021 awards.

Make sure you don't miss out on industry's premier event, celebrating the best of UK roofing across ALL disciplines.

FRIDAY 12 MAY 2023 | **InterContinental London–The O2**
GET YOUR TICKETS NOW!



SCAN QR CODE
 OR VISIT:
bit.ly/3PRSAvC
 FOR TICKETS

UK ROOFING AWARDS 2023



FOR CONTRACTORS

The Addlite website is a convenient and easily accessible platform that allows users to view the full range of roof light solutions, designed to suit their project. The site features products from COXDOME, Brett Martin, Roofglaze and not to mention the stunning roof lantern and bi-fold door range from Korniche.

The Addlite Approved Installer programme is an exciting platform for many installers to get involved with. To find out more or to become involved follow this link <https://bit.ly/3XI0SOs> or contact us at sales@addlite.co.uk / 01922 714091.



HEADLINE SPONSOR



DRINKS RECEPTION AND AFTER PARTY SPONSOR

FEEL GOOD INSIDE



